



50 YEARS OF SERVICE

CENTRAL MISSISSIPPI PLANNING & DEVELOPMENT DISTRICT

CMPDD

Celebrating



*Years of
Regional Excellence*





Central Mississippi Planning & Development District

1968 - 2018



Table of Contents

District Staff	2
From the Chief Executive Officer	3
Board of Directors	3
Board of Directors, A Gallery of the Presidents	4
The Years in Review	6-56
Executive Order No. 81	57

District Staff

Sonya Banes • *District Accountant*
Linda C. Beatty • *Case Manager/RN*
Cyndy V. Berg • *Case Manager/RN*
Katie M. Bilbro • *Medicaid Waiver Supervisor*
Lisa Blanton • *Case Manager/SW*
Hattie T. Boone • *MAC Center Supervisor*
Kalen H. Brantley • *Planning Technician*
Mary D. Broadway • *Case Manager/RN*
Michael Scott Burge • *Senior Transportation Analyst*
Lesley A. Callender • *Senior Transportation Planner*
Jeani L. Cantrell-McGraw • *Case Manager/RN*
Chuck Carr • *Director Of Plng & Mgt Division*
Aviance B. Caston • *Case Manager/RN*
Beverly L. Catchings • *Case Manager/SW*
Artricia N. Chambliss • *Case Manager/RN*
Gwen A. Clark • *Case Manager/RN*
Janice D. Coleman • *Case Manager/SW*
Karla Craine • *Human Services Assistant*
Chelsea B. Crittle • *Aging Program Director*
John Jason Duff • *IT System Analyst*
Amy C. Flanagan • *Planning Assistant*
Jane Foster • *Executive Assistant*
Brittany Gates • *Resource Specialist III*
Karen R. Gates • *Project Manager*
Kristen Gladney • *Case Manager/RN*
Cynthia M. Goodin • *WIOA Performance Coordinator*
Angela O. Griffin • *WIOA Performance Coordinator*
Katherine C. Hardy • *Case Manager/SW*
Angela M. Harris • *Case Manager/SW*
Karen T. Harris • *Case Manager/SW*
Delicia S. Harrison • *Resource Specialist III*
Lynn Head • *District Accountant*
Erika C. Hill • *Case Manager/RN*
Fenicia L. Hill • *Case Manager/SW*
Markessa V. Hughes • *Resource Specialist III*
Angel O. Idowu • *Case Manager/SW*
Leslie C. Ivers • *Case Manager/RN*
Gussie L. Jeffery • *P/T Resource Center Asst.*
Debbie Johnson • *Receptionist*
Zachary Dylan Johnson • *Operations Technician*
Cynthia Rena Jones • *Case Manager/RN*
Daisy L. Jones • *Case Manager/SW*
Kyanta D. Jones • *Community Navigator*
Tara T. Jones-Cooper • *Program Specialist*
Kiara S. Kendrick • *Case Manager/SW*
Brenda Knott • *Program Coordinator*
Jason A. Larry • *Comm. & Econ. Development Specialist*
Clarissa S. Leflore • *Case Manager/SW*
Sharon Lipe • *Director Of Finance*
Makleisha Logan-Hite • *Counselor*

Eric Shane McIntyre • *District Accountant*
Kathy McKeithen • *Counselor*
Martha R. McPhail • *Office Manager*
Michelle T. McVey • *Case Manager/SW*
Thomas W. Meek • *Workforce System Coordinator II*
Jill S. Middleton • *Case Manager/RN*
Katherine Beth Miller • *Case Manager/RN*
Linda R. Mitchell • *Case Manager/RN*
Michael W. Monk • *Chief Executive Officer*
Darlene Morton • *Case Manager/SW*
Angela M. Neal • *Case Manager/RN*
Janice M. Neal • *Case Manager/SW*
Jessica L. Nichols • *Workforce Manager*
Paula D. Nowell • *Case Manager/RN*
Gray M. Ouzts • *Community & Economic Development Planner*
Joyce M. Paris • *WIOA Participant Data Specialist*
William Peacock, Jr. • *Principal Planner*
Roxanne M. Pendleton • *Case Manager/SW*
Dwayne E. Perkins • *Loan Specialist*
Regina R. Phillips • *Case Manager/RN*
Mary C. Powers • *Workforce Director*
Sandra L. Rankin • *ADR Specialist II*
Michelle Rutledge • *Case Manager/RN*
Trennie B. Sanders • *Case Manager/SW*
William T. Scott • *GIS Analyst*
Lindsay U. Sellers • *Economic Development Specialist*
Teresa Shoto • *Case Management Director*
Johnathan J. Simon • *GIS & IT Manager*
Anita N. Smith • *Case Manager/RN*
Caroline L. Smith • *Case Manager/SW*
Don Smith • *Graphic Designer*
Joseph Scott Speights • *Administrative Accountant*
Mitzi R. Stubbs • *Community & Economic Development Coordinator*
Dionne M. Taylor • *Case Manager/SW*
Kelly Therrell • *Case Manager/SW*
Tracy L. Thompson • *Case Manager/SW*
Tina L. Tolar • *Workforce Program Tech Specialist*
Angela L. Travis • *Case Manager/SW*
David Wade • *Principal Planner*
Jay B. Wadsworth • *Regional Data Analyst*
Tiffany A. Walker • *Case Manager/RN*
Demetria C. Washington • *Case Manager/RN*
Susan B. Welch • *Case Manager/RN*
Lasharon G. Williams • *Resource Specialist III*
Patricia Williams • *Case Manager/SW*
Tiesha G. Williams • *Case Manager/RN*
Lousonya H. Woodland • *Ombudsman/SW*
John A. Wonch • *Senior GIS Planner*
Trisha M. Worthy • *Case Manager/SW*

From the Chief Executive Officer

On behalf of the Board of Directors and staff of the Central Mississippi Planning and Development District (CMPDD), it is our distinct pleasure to present this 50 Year Report. It is important to note that this organization, after 50 years of existence, continues to operate at a high level of productivity, efficiency, and innovation. CMPDD has come a long way over 50 years in terms of budget and staff size. During CMPDD's formation in 1968, the initial budget for FY 1969 was set at \$61,000 to support just three or four staff. After a half century, CMPDD's budget has grown to \$28.3 million and employs a staff of 100 persons in a wide range of disciplines.

This growth would not have been possible without the commitment of our local governments throughout our seven (7) county region. The CMPDD region is a diverse area that contains the largest metropolitan area population in the State of Mississippi, as well as, small rural, agricultural communities. Our purpose is to improve the overall well-being of the central Mississippi region by

addressing problems and issues that go beyond any one political subdivision. We have shown the ability to lead when necessary, but also follow the desires and policies of its overall membership.

The praises that I am bestowing upon this organization are not just a credit to the loyal and qualified staff we have assembled, but to an overall system and structure that adapts to ever-changing needs. The organization has achieved and maintained an extremely delicate balance of meeting local, state, and federal objectives and priorities through mutual effort. We strive to instill in our staff an entrepreneurial spirit that inspires us to constantly look for new and innovative ways to address the common issues and concerns of this most important region.

It is a tremendous honor and privilege to be a part of this organization and the structure that have been created over the past 50 years. I am extremely optimistic that we will continue to build upon the foundation that has been laid for many years to come.



Michael Monk
Chief Executive Officer

Board of Directors

Board Officers

Mayor Les Childress, President
Mayor Isla Tullos, Vice President

Supervisor William Banks, Secretary Treasurer
Supervisor Cobie Collins, Immediate Past President

Board Members

Copiah County

Mayor Sally Garland
Supervisor Daryl McMillian Sr.
Ms. Daisy Price
Mr. Wendell Stringer

Hinds County

Mr. Jeff Good
Supervisor Darrel McQuirter
Supervisor Mike Morgan
Mayor Isla Tullos

Madison County

Supervisor David Bishop
Mayor Les Childress
Mr. Dan Hart
Mr. John McKee

Rankin County

Supervisor Jared Morrison
Supervisor Bob Morrow
Mr. Walter Redd
Mayor Butch Lee

Simpson County

Mayor Todd Booth
Alderman Patrick Brown
Ms. Wanda Cowart
Supervisor Curtis Skiffer

Warren County

Supervisor William Banks
Mr. Jerry Hall
Alderman Michael Mayfield
Mr. Charlie Tolliver

Yazoo County

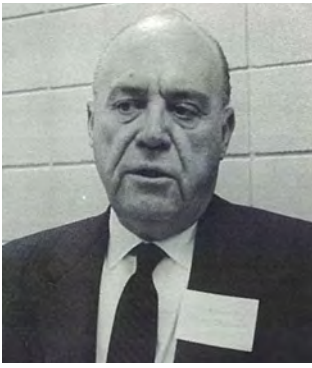
Supervisor David Berry
Supervisor Cobie Collins
Ms. Mildred Smith
Mayor Diane Delaware

City of Jackson

Mayor Chokwe Lumumba
Councilman De'Keither Stamps
Mr. LeRoy Walker Jr.
Mr. Brandon Comer

BOARD OF DIRECTORS

A Gallery of the Presidents



Minor C. Sumners
1968-1973



James Jefferson
1973-1975



R. L. Davis
1975-1977



H. M. Thompson
1977 - 1979



Ernest Buttross
1979-1981



Joe B. Everett
1981-1982



Colonel James E. Davis
1982-1983



Nielson H. Cochran
1983-1984



Charles E. Fulgham
1984-1985



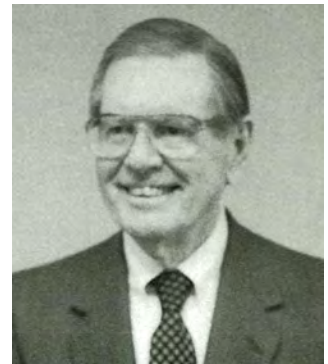
Irl Dean Rhodes
1985-1987



Hugh Jack Stubbs
1987-1989



Sidney Runnels
1989-1991



E. E. Jackson
1991-1993



James Wilson, Jr.
1993-1995



Hugh J. McGraw
1995 - 1997



Lynn Weathersby
1997 - 1999



Jerry Hall
1999 - 2001



Wendell Stringer
2001 - 2003



Leslie B. McLemore
2003 - 2005



Ken Martin
2005 - 2007



Jimmy Clyde
2007 - 2009



Knox Ross
2009 - 2011, 2011-2013



Arthur Evans
2011



James Archer
2013 - 2016



Cobie Collins
2016 - 2018



Les Childress
2018 -

The District is governed by a Board of Directors which is comprised of county and municipal elected officials, representatives of business and industry, and minority leaders.

The District as is known today was not created, but evolved over many years. While the same basic corporate governing structure continues to exist, it functions through a series of committees, sub-committees, and sometimes subsidiary corporations. Rou-

tine, normal decisions are made through this functional system where the Board of Directors has delegated much authority to subordinate groups. This structure attempts to achieve the greatest level of productivity, flexibility, accountability, and stability.

Hundreds of local leaders have contributed time and effort to steer the District's course. Among them were the past Board Presidents here pictured.

1968

The formation of the Central Mississippi Planning and Development District was a part of a national movement largely initiated from the federal level. It had become widely recognized that this country was no longer made up of cities, counties or communities; but of identifiable regions, and that there must be a regional mechanism to address the numerous problems, issues, and concerns.

This particular District was formed in 1968, around the same time the other nine were being established, largely due to the joint efforts of the Economic Development Administration (EDA), an agency of the Department of Commerce, Coordinator of Federal/State Programs David Bowen with the Office of Governor John Bell Williams, and the individual County Boards of Supervisors. With the EDA providing guidance, support and the incentive of federal funding, the Governor's Office sent representatives to each county to obtain a declaration of their intent to join with other appropriate counties to form what was then known as the Economic Development District of Central Mississippi. Resolutions were passed by each county, funds were pledged, and the initial organizational meeting was held to establish the non-profit corporate structure. In August, a charter was



David R. Bowen, Coordinator of Federal/State Programs under Governor Williams.



Governor John Bell Williams.

issued from the Secretary of State's office and CMPDD was legally created.

After its creation, each county formed a County Economic Development Committee which selected four Board Members to serve on the CMPDD Board of Directors, the legal policymaking body for the organization.

HIGHLIGHTS

- First organizational meeting to create the Economic Development District of Central Mississippi was held on June 7, 1968 in Jackson with Manning Cooper presiding.
- Steering Committee named to pursue further organization of the District: C. C. Stone, Robert Davis, L. S.

Matthews, Joe Fancher, Oscar Harvey, D.P. McGowan, S.D. Davis, John Smith, Irl Dean Rhodes, James Martin, Don Meiners, Bob Geoffroy, Minor Sumners, and Malcolm Warren.

- Charter of Incorporation issued in September by the Secretary of State's office.
- At the first official meeting of the new organization in December, these officers were selected: Minor C. Sumners - President; Dr. Jacob Reddix- Vice President; and W. E. Barksdale - Secretary/Treasurer. Technical assistance was provided by Jack White, Chris Brady, and Bob Haupt from EDA in Washington, and Jack Warren and Claude Pittman from the State.

President - Lyndon B. Johnson
 Vice President - Hubert Humphrey
 Governor - John Bell Williams
 Lt. Governor - Charles L. Sullivan

President Johnson called for bombing cessation.

The First Bone Marrow transplant was performed.

Thad Cochran was named Executive Director of Richard Nixon's campaign.

The price of a new house was \$14,950.



First headquarters located on Sunset Drive adjacent to Hinds Junior College, Jackson Branch.

1969



Executive Director Fred Corley addresses an early Board of Directors meeting.

During the first year of operations, the primary goal was to create an Overall Economic Development Program (OEDP) process and document. This process began with each county committee attempting to identify goals, objectives, opportunities, and barriers, as well as a comprehensive inventory of the resources of the area. The individual work of the county committees was being combined at the regional level to create for the first time in history a comprehensive regional overview of the area. The end-product was a formally adopted document accepted by EDA as a funding tool to help direct the eco-

nomical growth and progress of this region. Never before had functions and activities such as education, industrial development, transportation, water and sewer facilities, land-use controls, health care, and general demographics been reviewed and analyzed as one common body of information.

Once approved, this document served to identify those types of barriers which, if eliminated, would bring about greater economic growth to the region. EDA, as well as other appropriate federal and state funded agencies, was called upon to help direct their resources and grant programs to support the priorities identified in this OEDP. Federal guidelines as well as Memorandums of Agreements between federal agencies recognized the OEDP and its process as a single, common policymaking tool for the region.

During this time, the District began to assemble a staff beginning with Executive Director Fred Corley, a retired Highway Department District Engineer.

HIGHLIGHTS

- Obtained a planning grant from the Economic Development Administration to continue organizational and administrative activities.



Fred Corley, CMPDD's first Executive Director.

- Began creation of Overall Economic Development Program (OEDP) process and document.
- The first Executive Director, Fred G. Corley, was hired.
- Began operation with the first annual budget of \$61,000.

President - Richard M. Nixon
Vice President - Spiro T. Agnew
Governor - John Bell Williams
Lt. Governor - Charles L. Sullivan

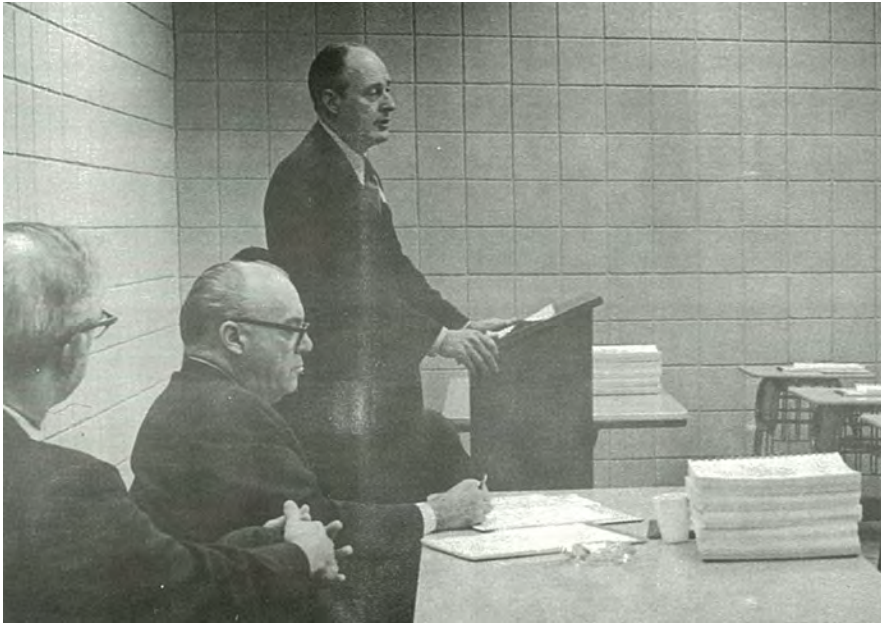
Neil Armstrong became the first man on the moon.

The first message was sent between two (2) computers.

Hurricane Camille hit the Mississippi Gulf Coast causing \$1 billion in damages.

The average annual income was \$5893.76.

1970



Robert Mayo, President of Hinds Junior College and an active participant in the early development of CMPDD, addresses the Board meeting where the first OEDP was presented.

During 1970, most of the actual preparation of the Overall Economic Development Program document was completed. The previous year had been largely one of organization and the creation of a structure upon which to build in 1970. The Overall Economic Development Program document was an extremely detailed and comprehensive report which required extensive research and public participation from all segments of the economic community. Toward the end of 1970, EDA approved this document and the accompanying process, and CMPDD was given the designation of an Economic Development District. This enabled the organization to continue to receive planning monies to address the common areas and concerns of the region, and allowed the local governments and other qualified entities to be eligible to receive EDA funding consistent with the Overall Economic Development Program.

Also, T. Larry Anderson began working for the District after having been employed in a management capacity for Standard Oil Company.

HIGHLIGHTS

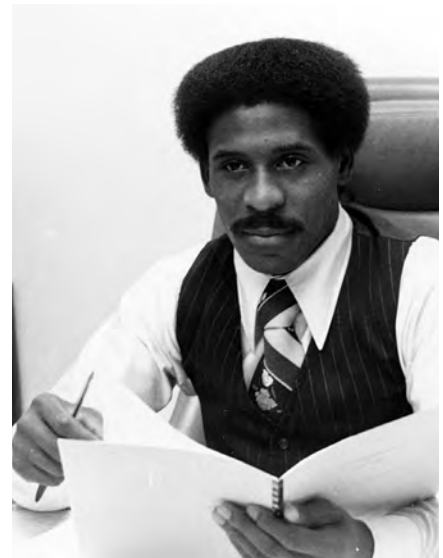
- Began an application process to be eligible to receive HUD designations in the area.
- A project for the City of Jackson to expand water, sewer, and storm drainage facilities was identified as the first priority for EDA funding.
- The first Overall Economic Development Program for the District was approved by EDA, making the area eligible for future funding.

President - Richard M. Nixon
 Vice President - Spiro T. Agnew
 Governor - John Bell Williams
 Lt. Governor - Charles L. Sullivan

The Dow Jones dropped to 631.
 Mississippi Public Television was started.

The Boeing 747 made its first commercial flight.

A gallon of gas cost \$0.36.



T. Larry Anderson was hired in 1971. He was the Director of the Human Services Division of CMPDD.



Board members and staff tour the job training facilities at Hinds Junior College.

1971



Jackson Mayor Russell Davis presents the District's first EDA project application to Bob Ainsworth, State Economic Development Administration Representative. Pictured (left to right): City Planning Director, Don Irvin; Consulting Engineer Carl Ray Furr; Ainsworth; Davis; City Commissioner Ed Cates; Public Works Director O.B. Curtis; and Cornelius Turner.

The District was now in a position to begin implementing the findings, recommendations, and priorities as outlined in the Overall Economic Development Program. It had received an additional planning grant from EDA to continue its efforts. The first physical facility EDA project in the region was water and sewer enhancements within the City of Jackson to allow the medical center complexes to expand. This project not only created an immediate infusion of funds and jobs into the region, but provided the physical support necessary for one of the region's largest economic activities to grow and expand.

The Department of Housing and Urban Development (HUD) also had a

tremendous affect on the development of regional organizations. It recognized that it could no longer continue to try to fund various projects and programs by individual political jurisdiction; and placed very detailed requirements which had to be met for a locality to be considered for funding on projects for water and sewer facilities, recreational facilities, transportation, housing, etc. If an area was to continue to be eligible to receive the various types of HUD Project funding similar to that of EDA, there was a complex and prescribed process and document which had to be completed before HUD's designation of an areawide planning entity could be obtained. During the latter part of 1971, the various requirements of HUD were met through a series of planning elements such as the housing element, and the area received its official designation. During the early part of 1971, F. Clarke Holmes was hired as the person responsible for directing planning activities.

Also of major significance during 1971, Governor John Bell Williams issued Executive Order No. 81, designating the 10 districts as the official substate planning organizations for Mississippi. This designation carried very significant responsibilities and authorities which still exist today.



In early 1971, F. Clarke Holmes was hired as the District's Planning Director.

President - Richard M. Nixon
 Vice President - Spiro T. Agnew
 Governor - John Bell Williams
 Lt. Governor - Charles L. Sullivan

The voting age was lowered to 18.
 The Mississippi Delta had a tornado outbreak that killed 58 people.
 The first pocket calculator was invented.
 The average price of a new house was \$23,450.

HIGHLIGHTS

- First EDA capital grant to the region - Jackson water and sewer grant.
- The State declared its intent to designate this District for comprehensive health planning, manpower planning, and law enforcement assistance.
- Executive Order No. 81 issued designating the 10 Planning and Development Districts as official regions for Mississippi.

1972



CMPDD's second headquarters was in this building on Lemon Street in downtown Jackson.

The District continued to mature and increase its area of influence. The Economic Development Administration (EDA) application which had previously been initiated was completed and finally submitted for funding and approval. Housing and Urban Development (HUD) continued to play a significant role in the region and required that an overall program design be prepared to parallel that of the EDA funding document.

In late 1972, President Nixon signed into law what was commonly known for many years as Revenue Sharing. This became one of the more significant federal,

state, and local partnerships to let each level of government attempt to do what it does best.

Also during this year, the District began a planning process to identify the common goals, concerns, problems, and opportunities for the evergrowing elderly population. After the approval of an extensive planning and research program, the Mississippi Council on Aging designated the District as the Central Mississippi Area Agency on Aging - a designation that continues to provide the elderly with millions of dollars of annual funding. The aging designation, again, was almost an identical process to that from EDA and HUD.



Bill Stacey served as the District's second Executive Director until leaving to work for then Congressman David Bowen.

HIGHLIGHTS

- The name was officially changed to Central Mississippi Planning and Development District.
- The District was designated as the Central Mississippi Area Agency of Aging
- Central Mississippi Planning and Development District's first involvement with the newly created process of Revenue Sharing
- The District prepared its first Overall Program Design for HUD.

President - Richard M. Nixon
 Vice President - Spiro T. Agnew
 Governor - William Waller
 Lt. Governor - William F. Winter

The Watergate Scandal began.
 Work began on the Tennessee Tombigbee Waterway.
 Digital watches were introduced.
 The average annual income was \$11,800.



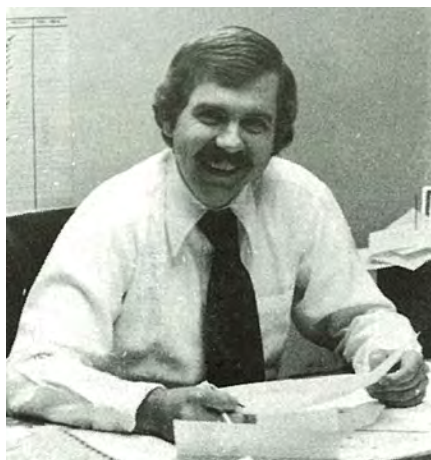
William Waller became Governor in 1972.



The EDA Application which had previously been initiated was completed and finally submitted for funding approval

1973

Regionalism was becoming more and more significant. The Office of Management and Budget, A-95, had mandated that no federal assistance would be provided without a declaration that projects and programs were in conformance to statewide and area-wide plans and policies. This was designed to prevent duplication, overlaps, and waste. As a result of Executive Order 81, the 10 districts were designated as regional clearinghouses for



Jimmy Ware replaced Clarke Holmes as Planning Director.

this review process and associated funding. By April of 1973, the District had reviewed and cleared over \$60,000,000 of federally funded projects. It was now very obvious that the Planning and Development Districts across this state and nation were becoming an institution and would address many critical issues and concerns for years to come.

During this year, F. Clarke Holmes became Executive Director and the District continued to mature and expand. Based upon an approved plan for the elderly, aging projects and development funds began to flow more freely, and activities such as the first nutrition site program were initiated.

HUD continued to play a significant role in the development of the region, and additional planning requirements were mandated as a prerequisite for

funding. During this time, the first area-wide land use plan was developed and approved, and there were numerous local activities such as mapping in Warren County, planning for Wesson, and a recreation project at McNair Springs in Simpson County. A project which was later funded was submitted for industrial park improvements at the Yazoo County Port, and Jackson received a technical assistance grant to help determine the ideal location for future industrial park sites.

The District recognized a need to keep member governments informed of opportunities, issues, and common concerns. Therefore, publication of a District newsletter, "The Quarterly Review," was initiated in the summer of 1973.

President - Richard M. Nixon
 Vice President - Spiro T. Agnew
 Governor - William Waller
 Lt. Governor - William F. Winter

Spiro Agnew resigned and Gerald Ford became the Vice President.
 The Mississippi Valley Flood of 1973 did over \$170 million in damages to the Mississippi Delta.
 The CAT scan was invented.
 A gallon of gas cost \$0.40.



F. Clarke Holmes was named Executive Director.

HIGHLIGHTS

- James Jefferson from Vicksburg was elected President, R. L. Davis from Copiah County - Vice President, and Bill Barksdale continued to be Secretary/Treasurer.
- EDA project application submitted for Yazoo County to provide an improved water system within the Yazoo County Port Commission Industrial Park.
- First District Land Use Plan
- The District published its first newsletter, "The Quarterly Review."
- First Nutrition Program



The District's first Nutrition Sites opened in 1973.

1974

This year marked the beginning of the District becoming a fully diverse comprehensive organization. While economic development would always remain its point of origin and principal mission, this function was beginning to be viewed in an extremely broad context. The HUD 701 Program provided funding for both regional and local planning activities, and the District provided planning and technical assistance to virtually every community during this time period.

Of equal significance was the official beginning of governmental management as a viable function of CMPDD. The District received funding through the Intergovernmental Personnel Administration to provide a circuit-rider program to aid local governments in establishing Public Personnel Systems. A similar activity was begun with the Governor's



In 1974, the District moved its offices to River Ridge Road.

Highway Safety Program. Emphasis was being shifted from just providing planning for the future to aiding with the day-to-day problem solving necessary at the local level. In addition to prototypes being developed, actual hands-on, day-to-day technical assistance was being provided to local governments in an extremely cost effective manner.

Recreation was of major interest. The District developed the first Regional Recreation Plan and began a funding relationship for project development with the Department of Interior which is still extremely viable. During this time and several years to follow, through the use of this regional plan, projects were identified, designed, and constructed at a record pace.

CMPDD also published its first Annual Report to accompany its newsletter begun the year before.



Betty Burgess began with CMPDD as a Research Assistant and became the Director of the Central Mississippi Area Agency on Aging.

HIGHLIGHTS

- Application submitted to expand Hinds Junior College golf course.
- Provided technical assistance to church groups in the Jackson Area sponsoring the "Meals-on-Wheels" Program.
- Assisted governments in the design of outdoor facilities and securing of federal funds from the Bureau of Outdoor Recreation: Pearl, park site - \$150,000; Magee, McNair Springs Park - \$160,000; Mendenhall, park site - \$100,000; Canton, four tennis courts - \$75,000; and Yazoo City, parking lot designs.
- Designated Metropolitan Planning Organization.

President - Richard Nixon
Vice President - Gerald Ford
Governor - William Waller
Lt. Governor - William Winter

President Nixon resigned.

Mississippi Power and Light was granted permission to build two (2) nuclear reactors.

The first bar code scanner was used in a grocery store.

The average annual income was \$13,900.



The District's first elderly transportation program was initiated.

1975

President - Gerald Ford
 Vice President - Nelson Rockefeller
 Governor - William Waller
 Lt. Governor - William F. Winter

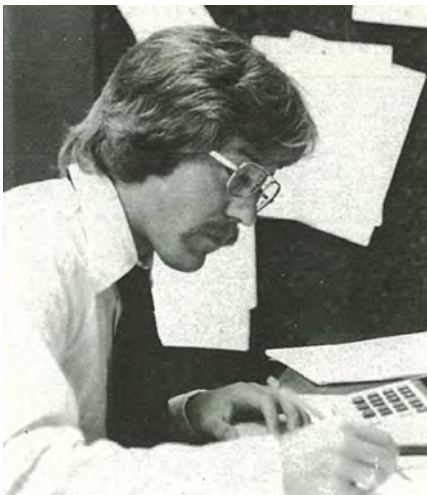
The Vietnam War ended.

The Mississippi Sandhill Crane National Refuge was established in Jackson County.

Motorola obtained a patent for the first portable mobile phone.

The price of a new house was \$39,300.

This was one of the more pivotal years in the history of the District. After more than 18 months of negotiation, a three-county Metropolitan Council of Governments was officially merged into the Planning and Development District. The role of CMPDD took on a whole new dimension and several designations which are present today were bestowed upon this organization. This consolidation made CMPDD the undisputed regional planning and economic development agency for its 7 county area. It also set a precedent that all future regional programs and activities should be channeled through this one organiza-



Bruce Reynolds, hired as a Planner in 1975, became Director of the Planning & Management Division.



CMPDD assisted the City of Pearl in obtaining a grant from the Governor's Highway Safety Program to conduct a traffic safety study.. Pictured (l to r) are Jimmy L. Ware, CMPDD; Harris Harvey, Mayor of Pearl; and Allen Torrence, Governor's Highway Safety Program.

tional structure to achieve the most cost effective utilization of severely limited resources.

In assuming these additional responsibilities, it was found necessary to create a functional committee system to deal with such specialized areas as the elderly, the metropolitan area, and the day-to-day administrative affairs of the District.



Former Planning Director Larry Smith came to the District from the Council of Governments.

HIGHLIGHTS

- Central Mississippi Planning and Development District and Hinds/Madison/Rankin/Capital City Council of Governments merge functions.
- The District was officially recognized as the agency responsible for directing the transportation planning process for the Jackson urbanized area.
- Economic Development Administration approves Industrial development project pre-applications for the City of Jackson - \$3.2 million, and Warren County - \$4.4 million.
- Nutrition Program for the Elderly expanded to Madison County.



CMPDD became the agency responsible for the Jackson Urbanized Area Transportation Process.

1976

President - Gerald Ford
 Vice President - Nelson Rockefeller
 Governor - Cliff Finch
 Lt. Governor - Evelyn Gandy

The first United States Nuclear test was performed at a Nevada test site.

A special session of the Legislature was called to restructure Mississippi's Savings and Loans Associations.

The Apple Computer Company was founded.

The average annual income was \$16,000.

This year saw many of the prior years' efforts begin to fully materialize. Based upon the findings of the Overall Economic Development Program (OEDP), over \$7,000,000 of industrial park funds were granted to Warren County and the City of Jackson. Congress enacted a local public works program, administered by ED A, which provided local governments with millions of dollars for public works improvements. Regional housing and transportation plans were begun, and senior citizens' programs expanded at a rapid pace. The Planning and Development Districts in Mississippi received formal attention with the first Governor's Planning and Development District Conference where national leaders convened to discuss regional trends.

HIGHLIGHTS

- Major industrial project - \$7 million for Warren County and Jackson.
- Established a field office in Canton after the March tornado; assisted in record-keeping and documentation to insure reimbursement to Canton from the Federal Disaster Administration.
- Assisted State Commissioner of Agriculture in preparing application to



Clarke Holmes addresses the first Governor's Planning and Development District Conference. Leaders from around the country convened to discuss the future role of the Planning and Development Districts.



The District obtained EDA funds used in the construction of a new water treatment facility in Vicksburg.



CMPDD assisted the City of Canton in obtaining Federal disaster funds after a devastating tornado.

Economic Development Administration for \$37,500 to conduct a feasibility study on establishing a Mississippi Museum of Agriculture - project cost \$50,000.

- Assisted Hinds and Rankin County Manpower Planning Council to monitor and evaluate training programs funded under the Comprehensive Employment and Training Act (CETA).



Jerry Clower entertained a gathering of over 2000 at the Bicentennial Day for Senior Citizens at the Trade Mart Building.

1977

The District was reaching a new level of maturity. The Major Streets and Highways Plan for the Year 2000 for the metropolitan area was nearing adoption.

The Farmers Home Administration (FHA) had re-organized its district regional offices to coincide with the boundaries of the Planning and Development Districts.

The District had been actively involved in the National Flood Insurance Program since its inception, but during this year provided intensive regional leadership aimed at insuring full participation in the program.

Recreation development was at an all-time high, and Central Mississippi Planning and Development District had two full-time landscape architects aiding with the funding, design, and construction of facilities.

HIGHLIGHTS

- District governments received local public works application funding totaling \$5,168,917 as follows: Bolton - \$363,655; Madison - \$335,342; Pearl - \$346,200; Yazoo City - \$249,720; Copiah County - \$281,000; Crystal Springs - \$274,000; Hazlehurst - \$148,000; Madison County - \$584,377; Canton - \$225,808; Canton School District - \$360,0192; Flora - \$29,623; Warren County - \$1,364,000; Warren County Schools - \$50,000; Vicksburg - \$120,000; Vicksburg Schools - \$30,000; Yazoo County - \$263,000; Yazoo City - \$72,000; Yazoo City Schools - \$72,000.
- CMPDD funded a total of 14 nutrition sites, serving an average of 1,000 meals per week.
- Designated Regional Solid Waste Planning Agency.
- First Energy Conservation grant with Federal Energy Administration.



Governor Cliff Finch (left) and District Board Member Robert Davis (right) visit a Copiah County bridge project site.



The District began its involvement with the Comprehensive Employment and Training Act (CETA) program.

President - Jimmy Carter
 Vice President - Walter Mondale
 Governor - Cliff Finch
 Lt. Governor - Evelyn Gandy

The New York City Blackout took place and lasted 25 hours.
 Mississippi born Elvis Presley died.
 The first MRI scan was tested.
 A gallon of gas cost \$0.60.



The District was one of the sponsors of the first Senior Citizens Appreciation Day, held at Mayes Lake.

1978



CMPDD's Tenth Anniversary is celebrated by the Board of Directors.

President - Jimmy Carter
 Vice President - Walter Mondale
 Governor - Cliff Finch
 Lt. Governor - Evelyn Gandy

First women astronauts were trained.

Sixteenth Section Lands and Lieu Lands Act transferred control of Sixteenth Section Lands from county boards of supervisors to local boards of education and required fair-market rental value on those lands

The first cell phone was introduced.

The price of a new house was \$54,800.

The District had become much more involved in national affairs, and staff were given several opportunities during the year to testify before various Congressional Committees. The District's Executive Director, Clarke Holmes, was also serving on many national boards and committees of public interest groups helping to shape and direct national priorities.

The District was ending its first ten years of service and had seen its budget grow from \$60,000 to over \$2,000,000 during its ten years of operation. Many Housing and Urban Development (HUD) programs were consolidated into the Community Development Block Grant (CDBG), attempting to provide more control and autonomy at

the local level. HUD regional planning requirements were heightened, and a re-certification process was mandated and completed for this region.

HIGHLIGHTS

- The District's first Senior Center Program was begun.
- The Vicksburg Gas System Renovation application for \$625,000 was approved by the EDA.
- Industrial development applications for Canton to build an access road and for Jackson to install sewer lines. Yazoo City received approval on a \$38,000 technical assistance application.
- A-95 Project Notification and Review System - CMPDD reviewed 212 project applications requesting a total of \$97,069,574 in Federal financial assistance.



CMPDD and the Mississippi Council on Aging assisted Magee in obtaining funds to renovate its Community Center to create a multi-purpose Senior Center.



Larry Smith, District Transportation Planner, reviews the official zoning map for Clinton with Mayor Charles Blass and City Clerk Joe Price.

1979



An aerial view of Jackson's fairgrounds during the Flood of 1979.

The two most significant events of this year were by far the 1979 Easter Flood which devastated thousands of persons within this District and a national scarcity of energy resources reaching near crisis proportions. Without neglecting any of its routine responsibilities, the District demonstrated an ability to respond rapidly with effectiveness and competency during crisis situations.

Emergency plans previously developed were implemented, and various field office structures were established to provide the optimum-level of relief and reduce the ultimate effects of the Pearl River flooding. Prior experience with documentation for federal and state aid was found to be equally as important as previous disaster preparedness.

Regional energy conservation plans were implemented. Mass transportation, express buses, even/odd gas days, carpooling, and park-and-ride systems became a reality.

HIGHLIGHTS

- Technical assistance was provided for HUD Section 407 preapplications for the City of Canton and Warren County as a result of damages caused by extensive Easter flooding.
- Applications for \$140,000 submitted to the MS Bureau of Outdoor Recreation for Mendenhall City Park, and a \$45,000 application for the development of Bell Quarter Park in Hazlehurst.
- Received approval for EDA applications as follows: City of Canton - \$100,000 to build an industrial park access road; Copiah County - \$350,000 for construction of water and sewer lines; Town of Pelahatchie - \$200,000 for construction of water and sewer mains.
- District staff immediately mobilized and began providing disaster assistance to those member governments inundated by the Easter Flood.
- The District played a significant role in the obligation of more than \$10,694,043 in CETA funds. These



The Energy Crisis led to such innovations as a Park-and-Ride System.



CMPDD was one of the sponsors of the first Health Fair for Older Adults.

- funds were obligated to 135 contractors in Hinds and Rankin Counties.
- District received \$66,323 in federal grant money for senior centers.
- Began ridesharing and emergency contingency plan.

President - Jimmy Carter
 Vice President - Walter Mondale
 Governor - Cliff Finch
 Lt. Governor - Evelyn Gandy

The Soviet Union and the United States signed the SALT II Treaty.

Devastating flood inundated the city of Jackson and many towns south along the Pearl River.

Entertainment and Sports Programming Network (ESPN) was launched on cable television.

Sony introduced the first Walkman.

The average annual income was \$17,500.

1980

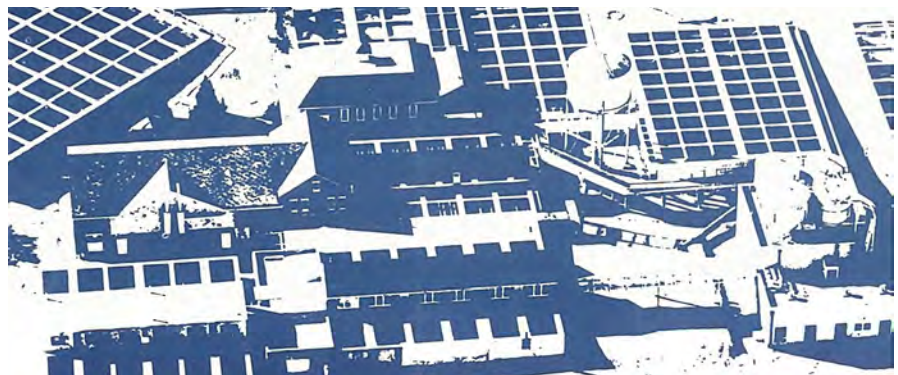


Paving the way for construction of the Levi Strauss Distribution Center in Canton was a \$1.4 million Urban Development Action Grant application prepared by Central Mississippi Planning and Development District.

The year 1980 also represented many significant events. After several years of research and testing, the Year 2000 Transportation Plan was formally adopted for the Jackson Metropolitan Area. This plan would serve as a guide for the expenditure of millions of dollars of federal funds until it will be completely updated in the mid 1990's.

The first Urban Development Action Grant in the State of Mississippi was funded attracting the Levi-Strauss Company to locate a \$23.3 million garment distribution center in south Madison County. In addition, 5 applications for similar types of public works improvements were approved by EDA for over \$6 million.

CMPDD began its first formal efforts to provide economic development financing during this year with the submission to EDA of an application for a



In 1980, CMPDD prepared 5 major grant applications which were funded by EDA, including a \$1,320,000 matching grant for improvements at Jackson's water treatment plant.

Revolving Loan Program. This would represent a highly significant direct infusion of dollars into the business community which would continue to grow in significance for many years to come.

- CMPDD assisted in preparing the "Transition Plan for the Provision of Accessible Transportation for Handicapped Persons."

HIGHLIGHTS

- Obtained Urban Development Action Grants for Canton and Yazoo City. The Canton project provided funds for development of an industrial park near Gluckstadt. More than \$1 million was allocated by HUD for the park site development. As a result, the Levi Strauss Company constructed a 14-acre distribution center.
- Home Delivered Meals Program for the District's elderly received federal funding.



Dick Molpus, then Coordinator of Federal, State and Local Programs, displays the new organizational chart depicting Federal and State Programs during the District's June, 1980 Board meeting.

President - Jimmy Carter
Vice President - Walter Mondale
Governor - William Winter
Lt. Governor - Brad Dye

United States led boycott of the Moscow Olympics in protest at Soviet invasion of Afghanistan.

Mississippi's Lemore Prather became the first woman appointed to the State Supreme Court.

Cable News Network (CNN) was launched.

A gallon of gas cost \$1.19.

1981



Governor William Winter speaks to the June, 1981 Board of Directors Meeting.



District City Clerks display their cities' annual reports prepared by CMPDD. Pictured, from left, are Joe Price of Clinton, Erma Deen Lewis of Crystal Springs, Zenith Lewis of Richland, Shirley Rogers of Pelahatchie, Marcella Cannon of Ridgeland and Doris Breihan of Florence. At right is Ralph Liverman, CMPDD's City Management Specialist.

Shortly after the beginning of 1981, massive changes in federal aid to state and local governments took place. There was a massive effort from the national level to reduce federal spending and shift many of these responsibilities to other levels of government. Much of this was unexpected and CMPDD had to re-organize to consolidate functions and reduce any nonessential spending. In addition to more frugal management, a major effort was initiated to identify new and different sources of revenue.

Implementation of the newly adopted Regional Transportation Plan continued to be a major priority. Emphasis was placed on energy-related activities such as ride sharing, van pools, and traffic

engineering. The District began a circuit-rider traffic engineering program similar to other management activities, and hired a certified traffic engineer to work with individual communities for over 3 years in helping to determine cost effective ways of moving people and goods without having to provide additional capital facilities.

HIGHLIGHTS

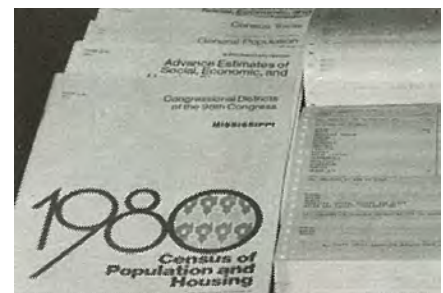
- Senior Discount Program started.
- PDD funding authorized by State Legislature.
- Brandon, Pelahatchie, and Yazoo City received a total of \$1,288,000 to construct water and sewer lines for low

President - Ronald Reagan
 Vice President - George Bush
 Governor - William Winter
 Lt. Governor - Brad Dye

The AIDS Virus was identified.
 Trent Lott became House Minority Whip (second-ranking Republican in the House of Representatives).
 IBM launched its first PC which uses Microsoft Software.
 The average new house was \$78,200.



The District initiated the Senior Discount Program in 1981.



CMPDD was designated Census Data Affiliate.

income neighborhoods, and Yazoo County received \$236,000 for reconstruction of a bridge which had been destroyed by floods.

- Designated by the Department of Commerce to receive all 1980 Census information.
- 12,786 calls were served through the Outreach Program which strives to put people in need of services in contact with the sources available.

1982



A Community Development Block Grant (CDBG) Special Opportunities Grant of \$460,000 provided for the expansion of Inland Steel Container Company in the Canton Industrial Park.

The District created the Central Mississippi Development Company, Inc. which became certified by the Small Business Administration (SBA) as a certified development company. This organization, acting as a fully owned subsidiary of CMPDD, would actually make direct small business loans to business endeavors seeking to begin or expand. These loans, while directly made by the local organization, would have the backing of the federal government in the event of default therefore insuring both long-term as well as attractive rates.

Also during 1982, the Central Mississippi Regional Entitlement was created and existed for almost 4 years for the purpose of prioritizing and allocating Community Development Block Grant funds based upon a regional planning system. This provided this region of the state with its own set-aside of funds and allowed communities to compete only against one another.

HIGHLIGHTS

- Developed a Transit System and Transportation Energy Contingency Plan for Jackson.
- Created Community Development Block Grant (CDBG) Regional Entitlement.
- CMPDD assisted MP&L in the development of Project Energy Concern.



(Left to Right) Mike Shelton, acting SBA District Director, and Miller Widemire, SBA Regional Director, present a Development Corporation Certificate to Ernest Buttross, CMDC President, Clarke Holmes, Executive Director, and James Davis, Secretary/Treasurer.



District Traffic Engineer Eric Deiorlein works on a study presented to the Medical Center to alleviate traffic problems there.

- Established the Rankin County Senior Center which was frequented by 2,843 elderly people. Started the Fanin Community Center – utilized by 2,865 senior persons.

President - Ronald Reagan
Vice President - George Bush
Governor - William Winter
Lt. Governor - Brad Dye

The Recession began to hit.

Jackson Mississippi hosted the International Ballet for the first year.

The first artificial heart was implanted.

The average income was \$21,050.

1983



U.S. Commissioner of Aging Lennie Tolliver visits Jackson for a briefing on the Administration's proposed 1984 Budget for Older Americans Act Programs, Shown above are: (left to right) Frank Nicholson, Regional Director for the Administration on Aging; Jay Moon, MS Council on Aging; Ms. Tolliver; and Betty Burgess, CMPDD Area Agency on Aging Director.

The Comprehensive Education and Training Program (CETA) was eliminated and replaced with the Job Training Partnership Act (JTPA). The District created a Local Planning Council and became the regional agency for the state for planning, oversight, and implementation of this program.

CMPDD completed an extensive regional computer study to determine the feasibility of providing regional data processing assistance to its local governments. The results of this analysis were a complete introduction into the world of computers for the Central Mississippi Planning and Development District which would greatly reshape and enhance the way it did business for years to come.

The City of Flora received the first

Urgent Needs Grant in the state under the Community Development Block Grant Program. This Urgent Needs Grant allowed the town to construct a new water well to replace the one which had recently become inoperable.

HIGHLIGHTS

- Prepared applications for EDA Emergency Jobs Bill Act for Hazlehurst, Madison County, Yazoo City, and Yazoo County.
- Prepared and received funding approval for the first Special Opportunities grant in the State of Mississippi which allowed the City of Canton to make a loan to Inland Steel Corporation in their expansion efforts.

President - Ronald Reagan
 Vice President - George Bush
 Governor - William Winter
 Lt. Governor - Brad Dye

Unemployment reached 12 million.

Long Distance Discount Service (LDDS) was started in Mississippi. It later became World Com.

A gallon of gas cost \$1.11.



State Auditor-Elect Ray Mabus addresses the December Board of Directors Meeting.

- The City of Ridgeland was the first city in Mississippi ever to receive funding approval under the Secretary's Discretionary Fund, U. S. Department of HUD, to allow the construction of water and sewer lines necessary for the development of Holmes Jr. College High-Tech branch.



Diligent efforts by CMPDD and Ridgeland officials resulted in Ridgeland being the first Mississippi City ever to receive funding approval under the Secretary's Discretionary Fund, Department of HUD, for water and sewer lines for the High Technology Branch of Holmes Community College.

1984



Canton received approval of a \$333,000 CDBG for a fire station and water system improvements.

Committees were being used extensively with over 7 functional committees working on a daily basis. Probably most important during this year was the acquisition of a full scale computer system for the District's internal use. This system was installed to not only improve the long term planning and analysis capability of the organization, but also to provide day-to-day administrative assistance by internal accounting and fiscal management. Included with this effort was the loading of the 1980 Census on to the District central computer which was paving the way for the extensive

computer-based Geographic Information System which is now available and being enhanced on a daily basis.

HIGHLIGHTS

- Obtained first full scale computer system.
- Received grant from the Mississippi Department of Energy and Transportation to administer a Section 18 Rural Public Transportation Program.
- Prepared a Sub-Area Transportation Study for southern Madison County as part of the Jackson Urbanized Area Transportation Planning Process.



CMPDD acquired a full-scale computer system.

- Over \$1.4 million awarded to recipients through the Regional Entitlement concept.

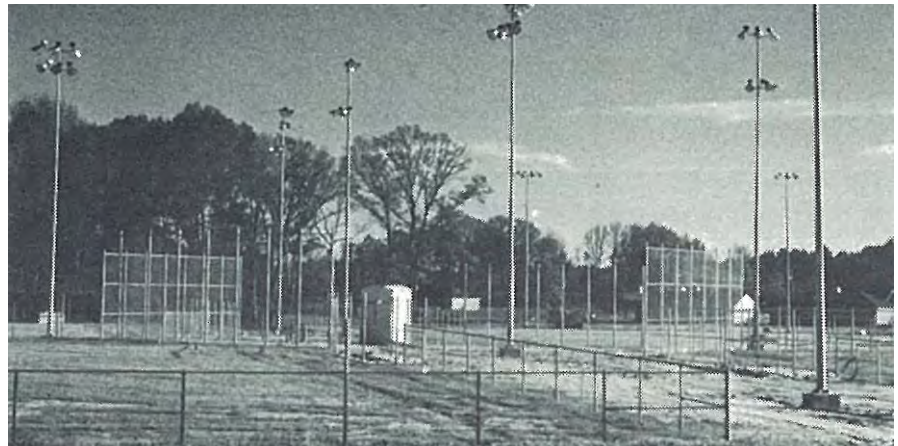
President - Ronald Reagan
Vice President - George Bush
Governor - Bill Allain
Lt. Governor - Brad Dye

The recession continued and 70 United States banks went under.

Mississippi Public Radio went on the air.

The first CD player was introduced by Sony.

The average price of a new house was \$86,730.



Ridgeland received funds totaling \$100,000 to add facilities to parks.

1985



Jointly receiving the Award of Excellence from the National Association of Regional Councils and the Governor's Office of Federal/State Programs are Mayor Charles Fulgham of Yazoo City, President of the Board of Directors and F. Clarke Holmes, CMPDD Executive Director.

The District began 1985 by receiving an award of excellence from the National Association of Regional Councils and the Governor's Office of Federal/State Programs. This award was granted for successfully completing a nationally recognized evaluation process. CMPDD was the first in the state to volunteer to participate and complete this evaluation process.

The District began updating the 1980 Transportation Plan through a series of sub-area analyses which proved to be a cost effective way of keeping transportation planning current without the extensive costs of a full-blown plan revision.

More formalized efforts were initiated to help keep the elderly in their homes longer. The District held a conference entitled "Business and the Elderly: Beyond Corporate Giving" in order to bring attention to the fact that long-term community-based care is an extremely cost effective alternative to institutionalization.

HIGHLIGHTS

- Created a data base of census information and other software programs to provide planning information to local governments and private enterprises.
- In-Home Services increased to include the counties of Copiah, Madison, and Simpson.
- Seniors from St. Joseph High School assisted the District in carrying out its responsibilities with the Ombudsman Program. They volunteered their time to visit area nursing homes and reported to the District on a monthly basis.

President - Ronald Reagan
 Vice President - George Bush
 Governor - Bill Allain
 Lt. Governor - Brad Dye

Route 66 was removed from the United States Highway system.

Justice Ruben Anderson became Mississippi's first African-American Supreme Court Justice.

The first ".com" domain name was registered.

The average income was \$22,100.



Kearny Park in Madison County received a \$191,000 CDBG grant to upgrade water and sewer systems.



The nation's first short-term economic development project under the Community Development Block Grant Program was approved in Hinds County with a low interest loan being made available to create over 200 jobs in the LeFleur's Gallery shopping center.

1986



CMPPDD prepared a CDBG application to obtain economic development funds to allow St. Catherine's Village to locate in the City of Madison.

As in many years, 1986 marked several firsts and beginnings. Probably the most significant was the initiation of the District's current Geographic Information System. After extensive research, the District began to purchase equipment, software, and invest extensive time in becoming technically proficient with this most advanced technology. For the next 2 or 3 years the District would invest extensive resources in placing the best available physical maps in the computer and, therefore, lay a sound foundation for the most efficient GIS in this state.

The community-based long-term care program for the elderly with extensive Case Management capability became much more formalized in the Central Mississippi region. It was becoming more and more obvious that institutionalization was too costly an alternative to providing needed services and facilities



The District's Geographic Information System (GIS) was initiated in 1986.

at one's home. Even more important was the happiness and longevity of the clients.

The name of the District's newsletter was changed from "The Quarterly Review" to the "Central Update."

HIGHLIGHTS

- "The Business Infrastructure Development Act" was passed by the Mississippi State Legislature which authorized the state to issue up to \$100 million in bonds to be made available to local governments for infrastructure improvements necessary to promote economic development.
- Submitted an Urban Development Action Grant application for the City of Jackson allowing a minority owned office building to locate in the Jackson Redevelopment Area.



CMDC participated in the financing of C & S Marine, Inc. on Lakeland Drive.

President - Ronald Reagan
Vice President - George Bush
Governor - Bill Allain
Lt. Governor - Brad Dye

The Space Shuttle Challenger exploded on live television.

The Tennessee Tombigbee Waterway was completed.

The first Laptop was unveiled by IBM.

A gallon of gas cost \$0.89.



- The District prepared a new base map, Zoning Ordinance and Land Use/Thoroughfares Plan for Pelahatchie.
- The District was chosen to coordinate the Magnolia State Golden Age Discount Program for the seven county area.

1987

The District's efforts with computer mapping and data management began to greatly intensify. Maps began to be digitized at a record pace and data systems began to be established which would later formally be known as the Central Mississippi Information Center.

CMPDD received a designation from the United States Department of Commerce as a foreign trade affiliate, therefore providing technical assistance to local businesses wishing to engage in international trade.

The District's data capacity and GIS were beginning to receive national recognition, and the District gave presentations to several symposiums as well as being visited by a professor from France who was preparing The New Universal Geography Encyclopedia.

A proposal was submitted by CMPDD, in conjunction with the City of Jackson, for the purchase and operation of a downtown trolley system. This would later result in the "Steel Magnolia" trolley network that is now in effect.

For the first time in history, the State Legislature enacted a statewide economic development planning law mandating multi-year economic planning using the Planning and Development Districts. F. Clarke Holmes was named to the initial task force to implement the legislation and write the first state plan. Probably the most significant event of the year was the acquirement of land



Geographic Information System (GIS) Technician Lesia Hatcher editing and processing digital map data.

by the District where its current office would later be located.

HIGHLIGHTS

- Assisted Yazoo City in a unique "payback" project which allowed the City to utilize program income from a previous CDBG project to make improvements to the historic Lamar Hotel allowing for additional economic development.
- Received funding approval on four Public Facilities applications. Projects totaled \$1.679 million for water and sewer system improvements in Richland, Crystal Springs, Flora, and Pelahatchie.
- Received funding approval on Housing applications under the CDBG Program. Canton, Hazlehurst, and Yazoo City received a total of \$1.5 million.

- Received the designation of "Associate Office of the U.S. Department of Commerce" which allowed the District to work with the International Trade Administration to enhance and develop export opportunities in central Mississippi.
- Began computer mapping of the Jackson Urbanized Area using photogrammetrically controlled maps provided by the City of Jackson.
- Prepared proposal for funding downtown "rubberwheeled" trolley bus system.
- Continued work with the City of Ridgeland Planning Commission, Mayor and Board of Aldermen in development of a Land Use/Thoroughfares Plan for that city.

President - Ronald Reagan
Vice President - George Bush
Governor - Bill Allain
Lt. Governor - Brad Dye

The Stock Market dropped 22.6% in one day.

Mississippi's Governor Ray Mabus became the youngest Governor to be named in the United States.

The 1st criminal was convicted from DNA evidence.

The average cost of a new house was \$92,000.



CMPDD submitted a proposal in conjunction with the City of Jackson for a downtown trolley system later named "Steel Magnolia."

1988

This year represents much fine tuning and largely a continuation of many existing programs and services. The Governor signed Comprehensive Planning legislation into law defining the elements and process which make up a comprehensive local plan.

After many years the District's Revolving Loan Proposal from EDA was approved. This valuable source of additional financing was finally a reality. It would represent a highly significant direct infusion of dollars into the business community which would continue to grow in significance for many years to come.

The Lower Mississippi Delta Regional Commission would be created by Congress with great anticipation that this would become a permanent organization similar to the Appalachian Regional Commission. This commission is eventually abolished with nothing permanent left in place.

HIGHLIGHTS

- Revolving Loan Application filed with EDA.
- "The Aging Communicator," the District's newspaper for the elderly, was first published.



The District assisted the City of Jackson in obtaining UDAG funding for the construction of The Crossroads, a minority-owned office building in downtown Jackson.

- Prepared and submitted 12 public facility CDBG applications of which 8 received site visits. Of these eight, 4 were approved for funding.
- Finalized voting ward plan for Utica and Edwards. Work was also begun on the Pelahatchie and Flowood plans.
- Established a film library of subjects relating to older persons. The films are available to interested parties upon request.

President - Ronald Reagan
 Vice President - George Bush
 Governor - Ray Mabus
 Lt. Governor - Brad Dye

The United States Senate ratified the Intermediate-Range Nuclear Forces (INF) Treaty between the United States and the Soviet Union.

A voluntary county unit system law was signed by Governor Mabus.

The first Transatlantic Fiber Optic Cable was laid.

The average annual income was \$24,450.



Photos show progress in construction of the Old Canton Road overpass on I-55.



State Auditor Pete Johnson speaks at the CMPDD Board of Directors meeting.

1989



Ms. Kue-tan Yeh of Taiwan and Central Mississippi Adult Day Care Director Karl Seepe observe client activities at the Center.



(pictured left to right) Zoning Administrator Julian Lowther, Mayor Billy Ray Smith and Public Works Director Harold Alderman examine Clinton's newly adopted Land Use/Thoroughfares Plan.

The District was beginning to successfully integrate many of its programs into a comprehensive approach to economic development. Different loan programs were being linked with infrastructure grants as well as training activities to provide a very attractive portfolio of aid to business and industry wishing to locate or expand in Central Mississippi.

The sub-area transportation planning approach was continued but it was quickly being recognized that a totally new transportation plan for the region would soon need to be initiated.

The Geographic Information System began to lay the groundwork for the 1990 Census, and the same mapping

processes of the District would be used. There was much interest from local communities regarding complying with new comprehensive planning legislation.

HIGHLIGHTS

- Twelve projects submitted to Governor's Office under the CDBG Public Facilities Program. Ten projects received site visits.
- Golden Age Discount Program initiated - approximately 422 discount cards issued.

- CMPDD began construction of its new office facility on August 2, 1989.
- CMPDD recodified the municipal ordinances of the City of Ridgeland and the City of Brandon.
- The District held a workshop for the caregivers to the elderly providing information on stress management, daily management techniques, and dealing with grief before and after death.

President - George Bush
 Vice President - Dan Quayle
 Governor - Ray Mabus
 Lt. Governor - Brad Dye

The Savings and Loan Crisis led to nearly 1/2 of all savings and loan associations requiring bailout.

Richard H. Truly became Mississippi's first Astronaut.

Microsoft Office was released.

A gallon of gas cost \$0.97.



Work in progress on Interstate 55 between Meadowbrook Road and Lakeland Drive.

1990



Central Mississippi Planning and Development District moved to new office complex on Lakeland Drive.

By far the most significant event of the year was moving to the new office complex. This project was initiated in September of 1979 and the benefits greatly exceeded anything which could have been anticipated. While this office was built with anticipated growth and expansion capability, it has operated at total capacity and peak efficiency almost from the first day it was opened.

Local governments recognized the importance of total accurate Census counts for their communities and initiated programs to address these concerns. Preliminary 1990 Census figures became available and local governments were called to the District office to review this data as well as file for corrections or recounts where needed.

Officials from EDA in Washington and Atlanta officially toured the Agricultural Museum which is now a multi-million dollar facility and was created on the basis of a small EDA funded feasibility study.

Economic and Community Development projects reached an all time high. There was \$4 million of CDBG funds approved in one year. Included in this was the expansion of the McCarty Farms operation into EDA funded sites in Madison and Warren Counties.

HIGHLIGHTS

- Vicksburg Minority Business Development Project completed.
- Mississippi State Legislature passed legislation to make \$250,000 available to the District for a Revolving Loan Fund for minority owned businesses.
- The Hinds-Madison-Rankin Service District was created.
- A record six CDBG Economic Development Projects were funded, totaling \$2,584,000, causing a private investment of \$33,530,000. As a result, 850 jobs were created.
- Transitional Child Care Program begins.

President - George Bush
Vice President - Dan Quayle
Governor - Ray Mabus
Lt. Governor - Brad Dye

The United States entered a major recession.

Mississippi National Guard played a major role in Operation Desert Storm.

The World-Wide Web was published.

The average price of a new house was \$123,000.



Elected Officials attend a Census Review Seminar held on August 28 at District headquarters. Dr. Max Williams, Director of the Center for Population Studies, outlined census data validity testing methods.

1991



A plan for a civic center, park and lake were included in the Concept Plan for Olde Town Clinton.

The 1990 Census was successfully merged into the District's ongoing Geographic Information System. The capabilities of this system were quickly tested as the District spent a large part of the year engaged in highly complicated, sophisticated, political jurisdictional restructuring. This process was deemed extremely successful because it met in a timely manner all required legal and/or Justice Department guidelines.

President - George Bush
 Vice President - Dan Quayle
 Governor - Ray Mabus
 Lt. Governor - Brad Dye

The Dow Jones topped 3000 for the first time.

American Family Radio was started in Tupelo Mississippi.

Tim Berners-Lee introduced the Web Browser.

The average annual income was \$29,430.

Based upon a new Surface Transportation Efficiency Act passed by Congress, the District formally began the update of the regional transportation plan for the Jackson Urbanized Area. This planning process would be one of the more significant regional activities ever undertaken since it would result in the prioritization and allocation of transportation construction funds over the next 6 years. The Highland Colony Parkway plan was undertaken, involving a new transportation corridor passing through 5 different political jurisdictions.

HIGHLIGHTS

- Vicksburg/Warren County EDA grant awarded to complete infrastructure improvements to Ceres Industrial Park.
- CMPDD's first Minority Business Enterprise Loan was closed.
- Redistricting performed by CMPDD for Hinds, Rankin, and Warren Counties and for the Hinds County School District.
- The District worked with Hinds County and the City of Jackson in preparing a pre-application and application for funds to renovate the Smith-Wills Stadium. The funds for the project were \$650,000 from Jackson, \$825,000 from Hinds County, and \$525,000 from EDA.



Jackson State University student, Louise Covington, a JTPA summer youth worker at CMPDD, inputs data for the Minority Business Directory.



Pictured above are (from left) Clarke Holmes, J. Mac Holladay, Director of the Department of Economic and Community Development, Steve Glaude, Assistant to the Secretary for Intergovernmental Relations, U.S. Department of HUD, and Mayor Sidney Runnels, President of the CMPDD Board of Directors.



Chairman John Tabb addresses the Metropolitan Planning Policy Committee concerning the new Surface Transportation Efficiency Act

1992



Governor Kirk Fordice was the opening speaker at the first MAPDD Conference in Biloxi.

The issues and concerns have not greatly changed over the years, but the technology and sophistication has been greatly enhanced. The District initiated a process to provide local development offices with direct online access to economic development and statistical data. Information and systems used for county redistricting now became invaluable as municipalities begin to re-ward their communities. It was found that the residual data systems left in place from this valuable information being loaded onto the Geographic Information System were even more important than the projects which provided the data initially.

The Mississippi Association of Planning and Development Districts held its first annual spring conference on the Gulf Coast. There were 250 in attendance with Governor Kirk Fordice as one of the principal speakers. CMPDD also entered into a financial arrangement to serve as the staff to the Mississippi Association of Planning and Development Districts (MAPDD), therefore bringing for the first time staff support necessary to address state-wide common issues and concerns.



Director of Economic and Community Development Jimmy Heidel spoke to the Board of Directors. In order to express the importance of teamwork, Mr. Heidel - as one of the original members of the New Orleans Saints football team - was given an original game ball bearing his signature along with the signatures of the other team members.



Central Mississippi Development Company obtained a loan of \$168,120 towards construction at Southern Door and Hardware Supply in Hinds County.

HIGHLIGHTS

- Obtained \$1,335,200 in CDBG funds under the Public Facility, Economic Development, and Urgent Need Programs.
- \$3 million Economic Development project for City of Brandon/Rankin County to construct roads, water lines and sewer lines.
- GIS broadened to include additional census data and E-911 data in Madison and Rankin Counties.
- Loans approved through all loan programs of the District totaled \$17,201,648.00.

President - George Bush
 Vice President - Dan Quayle
 Governor - Kirk Fordice
 Lt. Governor - Eddie Briggs

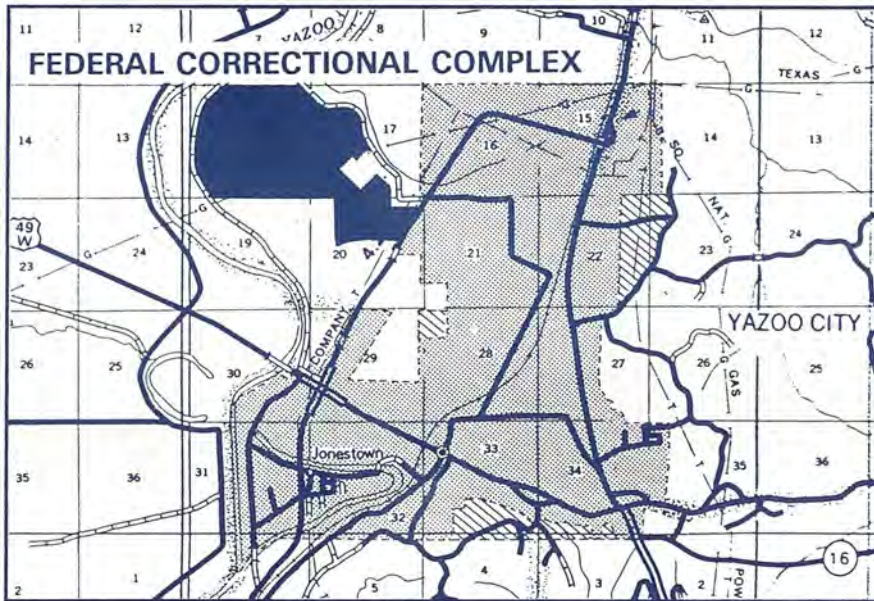
The Great Chicago Flood caused \$1.9 billion in damages.

The first casino in Tunica Mississippi was built.

AT&T released the Video Telephone and it retailed for \$1,499.

A gallon of gas cost \$1.05.

1993



Proposed Federal Correctional Facility to be located in Yazoo County near Yazoo City.

The District began the 1993 year with the most optimistic and comprehensive program of work and budget ever developed for this organization. Regional economic development, which was the original mission of the organization, has returned to become one of the strongest focal points for the region. The District completed a study funded by EDA designed to further identify and enhance regional economic development opportunities and began implementing many recommendations during this year.

Local planning began to reach all new heights with utilization of GIS technology. Projects ranging from full blown comprehensive development plans to specialized studies such as property naming and numbering, and emergency E-911, all utilized this most advanced state-of-the-art technology.

Finally, after over 25 years of existence, a series of legal opinions, rulings, and case law finally clarified the legal status of Planning and Development Districts in Mississippi. In summary, these organizations were found to be chartered, private, nonprofit corporations which were local voluntary membership orga-

nizations of local governments. Further, these Districts were found to be independent entities, but extensions of local government and, therefore, qualifying for a quasi-public status for select purposes, opportunities, and authority. This unique organizational structure was found not to violate the Separation of Powers Doctrine nor pose ethical problems of local officials serving on Planning and Development District Boards.

HIGHLIGHTS

- Began update of 20 Year Transportation Plan to conform to new federal legislation for the year 2015.
- Zoning ordinance for Rankin County completed and nearing adoption.
- CMPDD provides official staff support to the Mississippi Association of Planning and Development Districts through contract.
- State reconfigures economic development offices and boundaries along the alignments of Planning and Development Districts.
- District celebrates 25 years of successful operations.



GIS state-of-the-art technology was utilized in a wide range of projects.



Construction of the Highland Colony Parkway in Madison County.

President - Bill Clinton
 Vice President - Al Gore
 Governor - Kirk Fordice
 Lt. Governor - Eddie Briggs

The North American Free Trade Agreement (NAFTA) was signed.

Mississippi Timber Industry broke the \$1 billion mark.

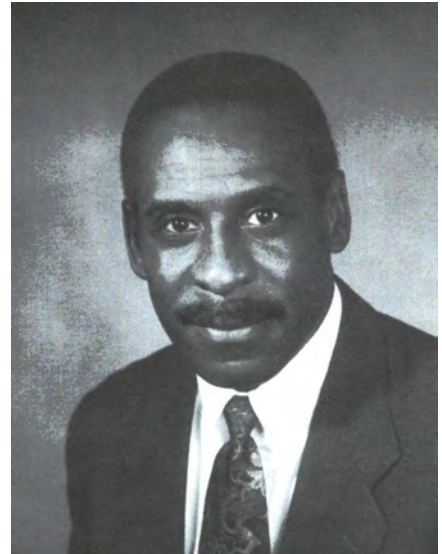
The first human embryo was cloned.

The average price of a new house was \$113,200.

1994



Displaying the Community Development Block Grant check in the amount of \$1,500,000 are (left to right) Bobby Ragland, President of the Yazoo County Board of Supervisors, Yazoo City Mayor Hugh McGraw, CMPDD Planning and Management Division Director Bruce Reynolds, and CMPDD Planner Mike Monk.



CMPDD Human Services Division Director Larry Anderson was named "Financial Services Advocate of the Year for 1994" by the U.S. Small Business Administration (SBA).

The District's success in 1994 began to break new ground not only in economic development, but technology advancement. That year, the American Economic Development Council announced that CMPDD was the recipient of two (2) National Awards. CMPDD's entry for Integrating Map-Info and Dbase Programing received Best of Class, while the Central Mississippi Information Center (CMIC) entry was awarded a superior rating, second place finish. This investment was the beginning of the state of the art means of accessing information for the entire district. Further, CMPDD was able to offer County officials, E-911 staff, and others access to digital mapping information in place of the old drafting methods. CMPDD's first Data Specialist position was created this year to keep up with the technical advancements. These advancements resulted in significant growth for the District and approval of the Work Program containing sixteen (16) individual projects and the largest budget to date. This was done with no increase to local dues the previous five (5) years.

HIGHLIGHTS

- Highland Colony Parkway in Madison County opens. CMPDD was instrumental in developing award winning Land Use/Thoroughfares Plan for Madison County that guided the project.
- The District created the Revolving Loan Fund for Small Business with a check in the amount of \$1,000,000 from the Mississippi Department of Economic and Community Development.
- A Community Development Block Grant (CDBG) was approved for \$500,000 for Miskelly Furniture which resulted in 65 new jobs.
- The Yazoo Federal Prison broke ground after the \$1.5 million CDBG was approved for infrastructure improvements.
- The District developed the Insurance Counseling Program for the elderly living in the district.
- The Medicaid Home and Community Based Services Program was originated.



Miskelly Furniture was approved for a CDBG of \$500,000.

President - Bill Clinton
 Vice President - Al Gore
 Governor - Kirk Fordice
 Lt. Governor - Eddie Briggs

Orange County California filed for bankruptcy protection.

Mississippi passed one of the Nation's strongest Lobbying Reform laws.

Satellite Digital Television Service was introduced.

The average annual income was \$35,900.

1995



Groundbreaking ceremonies were held at the Wynnendale Industrial Park. The Infrastructure improvements were funded with an EDA grant prepared by CMPDD.

This year the District continued to grow in scope, diversity, and leadership. The inter-relationships of the many different functions and activities served as the overall focal point. This area placed itself, through strategic planning over the years, to this year being in a position to reap many future benefits in a changing economic environment. Computerized Radial searches came into play and were provided through the use of our Geographic Information System (GIS). By doing so, a business or industrial prospect could determine if a sufficient clientele existed or if its potential labor force was within a specific mile radius. These results would determine whether or not the location was feasible. The new programs for the Elderly began to evolve and take shape. Many of the projects and activities initiated during this period served as a sound and stable foundation for future effort.

HIGHLIGHTS

- There were a total of 1,404 daily home delivered meals distributed throughout the District to senior citizens unable to leave his or her home without assistance.
- CMPDD's Economic Development Financing Programs approved 15 loans for \$2,964,321. These loans leveraged \$5,851,622 in private capital, resulting in total projects of \$8,815,983 and creating 251 new jobs.
- This year marked the 20th anniversary of CMPDD's designation as the Metropolitan Planning Organization (MPO) for the Jackson Urbanized Area.
- A work plan was prepared by CMPDD for development of a Pavement Management System for all non-state maintained arterial and collector streets and highways in the

President - Bill Clinton
 Vice President - Al Gore
 Governor - Kirk Fordice
 Lt. Governor - Eddie Briggs

A car bomb devastated Oklahoma City Federal Building.

"A Time to Kill" was filmed in Canton, MS.

Ebay started the online shopping website.

A gallon of gas cost \$1.09.

metropolitan area.

- During Fiscal Year 1995, the District operated the first year of the Medicaid Waiver Home and Community Based Program.
- The District assisted Madison County in preparing a new Comprehensive Plan.
- Georgia Gulf completed its multi-million expansion in Gallman. District staff prepared the application of the CDBG funds for the railroad spur.



Artisans hand-paint mugs at the Gail Pittman Studio in Ridgeland. A portion of a \$390,000 expansion at the ceramics manufacturing plant was funded with a \$100,000 loan from the Mississippi Small Business Assistance Loan Program.



Mississippi's First Lady, Mrs. Pat Fordice, presents a JTPA Certificate of Accomplishment to Mrs. Linda Morgan of Copiah County.

1996



EDA Grant for Wynndale Industrial Center.

This year was a turning point for the District. While the large block of grants to state and local government did not come about as projected, the intent and general acceptance was clear. This year demonstrated that it was not a matter of "if" the federal government reduced its domestic assistance program rate, but "when". The days of the federal government collecting revenue and redistributing it back to the state and local government to meet national public concerns were slowly closing. The state and local governments now faced the responsibility to generate revenue if a program was to continue. The role of CMPDD became more important than

ever. The District was created to be used as a mechanism to decentralize decision making to the lowest practical level and to act as a service delivery system that could do more with less.

The District made some more major investments in technology this year in order to meet the growing challenges. CMPDD's Data Center began offering an additional service to local government and private enterprise through the use of modern traffic counting/classifying equipment. This new equipment could produce data on vehicle classifications as well as on traffic volume and speeds. Also, the Visual Industrial Site Information Organizing Network (V.I.S.I.O.N.) began the process of development at CMPDD. V.I.S.I.O.N. is a tool for public and private sector parties interested in economic development. The data management program was on CD-Rom and included digital maps, infrastructure information, and basic demographics. The ability to merge computerized maps with various data sets took on an increased significance.

HIGHLIGHTS

- The District assisted in getting over \$1.6 million in CDBG Public Facility grants approved for 5 communities in the district area.



Planner David Wade records road surface data.

- Job Opportunity and Basic Skills (JOBS) Child Care was provided to 138 children in the central MS area.
- The Legal Assistance Program helped 337 older adults to resolve legal problems this year.
- CMPDD in conjunction with the Mississippi Department of Human Services (MDHS)/Division of Aging and Adult Services, contracted for a Comprehensive Statewide Needs Assessment of the older population in the seven-county area. This assessment provided CMPDD and MDHS with much needed data on the state's fast-growing older population.
- Rankin County was awarded a \$250,000 grant to construct a multi-purpose livestock facility. The application was prepared by CMPDD.



Madison Mayor Mary Hawkins and CMPDD Planning Director Larry Smith pictured in front of Madison's Future Land Use Plan map.

President - Bill Clinton
 Vice President - Al Gore
 Governor - Kirk Fordice
 Lt. Governor - Ronnie Musgrove

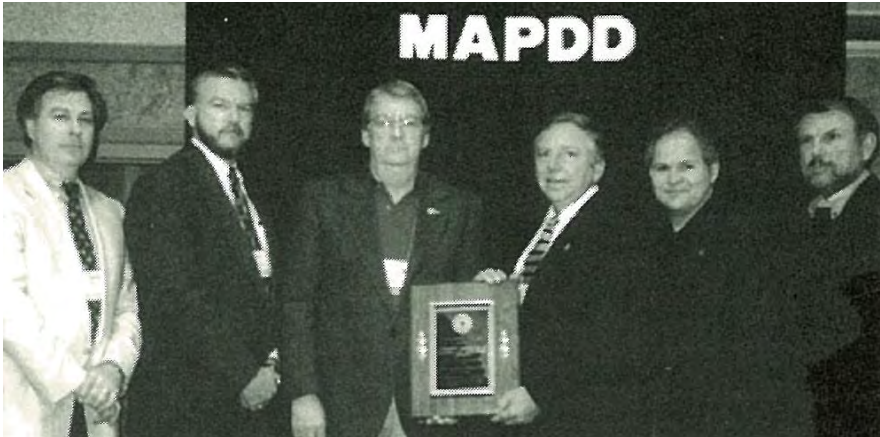
The stock market ended the year over the 6000 mark.

Mississippi Senator Trent Lott became the Senate Majority Leader.

Windows 4.0 was released by Microsoft.

The average price of a new house was \$118,200.

1997



Pictured with the RAY Award, presented each year by NARC to the top regional association, are (left to right): Clarke Holmes, CMPDD; Don Elder, NEMPDD; Bob Williamson, NCPDD; John Eplin, NARC; Rudy Johnson, GTPDD; and Colbert Crow, ECPDD.

This year was a year full of changes in the economic and political climate. The District helped provide continuity and consistency during this time of change. The senior staff of CMPDD remained intact, with six (6) of the senior staff members averaging well over 25 years of experience. This level of experience enabled CMPDD to operate at a management level where many difficult problems and concerns could be handled as routine issues and matters. The investment in our employees provided a solid infrastructure that allowed CMPDD to move into another level of advanced management and technology.

President - Bill Clinton
 Vice President - Al Gore
 Governor - Kirk Fordice
 Lt. Governor - Ronnie Musgrove

Microsoft became the world's most valuable company valued at \$261 billion.

World Com and MCI Communications announced the largest merger in history

The Internet Explorer version 4 was released.

The average income was \$37,006.

HIGHLIGHTS

- Clinton adopted a new Zoning Ordinance, including a new Official Zoning Map. This map was the first computerized zoning map to be adopted in Mississippi. The map was prepared using the District's Geographic Information System and included a full-color map displayed in City Hall.
- The Metropolitan Planning Policy formally approved the Year 2020 Jackson Urbanized Area Transportation Plan.
- CMPDD became involved with the Year 2000 Census. The District set up a series of meetings in the area and helped its counties to update their maps for a more accurate count.
- The District approved 20 loans for \$2,866,611 in its Economic Development Financing Programs this year.



Seniors enjoying an activity at the UMC Adult Day Care Center.



Madison County received a \$750,000 CAP loan to make much needed improvements to both the interior and exterior of the Madison County Cultural Center.

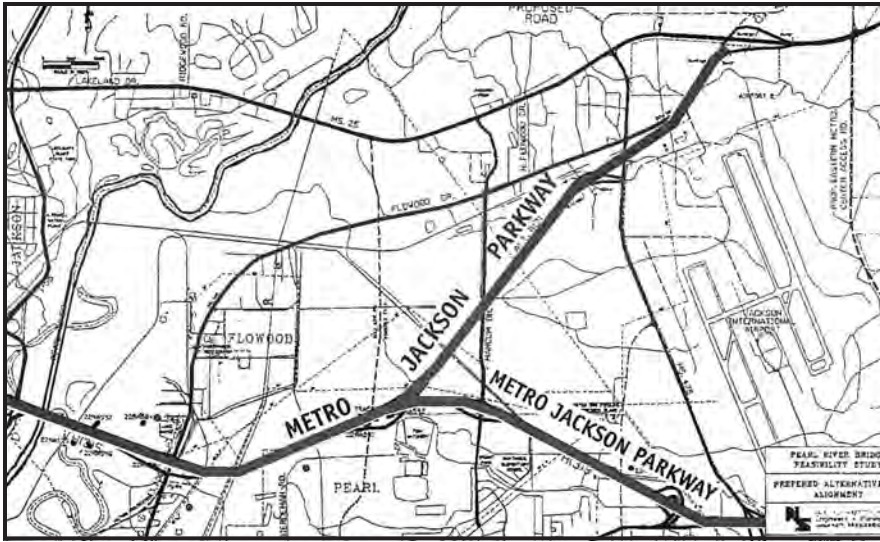
These loans leveraged \$6,204,844 in private capital which resulted in total projects of \$9,071,455 and the creation of 238 jobs.

- In October Mississippi made changes to its Welfare Program. These changes were due to the new Federal Reform Law. This new law ended Aid to Families with Dependent Children (AFDC) and replaced it with Temporary Assistance for Needy Families (TANF) Work Program. The TANF Work Program also replaced the Job Opportunities and Basic Skills (JOBS) Work Program.



Left to right: CMPDD Senior Planner William Peacock, Natchez Planning Director James Shelby, Bob Dotson of the Natchez Trace Parkway, and CMPDD Planning Director Larry Smith review the preliminary Natchez Land Use and Thorougfares Plan.

1998



The proposed Metro Jackson Parkway, conceived to extend High Street across the Pearl River to connect downtown Jackson with the Jackson International Airport, was a major factor in both the Pearl and Flowood Comprehensive Plans.

This year saw three (3) major issues emerge from the 105th Congress that were extremely important to this region. First, Congress enacted the largest public works law in history with the TEA21 Legislation. This law continued the importance of local governments and intergovernmental cooperation through the use of the Metropolitan Planning Organization (MPO) process, which helped to ensure funding while adopting a long-range transportation plan. In addition there were quite a few special projects that were approved as part of this legislation.

The next congressional action was the re-authorization of the Economic Development Administration (EDA). This agency of the U.S. Department of Commerce has participated in the construction of virtually every industrial park in central Mississippi. The stability of permanent authorizing legislation was a major accomplishment.

Another significant event was the passing of the Work Force Investment Act (WIA). This continued the employment and training efforts of the U.S. Department of Labor and recognized local governments as the building

blocks upon which these structures were formed. The Central Mississippi Service Delivery Area, due to its prior performance was given a grand-fathered status in this new legislation. These changes allowed local governments to maintain their independence and autonomy while it allowed services and facilities to be regionalized when found to be beneficial and cost effective.

HIGHLIGHTS

- CMPDD staff contacted local governments in an attempt to determine which municipalities and counties are in compliance with Mississippi planning law regarding their comprehensive plans and zoning ordinances. As a result the District contracted with the governments of four (4) cities: Canton, Crystal Springs, Flowood, and Raymond, which were determined to be in need of updates.
- The Transportation Equity Act for the 21st Century (TEA-21) provided \$28,140,317 in federal Surface Transportation Program (STP) funds to the District for use in Jackson Metropolitan Area over the six (6) year life of the act (1998-2003).

President - Bill Clinton
Vice President - Al Gore
Governor - Kirk Fordice
Lt. Governor - Ronnie Musgrove

The Dow Jones dropped over 500 points on August 31.

Hurricane George hit the Mississippi Gulf Coast.

Google was formed.

A gallon of gas was \$1.15.

- A total 2,080 children were served under the Child Care Development Block Grant (CCDBG) Program and the At-Risk Child Care Program.
- The Mississippi Insurance Counseling Assistance Program (MICAP) served 328 elderly and disabled clients in our area by answering questions about health insurance and Medicare/Medicaid eligibility.
- The Summer Youth Employment and Training served a total of 279 youths with 257 (92%) completing their Employability Enhancement requirements by the end of the summer.



Construction of the Reservoir Bikeway/ Pedestrian Trail.



The Sleep Inn opened near the Jackson International Airport and was financed in part with a \$750,000 loan approved last year by the CMDC.

1999



On March 10, the CMPDD Board of Directors hosted a luncheon to celebrate the District's 30th year of operation.



This year CMPDD celebrated Thirty (30) years of engaging efforts to improve the quality of life and economic betterment of Central Mississippi. The diversity of these efforts in the wide range of functions and activities was proving to be our greatest strength. The District had established itself as a leader in its field and people across the country were beginning to take note. The Central Mississippi Service Delivery Area (CMS-DA), similar to current Southcentral Mississippi Works, continued to expand its partnership with all agencies or institutions engaged in human services and job training. Economic development efforts were alive and well as the District helped to secure over \$1.8 million in Community Development Block Grant (CDBG) Economic Development Public Improvement Grants for several communities. The Geographic Information System (GIS) Division of CMPDD once again proved to be a major support service of the District. All of this was achieved without raising the local membership dues for the tenth year in a row.

HIGHLIGHTS

- In September of 1999, the Mayor and Board of Aldermen of the City of Pearl voted unanimously to adopt a new Comprehensive Plan prepared by the District.

- A Transit Technical Committee (subcommittee of the District's Intermodal Technical Committee) was organized to guide preparation of the Regional Transit Plan.
- The District prepared and submitted a grant application on behalf of the City of Canton. Canton was awarded the grant in the amount of \$1,248,000 to make necessary infrastructure improvements to support the expansion of Peco Foods, Inc.
- Small Business Loan Projects totaling \$4,921,628 were approved by the District. The Mississippi Small Business Assistance Loan Program funded \$1,405,175 of that total. These loans produced 123 jobs.
- Adult Daycare services for the metro Jackson area provided 3,323 hours of care to eligible clients during 1999 with an average daily attendance of 28-30 persons per day.



Construction began on the Polk's Meat Products processing plant in Simpson County Industrial Park in Magee.



Widening of Lakeland Drive in Flowood.

- During Fiscal Year 1999 there were 204 participants who received on the job training and individual referral training to dislocated workers in the client assessment/case management system operated by the Central Mississippi Service and Delivery Area (CMSDA).

President - Bill Clinton
 Vice President - Al Gore
 Governor - Kirk Fordice
 Lt. Governor - Ronnie Musgrove

The Y2K problem and the Millennium Bug were of the utmost concern.

The Delta Blues Museum moved to Clarksdale.

The Blackberry phone was invented.

The average price of a new home was \$131,750.

2000



Construction on the interchange at I-55 and MS Highway 463 in Madison.

The start of a new century was a year of preparation for a major economic development project of massive magnitude. This billion dollar industrial project was the Nissan Manufacturing Plant in Canton. A large part of CMPDD's involvement in that process was to ensure that the site, surrounding area, and the entire region was equipped from an infrastructure standpoint to accommodate the location of such a massive facility. This largely involved combining many different types of funding resources, with an emphasis on federal grants to construct needed and necessary improvements. It also involved ensuring that the land use requirements, transportation, utilities, environmental concerns, and workforce development were all available and operating in a comprehensive and coordinated manner.



State Auditor Phil Bryant talks with MAPDD Conference participants in the Display Hall.

Special federal legislation was written to ensure that the site under consideration was eligible for all types of qualified aid. We were quite fortunate to have an information and data gathering mechanism in place to handle the time constraints we faced at the time.

HIGHLIGHTS:

- CMPDD prepared a Public School Facilities Plan for the Rankin County School District.
- A groundbreaking ceremony occurred for the Clinton Parkway that linked north and south Clinton. The Districts' Metropolitan Planning and Policy Committee committed \$7,921,436 in Federal Surface Transportation Program funds, made available through the District from the Intermodal Surface Transportation Efficiency Act (ISTEA) and the Transportation Equity Act for the 21st Century (TEA-21).
- In Fiscal Year 2000 the Central Mississippi Information Center (CMIC), now referred to as our Regional Data Center, prepared a Jackson Metro Area Workforce Assessment for the Metropolitan Economic Development Alliance (MEDA). The District

President - Bill Clinton
 Vice President - Al Gore
 Governor - Ronnie Musgrove
 Lt. Governor - Amy Tuck

The Dot.com Bubble burst and thousands went broke.

A chain reaction collision in Moss Point involved sixteen (16) cars, two (2) tour buses, and two (2) eighteen wheelers killed five(5) people.

The first GPS was introduced.

The average annual income was \$40,343.

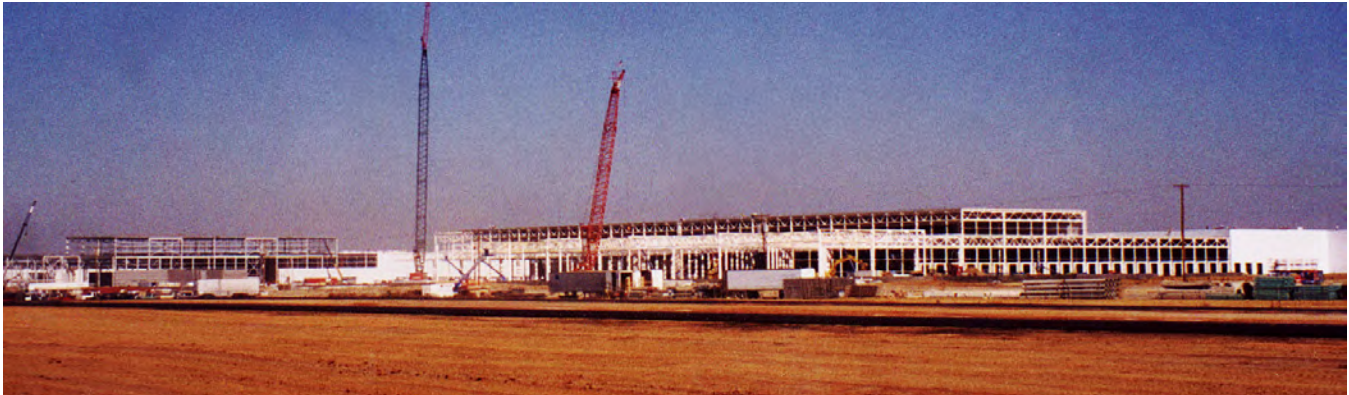
was contracted to study the workforce availability in the metro area and surrounding counties.

- The Central Mississippi Service Delivery Area (CMSDA) provided academic and work based training activities to 106 out of school youths through a contract with Education and Training Resources.
- CMSDA served 150 low income adults with occupational training and job placement services and 84% were working three months after completing the program.



Above left: A \$100,000 MSBALP loan partially financed McGee's Pennzoil Express Lube and Detail.

2001



Construction of the Nissan plant in Madison County.

This was definitely a year of highs and lows. As for regional economic development the announcement of the location of Nissan North America plant in Madison County was by far the most outstanding event. With a projected workforce of 4,000 inside the Nissan Plant and possibly another 4,000 people employed by suppliers, the impact to our economy was enormous. This was the greatest single economic development in our region to date.

By far the lowest point in this year was the September 11th terrorist attack on our nation. The loss of life and property is without precedent and it took many years to overcome the resulting economic losses. Thankfully CMPDD had prepared itself to offer needed assistance during times of disaster and hardship.

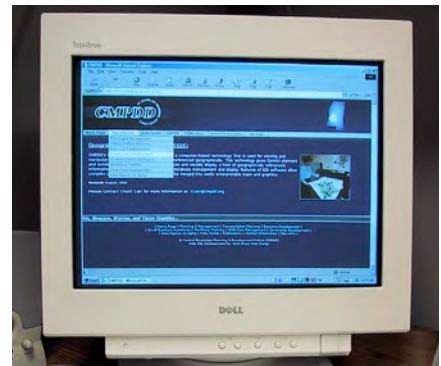


The WIN Job Center in Pearl.

HIGHLIGHTS

- In December, the District began an analysis of the impact the \$930 million Nissan plant would locate near Canton.
- CMPDD signed a contract with the Emergency Management Office of Rankin County to update and revise their Emergency Management Operation Plan.
- CMPDD assisted the City of Jackson in obtaining an EDA grant in the amount of \$1.5 million for infrastructure improvements needed within the Farish Street Entertainment District.
- This was the first year of operation for Southcentral Mississippi Works. They concentrated on delivering training services to individuals. This training was provided by either Individual Training Accounts or formal On-The-Job Training.

- During the Fiscal Year 2001, the District paid a total of \$17,746,123 to Center-Based and Home-Based Childcare Providers. A total of 8,499 children were served through the Certificate Program.
- The Home-Delivered Meals Program which receives the highest percentage of funding through the District, served 1,565 daily meals in Fiscal Year 2001.



The redesign of the District's website.

President - George W. Bush
Vice President - Dick Chaney
Governor - Ronnie Musgrove
Lt. Governor - Amy Tuck

Hijackers crashed 2 planes into the World Trade Center on 9-11.

The First year Mississippi cotton farmers did not lose any yield to the boll weevil.

The iPod was released by Apple.
A gallon of gas was \$1.46.

2002



As Mayor Al Gary (left) and city officials look on, Gov. Ronnie Musgrove signs a CDBG check for \$300,000 for the City of Mendenhall. The funds were to replace approximately 6,700 feet of old asbestos-cement water mains.

In the aftermath of September 11, 2001, a new initiative of strengthening the domestic security of this region and nation emerged, and local governments had to start playing a more active role. It became evident that national security could only be effective if there was a strong, comprehensive, and coordinated effort at the local and regional level. Efforts were initiated during Fiscal Year 2002 to bring about a comprehensive partnership in fighting domestic terrorism and improving national security. These efforts were extended throughout the next several years.

HIGHLIGHTS

- The District completed the Rankin County Emergency Operations Plan update. This Comprehensive Emergency Operations Plan consisted of a basic plan, supporting Emergency Support Functions for each emergency service or function, and a Hazard Specific Annex detailing Rankin County's most likely hazards.
- CMPDD conducted three (3) urban planning seminars around the state for municipal officials in March. The seminars took the officials from the roots of urban planning in the United States to the elements of the Comprehensive

Plan, as required by Mississippi law, to the implementation of the Comprehensive Plan through zoning ordinances, subdivision regulations, and other development-related regulations.

- CMPDD, as a census data affiliate, received 813 tables of Census 2000 social, economic and housing characteristics down to the block group or census tract levels for Mississippi. This detailed data served as benchmarks for state and local planners for the first decade of the 21st century.
- During Fiscal Year 2002, the District was able to secure a total of \$5.3 million in CDBG Economic Development Public Improvement grants for Canton, Hazlehurst, and Madison County.
- The District approved 20 small business loans for \$1,579,557 in its Economic Development Financ-



The widening of Spillway Road, including the new bridge, was completed in 2002.

President - George W. Bush
 Vice President - Dick Cheney
 Governor - Ronnie Musgrove
 Lt. Governor - Amy Tuck

President Bush created Homeland Security.

World Com filed for bankruptcy.

The Camera Chip was invented.

The average cost of a new house was \$228,700.



The Mississippi Employment Security Commission in Pearl, one of the "One-Stop" WIN Job Centers serving the Southcentral Mississippi Works area.

ing Programs. These loans leveraged \$3,319,853 in private capital, resulting in total projects of \$4,899,410 and creating 128 jobs.

- The District served an average caseload of 1,023 clients monthly with the Elderly and Disabled Home and Community-Based Waiver Program (Medicaid Waiver).

2003



Dick Hall, Central District Transportation Commissioner, speaks at the Interchange Opening Ceremonies. The unique new interchange design has proven very successful in alleviating traffic problems at the I-55/Madison Interchange.

By the year 2003 issues and activities had become more involved and complex. Projects and programs were starting to involve multiple jurisdictions and requiring several forms of financing from federal, state, local, and private. Much of the year was spent securing funding and planning for the huge growth in the north area of the District due to the North America Nissan Plant. The success of the Nissan Plant brought the importance of industrial site planning to a new level in the District's seven (7) counties. District staff completed the inventory and digitizing process for the twenty (20) public industrial parks located throughout the District.

HIGHLIGHTS

- On June 17, 2003, the Mayor and Board of Aldermen of Florence adopted a new Comprehensive Plan developed by the District.
- The District assisted the Madison County School District in preparing for a U.S. Department of Education grant to conduct a School Needs Assessment.
- CMPDD assisted Yazoo County with preparing a proposal for submission to the Economic Development Administration (EDA) which resulted in the County being awarded a Technical Assistance Grant to conduct an Industrial Site Location Plan.



Aerial Photograph of Ceres Research and Industrial Interplex in Warren County.

- Southcentral Mississippi Works utilized a \$1.4 million grant from the Employment Training Division of the Mississippi Development Authority to plan, design, and develop a state-of-the-art WIN Job Center in Madison County.
- CMPDD was instrumental in obtaining a \$5 million Workforce Investment Act (WIA) "Earmark" grant from the U.S. Department of Labor to provide workforce training to automotive industry employers in Mississippi.
- The Adult Day Care Centers in the metro Jackson area (operated by CMPDD) provided 2,925 hours of care to eligible clients during 2003, with an average of 25-28 persons per day.

President - George W. Bush
 Vice President - Dick Chaney
 Governor - Ronnie Musgrove
 Lt. Governor - Amy Tuck

Interest rates reached a record low of 1%.

The Nissan Plant opened in Mississippi.

Apple launched iTunes.

The average annual income was \$42,409.



Construction of the Wee Care Child Care Center, funded in part by a loan from CMDC.

2004



The Madison Station Elementary School built off Bozeman Road. This alleviated many traffic problems at the school's former location in downtown Madison.

CMPDD enjoyed quite a productive year in 2004. The largest impact made was in the area of workforce development. The Madison County WIN Job Center continued to develop to meet the rapidly changing workforce needs resulting from the location of the Nissan North America Plant in Canton. The District continued to support an extensive employer driven training program that targeted workers recently hired by Nissan and supplier industries. South-central Mississippi Works responded to major closures and layoffs occurring mainly in the southwest portion of the State by forming a comprehensive approach to the needs of the dislocated workers.

Even with some closures economic development was alive and well. The number of new businesses was growing and so was the need for funding. With the combination of all the above 2004 was a very busy year for CMPDD.

HIGHLIGHTS

- The District assisted Copiah County in obtaining \$850,000 in Community Development Block Grant (CDBG) funds that were used to construct infrastructure improvements to support the location of DB Foods, Inc. to the Copiah County Industrial Park in

Gallman. In addition the District helped to secure a Capital Improvements Revolving Loan (CAP Loan) in the amount of \$500,000 to construct improvements to the building.

- The Town of Bolton received approval for \$73,991 in CDBG Emergency Public Facility funds to reconstruct a section of collapsed sanitary sewer main that occurred in April, 2003 due to heavy rains and flooding.
- The CMPDD Area Agency on Aging sponsored a forum to help educate seniors, caregivers, agency heads and officials concerning the changes in Medicaid and Medicare programs.
- District staff was busy working with each of its forty (40) jurisdictions developing, implementing, monitoring, and maintaining a comprehensive multi-jurisdictional hazard mitigation plan.
- During 2004 CMPDD began a new program named CentCom, which is a broadband networking service that allows for information sharing between offices at the municipal and county level.



A Child Care Specialist informs Active Certificate parents of changes in the child care certificate program for Fiscal Year 2005.



The City of Ridgeland was awarded a CDBG grant of \$620,000 to provide a loan to Gail Pittman, Inc. to expand their production capacity and create 31 jobs.

President - George W. Bush
 Vice President - Dick Cheney
 Governor - Haley Barbour
 Lt Governor - Phil Bryant

Colin Powell resigned and Condoleezza Rice was nominated as his replacement.

Atlanta Braves Class AA farm team began to play in Pearl Mississippi.

Facebook was launched.

A gallon of gas cost \$2.10.

2005

President - George W. Bush
 Vice President - Dick Cheney
 Governor - Haley Barbour
 Lt Governor - Phil Bryant

Hurricane Katrina struck Mississippi, Louisiana, and Alabama coastal areas.

The Natchez Trace Parkway was completed.

YouTube was founded.

The average price of a new house was \$297,000.



Teresa Burrell, Case Management Supervisor for CMPDD, leads a workshop for Medicaid Waiver providers.

Much of fiscal year 2005 was business as usual, that is until August 26, 2005 when Hurricane Katrina devastated the Mississippi Gulf Coast. Unlike previous hurricanes, Katrina's size caused devastation over a much larger area with hurricane force winds reaching well into central Mississippi. While the devastation in central Mississippi was not nearly as great as that of south Mississippi, we never-the-less felt a great impact. CMPDD and the local governments in central Mississippi responded quickly in a collective manner to provide much needed aid and assistance to not only our area, but to our harder hit neighbors as well. All the local governments in central Mississippi, acting through leadership from the District, had recently prepared and approved pre-disaster mitigation plans. This process not only helped to lessen the harmful effects of Katrina, but proved to be a sound foundation for various types of future federal and state financial assistance.

HIGHLIGHTS

- At the September 20, 2005 Board Meeting, the Mayor and Board of Aldermen approved a contract for CMPDD to develop a new ward plan for the City of Pearl.
- Madison County approved a new Comprehensive Plan for the County which was prepared by the District in response to Nissan North America's construction of a \$930 million manufacturing plant.
- During Fiscal Year 2005, CMPDD signed a contract with the Madison County School District to make recommendations regarding sixteenth section land inside the School District.
- In January, 2005, the District submitted 26 Hazard Mitigation Plans to MEMA for review. After review, they were adopted by local governments. Each Jurisdiction then became eligible to apply for Hazard Migration Grant Funds.
- The District worked with the Southwest One Regional Response Team (SWIRT) to develop a Chemical, Biological, Radiological, Nuclear, and Explosives (CBRNE) Response Plan.
- The District approved 80 loans for \$9,263,155 in its Economic Development Financing Program. These loans leveraged \$10,617,626 in private capital resulting in 539 jobs.
- The District received \$10,000 in Federal funds to administer a Prescription Assistance Program. It provided one-on-one counseling to individuals needing assistance with accessing medications at reasonable costs.



(left to right) U.S. Health & Human Services Sec. Mark Leavitt visited Mississippi to promote Medicare drug coverage. MDHS Dir. of Aging Marion Tutor and CMPDD Dir. of Aging Bettye Burgess worked locally to educate seniors about this plan.



A youth workshop class met Lt. Gov. Amy Tuck (second from left) and other officials during a trip to the state capitol.

2006



Funds were used for an access road to support a location/expansion of Belk, Inc. to the Greater Jackson Industrial Park.

A large portion of Fiscal Year 2006 was focused on recovering from the aftermath of Hurricane Katrina. Congress created the Gulf Opportunity Zone and this zone included 2/3 of Mississippi. Most of our area was included and eligible for funding. Katrina obviously had a devastating impact on the entire state. It became evident that many workers displaced by the storm, would need to develop new careers. Southcentral Mississippi Works under the National Emergency Grant, was able to assist 1,200 hurricane victims with over 800 receiving workforce training services. In January, 2006 the District began serving as the liaison between Mississippi Emergency Management Agency (MEMA) and the other nine (9) Planning and Development Districts to assist and coordinate the approval process for local Mitigation

Plans. In addressing the issues from this catastrophic event, the diversity of the District proved to be of great assistance.

HIGHLIGHTS

- On March 30, 2006 the Metropolitan Policy Organization (MPO) formally endorsed the 2030 Jackson Urbanized Area Transportation Plan final report, containing cost estimated and revenue sources for all projects included in the vision plan.
- The MPO of CMPDD committed \$34,909,772 in Federal Surface Transportation Program (STP) funds to roadway improvements in Hinds, Madison, and Rankin counties.
- CMPDD assisted the City of Pearl in obtaining a \$1 million public works grant from the Economic Development Administration (EDA). This grant was used to construct an access road in the Bloomfield Properties Development that served Bass Pro Shop and Trustmark Park Stadium.
- Yazoo City received final approval of two (2) grants under the Self-Help program. Together these projects received a total \$440,000 in CDBG funds for the phase II of improvements to three (3) additional blocks on Main Street and a recreational community playground.
- The Town of Pelahatchie received approval of \$150,000 under the Rural

Impact Funds (RIF) and \$270,000 under the Capital Assistance Revolving Loan (CAP) Program for the construction of water and sanitary sewer improvements to support the location of a Yogi Bear's Jellystone Park Camp-Resort at Pelahatchie Lake.

- The District received \$120,025 in funding under Title V Senior Community Employment Program, to employ sixteen (16) individuals to work in community service.



Officials applaud the opening of the widened Old Canton Road in Ridgeland.



The City of Magee sought \$235,700 in CDBG funds to support the expansion of Magee General Hospital.

President - George W. Bush
 Vice President - Dick Chaney
 Governor - Haley Barbour
 Lt Governor - Phil Bryant

Saddam Hussein was killed.

The Mississippi Eudora Welty House opened to the public.

Twitter was launched.

The average annual income was \$58,029.

2007

President - George W. Bush
Vice President - Dick Chaney
Governor - Haley Barbour
Lt Governor - Phil Bryant

The Housing Bubble burst.
The new facility was finished for the Mississippi Museum of Art.
The iPhone was introduced.
A gallon of gas was \$3.38



In 2006, Surface Solutions received a \$455,200 SBA loan as part of a \$1,138,000 project to expand their manufacturing space and create 11 new jobs.

The aftermath of Hurricane Katrina and the growth in Madison County due to the North American Nissan Plant had begun to slow down. The focus returned to preparing the region for continued growth and stability. The District formed the first Central Mississippi Mayors Association (CMMA) to help strengthen the local governments through intergovernmental and regional cooperation. CMPDD continued to provide planning education opportunities by sponsoring the first ever joint conference with American Society of Landscape Architects (ASLA), and the Mississippi Chapter of the American Planning Association. CMPDD also conducted district wide Comprehensive Planning seminars. Also, the District's Area Agency on Aging division was expanding its services. The Mississippi Department of Human Services/Division of Aging and Adult Services selected CMPDD to become the first Aging

and Disability Resource Center in the State. The combination of many activities, projects, and solutions during 2007 helped to improve the social, physical, and economic well-being of the seven county area.

HIGHLIGHTS

- CMPDD completed its draft of the City of Canton's Unified Development Code, which included all of the city's development-related ordinances.
- CMPDD hosted a promotional workshop of the Local Update of Census Addresses (LUCA) Program for the U.S. Census Bureau.
- The Central Mississippi Mayors Association (CMMA), organized by

the District, received the National Innovation Award from the National Association of Development Organizations (NADO) for their commitment to improving local government through regionalism.

- During Fiscal Year 2007, Southcentral Mississippi Works enrolled over 20,000 individuals, many of whom received some form of occupational training.
- CMPDD conducted a feasibility study for a Biotechnology Research Park proposed for location near the University of Mississippi Medical Center.
- Medicaid Waiver Home and Community Based Waiver Program managed 1,015 clients.



The District submitted an application for Copiah County for \$500,000 to partially fund the purchase of two fire trucks and the associated equipment.



CMPDD staff (left to right: Chuck Carr, Larry Smith, Belinda Graham) meet with Madison County School District Superintendent Mike Kent (r) to discuss revisions to Attendance Zones and enrollment projections.

2008



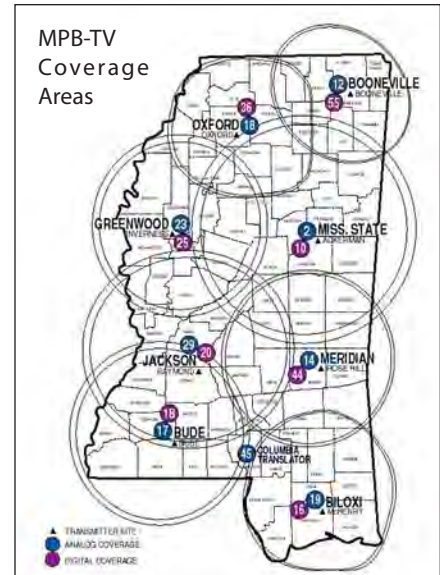
Pelabatchie Mayor Knox Ross accepts the Governor's Award. Shown with him are CMPDD CEO Clarke Holmes and Jellystone mascots Yogi Bear, Cindy, and Boo Boo.

By any measure Fiscal Year 2008 was a very successful year. The demand for quality services, facilities and infrastructure were higher than ever. The District consulted with thirty-five (35) local governments in preparation of new comprehensive plans and acted on major upgrades to twenty-six other communities in various forms of technical assistance. There were over thirty (30) grant applications prepared by CMPDD and an excess of \$10 million in grant funds were received by our municipalities and counties. The District's Area Agency on Aging continued to administer nu-

merous programs for senior adults in the region, such as nearly 400,000 meals delivered to home-bound adults. These accomplishments were made possible through our collaboration with the local governments in the CMPDD area.

HIGHLIGHTS

- The District assisted the Greater Jackson Alliance with conducting a labor market assessment by partnering with the Mississippi Development Authority and the District's Workforce Board to provide funding for the study.
- The Federal Emergency Management Agency (FEMA) approved the District for pre-disaster mitigation applications, which allowed the District to update and revise for its local government's disaster mitigation plans that are currently in place.
- CMPDD worked with the Mississippi Association of Planning and Development Districts (MAPDD) and the Forestry Commission to develop a statewide process for preparing County Wildfire Prevention Plans (CWPP) and Fire Cause Analysis Plans (FCAP) for all eighty-two counties.



The WIN Job Fair Telethon on MPB covered the state and resulted in several hundred calls from both job seekers and potential employers.



SW1RRT members participating in USAR Refresher Course.

- The Small Business Loans through CMDC in the amount of \$19,241,000 leveraging \$67,886,000 in total investments created 581 jobs.
- The District as a part of the Workforce Development Program, served over 100,000 people.
- The Adult Daycare Centers provided 3,084 hours of care to eligible clients.

President - George W. Bush
 Vice President - Dick Chaney
 Governor - Haley Barbour
 Lt Governor - Phil Bryant

President Bush and House leaders agree to a \$150 billion stimulus package.

The first Mississippi Blues Marathon was held.

Apple sold the first Air Mac Book.

The average price of a new house was \$238,880.

2009



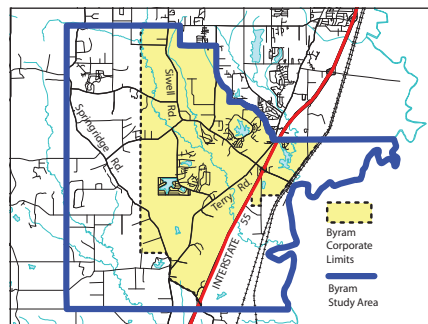
Groundbreaking for Advance Auto Parts project.

There were numerous accomplishments achieved during 2009. CMPDD received both national and statewide awards for creative and innovative development projects that the District assisted in bringing together. The City of Raymond's Downtown Square Improvements received the Governor's Community Projects of Excellence Award in the Best Small Municipalities and Limited Counties category. The National Association of Development Organizations (NADO) Innovation Award was given to the District for working with the Mississippi Technology Alliance as the Regional Innovation Coordinator to promote and encourage Innovation-Led Economic Development (ILED) in the region. In addition, the Simpson County-Pioneer Health Services, Inc. expansion project receive a NADO Innovation Award as well. This year helped prove that CMPDD's model of intergovernmental cooperation, which was created over forty (40) years ago, was proving to be extremely beneficial to this growing and vibrant region.

HIGHLIGHTS

- The City of Byram became the District's thirty-fourth (34) municipality in June, Mayor Nick Tremonte was sworn in and the City's mayor.

- The District performed traffic projections for downtown Jackson streets based upon full development of building projects in the area.
- The Town of Braxton received \$300,000 to renovate, refurbish, furnish, equip, and convert a vacant town owned building into a Community Center. The District assisted with the preparation of a CDBG Community Self-Help application for this project.
- The District approved 17 loans for \$13,977,111 in its Economic Development Financing Programs during Fiscal Year 2009. These loans leveraged \$28,253,742 in private capital resulting in total projects of \$42,250,742 and created or retained 301 jobs.
- Southcentral Mississippi Works provided services to 2,694 youths.
- The Adult Day Care Center operated by the District provided 3,084 hours of care to eligible clients.



Byram Corporate Limits and Study Area.



The RIF grant was used to construct road improvements along Lakeland Drive adjacent to Copper Sculptures, improving traffic flow and access to this and other businesses along the roadway.

President - Barack Obama
 Vice President - Joe Biden
 Governor - Haley Barbour
 Lt Governor - Phil Bryant

The G-20 Summit met to discuss the ongoing Global Financial Crisis.

Former Mississippi Governor Ray Mabus was appointed to the Secretary of the Navy.

Mobile phone technology improves and the 3G Network was born.

A gallon of gas was \$2.73.



An old warning siren (l) that has been replaced by a new solar-powered siren (r).

2010



Medical Towers of Tuscan Court in Magee. Drainage improvements financed by DIP funds and RIP funds supported the construction of this building.

In 2010, it was evident that CMPDD's seven (7) county area was growing and developing quickly. The District contracted, updated or continued to work on sixteen (16) Comprehensive Plans for cities, towns, or counties in the central Mississippi area. During this time the District was invited to participate in a Regional Community Initiative Program sponsored by the Institute for Economic Advancement (IEA) at the University of Arkansas. This program helped to identify regional strategies and solution that were developed in CMPDD's region and similar regions to address the challenges facing the area. The District approved thirteen (13) loans for \$11,143,321 in its Economic Development Financing Programs. The Southcentral Mississippi Works piloted a Next Job program and was made available to 1,000 area partic-

ipants. This program offered opportunities to utilize computer aided resources to plan, prepare for, and apply for jobs available in the area. These accomplishments were a direct result of CMPDD and its local area governments.

HIGHLIGHTS

- During Fiscal Year 2010, the District began an update of the Long-Range Transportation Plan (LRTP) which will result in production of a 2035 Jackson Urbanized Area Transportation Plan.
- The Jackson Municipal Airport Authority received a \$250,000 grant from the Economic Development Administration (EDA) to study the potential for air cargo in the South-eastern region of the United States.

- The City of Crystal Springs received \$81,142 in Energy Efficiency and Conservation Block Grant funds for energy efficient improvements to City-owned buildings consisting of City Hall, Library, Water Department, Water Treatment Plant, Visitor Center, and Fire Department.
- Southcentral Mississippi Works enrolled over 13,900 persons for assistance, many of whom received some form of occupational training.
- CMPDD serving as the Area Agency on Aging maintained sixty (60) clients with Lifeline Units, which monitored their safety 24-hours a day.
- Roughly 3,248 calls were documented through the Aging and Disability Resource Center (ARDC).
- The Home and Community Based Elderly and Disabled Waiver Program served 1,247 clients during Fiscal Year 2010.



WIN center staff assist job seekers with online job searches.

President - Barack Obama
 Vice President - Joe Biden
 Governor - Haley Barbour
 Lt Governor - Phil Bryant

Patient Protection and Affordable Care Act was passed in Congress.

Mississippi Blues Trail dedicated its 100th marker.

Apple introduced the iPad.

The average cost of a new house was \$232,880.



The Town of Puckett received an EDA grant of \$340,000 for water and sewer system improvements, ensuring that R-Squared Puckett, Inc., the area's largest employer, would be able to remain in the area, increase production, and create new jobs.

2011

President - Barack Obama
Vice President - Joe Biden
Governor - Haley Barbour
Lt Governor - Phil Bryant

The Occupy Wall Street Movement was started.

The Mississippi Freedom Trail was started.

United States Defense tested the first Hypersonic Missile.

The average annual income was \$40,925.



Mobile WIN Job Center.

One major emphasis of Fiscal Year 2011 was the retooling of our Central Mississippi Data Center. This involved our current system being moved to a higher level of sophistication, speed, and capacity by improving our hardware and software capabilities to better serve our member governments. The emphasis was on the use of shared regional resources in order to provide a more cost effective approach to managing information, data, mapping, infrastructure, and other similar types of public and semi-public requirements. The Data Center improvements helped develop year 2035 projections of population, employment, and school enrollment for the long-range transportation planning process in the Jackson Urbanized Area. Subsequently, this transportation plan was unanimously adopted on March 23, 2011.



Central District Transportation Commissioner Dick Hall (2nd from left) at a public hearing at the CMPDD office.

HIGHLIGHTS

- The District assisted the newly formed City of Byram with development of its first Comprehensive Plan and Zoning Ordinance.
- CMPDD through funding from the Economic Development Administration (EDA) assisted the City of Jackson with development of an Economic Development Strategy for the Highway 80 Corridor, stretching from the Pearl River to the City of Clinton.
- The University of Mississippi Medical Center (UMMC) was assisted by CMPDD in preparation and submission of an Economic Development Administration (EDA) grant application for the construction of East University Drive for approximately \$1.5 million.



Training workshop for child care providers.

- The City of Magee received \$100,000 in CDBG Community Self-Help funds to construct a playground with exercise equipment at the City of Magee Sportsplex, an existing City Park.
- The District approved three (3) loans for a total of \$764,000 in its Economic Development Financing Programs during Fiscal Year 2011. These loans leveraged \$1,114,000 in private capital and resulted in creating or retaining 21 jobs.
- Mississippi implemented a new data collection and reporting system for the Workforce Investment Act (WIA) program, which brought significant changes to the way information for workforce development programs were collected and calculated.
- The District obligated a total of \$23,008,083 to Center and Home-Based Providers for childcare services, and a total of 21,484 certificates were issued to eligible children.

2012



Groundbreaking at Boundless Playground in Ridgeland.

The District, in FY 2012, continued to make advancements that vastly improved and upgraded our Geographic Information System (GIS). District GIS staff became more adept in using our additional resources to develop data and mapping tools that enhanced the ability to access local and regional information. Although this past year was not simply about advancing technology, it made this organization better equipped to function and manage problems, as well as opportunities. The 2035 Jackson Urbanized Area Transportation Plan Update was still a very large ongoing project. On the Economic and Community Development front CMPDD's efforts in securing federal and state grants on behalf

of its member governments were recognized by the National Association of Development Organizations (NADO). The District was the recipient of two (2) National Innovation Awards for its assistance with the "Rebirth of Downtown Pelahatchie" and the "City of Jackson's Economic Development Strategy for the Highway 80 Corridor."

HIGHLIGHTS

- The District GIS staff continued to prepare and revise updated base maps of the Cities of Flowood, Madison, Raymond, Richland, Terry, and Madison County areas in connection with the development of Comprehensive Plans for those communities.



The District sets up informative SHIP and SMP displays at health fairs and other senior events.

President - Barack Obama
Vice President - Joe Biden
Governor - Phil Bryant
Lt. Governor - Tate Reeves

The Sandy Hook Elementary School shooting took place and 26 were killed.

The first Mississippi Digital Government Summit was held.

Facebook went public.

A gallon of gas cost \$3.91.



Brandon Municipal Complex.

- The District prepared consolidated JATRAM bus route maps for distribution to the public.
- The City of Canton worked with CMPDD to develop a medical zoning district to provide a central location for the Madison River Oaks Medical Center.
- In an attempt to further assist its local governments, the District selected a traffic sign inventory software for establishing a regional traffic sign retro-reflectivity database.
- Southcentral Mississippi Works fully implemented the nationally recognized Career Readiness Certificate Program.
- Eight (8) wheelchair ramps were built with funds from the National Family Caregiver Support Program which is run by the District.

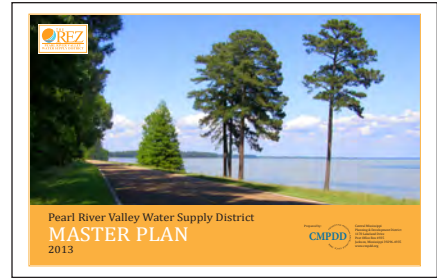
2013



The Campus of the University of Mississippi Medical Center was set to expand again with a new building for the School of Medicine utilizing CDBG funds for site and infrastructure work. The expansion led to the creation of 200 new jobs.

A Federal sequester of funds was in full force during the year 2013, which resulted in automatic cutbacks to a number of Federal programs. Thankfully, these budget reductions produced no tangible loss of productivity or services for the District. Toward the end of the year we even saw the Federal government begin a shutdown process that lasted for several weeks. The Transportation Planning process saw the passage of new legislation with significant funding being made available. CMPDD was awarded the contract to prepare a Master Plan for the Pearl River Valley

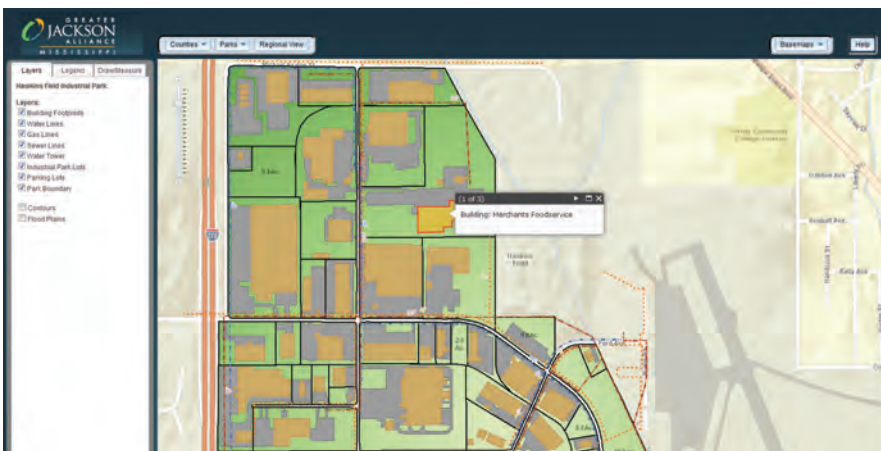
Water Supply District (PRVWSD), which was the first major use of some new GIS technology for comprehensive planning purposes. This plan would no longer only exist as a paper document, but also as a virtual element that could be accessed with a smart phone, tablet, or computer. The significant changes in healthcare caused CMPDD to begin incorporating healthcare management into our local planning efforts, and training healthcare workers became an important part of our workforce development program.



The District completed work on a Master Plan for the Pearl River Valley Water Supply District (PRVWSD).

HIGHLIGHTS

- The City of Magee received approval of an application for the Recreational Trails Program, which was submitted by CMPDD on the city's behalf.
- CMPDD prepared a Facilities Plan for the Rankin County School District.
- The Medicaid Waiver was able to provide a \$60 million cost savings from the 2,007 individuals that the District served in FY 2012-2013.
- The Home-Delivered Meals Program served 307,316 meals this year.
- The District approved six (6) loans for a total of \$3,946,292 in its economic development financing programs. These loans leveraged \$8,020,838 in private capital resulting in creating/retaining 85 jobs.



In February, the District launched an interactive mapping tool for the Greater Jackson Alliance.

President - Barack Obama
 Vice President - Joe Biden
 Governor - Phil Bryant
 Lt. Governor - Tate Reeves

A letter containing the toxic substance Ricin was intercepted before reaching Republican Senator Roger Wicker.

UMC doctors cured a toddler with the HIV virus.

The video application known as Vine took Twitter by storm.

The average price of a new house was \$289,500.

2014



The Home 2 Suites by Hilton, financed in part with a CMDC Loan for \$1,971,000 in 2010, opened in Ridgeland, Mississippi.

FY 2014 was a successful year for all of the divisions of the District. The Metropolitan Planning Organization allocated over \$24 million to 30 high-priority transportation projects. State and Federal agencies determined there was a need establish a comprehensive system for disabled and senior citizens to receive information, obtain referral services, and complete enrollment applications for assistance. CMPDD was one of three Planning and Development Districts in the State chosen to establish a Mississippi Access to Care (MAC) Center to help meet those needs. The first local Master Plan for Healthcare initiated by local governments and economic developers was completed by CMPDD

for Simpson County. The Elderly and Disabled Home and Community-Based Wavier (Medicaid Waiver) program reached a record high average of over 98% of the allotted 2,400 slots for the year. Together these projects brought many groups, organizations, and interests into a common element for the long-term benefit of this region.

HIGHLIGHTS

- CMPDD assisted by applying and receiving approval on twelve (12) Economic and Development Loans in the amount of \$8,532,082. These loans created 127 jobs.

President - Barack Obama
 Vice President - Joe Biden
 Governor - Phil Bryant
 Lt. Governor - Tate Reeves

The Ebola epidemic became a global health crisis.

One of several twisters tore across Mississippi and struck Tupelo and Winston County damaging hundreds of houses and businesses and killed seven (7) people.

The average annual income was \$53,657.

- The District received an Innovation Award from the National Association of Development Organizations (NADO) and a state award from the American Planning Association for the Master Plan of the Pearl River Valley Water Supply District (PRVWSD).
- A contract was awarded from the Mississippi Emergency Management Agency for CMPDD to initiate a regional disaster mitigation plan.
- Southcentral Mississippi Works provided a Senior Transition Program that identified at-risk high school seniors and provided assistance in preparing for life after high school.
- The Home-Delivered Meals program provided 306,845 meals to disabled senior adults who were homebound.



Architect's rendering of Copiah County Medical Center in Hazlehurst.



Town of Wesson Park Master Plan rendering.

2015



Blake Wilson, President & CEO of the Mississippi Economic Council, introduces the Simpson County Health Care Zone Master Plan at Co-Lin College in Mendenhall.

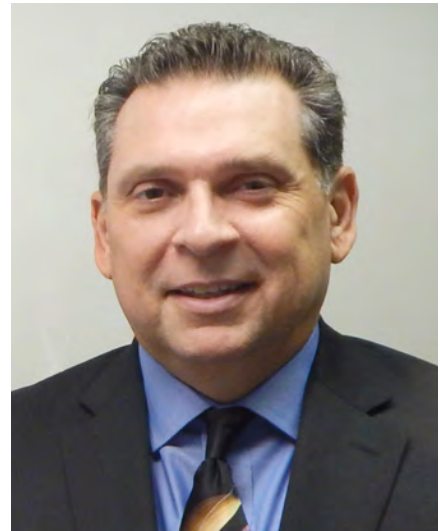
After 45 years of service to CMPDD, which included 42 years as Chief Executive Officer (CEO), Clarke Holmes announced his retirement leading to a change in leadership at CMPDD. While in some organizations a change in leadership signals a new path or approach for correcting deficiencies, that was not the case here at CMPDD. The Board chose to promote from within by selecting Mike Monk. Mr. Monk was an experienced leader and very familiar with the operations and staff. With over twenty-three years of experience working at the District, he was prepared to continue carrying out the ongoing mission of the Board of Directors. The importance of a smooth transition cannot be overlooked by an organization like CMPDD, which has benefited greatly from the institutional knowledge and expertise of its staff.

HIGHLIGHTS

- The Metropolitan Transportation Plan for the Jackson Urbanized Area was completed. The Plan included six (6) volumes for review by the various transportation committees, local governments, and the general public.
- The Data User Group, comprised of various District staff, began efforts to research opportunities, develop policies, and implement a process for digitally archiving files. This would enhance the District's ability to electronically submit internal paperwork to improve our office efficiency.
- The District formally opened the doors to the Mississippi Access to Care (MAC) Center at the WIN Job Center in Canton.
- The District's Medicaid Wavier staff reached 100% of a State approved 2,459 slots comprised of individuals enrolled in the Elderly and Disabled Home and Community-Based Waiver Program.
- Throughout the FY 2015 The State Health Insurance Program (SHIP) and State Medicare Program (SMP) operated by CMPDD conducted fifty-two (52) informative presentations to approximately 610 individuals, and staff attended six (6) Health Fairs that reached an additional 2,578 seniors. Counselors also participated in a live cable television show which reached an estimated 30,000 viewers.



CMPDD CEO Clarke Holmes retired after 45 years of service.



Mike Monk was named CEO by the Board.



Hampton Inn in Richland, funded with a CMDC loan.

President - Barack Obama
 Vice President - Joe Biden
 Governor - Phil Bryant
 Lt. Governor - Tate Reeves

The Federal Reserve had its first hike in more than a decade.
 Apple Pay was introduced.
 A gallon of gas cost \$2.40.

2016

President - Barack Obama
 Vice President - Joe Biden
 Governor - Phil Bryant
 Lt. Governor - Tate Reeves

The Zika Virus epidemic began to cause alarm worldwide.

The Mississippi Grammy Museum was founded in Cleveland.

Tesla Autopilot was introduced.

The average price of a house was \$307,800.



Simpson County Economic Development Foundation was presented with the 2015 Innovation Award from the National Association of Development Organizations, which was received for the development of the Simpson County Health Care Zone Master Plan. Pictured from left: James Smith, Brandon Hubbard, John Rankin, Mike Monk, Donnie Caughman, Gray Ouzts, and David Wade.

There were many notable accomplishments during FY 2016. The 2040 Metropolitan Transportation Plan was formally adopted by the Metropolitan Planning Policy Committee in November, 2015 after almost two (2) years of work. This plan is updated every five (5) years and serves to prioritize Federal transportation funding to local projects in the metropolitan area, which includes much of Hinds, Madison, and Rankin Counties. The District made more progress in 2016 toward becoming a “paperless office” by launching an Employee Portal to provide a one-stop location for CMPDD employees to access all personnel documents and resources. Along that same effort, the District began the process of digitally scanning and archiving files to E-File Cabinet, a computer software program, to make document storage and retrieval more efficient. The staff

involved in the Elderly and Disabled Home and Community-Based Waiver (Medicaid Waiver) program continued to assist an average of 2,400 clients in our seven-county region. These services provided by the District offer a projected cost savings of more than \$55 million per fiscal year in Federal and State tax dollars. Together these three areas of work represent only a fraction of the ways that CMPDD continues to adapt to an ever changing environment requiring innovative approaches to address common issues of the seven-county region.

HIGHLIGHTS

- The District completed a proposed Sign Ordinance for Yazoo City, which is an update of the one originally adopted in 1985.

- The City of Brandon received \$250,091 in Capital Improvements Program (CAP) loan funds to purchase two (2) new fire trucks.
- During the past year the District updated its traffic count GIS viewer with the most recent traffic count data available and traffic count projections for the years 2030 and 2040.
- The District approved five (5) loans for a total of \$2,048,450 in its Economic Development Financing Programs during this fiscal year. Those loans leveraged \$3,159,825 in private capital resulting in total projects of \$5,208,275 and forty three (43) new jobs.
- This year the Home Delivered Meals program the District operates delivered 294,866 meals.



DRA Federal Co-Chairman, Chris Masingill (fifth from left) and Governor Phil Bryant (second from left) announce awards of DRA SEDEP to grant recipients. Included in the picture is Jeff Good (far right), President of Soul City Hospitality and a member of the CMPDD Board of Directors.



From left: Jackson Mayor Tony Yarber, District Director U.S. Small Business Administration Janita R. Stewart, Integrated Management Services CEO John D. Calboun, PhD., and Administrator of the U.S. Small Business Administration Maria Contreras-Sweet.

2017



A NADO award was given for the City of Raymond City Hall and Board Room renovations.

This year brought a change in the Presidency of the United States, and with it a change in political philosophies. A number of cuts to some of our core programs were once again on the cutting block, such as the Economic Development Administration (EDA), the Delta Regional Authority (DRA), and the Community Development Block Grant (CDBG) program to name a few. However, the result was only some minor cuts. Transportation funding for projects in the metropolitan area had a big year with the Metropolitan Planning Organization (MPO) approving the distribution of over \$20 million in Federal Surface Transportation Block Grant funds for twenty-six (26) local govern-

ment projects in the Jackson Metropolitan Area. These funds, coupled with the nearly \$9 million in local matching funds helped with some of the transportation needs in the area. This year the CMPDD continued the process of preparing the full update of the region's Comprehensive Economic Development Strategy (CEDS) for the period 2018-2022. In the workforce division a Sector Strategy Plan was completed to help identify and direct resources to targeted industry sectors in the seventeen (17) county workforce region. The three (3) areas identified in the Sector Strategy Plan were healthcare, manufacturing, and transportation. Training and employment within these sectors are given priority for directing individuals that needed additional skills or jobs.



The UMMC received \$10,000,000 in K-CDBG funds to complete site and utility work for the new School of Medicine building.

HIGHLIGHTS

- The Elderly and Disabled Home and Community-Based Waiver (Medicaid Waiver) staff over the past year, consistently filled 100% of our 2,400 approved slots and maintained a waiting list that has swelled to over 1,800 persons needing assistance.
- The City of Magee adopted a new Comprehensive Plan and Zoning Ordinance prepared by the District.
- During Fiscal Year 2017, District staff developed a Safety Analysis Report to aid local jurisdictions, within the Jackson Urbanized Area (JUA) at improving dangerous road segments.
- This Fiscal Year the City of Vicksburg received a Delta Regional Authority (DRA) award in the amount of \$547,867 to develop a parking area on city owned property that will support a Center of Innovation and key programs that will lead to the creation of new, high paying professional jobs.
- Through the Senior Transportation program contracted by the District 91,244 trips were provided to seniors who no longer drive or have no dependable transportation. These trips are primarily for medical appointments, shopping, or other essential services.

President - Donald Trump
 Vice President - Mike Pence
 Governor - Phil Bryant
 Lt. Governor - Tate Reeves

The Dow Jones hit the 20,000 mark for the first time in history.

Mississippi celebrated its Bicentennial.

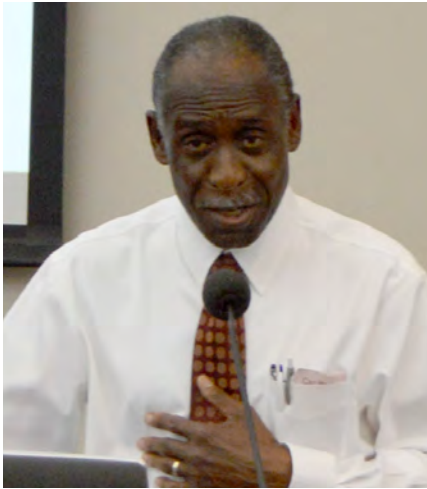
Google headphones that double as a personal translator were launched.

The average annual income was \$59,000.



Through grant application and administration assistance from CMPDD, construction of water and sewer infrastructure to support the new Copley County Medical Center (CCMC), formerly Hardy Wilson Memorial Hospital, in Hazlehurst was completed.

2018



After 48 years of service to the District, Larry Anderson announced his retirement as Director of Human Services.

This year marks the 50th Anniversary for CMPDD. This year, although not fully complete at the time of publication, has been a year of transition and change. It has also been a year of reflection on where we have come over these 50 years. This year has seen the retirement of Larry Anderson, Director of Human Services, who thus far is the longest serving employee of CMPDD with 48 years of service. As a result of Mr. Anderson's retirement, the Human Services Division was reorganized in August and divided into the Aging Division, Case Management (Medicaid Waiver) Division, and Workforce Division. Each of these divisions are led by capable Directors who look forward to continuing our legacy of exception work.

Earlier in the year it was officially announced that Hinds Community College and CMPDD were partnering to establish a new Comprehensive One-Stop Workforce Center at the Metro-center in West Jackson. The new project will redevelop the former McRae's/Belk department store into a center that offers the workforce-related services of the Mississippi Departments of Human Services, Rehabilitation Services, and Employment Security in addition to of-



Workforce Director Mary Powers addresses the crowd at the announcement event for the "Sector Training Plus Comprehensive One-Stop Center", a coordinated effort spearheaded by the workforce division of CMPDD and Hinds Community College.

fering on-site career technical training provided by Hinds Community College. We look forward to this center serving as an economic development driver for the central Mississippi area.

In June, the CMPDD Board of Directors approved proceeding with construction of a new main office building on Centre Pointe Boulevard in Pearl. CMPDD will continue to use the existing building on Lakeland Drive as headquarters for the metro Jackson Medicaid Waiver office, the MAC Center, and other related activities. Also at the June meeting, the CMPDD Board of Director elected Flora Mayor Les Childress to serve as President for a two (2) year term. In addition, the Board approved Raymond Mayor Isla Tullos as Vice-President and Warren County Supervisor William Banks as Secretary-Treasurer.

President - Donald Trump
 Vice President - Mike Pence
 Governor - Phil Bryant
 Lt. Governor - Tate Reeves

Sports betting becomes officially legal in Mississippi.

The average cost of a gallon of gas is \$2.83.

HIGHLIGHTS

- The Jackson Metropolitan Planning Organization (MPO) approved \$1.7 million in funding for metro-area Transportation Alternatives (TA) projects. This funding was made available to the top seven (7) rated projects in the Metropolitan area.
- The Jackson Mississippi Access to Care (MAC) Center was selected by Mississippi Families for Kids and the Mississippi Department of Human Services Division of Aging & Adult Services as the pilot agency for the Help Me Grow Mississippi project.
- CMPDD along with the City of Hazlehurst, the Copiah County Board of Supervisors, the Copiah Water Association, and the Copiah Medical Center received an Innovation Award from the National Association of Development Organizations (NADO) for cooperation in the construction of infrastructure improvements to support the new Copiah County Medical Center in Hazlehurst.
- The District and Regional Census staff from Atlanta worked together to conduct a Local Update of Census Addresses (LUCA) informational workshop. The workshop was held to engage and educate local leaders about the importance of participating in the LUCA program in advance of the 2020 Census.



Mayor Les Childress (President) presents Supervisor Cobie Collins (Immediate Past President) with a plaque to thank him for his service as President.

*Mississippi
Executive Department
Jackson*

EXECUTIVE ORDER NO. 81

WHEREAS, Public Law 90-577, the Intergovernmental Cooperation Act of 1968, and Part IV of U.S. Office of Management and Budget Circular No. A-95, Revised, encourage the States "to exercise leadership in delineating and establishing a system of planning and development districts or regions in each State, which can provide a consistent geographic base for the coordination of Federal, State, and local development programs" in order to "minimize inconsistency among Federal administrative and approval requirements placed on State, regional, and metropolitan development planning activities" and to "eliminate overlap, duplication, and competition in State and local planning activities assisted or required under Federal programs and to encourage the most effective use of State and local resources available for development planning"; and

WHEREAS, Office of Management and Budget Circular No. A-95 requires that "prior to the designation or redesignation (or approval thereof) of any planning and development district or region under any federal program, Federal agency procedures will provide a period of thirty (30) days for the Governor(s) of the State(s) in which the district or region will be located to review the boundaries thereof and comment upon its relationship to planning and development districts or regions established by the State," and "where the State has established such planning and development districts, the boundaries of designated areas will conform to them unless there is clear justification for not doing so"; and

WHEREAS, an increasing number of federal, State, and local assistance programs require a sub-state, multi-jurisdictional structure in order to preserve the eligibility of State and local governments to participate in certain federally-assisted programs and projects; and

WHEREAS, the following sub-state, multi-jurisdictional organizations have been established by local governments and supported by local public revenues under the provisions of Section 2911.3 and Sections 2890.5-01 through 2890.5-08, Mississippi Code of 1942, Recompiled; and

WHEREAS, these multi-county districts have been organized with boundaries which represent natural, social, and economic relationships, and these districts have proved to be effective in the planning, coordination, and administration of public programs and projects;

NOW, THEREFORE, I, John Bell Williams, Governor of the State of Mississippi, pursuant to the authority vested in me, do hereby designate and recognize the following as Mississippi's official Planning and Development Districts for the geographic areas and jurisdictions which they serve:

1. North Delta Planning and Development District, consisting of Coahoma, DeSoto, Panola, Quitman, Tallahatchie, Tate, and Tunica Counties;
2. South Delta Planning and Development District, consisting of Bolivar, Humphreys, Issaquena, Sharkey, Sunflower, and Washington Counties;
3. North Central Mississippi Planning and Development District, consisting of Attala, Carroll, Grenada, Holmes, Leflore, Montgomery, and Yalobusha Counties;
4. Golden Triangle Planning and Development District, consisting of Choctaw, Clay, Lowndes, Noxubee, Oktibbeha, Webster, and Winston Counties;
5. Three Rivers Planning and Development District, consisting of Calhoun, Chickasaw, Itawamba, Lafayette, Lee, Monroe, Pontotoc, and Union Counties;
6. Northeast Mississippi Planning and Development District, consisting of Alcorn, Benton, Marshall, Prentiss, Tippah, and Tishomingo Counties;
7. Central Mississippi Planning and Development District, consisting of Copiah, Hinds, Madison, Rankin, Simpson, Warren, and Yazoo Counties;
8. East Central Mississippi Planning and Development District, consisting of Clarke, Jasper, Kemper, Lauderdale, Leake, Neshoba, Newton, Scott, and Smith Counties;
9. Southern Mississippi Planning and Development District, consisting of Covington, Forrest, George, Greene, Hancock, Harrison, Jackson, Jefferson Davis, Jones, Lamar, Marion, Pearl River, Perry, Stone, and Wayne Counties; and
10. Southwest Mississippi Planning and Development District, consisting of Adams, Amite, Claiborne, Franklin, Jefferson, Lawrence, Lincoln, Pike, Walthall, and Wilkinson Counties.

Pursuant to Part IV of U.S. Office of Management and Budget Circular No. A-95, Revised, and the Intergovernmental Cooperation Act of 1968, all federal agencies are requested to recognize and utilize the boundaries of these districts.

All State agencies are encouraged to recognize and utilize the boundaries of these districts in State and sub-state planning and program development activities.

In those cases in which it is not feasible for a State or federal agency to adhere to the Planning and Development District boundaries, each agency is encouraged to adjust its State and sub-state planning and program development activities to include all of one or more Planning and Development Districts or to include jurisdictions solely within the boundaries of the districts.

The Coordinator of Federal-State Programs, Office of the Governor, shall be the principal agency to advise and consult with the Planning and Development Districts, to assist them in participating in appropriate federal and State programs, and to coordinate the activities of the Planning and Development Districts so that they may constitute a unified and cohesive effort in carrying out overall State planning and development policies and programs.

Copies of this Order shall be provided to the Office of Management and Budget, Executive Office of the President, for the appropriate guidance of federal agencies and to all heads of State agencies. This Order shall become effective July 1, 1971.



IN WITNESS WHEREOF, I have hereunto set my hand and caused the Great Seal of the State of Mississippi to be affixed.

DONE at the City of Jackson, this eleventh day of June, A. D., 1971.

John Bell Williams
GOVERNOR

BY THE GOVERNOR:

Heber Ladner

SECRETARY OF STATE



**Madison County
WIN Job Center**
Bringing People and Jobs Together

PROMOTING REGIONAL DEVELOPMENT
CMPDD
SINCE 1968

Small Town
BIG MAYOR

Best SMLPC
City of Logansport
Harrisonville, MO
Missouri

