



Central Update

APRIL 2021

A Quarterly Publication of
Central Mississippi Planning &
Development District

District Staff Completes Safety Analysis Report

District staff recently completed development of the 2015-2019 Safety Analysis Report for the Jackson Metropolitan Planning Organization’s (MPO’s) planning area. Crash data analyzed by District staff was obtained from the National Highway Traffic Safety Administration (NHTSA) and from data provided to the Mississippi Department of Transportation (MDOT) by the Mississippi Department of Public Safety (MDPS) covering a five-year planning period. The intent of the report is to provide a snapshot of the crash trends affecting users of the transportation system in the Jackson MPO’s planning area. The report not only looks at crash trends for the planning area as a whole, but also includes a breakdown of the crash trends impacting each of the three (3) counties included in the planning area.

Crash statistics contained in the report include: total amount of crashes, total fatalities resulting from automobile crashes, total serious injuries resulting from a crash, and also the total amount of non-motorized fatalities and serious injuries resulting from a crash. Additionally, the report includes a breakdown of various behavior related crash information, most common crash types, and the time of day with the highest percentage of crash occurrences.

The 2015-2019 Safety Analysis Report can be found on the District’s website at bit.ly/32tSY68.

Jackson Metropolitan Planning Organization

SAFETY ANALYSIS 2015-2019 REPORT

2021 Safety Performance Targets

PREPARED BY
CENTRAL MISSISSIPPI PLANNING
AND DEVELOPMENT DISTRICT
1520 Centre Pointe Blvd.
Pearl, MS 39208
Post Office Box 4935
Jackson, MS 39296

ConnectJXN: The City of Jackson’s next Comprehensive Plan



The CMPDD Planners continue to develop a new Comprehensive Plan for the City of Jackson. The Plan has been branded ConnectJXN and will replace FABRIC, which was adopted in the early 2000s. ConnectJXN will visit the City’s past, present, and future as it relates to planning through a study of historic plans, current development patterns and uses, and establish a visual guide for the City’s collective vision. Public engagement through focus group meetings, online and in person surveys, and

open community input is key to the development of ConnectJXN. Input received will influence the creation of Guiding Principles, which will serve as the City’s stated vision for its future. ConnectJXN will feature land use categories that will rely less on dimensions, density, and use. The focus will be more on development characteristics such as street layout and distance from the City’s core. The revised land use categories will be more development, and specifically, redevelopment friendly.

Census Data for Redistricting Delayed Due to Covid-19

Census released the following statement in February 2021, regarding redistricting data.

Redistricting Data Timeline

FEBRUARY 12, 2021

RELEASE NUMBER CB21-CN.14

FEB. 12, 2021 — The U.S. Census Bureau announced today that it will deliver the Public Law 94-171 redistricting data to all states by Sept. 30, 2021. COVID-19-related delays and prioritizing the delivery of the apportionment results delayed the Census Bureau's original plan to deliver the redistricting data to the states by March 31, 2021.

Different from previous censuses, the Census Bureau will deliver the data for all states at once, instead of on a flow basis. This change has been made because of COVID-19-related shifts in data collection and in the data processing schedule and it enables the Census Bureau to deliver complete and accurate redistricting data in a more timely fashion overall for the states.

The redistricting data includes counts of population by race, ethnicity (Hispanic or Latino origin), voting age, housing occupancy status, and group quarters population, all at the census block level. This is the information that states need to redraw or "redistrict" their legislative boundaries.

In preparation for the delivery of redistricting data products, the Census Bureau has been in close coordination with each states' official nonpartisan liaisons to understand the impacts of the delayed delivery on individual states. Since 2019, states have had access to prototype geographic support products and data tabulations from the 2018 Census Test to help them begin to design their redistricting systems. This is one tool states can use to help minimize the impact of schedule delays. In addition, the Census Bureau today completed the release of all states' 2020 Census geographic products needed for redistricting. This will enable states to redistrict promptly upon receipt of their 2020 Census tabulation data.

CMPDD's Medicaid Waiver Program Update

The Elderly & Disabled Medicaid Waiver (E&D Waiver) is a statewide program designed to provide in-home assistance to qualified Medicaid beneficiaries. Beneficiaries must be 21 years of age or older. They must qualify by either SSI Medicaid or 300% of SSI Medicaid. They must require assistance with Activities of Daily Living (ADLs) such as bathing, dressing, eating, ambulation and/or transferring; or Instrumental Activities of Daily Living (IADLs) such as laundry, light housekeeping, errands, and/or assistance on community outings. Registered Nurses and Licensed Social Workers work together as a team to case manage Medicaid eligible beneficiaries.

- In 1984, a joint resolution of Congress was passed, and President Ronald Reagan proclaimed the month of March each year to be *National Professional Social Work Month*. This was done in efforts to encourage and build public support for the profession.
- When fully staffed, CMPDD's Medicaid Waiver program employs 25 Licensed Social Workers. They provide ongoing service, assistance, and advocacy to elderly and/or disabled participants, their families, and caregivers. We recognize and thank them for their dedication and service during National Social Work month.

To remain in compliance with all state and federal guidelines and safety precautions during the Covid-19 pandemic,

Medicaid Waiver Case Managers continue to conduct monthly case management contacts with their clients via telephone, or other virtual/video conference methods. These exceptional methods of contact are utilized under the direction of the Division of Medicaid. Case Managers also conduct face-to-face, in-home visits as necessary while utilizing all Covid-19 safety precautions.

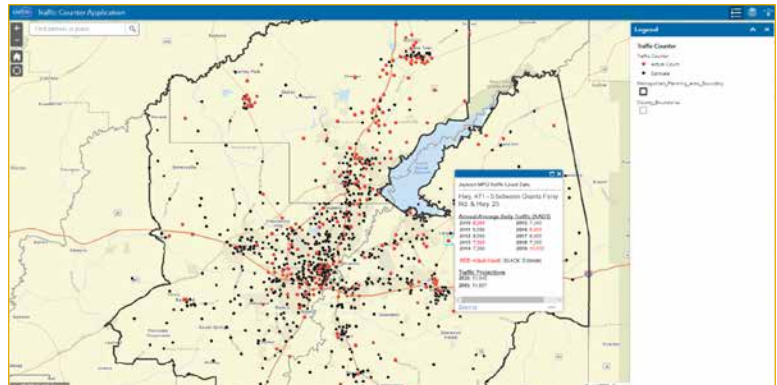
During the months of January, February, and March 2021, Waiver Case Managers served an average of 2,405 clients per month. This includes clients who were approved for Waiver services, pending approval for Waiver services by the Division of Medicaid, or pending physician certification signature approval.

Effective April 5, 2021, Medicaid Waiver Case Managers will return to routine, face-to-face, monthly home visits. All Covid-19 precautions and safety measures will continue to be utilized.

For more information on Elderly & Disabled Waiver services, please contact CMPDD's Mississippi Access to Care (MAC) Center at 1-844-822-4622. Or contact Teresa Burrell-Shoto, RN, Case Management Director at 601-855-5914 or tburrell@cmpdd.org. Individuals who own an agency seeking to become a Medicaid Waiver service provider should contact the Division of Medicaid, Long-Term Care Bureau at 601-359-6141.

District Updates Traffic Count Viewer and Begins Traffic Count Data Collection Process in Rankin County

The District, serving as the Metropolitan Planning Organization (MPO) for the Jackson Urbanized Area, began its annual traffic count data collection process in Rankin County this past January. The District collects traffic count data, in coordination with the Mississippi Department of Transportation (MDOT), on a three-year cyclical basis on all functionally classified roadways in each of the three counties that comprise the MPO's planning area. This area consists of portions of Hinds, Madison, and Rankin counties. This cyclical approach is used to ensure that raw traffic count data collected for each of the counties is no more than three years old.



At the end of the data collection process each year all traffic count data collected by the MPO is submitted to MDOT for analysis. This analysis includes reviewing the submitted data to ensure there are no irregularities or “bad data” and then applying traffic adjustment factors to the raw data to develop Annual Average Daily Traffic (AADT) counts. The traffic adjustment factors used by MDOT to develop AADT counts take into consideration high and low seasonal and daily traffic patterns to arrive at a more representative “annual” traffic count for the selected roadway segment. In the interim years, when traffic count data is not collected, an estimated count for that year is developed using existing traffic count data and additional estimation factors provided to the District by MDOT.

Once MDOT has completed its analysis and interim year estimates have been developed, the updated data for the Jackson MPO Planning Area is made available to the public through our interactive traffic count map on our website. The interactive map includes traffic count data for the most recent ten-year planning period and traffic projections taken from the Jackson MPO's traffic simulation model.

The interactive traffic count map was recently updated by District staff by adding the most recent traffic count data available from 2019. In addition, the updated data includes traffic projections for each roadway segment for the years 2035 and 2045. These projections were taken from the Jackson MPO's traffic simulation model which was used in the development of the 2045 Metropolitan Transportation Plan (MTP). The traffic simulation model estimates traffic conditions over a 25-year planning horizon based on a number of planning variables including: existing traffic volume, population, school enrollment, and land use patterns, just to name a few.

The latest traffic count information can be accessed through the District's website at bit.ly/3mTCVbx . For more information, please contact Scott Burge at (601) 321-2150 or by email at sburge@cmpdd.org .

DRA Announces 2021 Application Cycle

Delta Regional Authority (DRA) has announced the 2021 round of State's Economic Development Assistance Program (SEDAP) investments. SEDAP investments may be used to fund projects for basic public infrastructure, transportation infrastructure, business development (with focus on entrepreneurship), and workforce development. In Central Mississippi, the SEDAP program is only open to public and non-profit entities in the DRA-designated counties. To find out if your project is located within the DRA designated area or for more information about DRA, please visit their website www.dra.gov . This year, the State of Mississippi's DRA allotment is \$2,290,216.42.

Project applications may be completed online at www.dra.gov and submitted to CMPDD beginning March

3rd through June 6th. Local governments, public bodies, and non-profit entities in the Central MS Planning and Development District that are interested in participating in the 2021 DRA Federal Grant Program should contact Mitzi Stubbs at 601.981.1511 to begin the application process.

DRA is a federal-state partnership created by Congress, which serves a 252 county/parish area in an eight-state region. In Mississippi, 47 counties (including all seven (7) CMPDD counties) are eligible for funding under DRA. The purpose of DRA is to remedy severe and chronic economic distress by stimulating economic development partnerships that will have a positive impact on the region's economy.

DRA Technical Assistance

In January, the District completed the 2021 Update of the DRA Allocation Funding Model. Since 2004 the District has served the DRA with technical assistance to update the allocation model with the most recent available data. The allocation model includes a measure of poverty and

unemployment compared to the national rate and factors in poverty rate per capita income for DRA counties in each state. The end result of our effort is a spreadsheet funding model that allows the DRA to allocate certain funding to states with distressed counties.

Jackson MPO Adopts Updated Safety Targets

Federal legislation requires all Metropolitan Planning Organizations (MPOs) and State Departments of Transportation (DOTs) to implement a performance-based transportation planning and programming approach. Performance-based planning allows MPOs and State DOTs to examine data, past and present, and evaluate the performance of their transportation investments against a number of federally required measures in order to track progress toward the achievement of national goals.

Working collectively, MPOs and State DOTs are required to establish performance targets for each applicable measure established by federal legislation. A measure is a statement of what is being assessed, and a target is a quantifiable level of performance or what you hope to achieve within an identified time period. The Jackson MPO is required to set performance targets for multiple performance areas such as safety, pavement conditions, bridge conditions, travel time reliability, freight reliability, and transit assets.

State DOTs and MPOs are required to establish and reassess safety targets annually. Safety targets are established for five (5) safety performance measures based on a five-year rolling average of analyzed data. An MPO has the option to set its own safety targets or support targets set by its respective state DOT. The Jackson MPO first approved safety performance targets in February 2018, by electing to support the state's established targets. On February 10, 2021, the MPO continued that support by voting to approve

updated safety targets set by the state.

For more information about safety targets or the implementation of

performance measures visit the MPO's website, bit.ly/3gdLFpm.

2017-2021 MISSISSIPPI SAFETY TARGETS	
Measure	Target
Number of Fatalities	685.4
Rate of Fatalities per 100 million VMT	1.690
Number of Serious Injuries	2,178.4
Rate of Serious Injuries per 100 million VMT	5.410
Number of Non-Motorized Fatalities and Serious Injuries	181.7

Fatalities						
	2015	2016	2017	2018	2019	5-yr Average
Mississippi	677	687	685	663	643	671
Jackson MPO	71	76	72	64	73	71.2

Fatality Rate per 100 million VMT						
	2015	2016	2017	2018	2019	5-yr Average
Mississippi	1.697	1.690	1.676	1.628	1.565	1.651
Jackson MPO	1.188	1.278	1.339	1.196	1.338	1.268

Serious Injuries						
	2015	2016	2017	2018	2019*	5-yr Average
Mississippi	506	627	540	546	1,618	767.4
Jackson MPO	77	93	69	102	307	129.6

Serious Injury Rate per 100 million VMT						
	2015	2016	2017	2018	2019*	5-yr Average
Mississippi	1.269	1.543	1.321	1.340	3.940	1.883
Jackson MPO	1.289	1.564	1.284	1.905	5.627	2.334

Non-Motorized Fatalities and Serious Injuries						
	2015	2016	2017	2018	2019	5-yr Average
Mississippi	110	124	138	143	187	140.4
Jackson MPO	20	20	17	18	17	18.4

Central Mississippi Mayors Association Meeting

CMPDD hosted a luncheon/meeting for the Central Mississippi Mayors Association (CMMA) on Thursday, January 28, 2021. The CMMA is made up of 34 cities, towns, and villages in the District and the quarterly meetings are normally held at the CMPDD office. The purpose of these CMMA quarterly meetings is to discuss current issues facing the municipalities and exchange ideas of improving each individual area.

The next CMMA meeting is scheduled for Thursday, April 8th at CMPDD's new location.



Back Row: Mayor Chokwe Lumumba, City of Jackson; Mayor Dale Berry, City of Magee; Mayor Pat Sullivan, City of Richland; Mayor Phil Fisher, City of Clinton; Mayor Richard White, City of Byram; Mayor Robert Morris, City of Florence; Mayor Todd Booth, City of Mendenhall; Mayor Jake Windham, City of Pearl.
Front Row: Mayor Lekisha Hogan, Village of Eden; Mayor Kenneth Broom, Town of Utica; Mayor Sally Garland, City of Crystal Springs; Mayor Les Childress, Town of Flora; Mayor Russ Espiritu, Town of Puckett.

Hazard Mitigation

CMPDD is currently working to update Hazard Mitigation Plans for Brandon, Yazoo County (including Bentonia, Eden, and Satartia), Flora, Richland, Florence, Clinton, Hazlehurst, Vicksburg and Rankin County. These plans will include the most recent available data related to recent disaster events, an update of critical facilities, and an update of the jurisdictions' mitigation actions. Also included, is a comprehensive risk assessment that determines the threat level of each individual hazard as it relates to the jurisdiction. The Disaster Mitigation Act of 2000 requires local jurisdictions to maintain an approved Hazard Mitigation Plan in order to maintain grant eligibility for certain pre- and post-disaster grant programs available through the Mississippi Emergency Management Agency (MEMA) and the Federal Emergency Management Agency (FEMA). These plans are required to be reviewed and updated on a five-year cycle to account for any increase in risk or notable changes to the locality. All Hazard Mitigation Plans currently being developed by CMPDD will include a section related to Public Health Emergencies, in response to the ongoing COVID-19 pandemic. Each plan's mitigation strategy will now include actions that directly improve a jurisdiction's resilience in the event of a Public Health Emergency. These actions are developed in collaboration with the mitigation councils and are specifically tailored to the individual jurisdiction. The District 5 Hazard Mitigation Plan has completed the State and Federal review process and is currently awaiting adoption. Copiah County (including Georgetown and Wesson) and the City of Ridgeland's Hazard Mitigation Plans have each passed State and Federal review and currently await adoption. For more information concerning the mitigation planning process underway or to find out how you can be involved in the process contact Gray Ouzts at 601.981.1511, ext. 249 or visit the District's mitigation website page www.cmpdd.org/mitigation-planning/.

CMPDD Receives MDA approval of 2020 CDBG Public Facilities Applications

The CDBG Public Facility Program provides grant funds to local units of government for a variety of public improvement projects (e.g., water or sewer facilities, storm drainage, public buildings, street reconstruction, etc.) that benefit low to moderate income families and areas. Special priority is given to water and sanitary sewer projects that eliminate existing health and safety hazards.

MDA recently announced the 2020 CDBG PF projects that were approved for funding. The District received approval of three (3) CDBG PF applications. Listed below are the applications that were approved for funding:

<u>Community Name</u>	<u>Project Description</u>	<u>CDBG Funds</u>	<u>Matching Funds</u>
Village of Beauregard	Unserved Sewer Extensions	\$449,939	N/A
City of Brandon	Sewer System Improvements	\$600,000	\$600,000
City of Hazlehurst	Water System Improvements	\$600,000	\$108,000

Understanding Unemployment and Workforce Participation

Every month, in accordance with US Department of Labor requirements, states calculate and issue unemployment rates. Unemployment rates are calculated by dividing the number of unemployed individuals by the number of individuals in the labor force, which consists of all employed and unemployed people. The ratio is then expressed as a percentage. As of January 2021, Mississippi's unemployment rate was 6.2%, which is below the national average unemployment rate of 6.8%. The state's rate has been steadily declining as Mississippi, like many other states, rebounds from the effects of the COVID-19 crisis.

We assume that a decrease in the unemployment rate is a good thing and that it indicates people are going back to work; however, there is another workforce statistic that should be taken into consideration as well. That statistic is the Workforce Participation Rate. The key difference between the unemployment rate and the workforce participation rate is that the participation rate measures the percentage of individuals who are in the labor force, while the unemployment rate measures the percentage within the labor force that is currently without a job.

The workforce participation rate is the percentage of the civilian non-institutionalized population 16 years of age and older that is working or actively looking for work. It is an important labor market measurement because it represents the relative amount of labor resources available in the state. As of February 2021, the nation's workforce participation rate was 61.4%, while Mississippi's rate was 56%. Only West Virginia has a workforce participation rate lower than Mississippi. This rate indicates that the state's economy is not performing as well as one might think by looking at the unemployment rate.



A state's labor force can change for many reasons such as people leaving the workforce due to aging, retirement, changes in job opportunities, and moving out of state. Another reason for a lower workforce participation rate is that some individuals have simply become discouraged and have stopped actively looking for work, and this is an area that can be corrected.

As the administrative entity for the Southcentral Mississippi Works Workforce Development Area, CMPDD continually strives to ensure that job training is made available to those who wish to enhance their job skills and thereby allow them to join the workforce in job opportunities that provide them with a self-sufficient wage. Through our efforts and those of the other three workforce areas in the state, our citizens can reach goals they may not be able to reach without our assistance.

City Clerks Meeting

CMPDD hosted a luncheon/meeting for the City Clerks in the Central Mississippi Planning and Development District on January 21, 2021. The Clerks shared best practices with each other and discussed issues that directly affect their jobs. We are very happy to facilitate meetings such as this because increased efficiency greatly benefits our participating governments and those they represent.

The next City Clerks meeting is scheduled for Thursday, April 22nd at CMPDD's new location.



City Clerks - Angela Richburg, City of Byram; Angela Harris, City of Jackson; Pam Coward, Town of Braxton; April Dunlap, Town of Flora; Angela Hester, Town of Wesson; Kim Vaughn, City of Crystal Springs

CMD C BULLETIN

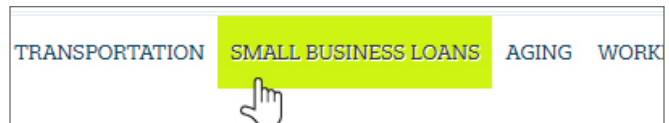
Central Mississippi Development Company (CMDC) is a commercial lender certified by the U. S. Small Business Administration and works with local banks and other financial institutions in providing debt capital for small businesses. CMDC provides fixed rate low interest long term financing for small businesses and saves thousands of dollars in debt service on fixed assets. This type financing removes the problem of variable rate financing on long term assets. Many economic forecasters are certain that interest rates will rise. These predictable interest rate increases will not negatively impact the cash flow of those small businesses that have fixed rate low interest loans through the U. S. Small Business Administration's (SBA) 504 Loan Program. The most recent fixed interest rates under this loan program were:

SBA 504 Loan Program Interest Rates

<u>TERM (YEARS)</u>	<u>INTEREST RATE</u>
10 (March 2021)	2.70%
20 (March 2021)	3.00%
25 (March 2021)	3.04%

Also, CMDC serves as the Loan Review Board for the Central Mississippi Planning and Development District's (CMPDD's) Minority Business Enterprise Loan Program (MBELP). The MBELP receives its funding from the Mississippi Development Authority (MDA). The interest rate on loans made through this program to a minority owned business is currently 2.25% per annum. The term of a loan can be up to 15 years depending on the use of the loan proceeds (commercial buildings, equipment, inventory, working capital, etc.)

Councilman De'Keither Stamps invites bankers, commercial loan officers, business owners, real estate developers, and general contractors, to contact Dwayne Perkins at 981-1625, or visit our website at cmpdd.org. See the tab labeled "Small Business Loans."



CMPDD to Prepare New Comprehensive Plan and Zoning Ordinance for Rankin County



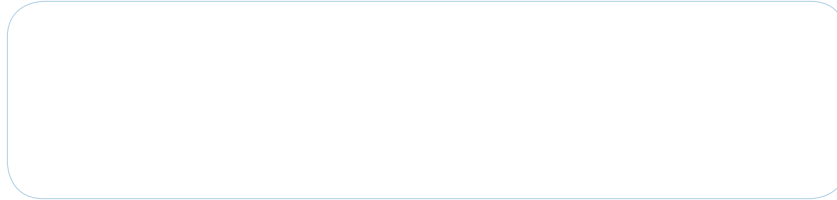
The Rankin County Board of Supervisors recently contracted with CMPDD to develop a new Comprehensive Plan and Zoning Ordinance for the County. As one of the top growth counties in Mississippi, and in anticipation of the release of new 2020 Census counts, Rankin leaders recognize the importance of maintaining an up-to-date planning

process to help them guide the growth and changes in land use in the County.

CMPDD has a long record of assisting Rankin County in their planning efforts. In 2003 the District began the development of the County's first Comprehensive Plan and Zoning Ordinance. The result was the 2004 adoption of a Comprehensive Plan and Zoning Ordinance that was widely

embraced by citizens as well as those who do business in Rankin County. The existence of zoning regulations in Rankin County provided for a stable environment for those looking to build a home and raise a family and for those considering a major commitment such as moving their business or industry into the County.

Since the adoption of the first Rankin County Comprehensive Plan and Zoning Ordinance in 2004, there have been two updates of the Comprehensive Plan (2010 and 2017) and several revisions to the Zoning Ordinance such as the addition of the Reservoir Community District. The Rankin County Land Use Plan was also incorporated into the Pearl River Valley Water Supply District (PRVWSD) Master Plan (2013) in an effort to better facilitate land use planning and controls on properties under both jurisdictions.



If the name and address of the recipient needs to be updated, please contact our office at 601-981-1511.

CDBG Administration

The Town of Wesson has a newly renovated public library that can be utilized by all citizens within the community. CDBG funds were used to make Americans with Disabilities Act (ADA) improvements to the Town's public library and construction was complete in March 2021. Previously, there were obstacles that limited people with disabilities from having access to the library. There were not any designated parking spaces or railings to assist disabled people to get out of the car and onto the sidewalk. There were also issues inside of the library that included an aged floor, tall bookshelves, poor lighting, and a single restroom that was not ADA compliant. The Town of Wesson was able to make these improvements with a CDBG Public Facilities grant in the amount of \$443,801.00.

The Town of Bentonia also recently closed out their

CDBG project to improve the Town's sewer system. In 2019, the Town received a CDBG grant in the amount of \$450,000.00 to update an old sewer system that caused sewage to back-up in homes and other serious issues within the community. In the past, the Town was unable to repair the existing pumps. Thankfully, Bentonia received CDBG funds to make the necessary improvements.

CMPDD is also providing CDBG administration services to the Town of D'Lo and the City of Pearl. Administrative services include professional services procurement, environmental clearance, compliance with all HUD and MDA regulations, financial management and oversight including submission of requests for cash, reporting compliance, and closeout assistance.

Stay Connected Project

Recently CMPDD received supplemental funding from Mississippi Department of Human Services/ Division of Aging and Adult Services due to the Coronavirus pandemic. The purpose of this funding was to allow Mississippi Access to Care (MAC) Centers the opportunity to utilize assistive technology as a supplementary source of communication.

The Jackson MAC Center has initiated the "Stay Connected Project" to address the concern of senior isolation. Long term care facilities located in the Central and Southwest Mississippi regions were provided the opportunity



to participate in the Project and receive Samsung Tablets for residents. The Samsung Tablets will be utilized to provide virtual solutions for residents to communicate with family and friends. For more information contact Dr. Chelsea B. Crittle, Aging Program Director at 601-981-1516.

CMPDD BOARD OF DIRECTORS

Isla Tullos,
President

William Banks,
Vice-President

Sally Garland,
Secretary-Treasurer

Les Childress,
Immediate Past President

Michael Monk,
Chief Executive Officer

Volume 36

Number 2