



Central Update

OCTOBER 2023

A Quarterly Publication of
Central Mississippi Planning &
Development District

CMPDD Expands the Career Coaching Program

In partnership with Accelerate MS, CMPDD's South Central Mississippi Works grew its efforts to connect high school students with transformative, high-paying careers through the Career Coaching program. Career Coaches were deployed to 34 high schools in 16 school districts throughout the workforce area. School districts include:

1. Madison County School District
2. Canton School District
3. Rankin County School District
4. Pearl Public Schools
5. Hinds County School District
6. Jackson Public Schools
7. Vicksburg-Warren County School District
8. Simpson County School District
9. Copiah County School District
10. Jefferson County School District
11. Adams County School District
12. Franklin County School District
13. Wilkinson County School District
14. Amite County School District
15. Pike County School District
16. Walthall County School District

The Career Coaching program is designed to help students explore, prepare, and connect to Mississippi's most in-demand careers.

Coaches help students understand the needs of industry and training opportunities at community colleges and universities. Throughout the first two (2) months of school, coaches have had over 2,100 conversations with individual students to develop personalized training plans.



CMPDD Career Coach Manager, Angie Miles, helped kick-off the school year at Jackson Public Schools with seven (7) Career Coaches. A Career Coach will be at each JPS high school during the 2023-2024 school year.



CMPDD Career Coach Manager, Valerie Barton, and Career Coaches toured the Wal-Mart Distribution Center in Brookhaven, MS.



Richland High School Career Coach Shameka Anderson took a group of students to the Realtor Career Day event hosted by the Central Mississippi Realtors. Students had the opportunity to learn from loan officers, home inspectors, real estate attorneys, realtors, and brokers. They also learned about the education, training, and licensure requirements for each related career.



Safe Streets and Roads for All Action Plan Grant

SS4A Regional Safety Action Plan Development

In September, the Central Mississippi Planning & Development District (CMPDD) started the comprehensive planning process to develop a Safe Streets and Roads for All (SS4A) Safety Action Plan for CMPDD's seven-county region. Understanding and prioritizing the safety needs of people in Copiah, Hinds, Madison, Rankin, Simpson, Warren, and Yazoo counties is the first step in delivering a plan that provides maximum benefit to the traveling public regardless of the method of travel. The safety action plan will examine the needs and concerns of all users including motorists, pedestrians, bicyclists, and public transit riders to identify solutions aimed at reducing the number of fatalities and serious injuries in central Mississippi.

The safety action plan will be developed through a collaborative effort and will include a number of community outreach campaigns that involve the public and community stakeholders throughout the process to collect diverse input and ensure equitable representation across CMPDD's seven-county region.



The SS4A Safety Action Plan is funded by a grant from the US Department of Transportation and the Federal Highway Administration. It is expected to be completed by the Summer of 2024 and will allow local jurisdictions to apply for implementation of capital construction grant funds through the SS4A discretionary grant program. For more information, please contact Lesley Callender at 601.321.2152.

Input Sought for Statewide Comprehensive Outdoor Recreation Plan

The Mississippi Department of Wildlife, Fisheries, and Parks is charged with maintaining a 5-year plan that guides recreational development in the State of Mississippi, namely the Statewide Comprehensive Outdoor Recreation Plan (SCORP). The SCORP is not focused solely on state owned facilities, but also city, county, and federally owned parks and recreational facilities.

Local governments should take interest in the SCORP as a source of potential grant funding for parks and recreational facilities funded through the Land and Water Conservation Fund. CMPDD Planners are participating in the update as

Task Force Committee members.

You have an opportunity to participate in the 5-year update that is currently underway by responding to surveys or attending public meetings. Recreational facility providers can complete a survey here: www.surveymonkey.com/r/SCORP-provider. Residents and facility users can complete a survey here: www.surveymonkey.com/r/SCORP2025.

Information on public meetings can be found on the SCORP website at www.mississippiincorp.com/.

Hazard Mitigation Planning

The Disaster Mitigation Act of 2000 requires local jurisdictions to maintain an approved Hazard Mitigation Plan in order to maintain grant eligibility for certain pre- and post-disaster grant programs available through the Mississippi Emergency Management Agency (MEMA) and the Federal Emergency Management Agency (FEMA). Recent spring and early summer severe thunderstorms have brought high winds, large diameter hail, frequent lightning, and tornadoes to Central Mississippi, which highlight the need for mitigation planning. All jurisdictions are reminded to review their adopted Hazard Mitigation Plans annually to ensure accuracy with current visions and needs and to account for any development or population changes that might have occurred that could increase or decrease a community's risk to a particular hazard.

Predicting where the next disaster will occur, and how severe its impact will be on a community is difficult. Given the right conditions natural disasters, such as tornadoes and flash floods, can occur at anytime and anyplace. Their human and financial consequences can be significant. Mitigation Planning is intended to assist communities in determining their risks to natural disasters and developing an action plan to address the known risks by lessening the impact of natural disasters when they do take place. Currently, CMPDD Planners are assisting the Town of Terry and Mississippi Valley State University with 5-year updates to their Hazard Mitigation Plans. CMPDD Planners remain available to assist local governments with their annual reviews.



CMMA and City Clerks Meetings

Both the Central Mississippi Mayors Association (CMMA) and the City Clerks association met in September. These groups shared best practices with each other and discussed issues that directly affect their jobs and municipalities. The Clerks welcomed Mississippi Department of Archives and History staff to discuss programs for municipalities.

The Mayors discussed priorities for the next legislative session as well as the CMMA Scholarship. Applications are now being considered for 2024 applicants. The CMMA Scholarship is for students from Copiah, Hinds, Madison, Rankin, Simpson, Warren, or Yazoo counties who will be continuing their education within the state. Applicants with documented community service hours will be prioritized. The scholarship can cover the cost of tuition, textbooks, or room and board. For more information regarding the scholarship, please visit cmpdd.org/cmma.

Aging Advisory Committee Members Named

The District's Board of Directors, at its September Board meeting, named individuals to serve on its Aging Advisory Committee for a term of two years, beginning September 2023 through September 2025. This Committee will serve in an advisory capacity to the aging staff as they work towards the development of a comprehensive system of services for the older population in the seven-county area. The following individuals were named to represent the individual county/area as follows:

- Hinds:** Dr. Laurie Lawson
Terre Male
- Rankin:** Gus Black
Mary Jane McDaniel
- Warren:** Bobbie Heads
Marian Banks

- Madison:** D.I. Smith
Paul Tankersley
- Simpson:** Ollie Hoover
Sandra Jones
- City of Jackson:** Denise Drake
Frank Figgers
Charlotte Reeves

The remaining representatives for the City of Jackson, Copiah County, and Yazoo County will be brought before the Board in December for approval.

Meetings will occur quarterly, and the first meeting is scheduled for November 14, 2023, at the offices of CMPDD. For more information, contact Chelsea Crittle, at 601.321.2147.

Planning Updates

CMPDD has contracted with Crystal Springs to update the City’s Comprehensive Plan and Zoning Ordinance. The City’s first Comprehensive Plan and Zoning Ordinance were adopted in 1998. An update to the Comprehensive Plan was completed in 2009. The new Comprehensive Plan will be a web-based plan that incorporates interactive mapping that is presented in a Story Map format that is directly linked to the Zoning Ordinance. The interactive mapping tools will allow for greater exploration of the Plan and will be easily accessed from the City’s website.

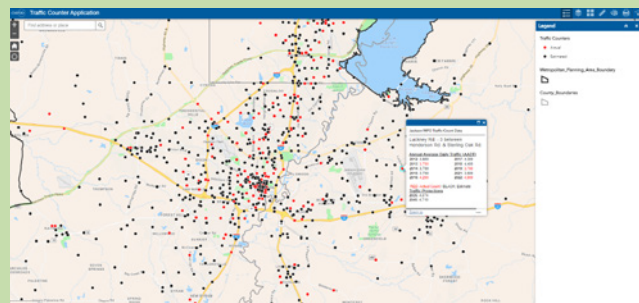
CMPDD has also contracted with the City of Richland to update the City’s Comprehensive Plan. Richland’s current Comprehensive Plan was adopted in 2019. The updated Plan will incorporate the many changes occurring in this rapidly growing area of Rankin County.

CMPDD Data Analysis Services

If your organization needs services related to demographic research, GIS solutions, grant assistance, and/or comprehensive planning please visit our website at cmpdd.org to learn more about our capabilities. We will be glad to discuss your project and provide a quote for our services.

Traffic Count Viewer Updated

CMPDD staff, in cooperation with the Mississippi Department of Transportation (MDOT), collect traffic count data on all functionally classified roadways in the Jackson Urbanized Area (JUA), which includes portions of Hinds, Madison and Rankin Counties on a three-year cyclical basis. At the end of each year all traffic count data collected by CMPDD is submitted to the MDOT for analysis. This analysis includes reviewing the submitted data to ensure there are no irregularities or “bad data” and then applying traffic adjustment factors to the raw data to develop Annual Average Daily Traffic (AADT) counts. The traffic adjustment factors used by the MDOT to develop AADT counts take into consideration high and low daily and seasonal traffic patterns to arrive at a more representative “annual” traffic count for each traffic count location. In the interim years, when traffic count data is not collected for select locations, an estimated count for those locations is developed using existing historical traffic count data and applying estimation factors. Once the MDOT has completed its analysis and developed interim year estimates the updated data for the Jackson MPO Planning Area is provided to CMPDD and made publicly available through



our traffic count viewer.

In August CMPDD updated the traffic count viewer to include all traffic count data for 2022. The traffic count viewer includes not only data for 2021, but also data from 2012-2019 and 2021. As can be seen on the viewer, traffic count data for 2020 is not included. Due to substantial irregularities in traffic patterns resulting from the COVID-19 shutdown in 2020 this data was excluded.

The traffic count viewer can be accessed through CMPDD’s website at cmpdd.org/traffic-counting/. If you have any questions concerning the traffic count viewer, please contact Scott Burge at 601.321.2150 or by email at sburge@cmpdd.org.

Grants Update

CMPDD staff continue to work with municipalities on applications for Community Infrastructure Funds (CIF) from Delta Regional Authority (DRA). The CIF program aims to target federal resources toward communities in the Mississippi River Delta and Alabama Black Belt regions. CIF provides direct investment into community-based and regional projects that address the DRA’s congressionally mandated infrastructure funding categories

(Basic Public Infrastructure and Transportation Infrastructure) and flood control projects. This year, CMPDD has already submitted applications for municipalities throughout the district and continue to work assisting more. This grant is submitted on a rolling cycle, meaning applications are received year-round.

Recently, CMPDD closed out two (2) Community Development Block Group grants for the Town of Utica and the City

of Hazlehurst. The Town of Utica utilized \$375,484.60 to improve the Town’s sewer system and the City of Hazlehurst completed a \$716,656 improvement project for one of the City’s elevated water tanks and water system.

If you are interested in a grant for an infrastructure project or a CDBG grant, please email Amy E. Smith at aesmith@cmpdd.org or call 601.981.1511.

CMDC BULLETIN

Representative De'Keither Stamps, President of the Central Mississippi Development Company, Inc. (CMDC), announced the approval of a new loan.



Hotel Whiskey, Pass Christian, MS

The approval was for The Hotel Whiskey Pascagoula, a 17-room boutique hotel and restaurant. The loan was for \$1,118,115 of a \$3,194,614 project under the United States Small Business Administration's 504 Loan Program. The proceeds of this loan will finance the purchase of land, furniture and fixtures, and the construction of a hotel in Pascagoula, Mississippi. This hotel will serve as the borrowers' second location and will create five (5) new jobs in the private sector.

CMDC is a commercial lender certified by the U. S. Small Business Administration and works with local banks and other financial institutions in providing debt capital for small businesses. CMDC provides fixed rate low interest long term financing for small businesses and saves thousands of dollars in debt service on fixed assets. This type of financing

removes the problem of variable rate financing on long-term assets. Many economic forecasters are certain that interest rates will rise. These predictable interest rate increases will not negatively impact the cash flow of those small businesses that have fixed rate low interest loans through the U. S. Small Business Administration's (SBA) 504 Loan Program. The most recent fixed interest rates under this loan program were:

SBA 504 Loan Program Interest Rates

<u>TERM (YEARS)</u>	<u>INTEREST RATE</u>
10 (June 2023)	7.06%
20 (June 2023)	6.86%
25 (June 2023)	6.81%

Also, CMDC serves as the Loan Review Board for the Central Mississippi Planning and Development District's (CMPDD's) Minority Business Enterprise Loan Program (MBELP). The MBELP receives its funding from the Mississippi Development Authority (MDA). The interest rate on loans made through this program to a minority owned business is currently 6.50% per annum. The term of a loan can be up to 15 years depending on the use of the loan proceeds (commercial buildings, equipment, inventory, working capital, etc.)

Representative De'Keither Stamps invites bankers, commercial loan officers, business owners, real estate developers, and general contractors to contact Dwayne Perkins at 601.981.1625, or visit our website at cmpdd.org. See the tab labeled "Small Business Loans."

Grants Workshop

In preparation for the 2024 grant cycle, CMPDD's Community and Economic Development staff hosted a workshop on grant opportunities for local governments in the region. Officials from all areas of CMPDD's seven-county district attended. During the workshop, they received information regarding funding opportunities for eligible projects. If you are interested in obtaining any information regarding grants, please contact our Community and Economic Development staff at 601.981.1511.



If the name and address of the recipient needs to be updated, please contact our office at 601-981-1511.

CMPDD's Medicaid Waiver Program Update

The Elderly & Disabled Medicaid Waiver (E&D Waiver) is a statewide program designed to provide in-home assistance to qualified Medicaid beneficiaries. Beneficiaries must be 21 years of age or older. They must qualify by either SSI Medicaid or 300% of SSI Medicaid. They must require assistance with activities of daily living (ADLs) such as bathing, dressing, eating, ambulation and/or transferring; or instrumental activities of daily living (IADLs) such as laundry, light housekeeping, errands, and/or assistance on community outings. Registered Nurses (RN) and Licensed Social Workers (LSW) work together as a team to assess the referred client, submit for approval of services to the Division of Medicaid (DOM), then manage and coordinate the approved services for all clients.

With the renewal of the 1915(c) Elderly & Disabled Waiver, two (2) new services were added and have become a part of all available services under the E&D Waiver. Those new services are Medication Management and Environmental Safety Services.

- Medication Management services would be available for persons to receive consultations and follow up visits with a licensed pharmacist to maximize adherence to their therapeutic regimen.

- Environmental Safety Services would be available for qualified individuals that includes minor home repair and maintenance, heavy household cleaning, non-routine garbage disposal, yard maintenance, or pest control services.

CMPDD's Waiver and Workforce Investment divisions continue to partner to employ social workers who have received their bachelor's degree in social work and are seeking to work as a Licensed Social Worker Case Manager. The salary-based 12-week program provides dedicated study time, information, preparation for taking the licensure exam, and supervised observation of case management home visits. Trainees also receive the traditional benefits of insurance coverage, leave time accrual, and other employee benefits. At the end of the 12-week training period, upon passing the licensure exam, the trainee will automatically transition to a permanent LSW Case Manager position.

On August 1, 2023, our third SW Trainee, Alishia Holiday, began employment. Ms. Holiday has begun her 12-week training period and dedicated study time in preparation for taking the licensure exam.

The Division of Medicaid's Appendix K (Public Health Emergency

Amendment to the Waiver) continues to be in effect for six (6) months following the end of the federally declared PHE on May 11, 2023. Appendix K flexibilities are set to end November 2023.

*Individuals who own an agency and are seeking to become a Medicaid Waiver service provider should contact the Division of Medicaid, Long-Term Care Bureau at 601.359.6141.

For more information on Elderly & Disabled Waiver services, please contact CMPDD's Mississippi Access to Care (MAC) Center at 1.844.822.4622. Or contact Teresa Burrell-Shoto, RN, Case Management Director at 601.855.5914 or tburrell@cmpdd.org.

CMPDD BOARD OF DIRECTORS

William Banks,
President

Sally Garland,
Vice-President

Les Childress,
Secretary-Treasurer

Isla Tullos,
Immediate Past President

Michael Monk,
Chief Executive Officer

Volume 38

Number 3