

JANUARY 2024

Central Update

A Quarterly Publication of
Central Mississippi Planning &
Development District

CMPDD is Accepting Grant Applications for \$28 Million Available Through the Metropolitan Planning Organization (MPO) for Surface Transportation Improvements

In early January, the Central MS Planning and Development District (CMPDD) announced the availability of \$28 million in Federal Surface Transportation Block Grant (STBG) funds through the MPO for transportation improvements in the Jackson Urbanized Area which includes portions of Hinds, Madison, and Rankin Counties.

Applications must be received by CMPDD by February 23, 2024, and must include proposed projects located on an existing or proposed street functionally classified as an urban collector, minor arterial, or principal arterial roadway. Applications will be reviewed and graded based upon the evaluation criteria for each application category detailed in the MPO's Project Submittal Guidelines. Updates to Project Submittal Guidelines were approved by the Metropolitan Planning Policy Committee in November 2023.

Local jurisdictions with applications selected for funding can receive up to 80% in federal MPO grant funds for construction costs. Local jurisdictions are required to provide a minimum 20% in local matching funds. The only exception to the 20% local match requirement is for eligible safety improvements. Some safety projects may be eligible for 100% federal grant funding.

The MPO's last call for projects took place in 2021 when the MPO awarded \$25.4 million to 33 projects across the metro area. The MPO anticipates announcing funding awards for projects ranked the highest during the evaluation process for the latest call for projects in May 2024.

For more information about the MPO planning process or the call for projects please visit www.cmpdd.org.

EDA Awarded Recompete Pilot Program Award

The U.S. Department of Commerce's Economic Development Administration (EDA), recently announced that the Mississippi Department of Employment Security (MDES), in partnership with Accelerate MS and South Central Mississippi Workforce Area at CMPDD, has been awarded a Strategy Development Grant (SDG) to fund local planning activities related to increasing the labor force participation of 25-54 year olds not currently in the labor force.

The grant, which totaled \$499,470, is part of the Recompete Pilot Program, a federal program to create renewed job opportunities in economically

distressed communities. Through this funding, Mississippi will have the opportunity to apply for additional funding next year to support a wide range of training and support activities across the identified regions.

"This funding will allow partners to dedicate time and effort to digging deep to determine what training and support efforts will serve the community members best to enable them to be competitive for the good jobs available," said Dr. Courtney Taylor, Deputy Director for Strategy & Programs at Accelerate MS.

Over an 18-month period, the Mississippi Recompete Strategy will address regional prime-age



employment gaps by identifying and evaluating barriers to labor force participation and occupational skills attainment in the Jackson, Hattiesburg, and the Delta regions. These regions were selected due to the inordinately high unemployment of the state's prime-age potential workforce.

Robin Parker, Workforce Director at CMPDD, said "The Strategy Development Grant provides an opportunity to support citizens in the metro area by connecting underserved populations with high-quality careers."

DRA Allocation Model

In December of 2023, CMPDD completed work required to update the DRA Allocation Model. This is an annual project that involves determining if a DRA county is distressed or not by measuring county data such as unemployment rate and per capita income against the national

averages. CMPDD gathers the economic indicators for each county in the DRA territory and applies the information to the DRA funding allocation model so that it is updated for the coming year. The model is used as a guide for distributing funds to individual DRA counties based

on how they rank in the analysis. The variables include poverty rate, population in poverty, unemployment rate and personal income rates. The project for 2024 will also include looking at smaller geographies than counties to identify distressed areas.

Empowering Success: CMPDD's Innovative Approach to Workforce Development in the Medicaid Waiver Program

In a remarkable journey of professional growth, Alishia Holiday has emerged as a Licensed Social Worker Case Manager within the CMPDD Medicaid Waiver Division, a testament to her unwavering dedication and the transformative Medicaid Trainee Program. Armed with a Bachelor of Science in Social Work from Belhaven University, Alishia set her sights on the next pivotal milestone—conquering the Licensed Social Work (LSW) exam administered by the Association of Social Work Boards (ASWB). This clinical exam, renowned for its rigor, stands as a critical employment requirement for Social Workers in the Medicaid division.

Reflecting on her motivation, Alishia shared, “I have always had a desire to help people, particularly in the elderly population. Beginning in home health, I sought to deepen my impact, and social work emerged as the ideal pathway. My life has been dedicated to serving others.”

Teresa Shoto, Director of Medicaid Waiver at CMPDD, highlighted the essential role of licensure in social work, emphasizing, “To practice as a licensed social worker, one must possess a degree in social work and successfully pass the licensure exam. While some social workers can function without a license, our position necessitates this crucial qualification.”

Recognizing the LSW exam as a pivotal gateway to such roles, Mike Monk, CEO of CMPDD, catalyzed a collaboration between the Workforce Division and the Medicaid Waiver Division. Their shared objective was to support social workers who held the necessary degree but had not yet completed the licensure exam.

Robin Parker, the Director of Workforce at CMPDD, elaborated on their strategic approach, “The workforce division oversees federal WIOA dollars dedicated to training individuals in the workforce. One training program we offer is the On-the-Job Training program (OJT). OJT is designed to provide individuals with hands-on work experience in a specific occupation or industry. The primary goal of OJT is to enhance the participant’s skills and employability, making them better prepared for long-term success in the workforce.” Over a 12 week period, Alishia engaged in comprehensive exam preparation and had the unique opportunity to shadow teams of licensed social workers and nurses in real-world patient care scenarios.

Alishia reflected on the impactful aspects of the program, stating, “While I utilized study guides and online resources, the most transformative element was shadowing diverse Medicaid teams. Witnessing the application of my studies in real-life situations brought the information to life.”

Teresa Shoto emphasized the program’s broader educational objectives, stating, “We aimed for Alishia to grasp the general case management process, effective client engagement, firsthand problem-solving skills, and the dynamics of team collaboration.”

During the 12 weeks, Alishia gained insights into various teams’ processes, from initial assessments to securing approvals for the Elderly and Disabled Waiver program. She witnessed the development of care plans, the coordination of approved services, and the integral role of case managers in ensuring client satisfaction.

Alishia’s experience reinforced the importance of teamwork, consistency in service delivery, and effective time management. She observed the profound joy that emanated from teams as they positively impacted clients’ lives.

In alignment with the Association of Social Work Boards’ report, which indicated a 55.4% pass rate in Mississippi for the LSW exam on the first attempt in 2022, Alishia joined this commendable percentage by successfully passing the exam on her initial try.

Alishia concluded her journey with gratitude, expressing, “The trainee program provided me with the time and guidance from licensed social workers to navigate the study material. Experiencing real-world applications through the mentorship of social work teams was invaluable. I am truly thankful for the opportunity that CMPDD afforded me.”

Alishia’s story exemplifies the transformative potential of collaborative initiatives in workforce development, showcasing the positive outcomes that arise when leaders throughout an organization unite to support individuals in their professional pursuits.

This success not only celebrates Alishia’s accomplishments but also underscores CMPDD’s commitment to innovative approaches that empower individuals to reach new heights in their careers.

DRA Grants Awarded and Program Updates:

- In December, the Delta Regional Authority (DRA) announced their first round of Community Infrastructure Fund (CIF) and Strategic Planning awards. DRA's investment will improve basic public infrastructure, transportation infrastructure, job training and economic development planning to support further economic development in communities across Mississippi. CMPDD staff worked with local municipalities and organizations in the spring on their applications. Two (2) grants were awarded within CMPDD's area:
- The Town of Edwards has been awarded \$2,500,000 for a new water filtration unit to be installed in the Town water system to improve its water quality.
- The City of Crystal Springs has been awarded \$46,000 for a comprehensive economic development plan that will serve as a long-range policy guide to assist the City of Crystal Springs with future economic development decisions.
- DRA is now accepting applications for its 2024 grant cycle. CIF funding is aimed at providing public infrastructure assistance for distressed and non-distressed counties and municipalities in the DRA region. These projects can apply for a maximum \$2,000,000 grant amount.
- DRA will soon be accepting applications for the States Economic Development Assistance Program (SEDAP). These awards are dedicated to improving public infrastructure in distressed and non-distressed communities with an emphasis on job creation.
- DRA is also accepting Strategic Planning grants. This program will give public entities access to strategic planning funds to address long-standing issues and develop a roadmap for economic growth and opportunity. Applicants for this program have the autonomy to apply for a plan that fits the unique needs and challenges in their community. Eligible plans include, but are not limited to, economic development plans, utility rate studies, transportation plans, workforce development plans, and broadband deployment plans with a maximum grant award of \$150,000.

If you have any questions regarding DRA or grant availability, please contact Amy E. Smith at 601.981.1511 or aesmith@cmpdd.org.

Redistricting Updates

Since the release of the 2020 Census population data in September 2021, CMPDD has been working with local jurisdictions to re-draw election districts. CMPDD has contracted with 22 jurisdictions to develop redistricting plans. These include five (5) counties, 15 municipalities and two (2) school districts. To date, 13 plans have been completed and adopted and all others are under review and consideration.

If your community needs assistance with the redrawing of election districts, contact David Wade at 601.321.2161 or dewade@cmpdd.org.

CMPDD Staff Host DRA Staff

In November, CMPDD staff welcomed SEDAP Program Manager, Darci Malam, and SEDAP Program Analyst, Daniel Musgrave, to CMPDD's offices. The Community & Economic Development team received training on grant programs offered by DRA, grant priorities, as well as the new grant portal system. District staff also attended the DRA Summit in New Orleans and the Delta Workforce Grant Program training in the fall.

City Clerks and Central MS Mayors Association

In December, both the City Clerks and the Central MS Mayors Association met at CMPDD. These groups meet quarterly to share best practices and discuss issues at the municipality level. Both groups discussed legislative initiatives for the upcoming session as well as upcoming grant opportunities. In the spirit of the holidays, each group exchanged gifts. The next City Clerk and CMMA meetings will be held in the spring. The Mayors also recognized Mayor Jake Windham for his role at the 2023 CMMA President.

CDBG Grant Updates and New Applications Being Accepted

In the winter of 2023, CMPDD assisted three (3) municipalities and counties with site visits related to their 2023 CDBG applications. These site visits are related to projects that will improve public infrastructure.

Mississippi's CDBG Public Facilities

Program provides municipalities and counties funding for public infrastructure needs. Eligible CDBG Public Facilities and Economic Development projects include improvements to water, wastewater and drainage systems, and streets. CMPDD

staff have already begun working with many municipalities on their upcoming applications. If your county or municipality is interested in applying for the FY24 funding cycle, please contact Amy E. Smith at 601.981.1511 or aesmith@cmpdd.org.



Grandparents Raising

Grandchildren

Grow Your Grandparenting Skills

Classes are held the 3rd Monday of each month at 10 a.m.

Classes will start February 2024.

Share/Learn/Improve

Join us as we discuss common experiences about the joys and challenges around raising grandchildren in a supportive, compassionate, and collaborative environment. This is a no cost education and support group.

Facilitator: Vickie Hughes

1170 Lakeland Drive Jackson, MS 39216



For more information, contact Vickie Hughes or Dr. Chelsea Crittle at 601-981-1516.

Planning Updates

CMPDD is currently under contract with Rankin County, Simpson County, Cities of Brandon, Crystal Springs, Richland, and Senatobia, and the Town of Bentonia for Comprehensive Plan updates and/or zoning ordinance revisions. During this quarter, draft documents have been shared with Rankin County and the City of Senatobia, plan and ordinance development continues for Simpson County, the City of Brandon, and the Town of Bentonia, and existing land use surveys have been conducted in Crystal Springs and Richland.

All Comprehensive Plans developed by CMPDD Planners are now released in both interactive, digital formats and booklet style print copy. The use of these formats allows local governments to easily share and distribute their planning documents in a marketable manner that is attractive to potential and current investors. Zoning documents, as a legal document, retain their traditional print formatting but are now linked to parcel data on interactive maps, which allow quick discovery of the zoning regulations applicable to a specific area or parcel.

Hazard Mitigation Planning

The Disaster Mitigation Act of 2000 requires local jurisdictions to maintain an approved Hazard Mitigation Plan in order to maintain grant eligibility for certain pre- and post-disaster grant programs available through the Mississippi Emergency Management Agency (MEMA) and the Federal Emergency Management Agency (FEMA). Recent spring and early summer severe thunderstorms have brought high winds, large diameter hail, frequent lightning, and tornadoes to Central Mississippi, which highlight the need for mitigation planning. All jurisdictions are reminded to review their adopted Hazard Mitigation Plans annually to ensure accuracy with current visions and needs and to account for any development or population changes that might have occurred that could increase or decrease a community's risk to a particular hazard.

Predicting where the next disaster will occur, and how severe its impact will be on a community is difficult. Given the right conditions natural disasters, such as tornadoes and flash floods, can occur at anytime and anyplace. Their human and financial consequences can be significant. Mitigation Planning is intended to assist communities in determining their risks to natural disasters and developing an action plan to address the known risks by lessening the impact of natural disasters when they do take place. Currently, CMPDD is assisting the City of Gluckstadt, Town of Terry and Mississippi Valley State University with 5-year updates to their Hazard Mitigation Plans. CMPDD Planners remain available to assist local governments with their annual reviews.

SS4A Regional Safety Action Plan Development

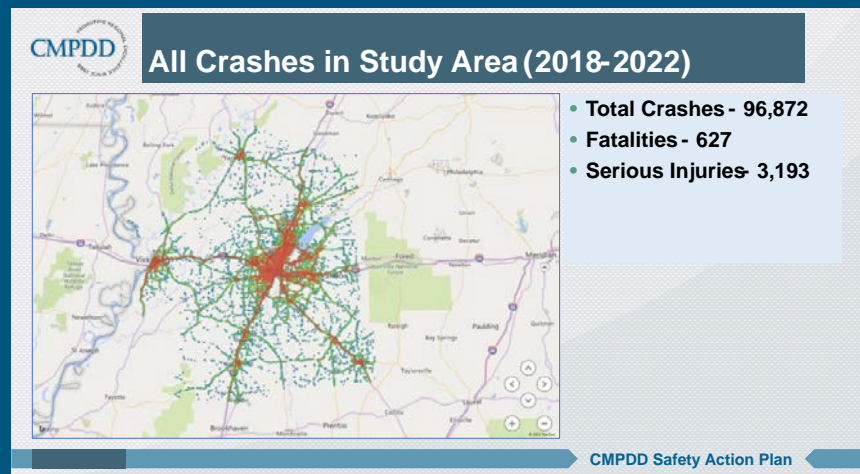
Over the last few months CMPDD, in partnership with our consultant team, has been busy educating the region on the purpose of CMPDD's Regional Safety Action Plan and gathering feedback to help identify the plan's overall safety vision and goals. In October, a robust engagement plan was launched to engage the public and relevant stakeholders, including the private sector and community groups, which allows for both community involvement and feedback. A survey was launched which was promoted on social media and at in person meetings and pop-up events attended by the outreach team throughout CMPDD's seven-county region.

In addition, crash data for the past five (5) years was gathered, and an analysis of existing conditions and historical trends was conducted examining the location of crashes involving fatalities and serious injuries. Between 2018–2022 there was a total of 96,872 crashes throughout CMPDD's region that involved 627 fatalities and 3,193 serious injuries.

The next steps in the planning process will involve conducting an equity analysis and an assessment of current policies, plans, guidelines, and/or standards in place throughout the region to identify opportunities to improve how transportation safety is prioritized.

Once the Safety Action Plan is completed a comprehensive set of projects and strategies, shaped by data, noteworthy practices, as well as stakeholder and citizen input, and equity considerations, will be developed for the region.

Development of CMPDD's SS4A Safety Action Plan is funded by a grant from the US Department of Transportation and the Federal Highway Administration. It is expected to be completed by the Summer of 2024 and will allow local jurisdictions to apply for implementation of capital construction grant funds through the SS4A discretionary grant program. For more information, please contact Lesley Callender at 601.321.2152 or lcallender@cmpdd.org.



CMPDD GIS Technology Update

Geographic Information Systems (GIS) are a computer-based tool which is used to store, visualize, analyze, and interpret geographic data. Modern advances in technology mean the expectations from the public have grown as well. GIS technology can aid local leaders by saving time, saving money, avoiding costs, increasing accuracy, improving productivity, generating revenue, increasing efficiency, automating workflows, managing resources, and aiding in budgeting.

CMPDD has been using GIS for over 30 years. Every year we look to the newest technology to support the member governments in the CMPDD area. Last year CMPDD moved the GIS system to the Microsoft cloud-based system called Azure. This migration

allows the GIS services to remain online even if there is a problem with the connection to file servers in the main CMPDD building. As part of this enhancement the technology team at CMPDD created a GIS Hub which depicts all the communities that we support in one convenient location. <https://gis.cmpdd.org/arcgis/home/>

Saving time

Time is a precious resource, as there never seems to be enough of it. Increasing the number of staff dedicated to a project can improve time but is costly. Time savings is typically the first and most reported benefit of the application of GIS technology. Most organizations witness tremendous time savings in GIS solutions through automated mapping, mobile data collection, and keeping

the public informed via map centric information hubs. CMPDD used GIS to log the spatial location of fire hydrants in the City of Magee. A mobile GIS app, which can be used on a cell phone or tablet, was used to capture the data. The app not only recorded the location of the hydrants but also the pressure, model, and number of valves for each hydrant. Pictures and schematics as well as other notes were also added to each feature. This data was then submitted to the Mississippi State Rating Bureau which then improved the city's fire insurance rating and improved service response times for the fire department.

If you would like to know more about how GIS can aide your organization, please contact Johnathan Simon at jsimon@cmpdd.org or 769.777.7311.

CMPDD's Medicaid Waiver Program Update

The Elderly & Disabled Medicaid Waiver (E&D Waiver) is a statewide program designed to provide in-home assistance to qualified Medicaid beneficiaries. Beneficiaries must be 21 years of age or older. They must qualify by either SSI Medicaid or 300% of SSI Medicaid. They must require assistance with activities of daily living (ADLs) such as bathing, dressing, eating, ambulation and/or transferring; or (instrumental activities of daily living (IADLs) such as laundry, light housekeeping, errands, and/or assistance on community outings. Registered Nurses (RN) and Licensed Social Workers (LSW) work together as a team to assess the referred client, submit for approval of services to the Division of Medicaid (DOM), then manage and coordinate the approved services for all clients.

With November 2023 marking the end of the Public Health Emergency flexibilities set forth by the Division of Medicaid, some Waiver program policies and procedures have returned to pre-pandemic standards. Exceptions or changes that did not return are included in the state and federally approved 5-year Home & Community-Based Elderly & Disabled Waiver Administrative Codes.

Those changes consist of:

1. A statewide reserved capacity 50 slot allotment for individuals who meet certain established criteria. One reserved capacity slot category is for current waiver participants requesting to transfer from one waiver to another waiver. Another reserved capacity category is for individuals on the waiting list and exhibits qualifying conditions for emergency needs assistance. The last category is for qualifying individuals transitioning from a nursing facility back to their homes or qualified place of residence.

2. Case Managers have the authority to conduct regular monthly client contacts via telephone. Quarterly client contacts, initial, recertification, readmit, or transfer assessments must be face-to-face contacts. Face-to-face contact must also be made if the client is unable to communicate by telephone, or in cases of reported/suspected abuse, neglect, or exploitation.

3. With the renewal of the 1915(c) Elderly & Disabled Waiver, two (2) new services were added and have become a part of all available services under the E&D Waiver. Those new services are Medication Management and Environmental Safety Services. Medication Management services are available for persons to receive consultations and follow up visits with a licensed pharmacist to maximize adherence to their therapeutic regimen. Environmental Safety Services are available for qualified individuals that includes minor home repair and maintenance, heavy household cleaning, non-routine garbage disposal, yard maintenance, and pest control services.

Medicaid Waiver is proud to announce that Alishia Holiday, LSW has successfully completed the trainee program sponsored by CMPDD's Workforce Division and Medicaid Waiver. She has passed the licensure exam and has joined a case management team as a licensed social worker.

For more information on Elderly & Disabled Waiver services, please contact CMPDD's Mississippi Access to Care (MAC) Center at 1-844-822-4622. Or contact Teresa Burrell-Shoto, RN, Case Management Director at 601.855.5914 or tburrell@cmpdd.org.

Medicare Advantage Open Enrollment

Are you currently enrolled in a Medicare Advantage Plan? Do you need to review or make additional changes to your coverage? If you responded yes to any of these questions, then now is the time to make those additional amendments. Between January 1 – March 31, Medicare Advantage recipients can make a solitary change to their current coverage. Enrollees of a Medicare Advantage Plan can drop their existing Advantage Plan and shift to another Medicare Advantage Plan with or without drug coverage or revert back to Original Medicare. If a beneficiary swaps to Original Medicare, they too will have the choice to incorporate Part D (Medicare Drug Coverage) as well. If a beneficiary does modify their Medicare Advantage plan, then coverage will begin the first

day of the month after the beneficiary is enrolled.

Before opting to revise coverages, you may want to ask yourself the following: Are healthcare providers/doctors in the plan's network? Are the costs affordable for premiums, co-pays, coinsurance, and deductibles? Does the plan offer quality coverage for extra benefits such as dental, hearing, and vision? Are you satisfied with the plan in its entirety, and does it cater to your individualized health care needs? Once a beneficiary has considered questions such as these, they can proceed with the decision making process.

Furthermore, beneficiaries can be eligible for a Special Enrollment period if certain criteria are met. These special

occurrences include moving, losing current healthcare coverage, being recently released from prison, moving back to the United States after living abroad, or your plan being non-Medicare approved. The time can vary anywhere between 30-60 days to conform your plan. In brief, Medicare Advantage recipients can take this opportunity to change or to continue with current coverage in the allocated time span. If further information or assistance is needed, please contact your local State Health Insurance Assistance Program at 1.844.822.4622 where a SHIP counselor can provide you with informed and unbiased counseling in person or via telephone about your health care decisions.

CMDC BULLETIN

Mr. De'Keither Stamps, President of the Central Mississippi Development Company, Inc. (CMDC), announced the approval of a new loan.

The approval was for The Hotel Whiskey Long Beach, a 27-room boutique hotel and restaurant. The loan was for \$1,297,777 of a \$3,707,935 project under the United States Small Business Administration's 504 Loan Program. The proceeds of this loan will finance the purchase of land, furniture and fixtures and the construction of a hotel in Pascagoula, Mississippi. This hotel will serve as the borrowers' second location and will create five (5) new jobs in the private sector.

CMDC is a commercial lender certified by the U. S. Small Business Administration and works with local banks and other financial institutions in providing debt capital for small businesses. CMDC provides fixed rate low interest long term financing for small businesses and saves thousands of dollars in debt service on fixed assets. This type of financing removes the problem of variable rate financing on long-term assets. Many economic forecasters are certain that interest rates will rise. These predictable interest rate increases will not negatively impact the cash flow of those small businesses that have fixed rate low interest loans through the U. S. Small Business Administration's (SBA) 504 Loan Program. The

most recent fixed interest rates under this loan program were:

SBA 504 Loan Program Interest Rates

<u>TERM (YEARS)</u>	<u>INTEREST RATE</u>
10 (December 2023)	7.33%
20 (December 2023)	6.70%
25 (December 2023)	6.68%

Also, CMDC serves as the Loan Review Board for the Central Mississippi Planning and Development District's (CMPDD's) Minority Business Enterprise Loan Program (MBELP). The MBELP receives its funding from the Mississippi Development Authority (MDA). The interest rate on loans made through this program to a minority owned business is currently 6.50% per annum. The term of a loan can be up to 15 years depending on the use of the loan proceeds (commercial buildings, equipment, inventory, working capital, etc.)

Mr. De'Keither Stamps invites bankers, commercial loan officers, business owners, real estate developers, and general contractors to contact Dwayne Perkins at 601.981.1625, or visit our website at www.cmpdd.org. See the tab labeled "Small Business Loans."

Traffic Count Data Collection Complete for 2023

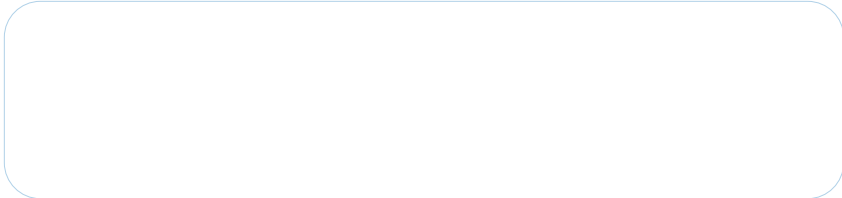
The Metropolitan Planning Organization (MPO) works cooperatively with the Mississippi Department of Transportation (MDOT) to collect traffic count data for all state and non-state maintained roadways that are part of the functional class system in the Jackson Urbanized Area (JUA). The collected traffic count data is used by the MPO in the development of a number of transportation planning activities including the Metropolitan Transportation Plan (MTP), Congestion Management Process (CMP) and Pavement Management System (PMS).

CMPDD follows an annual schedule for collecting traffic count data in each of the three (3) counties that comprise the MPO Planning area, which include portions of Hinds, Madison, and Rankin Counties. Each year CMPDD

staff collects traffic count data in one of the counties and repeats the process annually on a three-year cyclical basis until the data collection process has been completed for each county. Due to each county being counted every third-year, estimates are developed for the interim years in which traffic count data is not collected for the other counties. Based on the rotating annual schedule, traffic count data was collected in 2023 for Hinds County and will be collected for Rankin County in 2024. In addition to the regularly scheduled traffic count data that was collected, CMPDD staff received multiple special request counts during 2023 from local jurisdictions in the MPO Planning area.

At the end of each calendar year all traffic count data collected by the CMPDD is forwarded to MDOT for

analysis. The data is processed, and traffic adjustment factors are applied to the raw data to develop Annual Average Daily Traffic (AADT) counts. The traffic adjustment factors used to develop AADT counts take into consideration high and low seasonal and daily traffic patterns to arrive at a more representative "annual" traffic count for each roadway segment. Once the data is processed MDOT sends the updated AADT data to the MPO and the information is made publicly available through the MPO's traffic count viewer on the CMPDD website. For additional information concerning traffic count data or to make a request for a traffic count study to be conducted please contact Scott Burge at 601.321.2150 or by email at sburge@cmpdd.org.



If the name and address of the recipient needs to be updated, please contact our office at 601-981-1511.

District Sponsors Successful “Santa for Seniors” Holiday Project

Two (2) organizations assisted Central Mississippi Planning and Development District/Area Agency on Aging with successfully executing the 2023 Annual “Santa for Seniors Project.” The Jackson Association of Health Underwriters (JAHU) and Home Instead Senior Care provided Christmas gifts to over 270 needy seniors in our seven-county area. Staff participated in the annual gift-wrapping party held at Home Instead’s main office.

Seniors were asked for their wish lists and the sponsors supplied the items. Robes, blankets, towels, electric heaters, shower chairs, and toiletries are just some of the items purchased for seniors who are homebound and in long term care facilities. Case Managers and Aging staff presented gifts to the seniors who were uplifted and expressed appreciation for the generosity extended to them.

Because of the sponsors continued participation with this project, CMPDD has been able to provide many needy seniors

with Christmas cheer and joy during the holiday season for over 33 years. We are grateful for the interest and generous support of our sponsors and look forward to collaborating with them in the future.



CMPDD BOARD OF DIRECTORS

William Banks,
President

Sally Garland,
Vice-President

Les Childress,
Secretary-Treasurer

Isla Tullos,
Immediate Past President

Michael Monk,
Chief Executive Officer

Volume 39

Number 1