

Central Update

A Quarterly Publication of Central Mississippi Planning & Development District

CMPDD Hosts Meeting with DRA Federal Co-Chairman

CMPDD was honored to host a meet-and-greet with Chris Masingill, Federal Co-Chairman of Delta Regional Authority (DRA), on March 5, 2013. Chairman Masingill briefed those in attendance on the impact of DRA in the region and the outlook for the Authority in coming years. While in Jackson, Chairman Masingill also visited recently awarded DRA projects including the City of Crystal Springs, the Town of Terry, and the University of Mississippi Medical Center's Telehealth Center.

DRA is a federal-state partnership created by Congress, which serves a 240 county/parish area in an eight-state region. In Mississippi, 45 counties (including all 7 CMPDD counties) are eligible for funding under DRA. The purpose of DRA is to remedy severe and chronic economic distress by stimulating economic development partnerships that will have a positive impact on the region's economy.

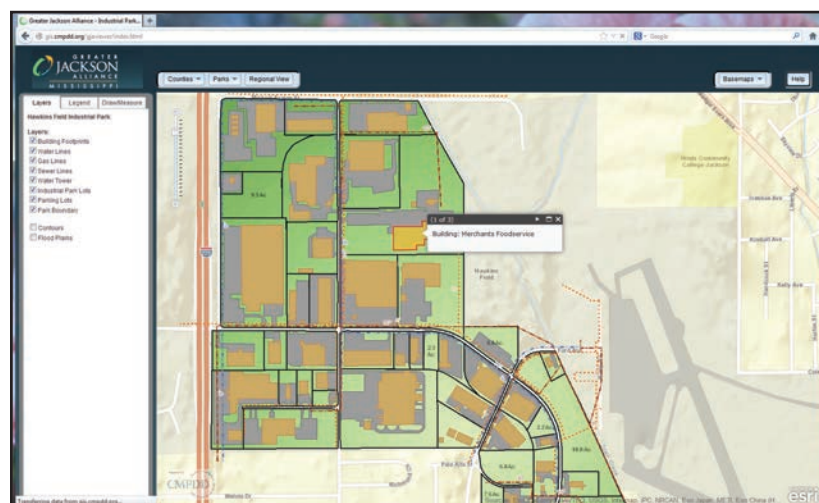


Above(l-r): District CEO Clarke Holmes and DRA Chairman Chris Masingill.



Left: Masingill and Terry Mayor Rod Nicholson at the site of the future Terry Fire Station/Public Works building, a project of the DRA and the USDA/RD.

District Launches Interactive Mapping Tool



In February, the District launched an interactive mapping tool for the Greater Jackson Alliance. The interactive mapping tool allows prospects to look at available infrastructure, utility lines, lot lines, existing buildings, floodways, and topography elevations from the comfort of their office while they are browsing the internet for possible locations or while they are on a conference call with one of the local economic development offices. The tool was designed and developed by CMPDD to provide economic developers in the region with a unique resource to aid them in their business recruitment efforts. The interactive tool is a fluid tool that the District will continue to revise and improve over time as it continues its partnership with the Greater Jackson Alliance and county economic development offices.

MPO Approves Surface Transportation Program Funding Categories

CMPDD serves as the Metropolitan Planning Organization (MPO) for the Jackson Urbanized Area that covers most of Hinds, Madison, and Rankin Counties. The MPO receives a formula allocation of Surface Transportation Program (STP) funds from the Federal Highway Administration (FHWA) to construct a variety of transportation improvements in the Jackson Urbanized Area. With the approval of a new transportation bill last year, *Moving Ahead for Progress in the 21st Century (MAP-21)*, the MPO has been laying the groundwork toward selecting new projects in the area.

On February 13, 2013, the MPO approved the distribution formula for STP funds into three (3) categories, plus a 3% set-aside for smaller municipalities (3,500 persons or smaller) for the Jackson Urbanized Area. The MPO voted to allocate the funds as follows:

- \$16,725,000 to traffic capacity deficiency projects (widening and new alignments)
- \$1,115,000 to traffic operational improvements (traffic signals and turn lanes)
- \$3,791,000 to pavement management projects; and
- \$669,000 for small municipalities (3,500 population or less)

At the upcoming May 8th MPO Policy Committee meeting, MPO staff will present proposed amendments to the Prospectus, which will include the criteria for selecting projects for STP funding and set a deadline for accepting project applications. The project applications will then be reviewed and ranked based upon the approved criteria and presented to the MPO at the August, 2013 meeting for approval.

CMPDD Begins Development of a Master Plan for PRVWSD

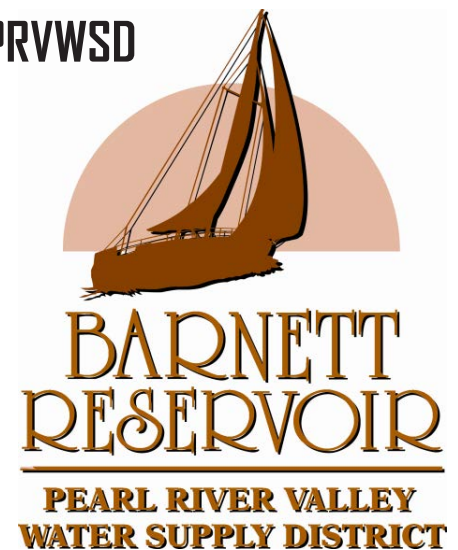
During February, CMPDD began work on the development of a Master Plan for the Pearl River Valley Water Supply District (PRVWSD). This plan will encompass the 33,000 acre lake and the 17,000 acres surrounding the lake, which includes portions of Hinds, Leake, Madison, Rankin, and Scott Counties. The PRVWSD Master Plan will include all elements commonly found in a comprehensive plan, as well as integrate elements of local comprehensive plans in the study area to better facilitate planning and land use controls in the entire area.

CMPDD, along with the PRVWSD, will conduct two charrettes (public meetings) regarding the development of the Master Plan: one in the beginning of the process and one regarding various scenarios to be considered before the final proposed plan is presented. An online survey will also be utilized in an effort to collect input from leaseholders and other interested persons. Following completion of the final draft plan, CMPDD planners will present the proposed Master Plan at public hearings.

As part of this project, the District will develop a web-based GIS mapping application and viewer using CMPDD's virtual server technology and ESRI ArcGIS Server Enterprise software. This new internet based GIS mapping component will enable accessibility to inter-

active land management maps and data layers including such elements as land use, zoning, building footprints, flood zones, garbage collection, transportation systems, utilities, and drainage. These systems will be designed and used for in-house PRVWSD use and/or for public information dissemination as desired.

CMPDD will also perform regional economic impact analysis of the proposed development scenarios presented in the Land Use Plan, and will prepare a cost-benefit study of possible development scenarios that can be used to determine the impact of companies and organizations moving into the Pearl River Valley Water Supply District. The



cost-benefit study will illustrate the direct and indirect impacts of residential, recreational, and business development.



Planning News Briefs

MADISON COUNTY

The Madison County Board of Supervisors adopted the proposed amendments to the county's zoning ordinance at their February 19, 2013 regular meeting. CMPDD had worked with the county's Zoning Administrator to develop a large number of recommended changes.

The amendments ranged from changes of definitions, to changes in permitted and conditional uses. The changes were to make the ordinance more effective and to correct provisions that did not work as anticipated. One of the changes was to delete the entire Manufactured/Mobile Home Subdivisions District, because there was no demand for this type of development. In essence, the amendments were a major cleanup of the ordinance, which all zoning ordinances need over time.

REDISTRICTING

CMPDD is widely recognized for years of experience in redistricting and uses state-of-the-art software specifically developed for redistricting. After the release of the 2010 U.S. Census, CMPDD began to work with its member governments to develop redistricting plans.

To date, redistricting plans have been developed for the cities of Brandon, Brookhaven, Clinton, Crystal Springs, D'Lo, Edwards, Flora, Flowood, Hazlehurst, Magee, Mendenhall, Pelahatchie, Utica, Vicksburg, Wesson, and Yazoo City. Of these municipal plans, all have been precleared by the U.S. Department of Justice except for Yazoo City which has been submitted and approval is expected soon.

The District has also developed plans for Madison, Rankin, Simpson, and Warren County that have been precleared by the U.S. Department of Justice. Plans are currently being developed for Copiah and Yazoo County.

If your city, county, or school district is in need of redistricting, our expert staff will assist you through the entire process including submission and preclearance by the U.S. Department of Justice.

Delta Regional Authority Applications Approved for Funding

Delta Regional Authority (DRA) is a federal-state partnership created by Congress, which serves a 240 county/parish area in an eight-state region. In Mississippi, 45 counties (including all 7 CMPDD counties) are eligible for funding under DRA. The purpose of DRA is to remedy severe and chronic economic distress by stimulating economic development partnerships that will have a positive impact on the region's economy.

Priority for funding is given to four types of projects: (1) Basic Public Infrastructure; (2) Transportation Infrastructure;

(3) Business Development; and (4) Job Training and Employment-related Education. DRA funds may also be used to leverage other federal and state programs. Under federal law, 75 percent of funds are targeted to distressed counties and pockets of poverty, and 50 percent of dollars are earmarked for transportation and basic public infrastructure. For additional information, please contact **Mitzi Stubbs or Gray Ouzts** at **601-981-1511**. Listed below are the applications submitted by CMPDD that DRA has approved for funding:

APPLICATIONS APPROVED FOR DRA FUNDING

<u>Community Name</u>	<u>Project Description</u>	<u>DRA Funds</u>	<u>Matching Funds</u>
City of Crystal Springs	Water and Sewer Improvements	\$307,000	N/A
Madison County	Sanitary Sewer Improvements	200,000	\$205,990
Town of Puckett	Wireless Internet Service	5,640	630
UMMC, Office of Telehealth	MS Delta Healthcare	450,000	N/A

Recreation Trails Program (RTP) Application Submitted for City of Magee

The Recreational Trails Program (RTP) is an 80/20 match program for the development of substantial trail development. The 2012/2013 program was designed to encourage the construction of new trail projects that benefit the environment and the redesign, reconstruction, non-routine maintenance, or relocation of trails that mitigate and minimize the impact to the natural environment. Project sponsors are encouraged to work in partnership with trail-user groups, volunteer groups, the business community, local, state, and federal agencies to develop projects that benefit the various modes of trail uses in a safe and satisfying manner.

CMPDD recently prepared and submitted an application for RTP funds on behalf of the City of Magee. The application is seeking funding for construction of a 10 foot wide, ½ mile long asphalt walking/biking trail with rest areas with benches and landscaping, solar lighting, and signage. The intended use of this facility is for walking, running, viewing local wildlife, skateboarding, skating and bicycling.

The City of Magee is proposing to construct a walking/biking trail that will be located in the R. L. Everett Park. The park, which is named for its donor who is now deceased, is owned by the City and contains 16 acres of property in a beautiful residential area of the City. For the past 24 years this park site has been utilized as a YMCA. In 2011, the YMCA closed their operations and the City assumed some of their programs and full use of the site. This park site contains large open space areas, a functional swimming pool, and a large multipurpose building with two parking areas. The property is accessible from residential areas of the City and from Highway 28 East. The RTP funds will be used to construct a 10 foot wide, ½ mile long multi-use trail along the perimeter of the property with two rest areas, landscaping, and solar lighting. The swimming pool and the multipurpose building will enhance the trail and the restrooms in the multipurpose building will be made available for those using the trail. Magee does not have a facility of this nature in the community and this project will greatly enhance the ability to improve the quality of life for the citizens. The history of the 16 acre parcel of land is unique in that it was donated to



Planned route of walking/biking trail in D. L. Everett Park

the City many years ago for the specific purpose of providing recreational, wildlife, and nature related opportunities for the entire City. Because of a lack of funding and resources the walking/biking trail was never constructed although it has been discussed many times in the past years by the YMCA and the original Youth Center Board of Directors. The project is supported by the citizens of Magee, the medical community, and the City of Magee Health Advisory Council. The facility will provide a safe place for everyone to use as a walking/biking trail including senior citizens, children, adults, and persons with disabilities.

The proposed trail will be available to the local schools, hospital, nursing home, Mill Creek Rehabilitation Services, and local day care centers for their use. Plans are underway to allow local businesses to sponsor rest stations and the City will involve their health insurance provider to promote exercise and physical fitness. The facility will be available to the local Health Trust Organization for use in their fund raising programs and the Magee Health Advisory Council for their "Let's Go Walking" programs. Additionally, the trail will be available for the many community service programs that are done by local churches, and for school volunteer hours commitment projects which are required of high school and college students in the Magee area.

District Staff Attend Statewide Association Meetings

Staff members from CMPDD attended the mid winter conferences of the Mississippi Association of Supervisors (MAS) and the Mississippi Municipal League (MML), both of which were held in Jackson. In addition to speaking with many of the District's local members, CMPDD staff assisted both MAS and MML with their conference registration desks. Furthermore, the Mississippi Association of Planning and Development Districts co-hosted with MAS its annual Legislative Appreciation Reception, which was held January 8. The reception was attended by county officials from across the state, many MS Senate and House members, and Planning and Development District and MAS staff members. This reception serves to further relations with state representatives and their staff and to make the needs of local government known to them, as well as the providing the opportunity to thank them for their continued support.

2013 Annual MAPDD Conference

April 23-26, 2013
Beau Rivage Biloxi, Mississippi

For More Information:
Phone 601-981-1511 or
www.msppdds.com

HOW TO REGISTER

TO REGISTER BY MAIL

Send registration form & fee to:
MAPDD
P.O. Box 4935
Jackson, MS 39296-4935

TO REGISTER BY FAX (preferred)

Fax Registration Form & purchase
order number to MAPDD at
1-601-981-1515.

ON-LINE REGISTRATION FORMS

Go to www.msppdds.com or to your
PDD's website to print additional
forms.

REFUND/CANCELLATION FEE

No refunds will be granted after
April 5, 2013. However, a substitute
from the same organization will be
allowed for a prepaid registered
participant who must cancel.

CERTIFIED MUNICIPAL OFFICIAL CREDITS will be available from MML.

CONTINUING EDUCATION HOURS

will be available at the Conference.
Applications have been approved
by the MS Board of Examiners for
Social Workers.

Registration Form

2013 Annual MAPDD Conference
April 23 - 26, 2013

Name _____
(Mr. Mrs. Ms. Dr.) Last Name First Name MI

Badge Name _____

Title _____

Organization _____

Street or P.O. Box Address _____

City _____ State _____ Zip _____

Phone (_____) _____ E-mail _____

Please check appropriate fee option(s):

Registration (Before 4/5/13) \$275 _____

Late Registration (After 4/5/13) \$325 _____

Spouse Registration* \$100 _____

*Registered Spouse's Name _____

Continuing Education Hours will be offered to Social Workers.

☐ Please check box to sign up for CE Hours.

MML will offer Certified Municipal Official Credits.

☐ Please check box if you plan to participate.

The MAPDD/Valley Golf Tournament, held on April 23, 2013, is a special
event offered to all conference registrants compliments of Valley Services.
You must register before April 5, 2013. Please check the box to sign up.

☐ Golf Tournament (Average Score _____)

The Mary C. O'Keefe Cultural Center in Ocean Springs will be offering special
cooking classes for conference participants on April 23, 2013. Come hungry and
eager to learn the secrets of preparing a dish with Cafe Director Anita Nobles
Arguelles, then enjoy the delicious delights prepared during the interactive
demonstrations. This event is sponsored by Venture Technologies.
Please check the box for the time you wish to participate:

☐ 11:00 a.m. ☐ 1:00 p.m. ☐ 3:00 p.m.

**Full Conference Registration Fee includes registration and admission
to all conference activities. Conference dress will be casual.
More information, including a detailed agenda, is available at www.msppdds.com**

CMDC BULLETIN

Wanda Cowart, President of the Central Mississippi Development Company, Inc. (CMDC), announced the approval of one (1) new loan. This loan was for Ridgeland Hotel Group, LLC for \$2,577,307 of a \$9,204,668 project under the U. S. Small Business Administration's 504 Loan Program. The loan proceeds will be used to purchase land and to fund the construction of a new four story 93 room **Hampton Inn Hotel** in Ridgeland, Mississippi which will create between thirty (30) and forty (40) new jobs in the private sector.

CMDC is certified by the U. S. Small Business Administration and works in cooperation with local banks and other financial institutions in providing debt capital for small businesses. These loans allow a small business to finance land, building, and equipment with a low down payment and long term financing at competitive interest rates. Fixed rate low interest financing for small businesses saves thousands of dollars in debt service on fixed assets. Also, this type financing provides an alternative to variable rate financing on long term assets. Many economic forecasters are certain that interest rates will rise. These predictable interest rate increases will not have a negative impact on the cash flow of those businesses that have fixed rate low interest loans through the U. S. Small Business Administration's 504 Loan Program. The maximum loan amount is 40% of the total project cost up to a maximum loan amount of \$5,000,000 depending on the type of project. The maximum amount for eligible manufacturing projects is \$5,500,000.

Ms. Cowart announced that the current interest rates on

business loans under the U. S. Small Business Administration's CMDC remain very low. Interest rates are as follows:

<u>TERM (YEARS)</u>	<u>INTEREST RATE</u>
10 (March 2013)	3.71%
20 (March 2013)	4.30%

In addition, the District manages a Minority Business Enterprise Loan Program (MBELP) that is administered by the Mississippi Development Authority (MDA), which recognizes the District as a "Qualified Entity" to originate and service loans under the MBELP. The interest rate on loans made through this program cannot exceed two percentage points above or below the Federal Reserve discount rate, which is 0.75% at the present time. Therefore, a minority owned business can obtain a business loan at a fixed rate of 2.75% per annum for a term up to 15 years depending on the use of the loan proceeds.

CMPDD specializes in structuring loans for minority owned businesses (MBE/WBE) and businesses involved in exporting. Small business owners, bankers, commercial loan officers, real estate developers, contractors, and others interested in locking up extremely low fixed interest rates on business loans are encouraged to call **Larry Anderson or Dwayne Perkins at 601-981-1625**.



A \$500,925 CMDC loan helped to finance a total loan of \$1,275,00 to construct a new building for Funtime Skateland and After-School Care in Clinton, creating or saving approximately 11 jobs. The building was financed and construction was begun in 2012. It is now complete and open for business.

SHIP Appreciation Event

On Thursday March 21st, District staff and volunteers were recognized during the State Health Insurance Program (SHIP) Appreciation Event hosted by the Mississippi Department of Human Services, Division of Aging and Adult Services at the Hilton Garden Inn in Jackson, Mississippi. The Division of Aging and Adult Services (DAAS) held the event to acknowledge insurance counselors and volunteers from across the State for all of their hard work serving Medicare beneficiaries in Mississippi with the State Health Insurance Program. The Division of Aging and Adult Services presented the awardees with a certificate of recognition, leather portfolios, and SHIP memorabilia.

Ms. Janie Walters, a motivational speaker and award-winning educator and founder of Champion Communications, served as the event keynote speaker. Ms. Walters' presentation focused on providing exceptional 'Customer Care'



Recognized during the event was (from left to right) Ms. Shirlean Smith, District Counselor; Ms. Sylvia Collins, Volunteer; Ms. Kathy McKeithen, District Counselor; Ms. Earnestine Ratliff, Volunteer. Not pictured: Ms. Charlotte Thompson, District Secretary.

and each attendee was presented with a copy of her book [Blow a Bubble not a Gasket 101 Ways to Reduce Stress and Add Fun to Your Life](#).

For more information on the State Health Insurance Program, please contact our office at 601-981-1516.

District Assists Bridge to Independence (B2I) Program Participant

In March, CMPDD was successful in assisting with its first Bridge to Independence (B2I) program transition. District staff worked in conjunction with other community representatives to assist a long-time resident of Boswell Regional Center in Magee, MS, to successfully transition from an institutional setting back into the community. The resident received institutional services from Boswell Regional Center, which offers specialized program options to Mississippians with intellectual and developmental disabilities. The programs offered by Boswell are designed to iden-

tify the necessary supports for successful community transition. For several months District staff collaborated with the resident, family members, community representatives, Boswell staff, and the Division of Medicaid in order to make this dream a reality. The program participant was able to transition into a beautifully renovated home with three other eligible program participants. In order to continue community and transitional support, Boswell Regional Center assigns a Direct Care Worker to oversee and assist the residents with maintaining their new home.

The District administers the Bridge to Independence (B2I) Program, which is funded by the U.S. Dept. of Health and Human Services for Medicare and Medicaid Services. The District also works with the Mississippi Division of Medicaid to provide these services to eligible participants. B2I is a statewide program designed to assist persons who reside in nursing homes and in intermediate care facilities for those with intellectual and development disabilities to return to the community. Eligible clients receive individualized transition services which include extended pharmacy benefits, caregiver and peer supports, life skills training, safety planning, home and utilities deposits and more. The District's Community Navigator leads a team chosen by the beneficiary to help them locate housing, plan employment and meaningful day activities, learn new skills, and build natural supports.

For more information on the B2I Program, please contact **Janice Coleman** or **Chelsea Crittle** at 601-981-1516.



Rooms in disabled client's new home

On-the-Job Funding Available for New Employee Training

CMPDD, as the grant recipient and administrative entity for Southcentral Mississippi Works, provides funds to WIN Job Centers to help employers train newly hired employees. The On-the-Job Training (OJT) program reimburses employers for up to 50% of a new worker's wages for a specified training period, not to exceed 6 months.



The Mississippi Careers of Tomorrow (MCOT) program focuses on training individuals for highly skilled jobs such as engineers and computer specialists.

The OJT program has a long history and has successfully trained thousands of employees. An employer who needs to do a job, but without specific prior experience, can refer the applicant to a local WIN Center for enrollment into the OJT program. The WIN Center will establish an OJT contract with the employer and the employer can then hire the applicant. Once the new employee completes the training period, the WIN Center will reimburse directly to the employer up to half of the wages paid to the employee during the training.

The OJT program is simple and straight forward and allows an employer to train someone to their specific standards and processes. The OJT reimbursement goes directly to the employer to help offset the cost associated with training a new worker until they become skilled and fully productive.

Currently, a special version of OJT is available to train individuals for highly skilled jobs in Advanced Manufacturing and Information Technology. The Mississippi Careers of Tomorrow (MCOT) program focuses on training engineers and computer specialists. Most trainees in the MCOT program will have college degrees or other advanced education.

For information on the various OJT programs, employers can contact their local WIN Job Center or the workforce staff at CMPDD.

CMPDD BOARD OF DIRECTORS

Mayor Knox Ross, President
James Archer, Vice-President
Supervisor Cobie Collins, Secretary-Treasurer

F. Clarke Holmes
Chief Executive Officer

Volume 28

Number 2

CENTRAL MISSISSIPPI PLANNING AND DEVELOPMENT DISTRICT
P.O. Box 4935 • 1170 Lakeland Drive • Jackson, Mississippi 39296-4935
Phone: 601-981-1511 • Fax: 601-981-1515 • www.cmpdd.org

Nonprofit Org.
U.S. POSTAGE
PAID
Jackson, MS
Permit No. 355

If the name and address of the recipient needs to be updated, please contact our office at 601-981-1511.