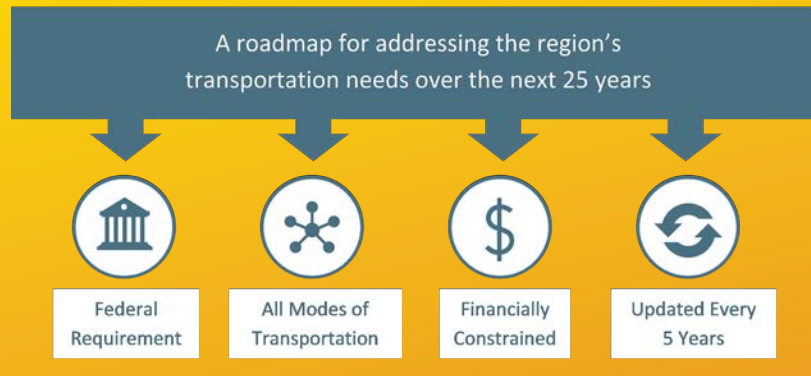


Central Update

A Quarterly Publication of
Central Mississippi Planning &
Development District

CMPDD Releases The Proposed 2045 Long-Range Metropolitan Transportation Plan

What is the Metropolitan Transportation Plan?

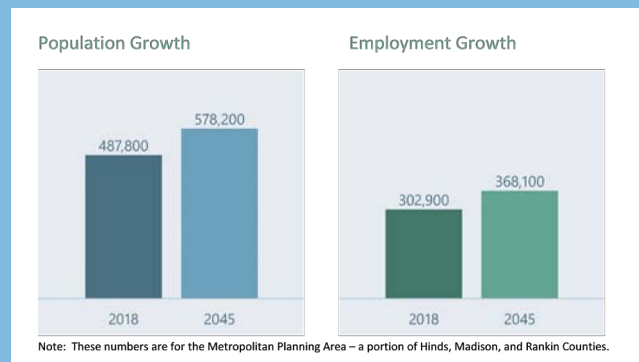


After a two-year planning process, CMPDD is pleased to announce the release of the Jackson Metropolitan Planning Organization's (MPO's) Proposed 2045 Metropolitan Transportation Plan. Metropolitan Planning Organizations, like the Jackson MPO, are required by Federal law to update their long-range Metropolitan Transportation Plan at least every five years.

The 2045 Metropolitan Transportation Plan is a comprehensive blueprint of the region's transportation system needs over the next 25 years for Hinds, Madison, and Rankin Counties. The plan analyzes existing transportation infrastructure and seeks to forecast changes in the region to identify transportation improvements needed to keep people and goods moving smoothly. The plan addresses all aspects of the transportation system including road conditions, traffic congestion, safety, freight movement, non-motorized transportation, and public transit. The plan also identifies a financially feasible list of proposed improvements to be implemented over the next 25 years.

Financial projections show that \$4.43 billion is expected to be available in transportation funding from local, state, and federal sources over the next 25 years for roadway projects. Federal grant funds awarded by the Jackson MPO

cannot be used for local transportation projects unless they are first identified as a need in the region's long-range plan.



The proposed plan consists of two main components the Executive Summary and seven Technical Reports which are available for review on CMPDD's website; <http://cmpdd.org/transportation/2045-metropolitan-transportation-plan/>. The Executive Summary is also available in an interactive story map format.

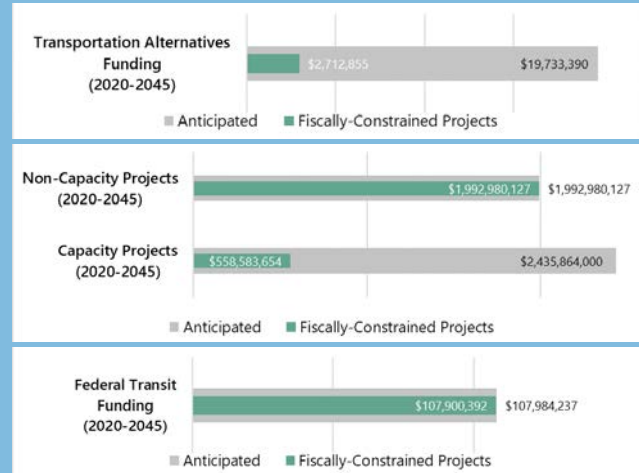
The plan was released for public comment on September 19th, and the comment period will remain open through

(see *Transportation* on p.2)

Transportation (continued from p.1)

November 2, 2020. After consideration of all comments received during the public comment period the Jackson MPO will consider adopting the proposed 2045 Metropolitan Transportation Plan during its November meeting. Once approved, the 2045 Metropolitan Transportation plan will help guide future transportation projects and initiatives in the region over the next five years.

The proposed document represents months of work and was developed in collaboration with MPO Committee members, the MS Department of Transportation, transportation stakeholders, and the general public. For more information please contact Lesley Callender at lcallender@cmpdd.org to learn more about the Jackson Metropolitan Planning Organization's transportation planning process.



City of Jackson and CMPDD Launch Connect JXN

The City of Jackson, CMPDD, and One Voice Mississippi are excited to announce the public launch of Connect JXN. Connect JXN is the branding title for the City's newest Comprehensive Plan that is currently being developed. Connect JXN will provide a guide for transforming Jackson's vision for the next two to three decades into a reality. The resulting plan will become the foundation for land use and zoning decisions, transportation plans, and the construction or renovation of new community facilities.

Community engagement and public input are vital to a successful project. Therefore, we are pleased to announce the release of an initial project survey which is available at connectjxn.com. Please take a moment to visit the project's website and complete the brief online survey. Individuals interested in participating and following the plan development process can sign up for email notifications on the website as well.

CMPDD's Medicaid Waiver Program Update

The Elderly & Disabled Medicaid Waiver (E&D Waiver) is a statewide program designed to provide in-home assistance to qualified Medicaid beneficiaries. Beneficiaries must be 21 years of age or older. They must qualify by either SSI Medicaid or 300% of SSI Medicaid. They must require assistance with activities of daily living (ADLs) such as bathing, dressing, eating, ambulation, and/or transferring; or instrumental activities of daily living (IADLs) such as laundry, light housekeeping, errands, and/or assistance on community outings. Registered Nurses and Licensed Social Workers work together as a team to case manage Medicaid eligible beneficiaries.

Effective July 1, 2020, CMPDD received an increase in Medicaid Waiver slot allotment from 2,400 to 2,674 slots. This higher allotment was based on the increased request for home and community-based services. It was granted by the Division of Medicaid. The District will be allowed to serve 2,674 clients in our seven-county service area. Additional case management teams will be hired to accommodate the increase in total slot allotment. This will allow 274 more beneficiaries the opportunity to enroll in the E&D Waiver program in efforts to prevent or delay institutionalization.

To remain in compliance with all state and federal guidelines and safety precautions during the Covid-19

pandemic, Medicaid Waiver Case Managers continue to conduct monthly case management contacts with their clients via telephone, or other virtual/video conference methods. These exceptional methods of contact are utilized under the direction of the Division of Medicaid. Case Managers also conduct face-to-face, in-home visits as necessary while utilizing all Covid-19 safety precautions. The face-to-face, in-home visits are necessary:

- If the client is unable to be contacted by telephone or virtually
- If the client is unable to communicate by telephone or virtually
- If the client has unmet needs that cannot be adequately addressed by telephone or virtually
- If the Case Manager has identified or received a report of suspected abuse, neglect, or exploitation of the client
- If the initial or transfer assessment and application packet is needed.

For more information on Elderly & Disabled Waiver services, please contact CMPDD's Mississippi Access to Care (MAC) Center at 1-844-822-4622. Or contact Teresa Burrell-Shoto, RN, Case Management Director at 601-855-5914 or tburrell@cmpdd.org. Individuals who own an agency seeking to become a Medicaid Waiver service provider should contact the Division of Medicaid, Long-Term Care Bureau at 601-359-6141.

Jackson Medical Mall Master Plan

The District has developed a Master Plan for the Jackson Medical Mall Foundation. The primary purpose of the Master Plan is to serve as a long-range guide to assist the Foundation in making decisions about future development of properties owned by and adjacent to Jackson Medical Mall.

The Jackson Medical Mall began as a retail shopping mall (Jackson Mall) in 1970. The Jackson Mall was at the time the largest shopping mall within a 400-mile radius of Jackson, Mississippi. The 900,000 square foot facility sitting on over 50 acres was the premier indoor mall in Central Mississippi until the opening of newer malls in Jackson. In 1995, Dr. Aaron Shirley, a long-time resident of the adjoining Midtown neighborhood and former project director of Mississippi's largest community health center, had a vision of reinventing the Jackson Mall into comprehensive healthcare complex. The Jackson Medical Mall was established in 1996 with the support of three (3) of the state's prominent banks.

The Master Plan serves as an implementation guide for the Jackson Medical Mall Foundation to obtain their goal of stimulating economic and community development in the area surrounding the mall. The main campus of the Jackson Medical Mall is the central hub for all activity in the area. The innovative reuse of the property from a regional shopping mall to a regional medical facility and community center has met the healthcare and social service needs of the Jackson metropolitan region for many years. This reuse also provided a stabilizing force for the residential and commercial areas surrounding the mall.

MPO Public Participation Plan

An effective public participation process is a vital element in the development and implementation of all transportation plans and programs implemented by the Jackson Metropolitan Planning Organization (MPO). In September, CMPDD released revisions to the Jackson MPO's Public Participation Plan. The Public Participation Plan provides a list of activities and procedures CMPDD follows to engage the public in the transportation decision making process. The proposed Public Participation Plan can be viewed by visiting CMPDD's website, www.cmpdd.org/public-notice/. The plan was released for public comment on September 19th, and the comment period will remain open through November 2, 2020.

Even with the COVID-19 pandemic, CMPDD has taken proactive steps to ensure the public has had ample opportunities to participate in the transportation decision-making process over the last few months. CMPDD has increased the number of social media posts and paid newspaper advertisements announcing public participation opportunities, which has resulted in increased public interest and submitted comments. CMPDD also made special arrangements to host a virtual public meeting on October 22nd, to present information about the proposed 2045 Metropolitan Transportation Plan and to answer questions.

For more information about the proposed Public Participation Plan or how you can get involved in the transportation planning process contact mpo@cmpdd.org.

CMPDD Submits CDBG Public Facilities Applications For 2020

The Community Development Block Grant (CDBG) Public Facility Program provides grant funds to local units of government for a variety of public improvement projects (e.g., water or sewer facilities, storm drainage, public buildings, street reconstruction, etc.) that benefit low to moderate income families and areas. Special priority is given to water and sanitary sewer projects that eliminate existing health and safety hazards.

Over the past several months the District has been assisting local governments with the preparation of CDBG Public Facility Applications. The District submitted four (4) applications to the Mississippi Development Authority (MDA) for review. Listed below are the applications that were submitted:

| <u>Community Name</u> | <u>Project Description</u> | <u>CDBG Funds</u> | <u>Matching Funds</u> |
|-----------------------|----------------------------|-------------------|-----------------------|
| Village of Beauregard | Unserved Sewer Extensions | \$449,939 | N/A |
| City of Brandon | Sewer System Improvements | \$600,000 | \$600,000 |
| City of Hazlehurst | Water System Improvements | \$600,000 | \$108,000 |
| Town of Edwards | Water System Improvements | \$449,950 | N/A |

Local Hazard Mitigation Plan Updates

CMPDD is currently working to update Hazard Mitigation Plans for Brandon, Ridgeland, and Copiah County. These plans will include the most recent available data related to recent disaster events, an update of critical facilities, and an update of the jurisdictions' mitigation actions. Also included, is a comprehensive risk assessment that determines the threat level of each individual hazard

as it relates to the jurisdiction. These plans are required to be reviewed and updated on a five (5) year cycle to account for any increase in risk or notable changes to the locality. All Hazard Mitigation Plans currently being developed by the District will include a section related to Public Health Emergencies, in response to the ongoing COVID-19 pandemic. The District 5 Hazard Mitigation

plan has completed the State review process and is currently under review by FEMA.

For more information concerning the mitigation planning process underway or to find out how you can be involved in the process contact Gray Ouzts at 601.981.1511 or visit the District's mitigation website page www.cmpdd.org/mitigation-planning/.

CDBG Administration

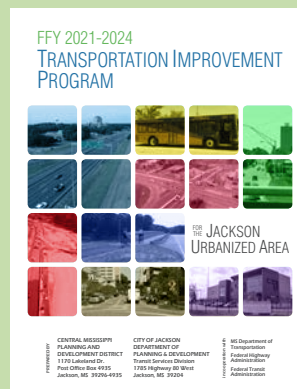
The Town of Wesson recently began construction to make Americans with Disabilities Act (ADA) improvements to the Town's public library. The Town of Wesson will be able to make numerous access improvements for disabled individuals with a CDBG Public Facilities grant in the amount of \$443,801.00. These improvements include designated parking spaces, railings to assist visitors onto the sidewalk, a new floor, lower bookshelves, better lighting, and a restroom that is ADA compliant. Construction on this project is scheduled to be complete by December 2020.

CMPDD is also providing CDBG administration services to the Towns of Bentonia and D'Lo, as well as the City of Pearl. Administrative services include professional services procurement, environmental clearance, and insuring compliance with all HUD and MDA regulations. CMPDD will provide financial management and oversight including submission of requests for cash, reporting compliance, and closeout assistance.

Jackson MPO Approves 2021-2024 TIP and 2021-2022 UPWP Documents

In August, the Jackson Metropolitan Planning Organization (MPO) approved the 2021-2022 Unified Planning Work Program (UPWP) and the 2021-2024 Transportation Improvement Program (TIP).

The Transportation Improvement Program (TIP) is a regional planning document used by MPOs that provides an overview of how federal transportation dollars will be invested over a four-year period by federal, state, and local agencies responsible for building, operating, and maintaining the multimodal regional transportation system. The TIP allocates the limited federal transportation resources available among various capital and operating needs of the area, based on locally developed priorities identified in the region's long-range Metropolitan Transportation Plan. The TIP is required to be realistic in terms of available funding. Meaning the projected amount of expenditures does not exceed the projected amount of revenue each year. The 2021-2024 Jackson Urbanized Area TIP covers the timeframe of October 1, 2020 to September 30, 2024. By federal law, the TIP is required to be updated at least every four (4) years, but the Jackson MPO typically updates its TIP every two (2) years. The TIP document as well as an interactive TIP map is available for review on CMPDD's website, www.cmpdd.org/transportation-improvement-program-tap/.



The Unified Planning Work Program (UPWP) describes all transportation planning activities performed by the Jackson MPO (CMPDD) and the designated public transit provider (JTRAN) during fiscal years 2021 and 2022 (October 1, 2020 through September 30, 2022). It includes a listing of major activities and tasks anticipated to be performed including details on who will

complete the work, the schedule for completing the work, the resulting planning products, and a summary of the proposed funding sources. The 2021-2022 UPWP contains four (4) major program areas with associated subtasks for each including:

- Transportation Planning Process Program Administration
- System Planning
- Data Collection and Analysis
- Support Activities

What is Workforce Development?

What exactly is the definition of “Workforce Development”? It seems to be the catchphrase used by everyone and it likely means different things to different people, depending on their personal or professional perspective.

A simple definition describes the concept as employment initiatives that help create, sustain, and retain a viable workforce. The objective of workforce development is to create economic prosperity for individuals, businesses, and communities. Workforce development focuses on an individual’s ability to grow their skills and develop the tools they need for success; in other words, help to allow individuals to be more productive and prosperous in the workplace which in turn benefits both the employer and the worker.

The benefits of workforce development are two-pronged: employees themselves gain from training or retraining, and employers enjoy a higher-skilled, more productive work team. Employees who are more satisfied with their jobs are more productive and tend to stay in their jobs longer. Employers benefit from a lower turnover rate, increased operational efficiency, and improved productivity.

Workforce Development isn’t a “one and done” initiative involving training. It is an ongoing process of educating and empowering individuals so they can improve their status in life and feel satisfied through their work. The ongoing process includes skills-based training that can help

employees acquire certifications they need to move ahead in their respective occupations. It includes relationship building; which helps employees know how to handle conflict, communicate clearly, manage job-related stress, and help boost the morale of fellow employees. Additionally, continuing education programs, help to show employees that they are an investment by the company and are valued.

There is a major difference between “workforce training” and “workforce development”. Workforce training is a program organized to develop technical knowledge and skills in employees per the requirement of a specific job. It stresses improving the abilities of a worker. Workforce development is an organized activity or an educational process in which individuals learn, grow, and mature. Knowing the difference and understanding what is meant when you hear “workforce development” can help us to be more responsive and able to improve life for people.

The Central MS Planning & Development District’s (CMPDD) Workforce Division continually works to utilize its federal funding received under the Workforce Innovation and Opportunity Act (WIOA) to not only provide workforce training opportunities to our citizens, but also to provide workforce development assistance to individuals and to businesses. If you have a need for assistance with training employees or with further developing your workforce, please contact Mary Powers at mpowers@cmpdd.org.

CMPDD Awarded Economic Development Administration (EDA) CARES ACT Grant

CMPDD has been awarded an Economic Development Administration (EDA) CARES ACT Grant for a sum of \$400,000. These funds will be used to undergo projects with the overall objective to undertake and implement specific measures aimed at better positioning CMPDD and its local government to prevent, prepare for, and respond to economic injury related to the COVID-19 pandemic. In order to meet this objective, the CMPDD has developed a two-year program of work needed to develop and ensure that the following planning and response tools and procedures are incorporated into future economic development and hazard mitigation planning efforts in the central Mississippi region.

Comprehensive Economic Development Strategy (CEDS) Update

The District will update the CEDS to include a focus on economic recovery and resiliency due to the major impact the COVID-19 pandemic has had on both CMPDD and our member governments. These updates will address known and expected impacts to unemployment rates, business closures, and revenue loss.

Hazard Mitigation Plan Updates

The District will update local Hazard Mitigation Plans to

incorporate mitigation strategies related to Public Health Emergencies, such as the COVID-19 pandemic. These updates will increase resiliency to these emergencies and equip local governments with the proper strategies to limit loss of life and respond in a fast and efficient manner.

Commercial Property Inventory

CMPDD will work with member governments to provide an inventory of vacant commercial properties throughout the District. The primary goal of this task is to empower local jurisdictions and economic development agencies to better market properties, many of which have been forced to close due to the economic impact of the COVID-19 pandemic.

Continuity of Operations Plan (COOP)

CMPDD will be developing a Continuity of Operations Plan (COOP) to enhance our remote capabilities in the event of a disruption of normal operations. This plan will be written by District planners as a joint effort between administration and staff to improve our disaster preparedness by providing a protocol for activation, telecommuting, execution of essential functions, and the resumption of normal operations. The primary goal of the COOP is to limit a decrease in productivity during any time that normal operations must be ceased.



Senior Farmer's Market Nutrition Program

The Senior Farmers' Market Nutrition Program (SFMNP) is a cooperative effort between the Mississippi Department of Agriculture and Commerce and the Central Mississippi Area Agency on Aging. The program is designed to improve the health of seniors by providing access to fresh fruits and vegetables. It is also designed to increase domestic consumption of agricultural commodities, and to increase the use and awareness of local farmers' markets.

Seniors (60 years of age or older) with specific income qualifications were eligible to receive a one-time benefit of \$25.00 (five - \$.5.00 vouchers) to shop for fruits and vegetables at an authorized local farmer's market. Program participants were able to redeem the vouchers at an

authorized local farmer's market through October 2020.

This year due to COVID-19, the District made the decision to adjust the distribution process in effort to follow the CDC guidelines and maintain the health and safety of participants. Alternate arrangements and protocols were implemented, and 735 seniors received assistance with completing the application process over the telephone. Throughout the summer District staff and local providers distributed vouchers to seniors during door to door meal deliveries. For more information on the Senior Nutrition Program, contact the Area Agency on Aging at 601-981-1516.

Small Municipalities and Limited Population Counties Grant Program Applications Submitted

The Mississippi Small Municipalities and Limited Population Counties Grant Program (SMLPC) is designed for making grants to small municipalities and limited population counties or natural gas districts to finance projects to promote economic growth in the State. Grants are available to municipalities with a population of 10,000 or less, and counties with a population of 30,000 or less. Eligible projects financed with SMLPC must be publicly owned and address at least one of the priorities listed below.

- **Priority #1:**
Economic development-related improvements to include water, sewer, street, and drainage improvements for the benefit of site development, industrial parks, business districts, tourism destinations, and projects that improve the competitiveness of a community.
- **Priority #2:**
Downtown improvements to include: sidewalks, lighting, façade improvements, beautification improvements (waste receptacles, stop signs, street signs, landscaping, awnings, etc.), and other downtown improvements as approved by MDA.
- **Priority #3:**
Non-economic development related water, sewer, street, and drainage improvements.
- **Priority #4:**
Purchase, construction or rehabilitation of public buildings to include: town halls, libraries, police stations, fire stations, community centers, courthouses, other publicly owned buildings as approved by MDA.

The maximum grant amount is \$150,000. There is a 10% match requirement for a community with a population of 3,500 or less; and a 20% match requirement for communities with a population greater than 3,500. The match does not have to be cash only.

Central Mississippi Planning and Development District submitted five (5) SMLPC applications for the following cities/counties:

| <u>Community Name</u> | <u>Project Description</u> | <u>SMLPC Funds</u> | <u>Matching Funds</u> |
|-----------------------|---------------------------------|--------------------|-----------------------|
| City of Hazlehurst | Sewer Improvements | \$124,958.24 | \$ 25,041.33 |
| City of Magee | City Hall Improvements | \$ 95,820 | \$ 30,000 |
| City of Mendenhall | City Park Improvements | \$150,000 | \$ 15,000 |
| City of Raymond | Police Dept. Bldg. Improvements | \$150,000 | \$150,000 |
| Town of Puckett | Puckett Park Improvements | \$150,000 | \$ 15,000 |

If you have any questions or would like additional information concerning the SMLPC grant program, please contact Mitzi Stubbs at 601.981.1511.

CMD C BULLETIN

Councilman De’Keither Stamps, President of the Central Mississippi Development Company, Inc. (CMD C), announced the approval of three (3) new loans.

The first approval was for **Global MidSouth Corporation**, a Checkers and Rally’s fast food restaurant franchisee. The loan was for \$456,000 of a \$1,140,000 project under the United States Small Business Administration’s 504 Loan Program. The proceeds of this loan will finance the purchase of land, equipment and the construction of a commercial building in Oxford, Mississippi. This restaurant will serve as the borrowers’ fourth restaurant and will create 35 new jobs in the private sector.

The second approval was for **Global MidSouth Corporation**, a Checkers and Rally’s fast food restaurant franchisee. The loan was for \$590,000 of a \$1,475,000 project under the United States Small Business Administration’s 504 Loan Program. The proceeds of this loan will finance the purchase of land, equipment, and the construction of a commercial building in Pontotoc, Mississippi. This will serve as the borrowers’ fifth restaurant and will create 35 new jobs in the private sector.

The third approval was for **Murky Properties LLC**, which operates Murky Waters, BBQ Restaurants. The loan was for \$347,000 of an \$867,500 project under the United States Small Business Administration’s 504 Loan Program. The proceeds of this loan will finance the purchase of the commercial building in Bay St. Louis, MS. This will serve as the borrowers’ fourth restaurant and will create 25 new jobs in the private sector.

CMD C is a commercial lender certified by the U. S. Small Business Administration. It works with local banks and

other financial institutions in providing debt capital for small businesses. CMD C provides fixed rate low interest long term financing for small businesses and saves thousands of dollars in debt service on fixed assets. This type financing removes the problem of variable rate financing on long term assets. Many economic forecasters are certain that interest rates will rise. These predictable interest rate increases will not negatively impact the cash flow of those small businesses that have fixed rate low interest loans through the U. S. Small Business Administration’s (SBA) 504 Loan Program. The most recent fixed interest rates under this loan program were:

SBA 504 Loan Program Interest Rates

| <u>TERM (YEARS)</u> | <u>INTEREST RATE</u> |
|---------------------|----------------------|
| 10 (September 2020) | 2.28% |
| 20 (September 2020) | 2.36% |
| 25 (September 2020) | 2.41% |

Also, CMD C serves as the Loan Review Board for the Central Mississippi Planning and Development District’s (CMPDD’s) Minority Business Enterprise Loan Program (MBELP). The MBELP receives its funding from the Mississippi Development Authority (MDA). The interest rate on loans made through this program to a minority owned business is currently 3.00% per annum. The term of a loan can be up to 15 years depending on the use of the loan proceeds (commercial buildings, equipment, inventory, working capital, etc.)

Councilman De’Keither Stamps invites bankers, commercial loan officers, business owners, real estate developers, and general contractors, to contact Dwayne Perkins at 981-1625, or visit our website at cmpdd.org. See the tab labeled “Small Business Assistance.”

Delta Regional Authority (DRA) SEDAP Application Approvals

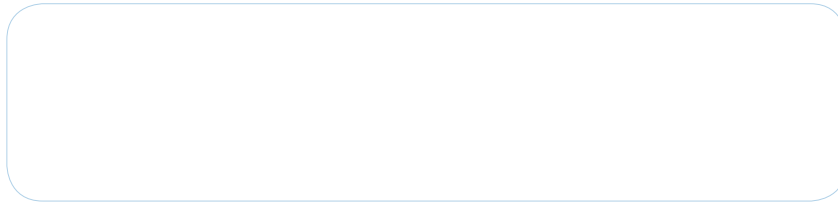
DRA is a federal-state partnership created by Congress, which serves a 252 county/parish area in an eight-state region. In Mississippi, 45 counties (including all 7 CMPDD counties) are eligible for funding under DRA. The purpose of DRA is to remedy severe and chronic economic distress by stimulating economic development partnerships that will have a positive impact on the region’s economy. This year approximately \$1,635,177 will be available for the State of Mississippi.

In Central Mississippi, the DRA State’s Economic Development Assistance Program (SEDAP) is only open to public and non-profit entities in the DRA-designated counties. To find out if your project is located within the DRA designated area or for more information about DRA, please visit their website www.dra.gov.

Listed below are the applications that were approved for funding:

| <u>Community Name</u> | <u>Project Description</u> | <u>DRA Funds</u> | <u>Matching Funds</u> |
|---------------------------------|----------------------------|------------------|-----------------------|
| Copiah County – Industrial Park | Sanitary Sewer Extensions | \$241,350 | \$109,350 |
| Warren County – Ceres Site B | Access Road Construction | \$256,500 | \$590,400 |

For additional information, please contact Mitzi Stubbs at 601.981.1511.



If the name and address of the recipient needs to be updated, please contact our office at 601-981-1511.

CMMA Meeting

CMPDD will host a luncheon meeting for the Central Mississippi Mayors Association (CMMA) on Tuesday, October 20, 2020.

The CMMA is made up of 34 cities, towns, and villages in the District and the quarterly meetings are normally held at the CMPDD office. The purpose of these CMMA quarterly meetings is to discuss current issues facing the municipalities and exchange ideas of improving each individual area.



Medicare Open Enrollment Virtual Workshop

The District's State Health Insurance Program hosted its first virtual Medicare Open Enrollment workshop on September 22, 2020. Eating well, exercising regularly, and selecting the right health care coverage are all a part of living a healthy lifestyle. Knowing the basics of how Medicare works can help seniors navigate through the various advantage plans and understand the programs traditional benefits and expenses. It's a critical period for seniors, because open enrollment allows them to shop around for plans and compare coverage options. Workshop presenters from the Social Security Administration and the Mississippi Division of Medicaid shared valuable information and the advantages of low-income assistance programs.

Counselors provided an extensive overview on Medicare coverage which created an engaging and exciting opportunity for participants to ask questions while receiving assistance and tips on how to maneuver the Medicare maze. Open enrollment starts on October 15, 2020, through December 7, 2020, and Insurance Counselors will be available to assist beneficiaries individually with free unbiased counseling and educational services. Seniors are encouraged to use this time to determine if there are plans better suited to meet their needs and/or save them money.

For more information, contact a SHIP Insurance Counselor at 601-981-1516 or 1-844-822-4622.

CMPDD BOARD OF DIRECTORS

Isla Tullos,
President

William Banks,
Vice-President

Sally Garland,
Secretary-Treasurer

Les Childress,
Immediate Past President

Michael Monk,
Chief Executive Officer

Volume 35 Number 4