



Central Update

APRIL 2018

A Quarterly Publication of
Central Mississippi Planning &
Development District

CMPDD and Hinds Community College Partner to Create a Comprehensive One-Stop Center

A major announcement event was held on Thursday, March 29th to publicly unveil plans for a Comprehensive One-Stop Center. This project is a coordinated effort spearheaded by the workforce division of CMPDD, which administers Workforce Innovation and Opportunity Act (WIOA) funded programs in the Southcentral MS Works Workforce Development Area, and Hinds Community College. The State's Workforce Plan, developed in accordance with the federal WIOA law, calls for each of the state's workforce areas to develop a "Sector Training Plus Comprehensive One-Stop Center". Such a Center is defined in the Plan as one in which the workforce partners are physically co-located and providing services, and where actual training takes place.

The project will redevelop the former McRae's/Belk department store into a center that offers the workforce-related services of the Mississippi Departments of Human Services, Rehabilitation Services and Employment Security in addition to offering on-site career technical training provided by Hinds Community College. The new center will serve as an economic development tool for central Mississippi. The Center will occupy what is currently vacant space on both floors of the southeast end of the Metrocenter Mall. The top floor will include the offices for all of the workforce partner agency staff, a Resource Room for customer use, computer labs, meeting and training space, as well as Hinds CC classroom space for training programs such as an Early Childhood



Academy, Mechatronics, Robotics, Adult Basic Education, and 3D design. The bottom floor of the space will house classrooms for metal fab machining and welding, as well as an event space for hosting Career and Job Fairs and other workforce-related events. Smart Start classes and National Career Readiness Certificate (NCRC) testing will also be conducted at the Center.

At the announcement event, a crowd of approximately 200 heard various individuals discuss the plans for and benefits of the Center. Representatives of Hinds Community College, the Hinds County Board of Supervisors, the MS Community College Board, CMPDD, and Jackson Mayor Chokwe Lumumba all praised the efforts of this collaborative endeavor.

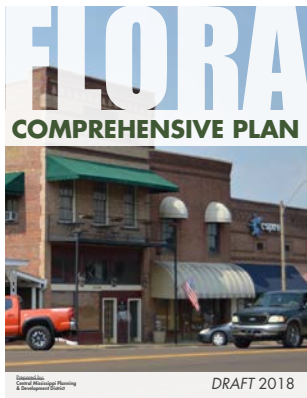
The project has been in the development phase for the past two years and has been a common-goal effort of many different agencies and community helpers. The Hinds County Board of Supervisors played an instrumental role in helping to fund the project by enacting a millage increase last fall.



The Announcement event was capped off with having key officials put on hard hats and use sledgehammers to smash into a wall that previously divided parts of the old department store. Once started, renovation of the space is expected to take approximately six to eight months.



Town of Flora Comprehensive Plan and Zoning Ordinance Update



The District is finalizing the Town of Flora's Comprehensive Plan and will complete an update of their Zoning Ordinance next quarter. The Plan update includes revisions to all four elements including the Goals and Objectives, Land Use Plan, Transportation Plan, and Community Facilities Plan. The new Comprehensive Plan will also be integrat-

ed into an online interactive system that is linked to the web-based GIS mapping application and viewer that is also being updated by the District. The Comprehensive Plan update will set the foundation and vision for updates to the Town's Zoning Ordinance.

The Town's Zoning Ordinance, which was adopted in 2005 and amended in 2012,

is undergoing a thorough review and revision to ensure that it matches with the community's vision for growth today. As new trends and judicial rulings are released, the local zoning ordinance must be updated to ensure it adequately addresses the current concerns.

DRA Announces 2018 Application Cycle

Delta Regional Authority (DRA) has announced the 2018 round of State's Economic Development Assistance Program (SEDAP) investments. SEDAP investments may be used to fund projects for basic public infrastructure, transportation infrastructure, business development (with focus on entrepreneurship), and workforce development. In Central Mississippi, the SEDAP program is only open to public and non-profit entities in the DRA-designated counties. To find out if your project is located within the DRA designated area or for more information about DRA, please visit their website www.dra.gov. This year approximately \$1,869,800.55 will be available for the State of Mississippi.

Project applications may be completed online at www.dra.gov and submitted to CMPDD beginning March 1st through June 29th. Local governments, public bodies, and non-profit entities in the Central MS Planning and Development District (CMPDD) that are interested in participating in the 2018 DRA Federal Grant Program should contact Mitzi Stubbs at 601.981.1511 to begin the application process.

DRA is a federal-state partnership created by Congress, which serves a 252 county/parish area in an eight-state region. In Mississippi, 47 counties (including all 7 CMPDD counties) are eligible for funding under DRA. The purpose of DRA is to remedy severe and chronic economic distress by stimulating economic development partnerships that will have a positive impact on the region's economy.

Market Profile Services Central Mississippi Mayors Association

One of the District's most popular data products is the Radial Demographic Profile. It utilizes geo-referenced data and can provide a wide range of demographic and business profile information for a given radius or drive-time polygon around a specified point. Radial Profiles are critical components of market research for business location analysis. They are utilized by entrepreneurs, businesses looking to expand or locate, and economic developers looking to attract new business and industry to the area. If you or someone you know would like to discuss a need for these services please contact the District's Regional Data Analyst, Jay Wadsworth at jwadsworth@cmpdd.org.

The Central Mississippi Mayors Association (CMMA) recently awarded \$1,000 scholarships to two (2) deserving High School Seniors that will be attending college this fall. The scholarship recipients were chosen from the top five (5) candidates that were invited to CMPDD for a face-to-face interview by the CMMA rating and interview team.

The two (2) winners were invited to attend the next scheduled CMMA meeting where they will address the CMMA members by telling them a little about themselves, the school they plan to attend, and their plans for the future.

The CMMA is made up of Mayors from 34 cities, towns and villages in

the seven (7) county Central Mississippi Planning and Development District (CMPDD) area. They hold quarterly meetings at CMPDD's office. The purpose of these meetings is to discuss current issues facing the municipalities and exchange ideas of improving each individual area.

City Clerks Meeting

CMPDD recently hosted a luncheon/meeting for the City Clerks in the Central Mississippi Planning and Development District. The Clerks shared best practices with each other and discussed issues that directly affect their jobs. We are very happy to facilitate meetings such as this because increased efficiency greatly benefits our participating governments and those they represent.

The Jackson MPO Announces Funding for Seven (7) Metro-Area Transportation Alternative Projects

In February, the Jackson Metropolitan Planning Organization (MPO) approved \$1.7 million in funding for metro-area Transportation Alternatives (TA) projects. The TA program is a federal-aid transportation program that provides funding through the MPO, as part of the 2015 Fixing America's Surface Transportation (FAST) Transportation Bill, to local municipalities and counties for transportation alternative improvements in the urbanized area. Transportation alternatives funding is made available for projects which promote accessibility and mobility for non-drivers through the development of on- and off-road bicycle and pedestrian facilities and infrastructure projects which provide additional modal options for accessing schools and public transportation.

In total, the CMPDD received eleven (11) applications requesting more than \$3.5 million in TA funding. The 1.7 million in funding was made available to the top seven (7) rated projects. Combined, jurisdictions receiving the TA funding have committed to provide over \$800,000 in local matching funds.

Local jurisdictions submitted applications to the CMPDD in November, 2017. The applications were graded and evalu-

ated based on criteria approved by the MPO Planning Policy Committee including:

- Whether or not the project provided more than the minimum required local matching funds.
- What percentage of the total funds available did the project request? Projects requesting the least amount of Federal funding received priority.
- Whether or not the project is ready to go to construction. Projects ready to proceed to construction were given priority over projects that may still have design work and/or utility and right-of-way factors to address.
- Whether or not the project improves connectivity to schools, transit stop locations, or other bicycle and/or pedestrian facilities.

Projects rating the highest in each category were selected by the MPO Planning Policy Committee to receive Federal TA grant funding by the Jackson MPO. For more information regarding the MPO transportation planning process or Transportation Alternatives program visit the MPO website at www.cmpdd.org.

Projects selected for TA funding by the MPO include:

Entity	Project	MPO Funding	Local Matching Funds
Transportation Alternatives			
Clinton	Arrow Dr./Cynthia Rd. Multi-Use Path between Clinton Park Elementary & Traceway Park	\$157,300	\$84,700
Clinton	Arrow Dr. Multi-Use Path between Pinehaven Dr. & Clinton High School	\$315,600	\$105,200
Jackson	Peachtree St. Multi-Use Path between Riverside Dr. & Woodrow Wilson Ave.	\$218,026	\$145,350
Jackson	LeFleur East Multi-Use Path along Eastover Dr. between Eastwood Dr. & Ridge-wood Rd.	\$150,000	\$100,000
Jackson	Woodrow Wilson Ave. Multi-Use Path between Peachtree St. & State St.	\$194,337	\$129,558
Madison	Old Canton Rd. Multi-Use Path between S. Calumet Gardens Dr. & Strawberry Patch Park	\$263,320	\$65,830
Madison	St. Augustine Dr. Multi-Use Path between Strawberry Patch Park & Sherbourne South Dr.	\$401,417	\$176,543

Town of Braxton Zoning Ordinance Completed

Since Braxton is experiencing some commercial development, it had become necessary for the Town to have the tools to ensure more orderly development for the future.

In December, 2017 the District presented the Town's first Zoning Ordinance to the Mayor and Board of Aldermen. Following a public hear-

ing on March 6, 2018, the Mayor and Board of Aldermen adopted the Zoning Ordinance, which included a zoning map for Braxton.

The ordinance included basic residential, commercial, and industrial zoning districts. The ordinance was scaled to the town's size and staff to administer the ordinance. In addition,

the District prepared a Zoning Operations Manual to help the zoning administrator in administering the Ordinance. The manual covers such things as procedures for zoning violations and procedures for variances, conditional uses, and zoning text and map amendments.

Town of Edwards Updating Comprehensive Plan and Zoning Ordinance

The Town of Edwards has contracted with the CMPDD to develop a Comprehensive Plan and a comprehensive revision of their Zoning Ordinance. District staff have completed the existing Land Use Survey to determine the current development patterns and will soon meet with the Mayor, Board Members, and Department Heads to discuss the general vision and direction for the Plan. District staff will continue to meet with

the Mayor and Board over the next few months to develop a draft of the Plan. Public input will be sought throughout the development of the Plan, and prior to adoption of the Comprehensive Plan, a public hearing will be held. Upon completion of the Comprehensive Plan, District Planners will assist the Town with revisions to their Zoning Ordinance.

Hazard Mitigation Planning Update

Over the last few months, CMPDD has prepared and submitted for approval Hazard Mitigation Plans for the Town of Terry and Mississippi Valley State University. The Disaster Mitigation Act of 2000 requires local jurisdictions to maintain an approved Hazard Mitigation Plan in order to maintain grant eligibility for certain pre- and post-disaster grant programs available through the Mississippi Emergency Management Agency (MEMA) and the Federal Emergency Management Agency (FEMA). In addition, Plans are required to be reviewed and updated every five-years to account for any changes that might have occurred that could increase or decrease a commu-

nities risk to a particular hazard.

Predicting where the next disaster will occur, and how severe its impact will be on a community is difficult. Given the right conditions natural disasters, such as tornadoes and flash floods, can occur at anytime and anyplace. Their human and financial consequences can be significant. Mitigation planning is intended to assist communities in determining their risks to natural disasters and developing an action plan to address the known risks by lessening the impact of natural disasters when they do take place.

In the past few years, revised Mitigation Plans were developed and ap-

proved for Bentonia, Brandon, Byram, Clinton, Eden, Flora, Florence, Flowood, Georgetown, Hazlehurst, Jackson, Pearl, Richland, Ridgeland, Pelahatchie, Satartia, Vicksburg, Wesson, Yazoo City, Copiah County, Madison County, Rankin County, Warren County, and Yazoo County. CMPDD has also prepared a Mitigation Plan for Jackson State University. For more information concerning the mitigation planning process underway or to find out how you can be involved in the process contact CMPDD Planning Staff, at 601-981-1511 or visit the District's mitigation website page <http://www.cmpdd.org/mitigation-planning/>.

CMPDD's Medicaid Waiver Program Update

CMPDD's Elderly and Disabled (E&D) Home and Community Based Medicaid Waiver program provides Case Management (CM) and Home Delivered Meal (HDM) services to Medicaid eligible elderly and / or disabled recipients who desire to remain in their home setting. The Registered Nurse and Licensed Social Worker team coordinates all approved Waiver services and conducts monthly home visits to assure the services are meeting the clients' needs.

As the need for in-home services increases, the referral base for Waiver services also increases. The District maintains an average of 2,200 referrals of potential Waiver beneficiaries. When an opening for a new applicant becomes available, the CM team selects the next referral, conducts the initial screening

assessment, and submits the necessary information to the Division of Medicaid for approval.

Below, Teresa Shoto, RN, CM Director, explains the Waiver program to some of the interested residents of the LeFleur Haven senior housing complex. Informative brochures were distributed and reviewed. This included information about the services available, qualifications to receive each service, the assistance provided by each service, and how to apply for the services.

During the initial in-home assessment, the applicant chooses their provider from the Freedom of Choice list of approved providers. This list includes 29-Adult Day Care providers, 88-Personal Care Attendant providers, 86-In-

Home Respite providers, and 11-Home Health agencies.

For more information on Elderly & Disabled Waiver CM services, please contact Teresa Shoto, RN, Case Management Director, at 601-855-5914 or tburrell@cmpdd.org. Contact the Division of Medicaid for information on how to become a Waiver provider.



Yazoo City Completes CDBG Project for ADA Renovations

The City of Yazoo City successfully completed Americans with Disabilities Act (ADA) renovations of City Hall using Community Development Block Grant (CDBG) funds. Construction began in February of 2017 and was completed in January 2018. With the help of a 2015 CDBG Public Facilities grant in the amount of \$288,661, the City was able to renovate City Hall making it

ADA accessible. The City Hall building was built in 1906 and is a two story, five-bay brick building with hip roof, central pediment, and a bell tower. It is also among the earliest Georgian Revival public buildings in Mississippi. The City Hall building houses the Mayor's office, the office of the City Clerk, and the Fire Department. With the ADA renovations complete, it is much easier for

citizens with disabilities to utilize City Hall.

The District assisted the City of Yazoo City with the submission of their CDBG application and also provided administrative services. For additional information on the CDBG program, please contact Mitzi Stubbs or Jason Larry, 601-981-1511.

Copiah County Medical Center Project Receives NADO Award

The City of Hazlehurst, Copiah County Board of Supervisors, Copiah Water Association, the Copiah County Medical Center, and Mississippi as well as the Central Mississippi Planning and Development District received a 2017 Innovation Award from the National Association of Development Organizations (NADO) for the Infrastructure Improvements to Support the Copiah County Medical Center.

The total project cost was approximately \$17 million. The Copiah County Medical Center invested \$16 million through private bank loans to construct and equip the new facility. The City of Hazlehurst utilized Community Development Block Grant (CDBG) funds from the Mississippi Development Authority (MDA) and Delta Regional Authority (DRA) funds to supply sewer infrastructure to the site, which cost \$400,000. Water infrastructure was supplied to the new facility by the Copiah Water Association. The Association was awarded \$385,000 by the Economic Development Authority (EDA) and provided \$278,000 in private match to complete the necessary work.

NADO is a Washington, DC-based membership association of regional development organizations that promotes programs and policies that strengthen local governments, communities, and economies through regional cooperation, program delivery, and comprehensive strategies. The association's Innovation Awards program recognizes regional development organizations and their partners for improving



the economic and community competitiveness of our nation's regions and local communities. 2017 marked NADO's 50-year anniversary of supporting regional economic development across the country.

CMPDD Host Technical Skills Workshop for Planners

On March 1st CMPDD was pleased to host a Technical Skills Workshop for the Mississippi Chapter of the American Planning Association (APA) yesterday. Nearly 50 planning professionals from across the state attended the all-day event. Topics included Code Writing, Sign Design and Ordinances, Site

Plan Review, and Communicating with Boards. The Districts three AICP certified planners, William Peacock, Gray Ouzts, and David Wade were all in attendance to keep current on emerging trends in planning and to receive the required continuing education credits.



Jackson MPO Adopts Safety Targets

Federal legislation has directed all Metropolitan Planning Organizations (MPOs) and State Departments of Transportation (DOTs) to implement a performance-based transportation planning and programming approach. Performance-based planning allows MPOs and State DOTs to examine data, past and present, and evaluate the performance of their transportation investments against a number of federally required measures in order to track progress toward the achievement of national goals.

Working collectively, MPOs and State DOTs are required to establish performance targets for each applicable measure established by federal legislation. A measure is a statement of what is being assessed, and a target is a quantifiable level of performance or what you hope to achieve within an identified time period. The Jackson MPO is required to set performance targets over the next year for key performance areas such as safety, pavement conditions, bridge conditions, travel time reliability, freight reliability, and transit assets.

In February, the Jackson MPO approved establishing 2018 safety performance target by electing to support the state's established safety targets.

2014-2018 MISSISSIPPI SAFETY TARGETS	
Measure	Target
Number of Fatalities	677.8
Rate of Fatalities per 100 million VMT	1.668
Number of Serious Injuries	574.4
Rate of Serious Injuries per 100 million VMT	1.425
Number of Non-motorized Fatalities and Non-motorized Serious Injuries	119.8

Safety targets are established by analyzing data based on a 5-year rolling average for each measure. State DOTs and MPOs are required to establish safety targets annually. For more information about safety targets or the implementation of performance measures visit the MPO's website, www.cmpdd.org/transportation/performance-management/.

FATALITIES						
	2012	2013	2014	2015	2016	5-year Avg.
Mississippi	582	613	607	677	690	633.8
Jackson MPO	52	49	55	71	76	60.6

FATALITY RATE PER 100 MILLION VMT						
	2012	2013	2014	2015	2016	5-year Avg.
Mississippi	1.510	1.580	1.540	1.700	1.700	1.606
Jackson MPO	0.504	0.439	0.547	0.844	0.971	0.661

SERIOUS INJURIES						
	2012	2013	2014	2015	2016	5-year Avg.
Mississippi	631	568	506	506	627	567.6
Jackson MPO	53	51	41	46	47	47.6

SERIOUS INJURY RATE PER 100 MILLION VMT						
	2012	2013	2014	2015	2016	5-year Avg.
Mississippi	1.636	1.465	1.281	1.269	1.543	1.439
Jackson MPO	0.523	0.475	0.304	0.354	0.371	0.405

NON-MOTORIZED FATALITIES						
	2012	2013	2014	2015	2016	5-year Avg.
Mississippi	55	59	60	68	71	62.6
Jackson MPO	7	14	11	15	11	11.6

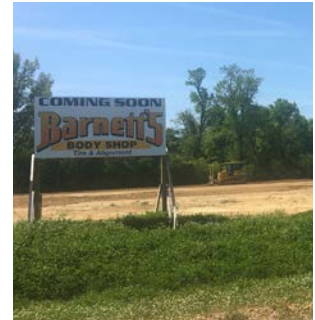
NON-MOTORIZED SERIOUS INJURIES						
	2012	2013	2014	2015	2016	5-year Avg.
Mississippi	49	47	47	42	61	49.2
Jackson MPO	7	6	9	7	9	7.6

CMDC BULLETIN

Ms. Wanda Cowart, President of the Central Mississippi Development Company, Inc. (CMDC), announced the approval of one (1) new loan.

This loan was for \$2,304,000 of a \$5,760,000 project under the United States Small Business Administration's 504 Loan Program. The proceeds of this loan will partially finance the construction of a 30,000 square foot auto body shop in Gluckstadt, Mississippi. This business will create twenty-five (25) new jobs in the private sector.

CMDC is a commercial lender certified by the U. S. Small Business Administration (SBA) and works with local banks and other financial institutions in providing debt capital for small businesses. CMDC provides fixed rate low interest long term financing for small businesses and saves thousands of dollars in debt service on fixed assets. This type financing removes the problem of variable rate financing on long term assets. Many economic forecasters are certain that interest rates will rise. These predictable interest rate increases will not negatively impact the cash flow of those small businesses that have fixed rate low interest loans through the U. S. Small Business Administration's (SBA) 504 Loan Program. The most recent fixed interest rates under this loan program were:



Also, CMDC serves as the Loan Review Board for the Central Mississippi Planning and Development District's (CMPDD's) Minority Business Enterprise Loan Program (MBELP). The MBELP receives its funding from the Mississippi Development Authority (MDA). The interest rate on loans made through this program to a minority owned business is currently 4.25% per annum. The term of a loan can be up to 15 years depending on the use of the loan proceeds (commercial buildings, equipment, inventory, working capital, etc.)

Ms. Cowart invites bankers, commercial loan officers, business owners, real estate developers, and general contractors, to contact Larry Anderson or Dwayne Perkins at 981-1625, or visit our website at cmpdd.org. See the tab labeled "Small Business Assistance."

SBA 504 Loan Program Interest Rates

<u>TERM (YEARS)</u>	<u>INTEREST RATE</u>
10 (April 2018)	5.11%
20 (April 2018)	5.03%

Clinton Comprehensive Plan

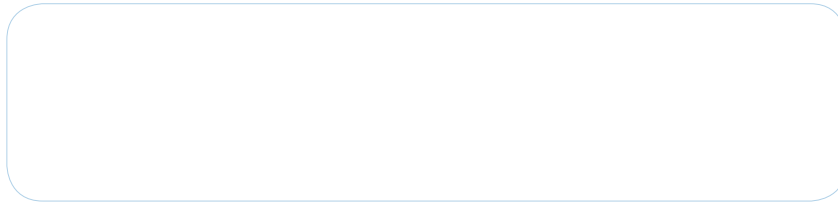
The District recently completed the development of the Clinton Comprehensive Plan. Throughout the development of the Plan, input from citizens and other stakeholders was solicited and considered. During the early stages of the Plan development, an online survey was conducted. The survey contained questions related to why people choose to live in Clinton, options for shopping and recreation, bicycle and pedestrian facilities, and other areas of concern. The public was asked to participate by advertising the survey on the City's website, Facebook page, and by sending an email blast.

In an effort to receive additional input and also reach a broader demographic, the City advertised and held a public meeting where planners utilized interactive polling tools and software. This allowed meeting participants to submit feedback anonymously by using a hand held remote device. The feedback from questions was displayed immediately on screen for all to see and allow for further discussion. The meeting was well attended by both citizens and Clinton leaders. The meeting was also live streamed on Facebook.



In an effort to make the Plan more

accessible to the public, the Plan was developed in an electronic format that integrated an interactive GIS map viewer and could easily be viewed from the City's website. It is anticipated that the new Plan will be adopted following an additional public hearing and review period.




If the name and address of the recipient needs to be updated, please contact our office at 601-981-1511.

Area Agency on Aging Works to Promote a Healthy Lifestyle and Provide Free Eye Screenings

On Tuesday, May 15, 2018, Central Mississippi Planning and Development District/Area Agency on Aging will present “Seniors Grooving to a Healthy Lifestyle.” The Senior Health Fair and 2K Walk will be held at the Mississippi Trademart. A variety of health care professionals and vendors will be in attendance to conduct blood pressure checks and to distribute information on healthy living. Participants will enjoy line dancing, healthy snacks, and door prizes. On Tuesday, June 12, 2018, Central Mississippi Planning and Development District/Area Agency on Aging in col-

laboration with the Lion’s Club of Mississippi will host Free Eye Screenings at the Jackson Medical Mall in the Community Room. This event will benefit seniors who lack the resources to cover fees for a routine eye screening or need assistance in purchasing prescription

eyeglasses. In order to participate seniors must be 60 years of age or older and screenings should last no longer than one minute. For more information on either event, please contact Aging Program Director, Dr. Chelsea B. Crittle at 601-981-1516.



Central Mississippi Planning & Development District / Area Agency on Aging
HEALTH FAIR
May 15, 2018 | 10:00 am – 1:00 pm | Mississippi Trademart
2K WALK | 9:00 am - 10:00 am
SENIORS GROOVING TO A HEALTHY LIFESTYLE!

CMPDD BOARD OF DIRECTORS

Cobie Collins,
President

Les Childress,
Vice-President

Isla Tullos,
Secretary-Treasurer

James Archer,
Immediate Past President

Michael Monk,
Chief Executive Officer

Volume 33

Number 2



Central Mississippi Planning & Development District / Area Agency on Aging
FREE EYE SCREENINGS
June 12, 2018
9:00 am until 1:00 pm
Jackson Medical Mall
Community Room
EYE SCREENINGS BY THE LION’S CLUB OF MISSISSIPPI