

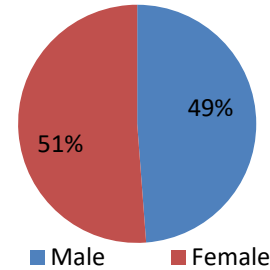


## Population Summary

### Beauregard, MS

Population by Race	Number	Percent	Total Population
Reporting One Race	283	97.90%	2010 326
White	167	57.80%	2020 289
Black	104	36.00%	Annual Rate (%) -1.20%
American Indian	0	0.00%	
Asian	1	0.30%	
Pacific Islander	1	0.30%	
Other Race	10	3.50%	
Reporting Two or More Races	6	2.10%	
Total Hispanic Population	13	4.50%	

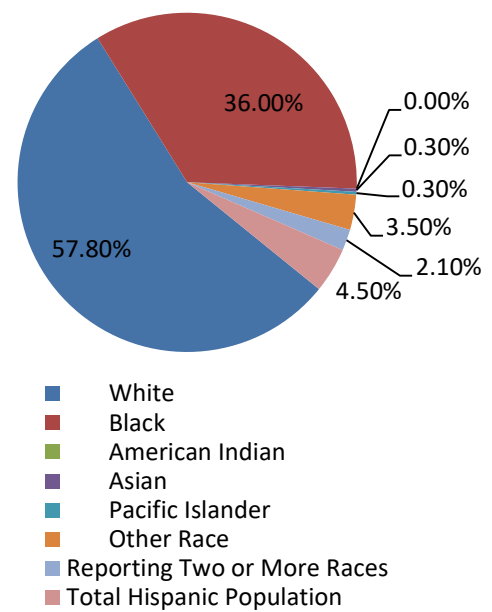
Population by Sex



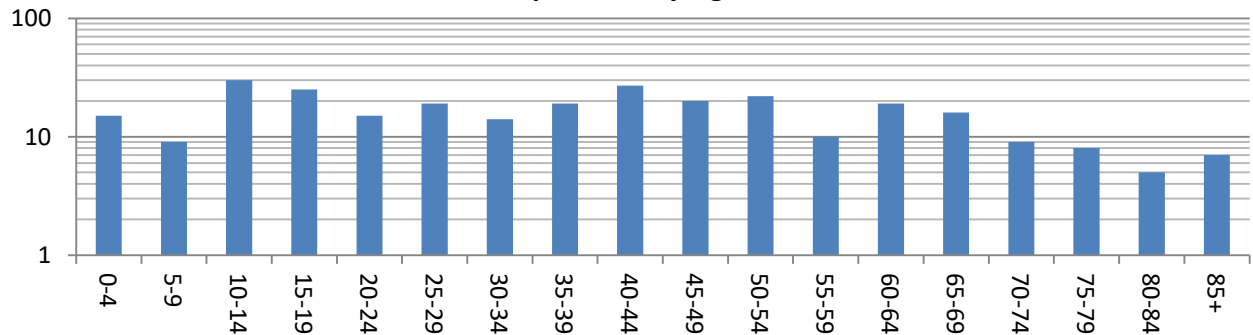
Population by Sex	Number	Percent
Male	141	48.8%
Female	148	51.2%

Population by Age	Number	Percent
0-4	15	5.19%
5-9	9	3.11%
10-14	30	10.38%
15-19	25	8.65%
20-24	15	5.19%
25-29	19	6.57%
30-34	14	4.84%
35-39	19	6.57%
40-44	27	9.34%
45-49	20	6.92%
50-54	22	7.61%
55-59	10	3.46%
60-64	19	6.57%
65-69	16	5.54%
70-74	9	3.11%
75-79	8	2.77%
80-84	5	1.73%
85+	7	2.42%
18+	223	77.16%
65+	45	15.57%

Population by Race



Population by Age



**Data Note:** Hispanic population can be of any race.

**Source:** Esri Census 2020



## Household Summary

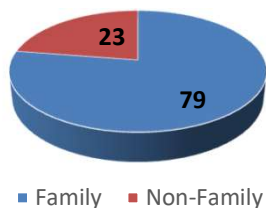
### Beauregard, MS

Households by Type	Number	Percent	Total Households	
Households with 1 Person	15	14.7%	2010	101
Households with 2+ People	25	24.5%	2020	102
Total Households	102	100.0%	Annual Rate (%)	0.10%
Husband-wife Families	50	49.0%	Average Size	2.83
With Own Children	24	23.5%	<b>Households by Size</b> 	
Cohabiting Couples	8	7.8%		
With Own Children	3	2.9%		
Nonfamily Households	23	22.5%		
All Households with Children	35	34.3%		
Unmarried Partner Households	8	7.8%		
Male-female	8	7.8%		
Same-sex	0	0.0%		

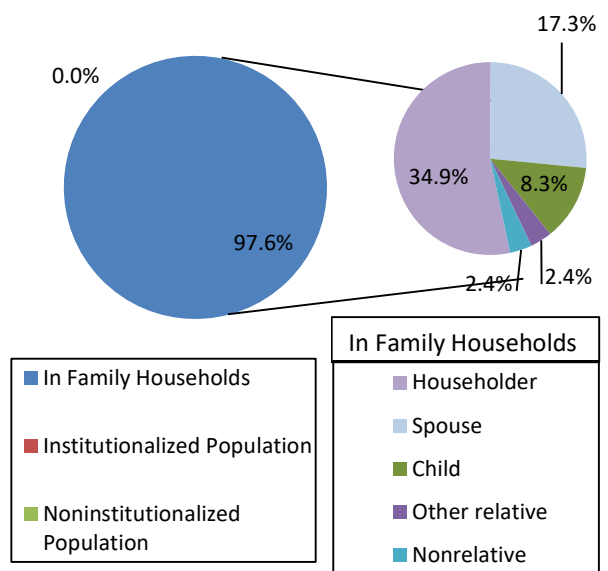
Population by Relationship and Household Type		
Total	289	100.0%
In Households	289	100.0%
In Family Households	282	97.6%
Householder	101	34.9%
Spouse	50	17.3%
Child	24	8.3%
Other relative	7	2.4%
Nonrelative	7	2.4%
In Group Quarters	0	0.0%
Institutionalized Population	0	0.0%
Noninstitutionalized	0	0.0%

Households by Size			Household Type	
Total	102		Total	102
1 Person	15		Family	79
2 People	25		Non-Family	23
3 People	26			
4 People	20			
5 People	8			
6 People	4			
7+ People	4			
Average Size	2.83			

#### Household Type



#### Population by Relationship and



**Data Note:** Households with children include any households with people under age 18, related or not. Unmarried partner households are usually classified as nonfamily households unless there is another member of the household related to the householder. Esri estimated block group data, which is used to estimate polygons or non-standard geography. Average family size excludes nonrelatives.

**Source:** U.S. Census Bureau, Census 2020.



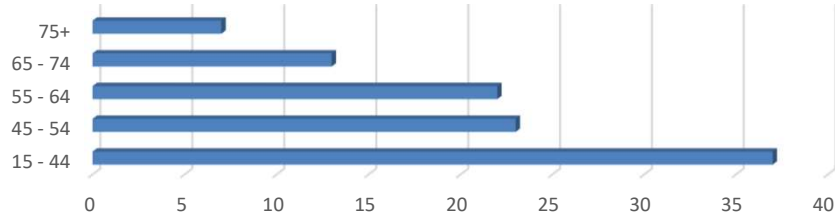
## Householder Summary

### Beauregard, MS

#### Households by Age of Householder

	Number	Percent
Total	102	100.0%
15 - 44	37	36.3%
45 - 54	23	22.5%
55 - 64	22	21.6%
65 - 74	13	12.7%
75+	7	6.9%

#### Households by Age of Householder

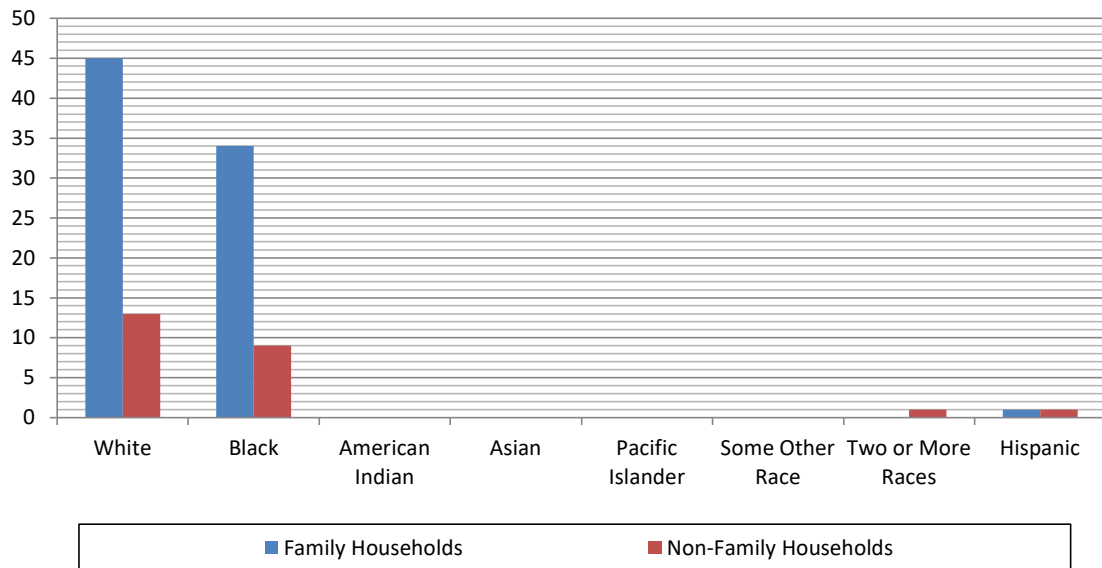


■ Households by Age of Householder Number

#### Summary by Race of Householder

Householder is:	Family Households		Non-Family Households					
	Number	Percent	Number	Percent				
Total	79	100.0%	23	100.0%				
White	45	57.0%	13	56.5%				
Black	34	43.0%	9	39.1%				
American Indian	0	0.0%	0	0.0%				
Asian	0	0.0%	0	0.0%				
Pacific Islander	0	0.0%	0	0.0%				
Some Other Race	0	0.0%	0	0.0%				
Two or More Races	0	0.0%	1	4.3%				
Hispanic	1	1.3%	1	4.3%				

#### Race of Householder



**Data Note:** Hispanic population can be of any race.

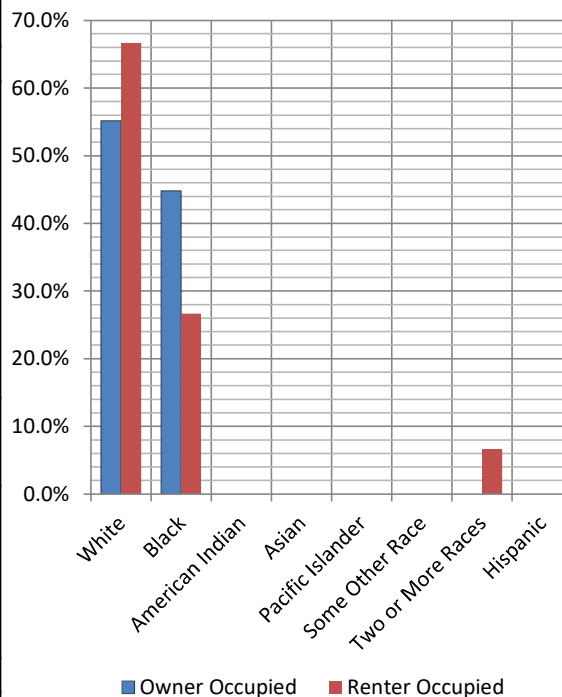
**Source:** U.S. Census Bureau, Census 2020.

## Housing Unit Summary

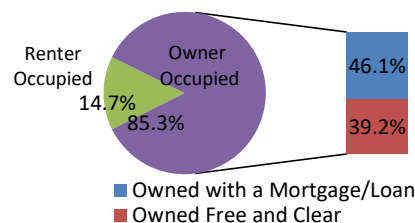
Beauregard, MS

2010		111
2020		108
Annual Rate (%)		-0.27%
Occupancy Status	Number	Percent
Occupied Housing Units	102	94.40%
Vacant Housing Units	6	5.6%
For Rent	0	0.00%
Rented, not Occupied	0	0.00%
For Sale Only	0	0.00%
Sold, not Occupied	0	0.00%
For Seasonal/Recreational/Occasional Use	1	16.70%
For Migrant Workers	0	0.00%
Other Vacant	5	83.30%
Households by Tenure and Mortgage Status		
	Number	Percent
Total	102	100.0%
Owner Occupied	87	85.3%
Owned with a Mortgage/Loan	47	46.1%
Owned Free and Clear	40	39.2%
Renter Occupied	15	14.7%
Housing Units by Race of Householder		
	Number	Percent
Total	87	100.0%
White	48	55.2%
Black	39	44.8%
American Indian	0	0.0%
Asian	0	0.0%
Pacific Islander	0	0.0%
Some Other Race	0	0.0%
Two or More Races	0	0.0%
Hispanic	0	0.0%

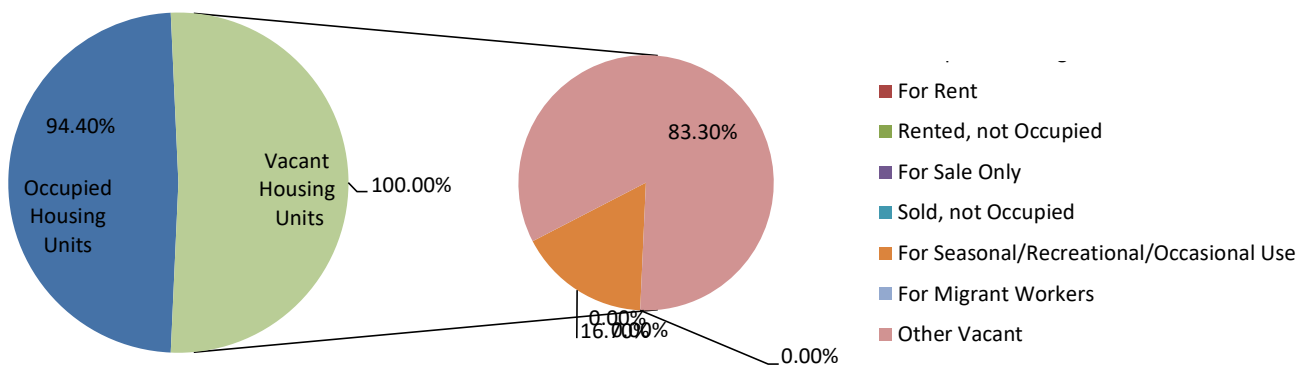
Housing Units by Race of Householder



Households by Tenure and Mortgage Status



Total Housing Units by Occupancy



**Data Note:** Hispanic population can be of any race. Census 2020 medians are computed from reported data distributions.

**Source:** U.S. Census Bureau, Census 2020.

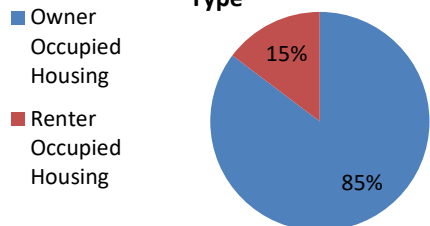


# Demographic and Income Projections

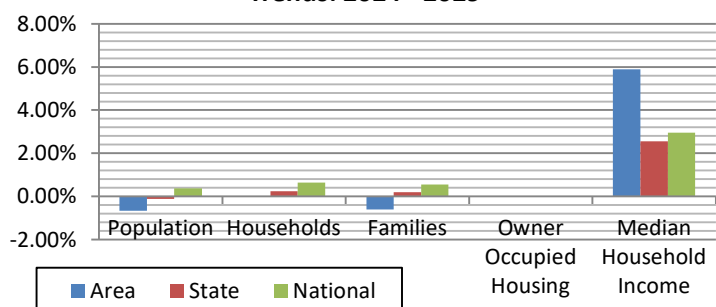
Beauregard, MS

Summary	2020	2024	2029	Trends 2024 - 2029 Rate		
				Area	State	National
Population	289	278	269	-0.66%	-0.10%	0.38%
Households	102	102	102	0.00%	0.24%	0.64%
Families	79	68	66	-0.60%	0.20%	0.56%
Average Household	2.8	2.7	2.6	-	-	-
Owner Occupied Housing	87	83	679	-	-	-
Renter Occupied Housing	15	19	86	-	-	-
Median Age	39.3	32.0	33.5	-	-	-
Median Household Income	-	\$48,590	\$64,706	5.9%	2.6%	3.0%

**Housing Units by Occupancy Type**



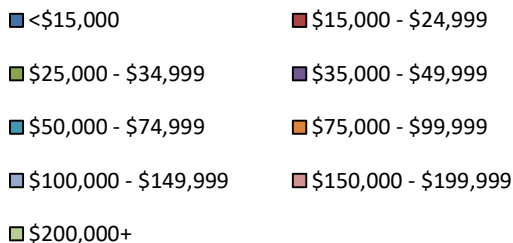
**Trends: 2024 - 2029**



Households by Income	2024		2029	
	Number	Percent	Number	Percent
<\$15,000	18	17.6%	8	7.8%
\$15,000 - \$24,999	7	6.9%	5	4.9%
\$25,000 - \$34,999	13	12.7%	3	2.9%
\$35,000 - \$49,999	14	13.7%	20	19.6%
\$50,000 - \$74,999	17	16.7%	22	21.6%
\$75,000 - \$99,999	8	7.8%	11	10.8%
\$100,000 - \$149,999	14	13.7%	13	12.7%
\$150,000 - \$199,999	8	7.8%	15	14.7%
\$200,000+	3	2.9%	5	4.9%
Median Household Income	\$48,590		\$64,706	
Average Household Income	\$70,788		\$87,695	
Per Capita Income	\$25,973		\$33,253	

**Households by Income**

Inner ring: 2029 projections  
Outer ring: 2024 data



**Data Note:** Income is expressed in current dollars.

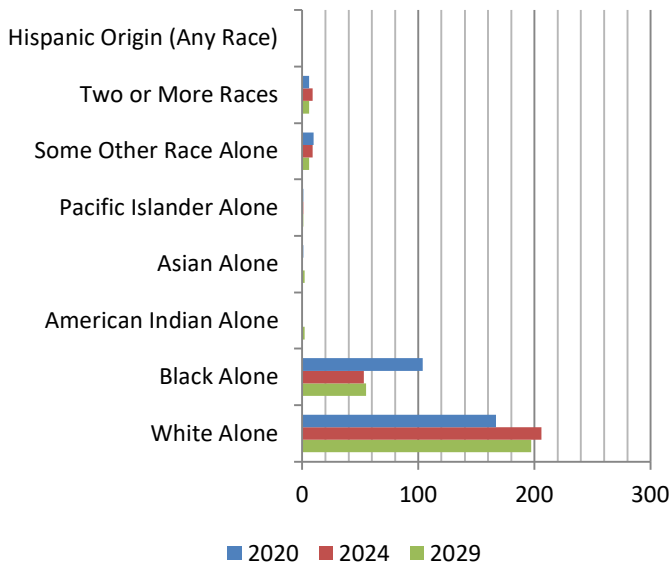
**Source:** U.S. Census Bureau, Census 2020 Data. Esri forecasts for 2024 and 2029.



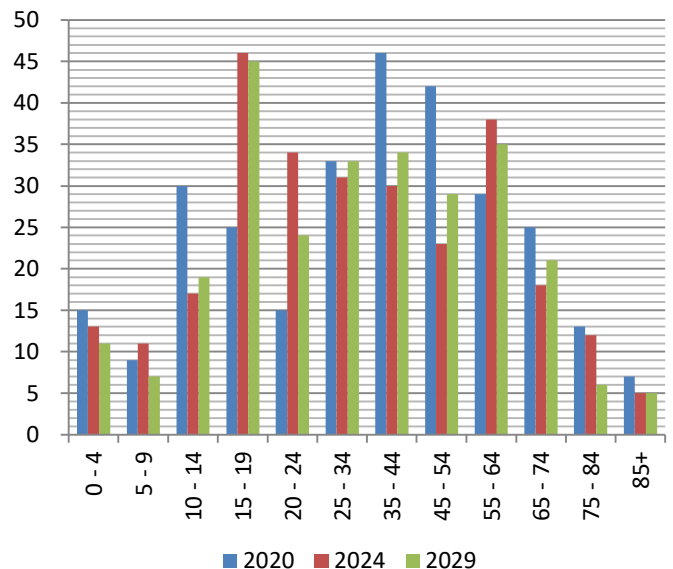
## Population Summary and Projections Beauregard, MS

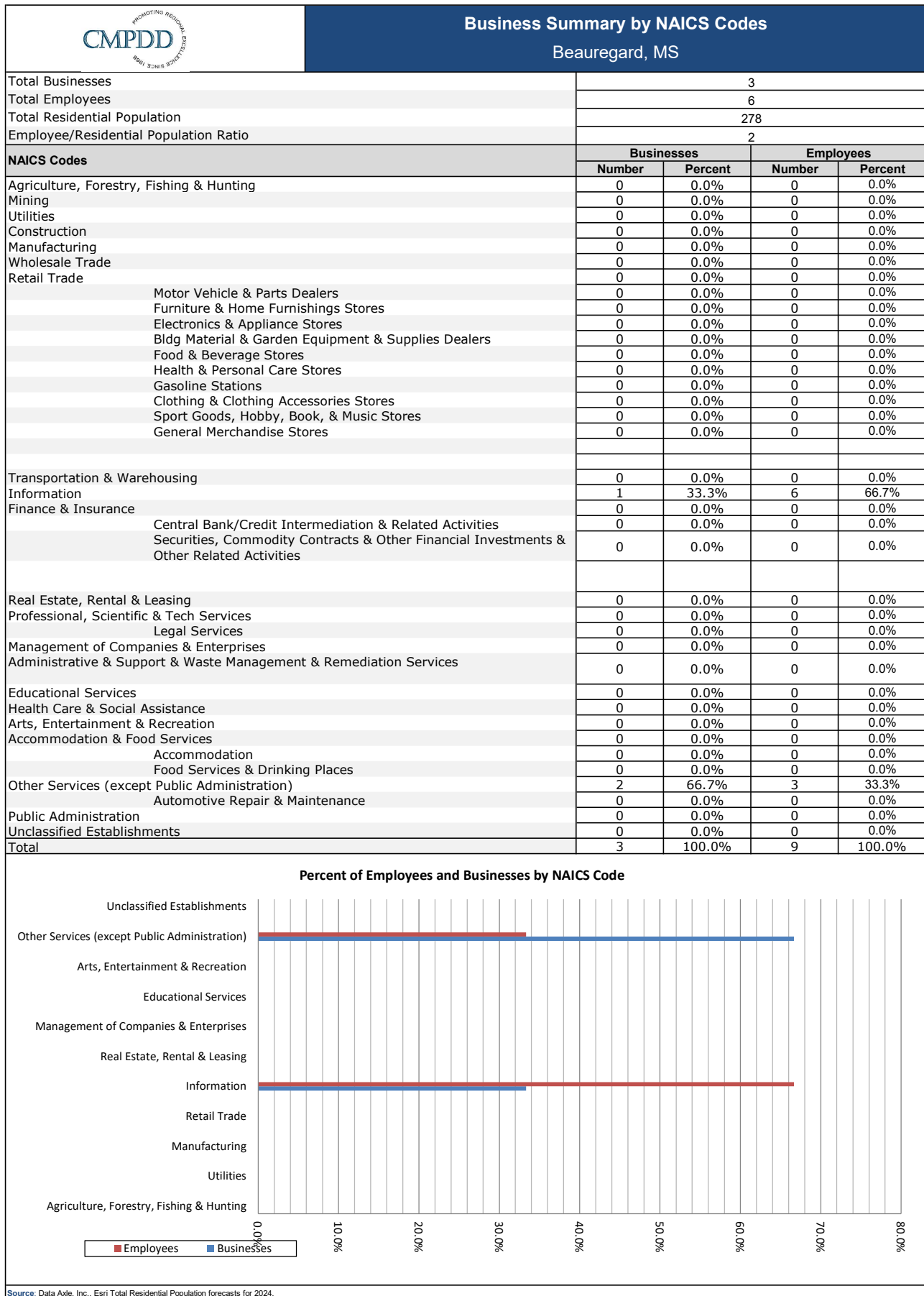
Population	2020		2024		2029	
	289		278		269	
Population by Age	Number	Percent	Number	Percent	Number	Percent
0 - 4	15	5.2%	13	4.7%	11	4.1%
5 - 9	9	3.1%	11	4.0%	7	2.6%
10 - 14	30	10.4%	17	6.1%	19	7.1%
15 - 19	25	8.7%	46	16.5%	45	16.7%
20 - 24	15	5.2%	34	12.2%	24	8.9%
25 - 34	33	11.4%	31	11.2%	33	12.3%
35 - 44	46	15.9%	30	10.8%	34	12.6%
45 - 54	42	14.5%	23	8.3%	29	10.8%
55 - 64	29	10.0%	38	13.7%	35	13.0%
65 - 74	25	8.7%	18	6.5%	21	7.8%
75 - 84	13	4.5%	12	4.3%	6	2.2%
85+	7	2.4%	5	1.8%	5	1.9%
Race and Ethnicity	Number	Percent	Number	Percent	Number	Percent
White Alone	167	57.8%	206	74.1%	197	73.2%
Black Alone	104	36.0%	53	19.1%	55	20.4%
American Indian Alone	0	0.0%	0	0.0%	2	0.7%
Asian Alone	1	0.3%	0	0.0%	2	0.7%
Pacific Islander Alone	1	0.3%	1	0.4%	1	0.4%
Some Other Race Alone	10	3.5%	9	3.2%	6	2.2%
Two or More Races	6	2.1%	9	3.2%	6	2.2%
Hispanic Origin (Any Race)	0	0.0%	0	0.0%	0	0.0%

**Race and Ethnicity**



**Population by Age**









## Business Summary by SIC Codes

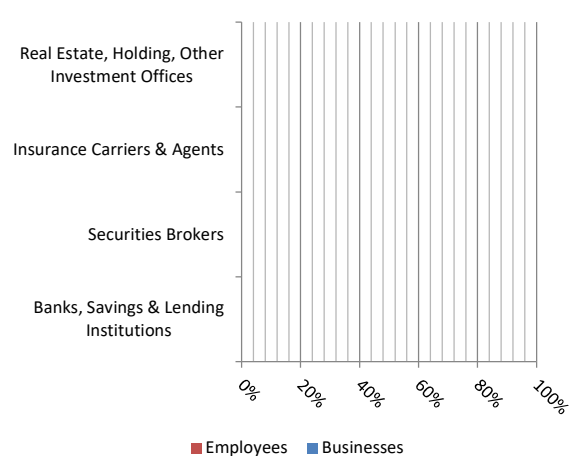
Beauregard, MS

Total Businesses	3			
Total Employees	6			
Total Residential Population	278			
Employee/Residential Pop Ratio (per 100 residents)	2			
SIC Codes	Businesses		Employees	
	Number	Percent	Number	Percent
Agriculture & Mining	0	0%	0	0%
Construction	0	0%	0	0%
Manufacturing	0	0%	0	0%
Transportation	0	0%	0	0%
Communication	1	33%	3	50%
Utility	0	0%	0	0%
Wholesale Trade	0	0%	0	0%
Retail Trade Summary	0	0%	0	0%
Home Improvement	0	0%	0	0%
General Merchandise Stores	0	0%	0	0%
Food Stores	0	0%	0	0%
Auto Dealers, Gas Stations, Auto Aftermarket	0	0%	0	0%
Apparel & Accessory Stores	0	0%	0	0%
Furniture & Home Furnishings	0	0%	0	0%
Eating & Drinking Places	0	0%	0	0%
Miscellaneous Retail	0	0%	0	0%
Finance, Insurance, Real Estate Summary	0	0%	0	0%
Banks, Savings & Lending Institutions	0	0%	0	0%
Securities Brokers	0	0%	0	0%
Insurance Carriers & Agents	0	0%	0	0%
Real Estate, Holding, Other Investment Offices	0	0%	0	0%
Services Summary	2	67%	3	50%
Hotels & Lodging	0	0%	0	0%
Automotive Services	0	0%	0	0%
Movies & Amusements	0	0%	0	0%
Health Services	0	0%	0	0%
Legal Services	0	0%	0	0%
Education Institutions & Libraries	0	0%	0	0%
Other Services	2	67%	3	50%
Government	0	0%	0	0%
Unclassified Establishments	0	0%	0	0%
Total	3	100.0%	6	100.0%

Retail Trade Summary



Finance, Insurance, Real Estate Summary



Services Summary

