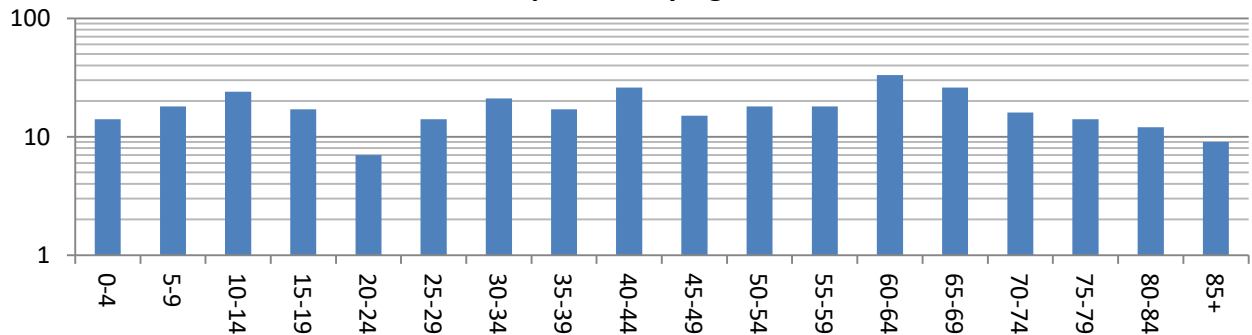




Population Summary Benton, MS

Population by Race	Number	Percent	Total Population
Reporting One Race	294	92.20%	2010 440
White	201	63.00%	2020 319
Black	92	28.80%	Annual Rate (%) -3.16%
American Indian	0	0.00%	
Asian	1	0.30%	
Pacific Islander	0	0.00%	
Other Race	0	0.00%	
Reporting Two or More Races	25	7.80%	
Total Hispanic Population	0	0.00%	
Population by Sex <p>■ Male ■ Female</p>			
Male	151	47.3%	
Female	168	52.7%	
Population by Age <p>■ White ■ Black ■ American Indian ■ Asian ■ Pacific Islander ■ Other Race ■ Reporting Two or More Races ■ Total Hispanic Population</p>			
0-4	14	4.39%	
5-9	18	5.64%	
10-14	24	7.52%	
15-19	17	5.33%	
20-24	7	2.19%	
25-29	14	4.39%	
30-34	21	6.58%	
35-39	17	5.33%	
40-44	26	8.15%	
45-49	15	4.70%	
50-54	18	5.64%	
55-59	18	5.64%	
60-64	33	10.34%	
65-69	26	8.15%	
70-74	16	5.02%	
75-79	14	4.39%	
80-84	12	3.76%	
85+	9	2.82%	
18+	252	79.00%	
65+	77	24.14%	

Population by Age



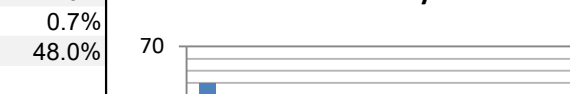
Data Note: Hispanic population can be of any race.

Source: Esri Census 2020



Household Summary

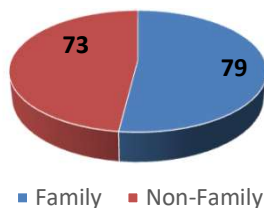
Benton, MS

Households by Type	Number	Percent	Total Households																	
Households with 1 Person	64	42.1%	2010	173																
Households with 2+ People	31	20.4%	2020	152																
Total Households	152	100.0%	Annual Rate (%)	-1.29%																
Husband-wife Families	42	27.6%	Average Size	2.10																
With Own Children	15	9.9%	<div>Households by Size</div>  <table><caption>Households by Size Data</caption><thead><tr><th>Household Size</th><th>Count</th></tr></thead><tbody><tr><td>1 Person</td><td>64</td></tr><tr><td>2 People</td><td>31</td></tr><tr><td>3 People</td><td>20</td></tr><tr><td>4 People</td><td>15</td></tr><tr><td>5 People</td><td>8</td></tr><tr><td>6 People</td><td>10</td></tr><tr><td>7+ People</td><td>4</td></tr></tbody></table>		Household Size	Count	1 Person	64	2 People	31	3 People	20	4 People	15	5 People	8	6 People	10	7+ People	4
Household Size	Count																			
1 Person	64																			
2 People	31																			
3 People	20																			
4 People	15																			
5 People	8																			
6 People	10																			
7+ People	4																			
Cohabiting Couples	2	1.3%																		
With Own Children	1	0.7%																		
Nonfamily Households	73	48.0%																		
All Households with Children	27	17.8%																		
Unmarried Partner Households	2	1.3%																		
Male-female	3	2.0%																		
Same-sex	1	0.7%																		

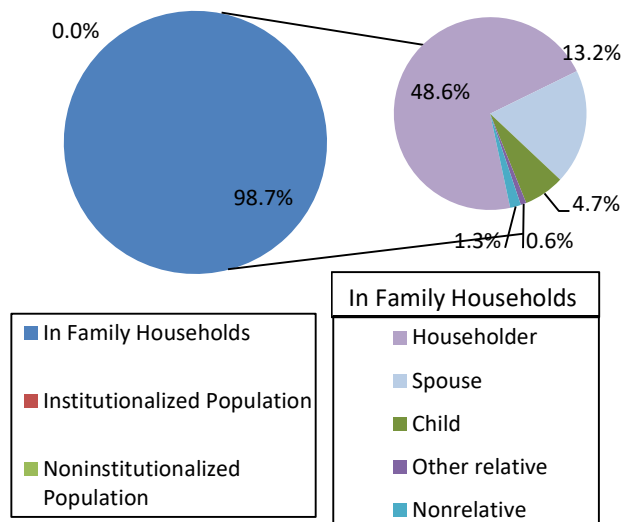
Population by Relationship and Household Type		
Total	319	100.0%
In Households	319	100.0%
In Family Households	315	98.7%
Householder	155	48.6%
Spouse	42	13.2%
Child	15	4.7%
Other relative	2	0.6%
Nonrelative	4	1.3%
In Group Quarters	0	0.0%
Institutionalized Population	0	0.0%
Noninstitutionalized	0	0.0%

Households by Size			Household Type	
Total	152		Total	152
1 Person	64		Family	79
2 People	31		Non-Family	73
3 People	20			
4 People	15			
5 People	8			
6 People	10			
7+ People	4			
Average Size	2.10			

Household Type



Population by Relationship and



Data Note: Households with children include any households with people under age 18, related or not. Unmarried partner households are usually classified as nonfamily households unless there is another member of the household related to the householder. Esri estimated block group data, which is used to estimate polygons or non-standard geography. Average family size excludes nonrelatives.

Source: U.S. Census Bureau, Census 2020.



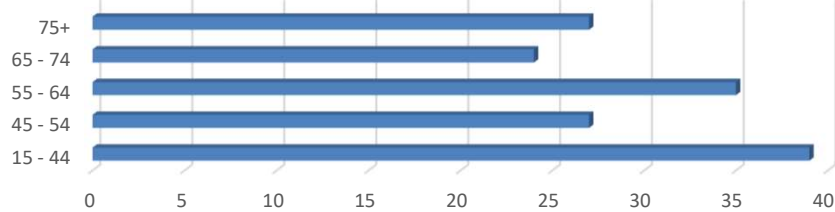
Householder Summary

Benton, MS

Households by Age of Householder

	Number	Percent
Total	152	100.0%
15 - 44	39	25.7%
45 - 54	27	17.8%
55 - 64	35	23.0%
65 - 74	24	15.8%
75+	27	17.8%

Households by Age of Householder

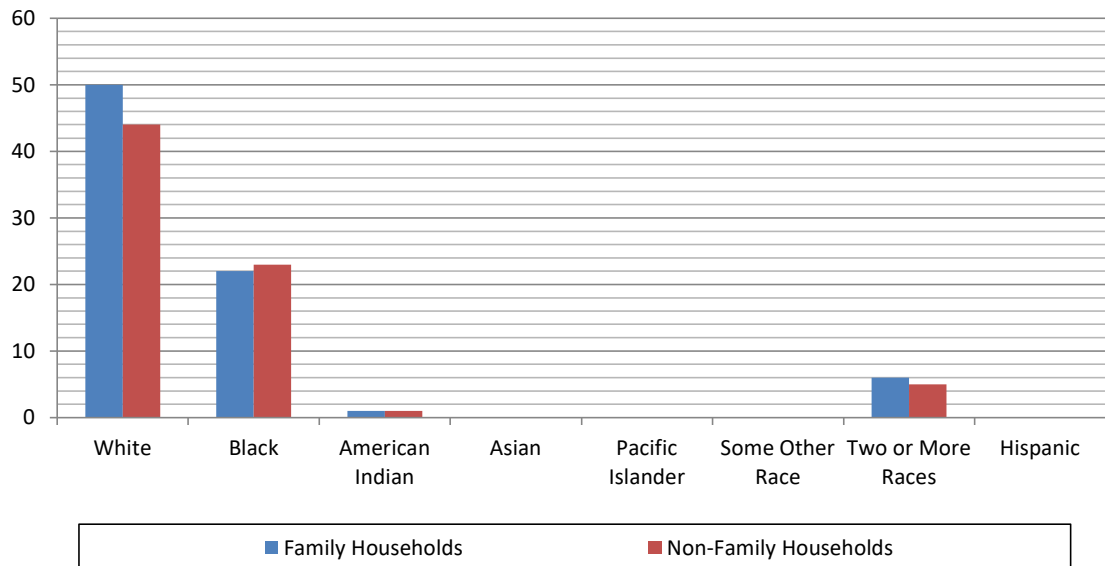


■ Households by Age of Householder Number

Summary by Race of Householder

Householder is:	Family Households		Non-Family Households					
	Number	Percent	Number	Percent				
Total	79	100.0%	73	100.0%				
White	50	63.3%	44	60.3%				
Black	22	27.8%	23	31.5%				
American Indian	1	1.3%	1	1.4%				
Asian	0	0.0%	0	0.0%				
Pacific Islander	0	0.0%	0	0.0%				
Some Other Race	0	0.0%	0	0.0%				
Two or More Races	6	7.6%	5	6.8%				
Hispanic	0	0.0%	0	0.0%				

Race of Householder



Data Note: Hispanic population can be of any race.

Source: U.S. Census Bureau, Census 2020.

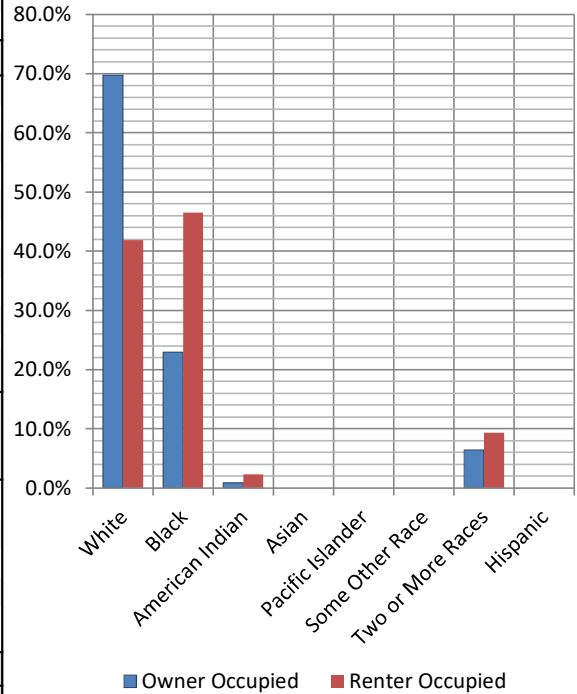


Housing Unit Summary

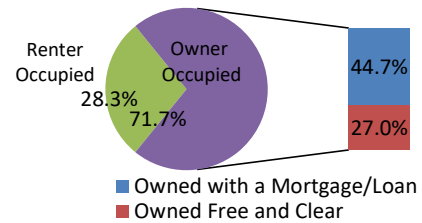
Benton, MS

2010		195		
2020		173		
Annual Rate (%)		-1.19%		
Occupancy Status		Number	Percent	
Occupied Housing Units		152	87.90%	
Vacant Housing Units		21	12.1%	
For Rent		1	4.80%	
Rented, not Occupied		0	0.00%	
For Sale Only		2	9.50%	
Sold, not Occupied		1	4.80%	
For Seasonal/Recreational/Occasional Use		1	4.80%	
For Migrant Workers		0	0.00%	
Other Vacant		16	76.20%	
Households by Tenure and Mortgage Status		Number	Percent	
Total		152	100.0%	
Owner Occupied		109	71.7%	
Owned with a Mortgage/Loan		68	44.7%	
Owned Free and Clear		41	27.0%	
Renter Occupied		43	28.3%	
Housing Units by Race of Householder	Owner Occupied		Renter Occupied	
	Number	Percent	Number	Percent
Total	109	100.0%	43	100.0%
White	76	69.7%	18	41.9%
Black	25	22.9%	20	46.5%
American Indian	1	0.9%	1	2.3%
Asian	0	0.0%	0	0.0%
Pacific Islander	0	0.0%	0	0.0%
Some Other Race	0	0.0%	0	0.0%
Two or More Races	7	6.4%	4	9.3%
Hispanic	0	0.0%	0	0.0%

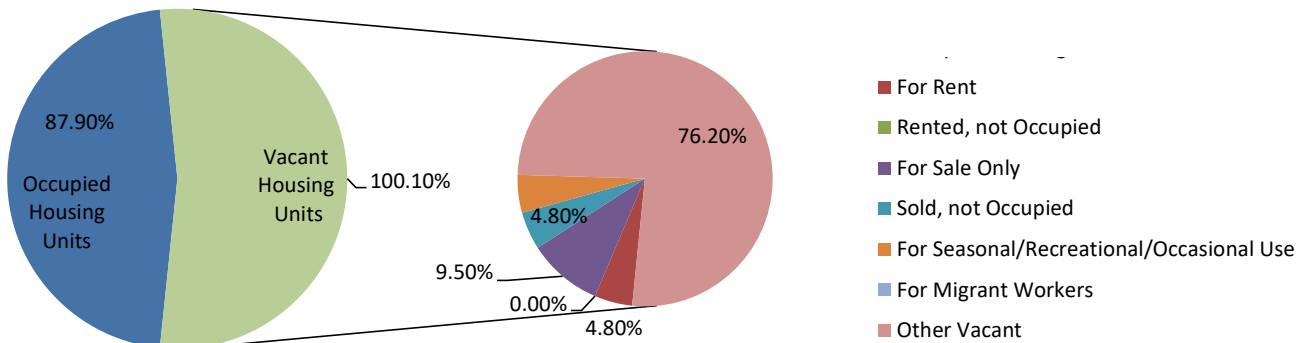
Housing Units by Race of Householder



Households by Tenure and Mortgage Status



Total Housing Units by Occupancy



Data Note: Hispanic population can be of any race. Census 2020 medians are computed from reported data distributions.
Source: U.S. Census Bureau, Census 2020.

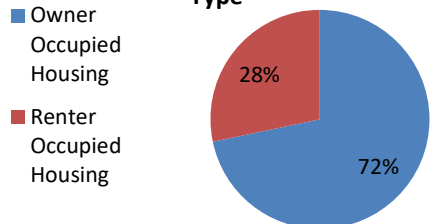


Demographic and Income Projections

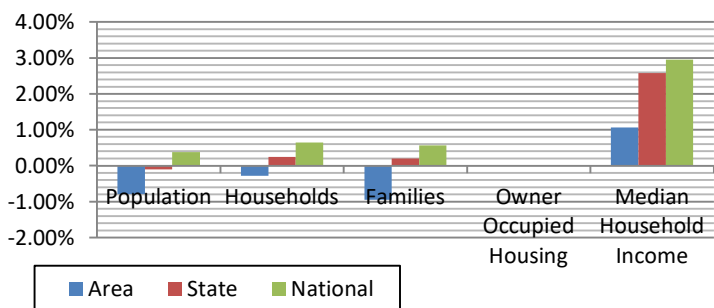
Benton, MS

Summary	2020	2024	2029	Trends 2024 - 2029 Rate		
				Area	State	National
Population	319	308	296	-0.79%	-0.10%	0.38%
Households	152	146	144	-0.28%	0.24%	0.64%
Families	79	86	82	-0.95%	0.20%	0.56%
Average Household	2.1	2.1	2.1	-	-	-
Owner Occupied Housing	109	124	679	-	-	-
Renter Occupied Housing	43	22	121	-	-	-
Median Age	46.1	48.2	47.0	-	-	-
Median Household Income	-	\$24,321	\$25,655	1.1%	2.6%	3.0%

Housing Units by Occupancy Type



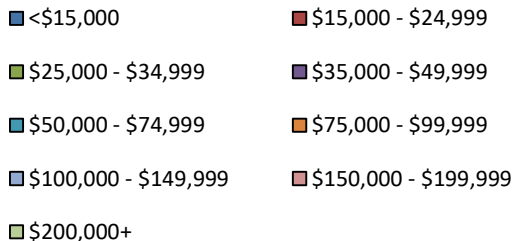
Trends: 2024 - 2029



Households by Income	2024		2029	
	Number	Percent	Number	Percent
<\$15,000	53	34.9%	55	36.2%
\$15,000 - \$24,999	21	13.8%	16	10.5%
\$25,000 - \$34,999	18	11.8%	12	7.9%
\$35,000 - \$49,999	14	9.2%	14	9.2%
\$50,000 - \$74,999	13	8.6%	21	13.8%
\$75,000 - \$99,999	17	11.2%	14	9.2%
\$100,000 - \$149,999	9	5.9%	10	6.6%
\$150,000 - \$199,999	0	0.0%	0	0.0%
\$200,000+	1	0.7%	2	1.3%
Median Household Income	\$24,321		\$25,655	
Average Household Income	\$40,227		\$47,486	
Per Capita Income	\$19,069		\$23,101	

Households by Income

Inner ring: 2029 projections
Outer ring: 2024 data



Data Note: Income is expressed in current dollars.

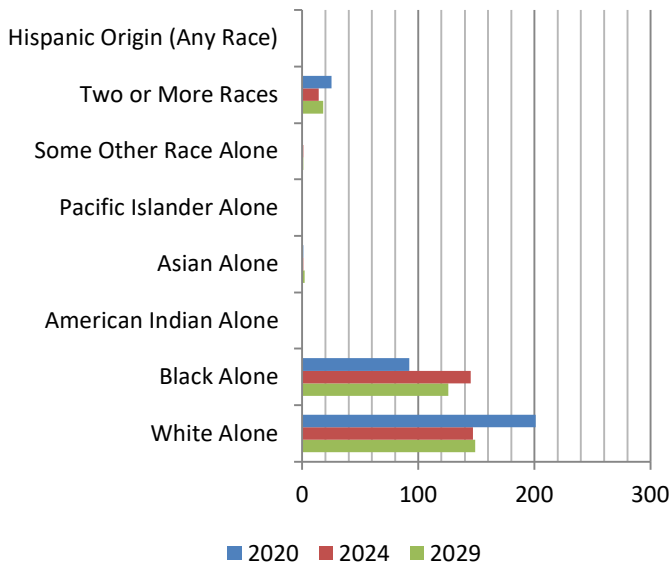
Source: U.S. Census Bureau, Census 2020 Data. Esri forecasts for 2024 and 2029.



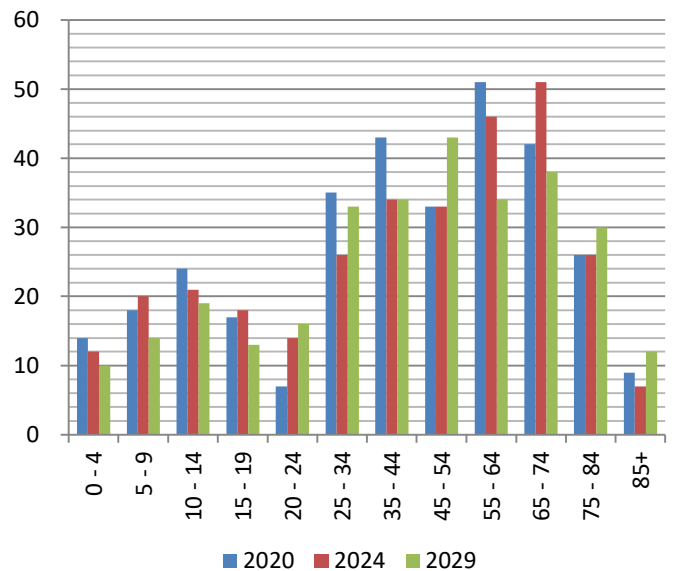
Population Summary and Projections Bentonla, MS

Population	2020		2024		2029	
	319		308		296	
Population by Age	Number	Percent	Number	Percent	Number	Percent
0 - 4	14	4.4%	12	3.9%	10	3.4%
5 - 9	18	5.6%	20	6.5%	14	4.7%
10 - 14	24	7.5%	21	6.8%	19	6.4%
15 - 19	17	5.3%	18	5.8%	13	4.4%
20 - 24	7	2.2%	14	4.5%	16	5.4%
25 - 34	35	11.0%	26	8.4%	33	11.1%
35 - 44	43	13.5%	34	11.0%	34	11.5%
45 - 54	33	10.3%	33	10.7%	43	14.5%
55 - 64	51	16.0%	46	14.9%	34	11.5%
65 - 74	42	13.2%	51	16.6%	38	12.8%
75 - 84	26	8.2%	26	8.4%	30	10.1%
85+	9	2.8%	7	2.3%	12	4.1%
Race and Ethnicity	Number	Percent	Number	Percent	Number	Percent
White Alone	201	63.0%	147	47.7%	149	50.3%
Black Alone	92	28.8%	145	47.1%	126	42.6%
American Indian Alone	0	0.0%	0	0.0%	0	0.0%
Asian Alone	1	0.3%	1	0.3%	2	0.7%
Pacific Islander Alone	0	0.0%	0	0.0%	0	0.0%
Some Other Race Alone	0	0.0%	1	0.3%	1	0.3%
Two or More Races	25	7.8%	14	4.5%	18	6.1%
Hispanic Origin (Any Race)	0	0.0%	0	0.0%	0	0.0%

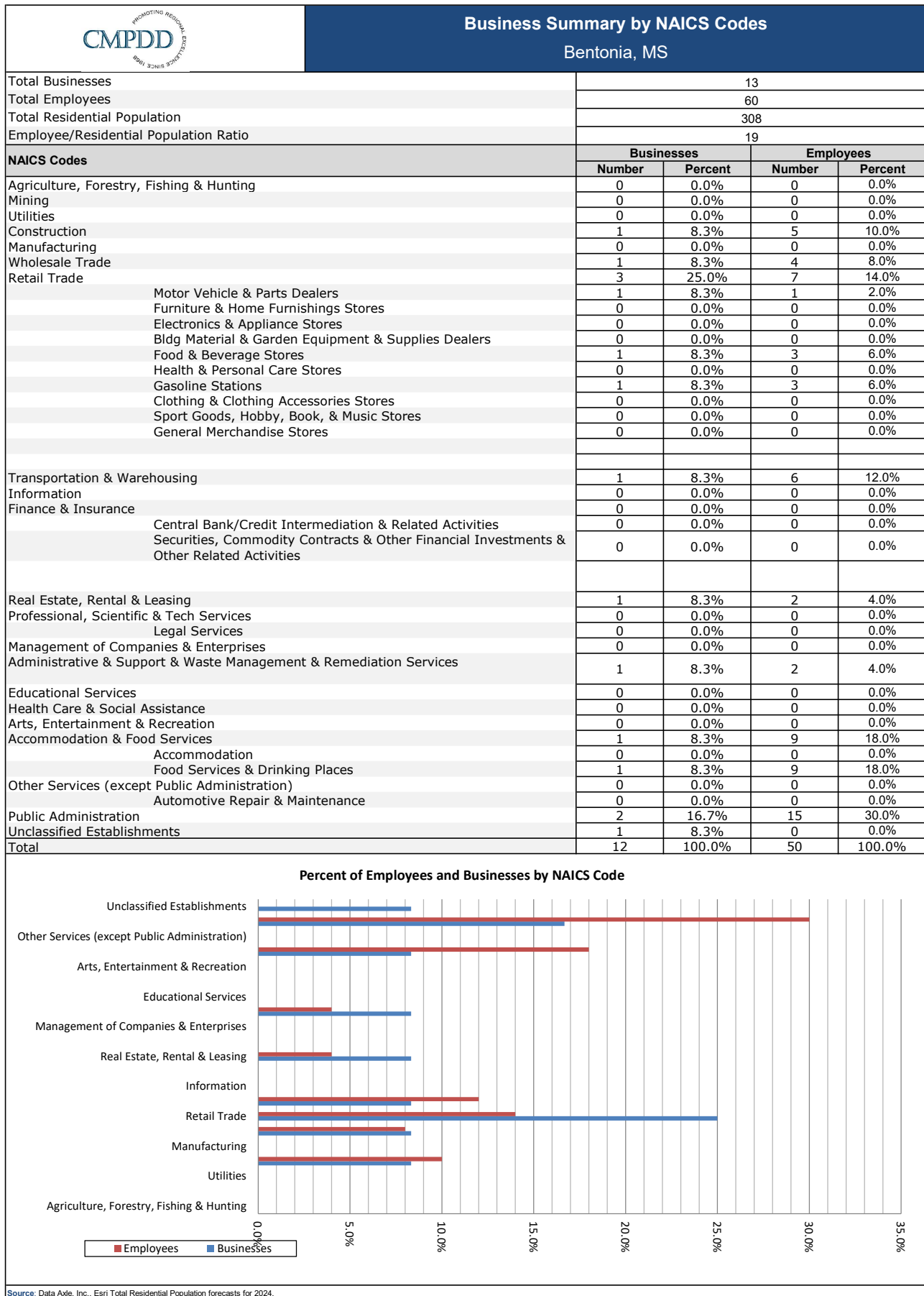
Race and Ethnicity



Population by Age



Source: U.S. Census Bureau, Census 2020 Data. Esri forecasts for 2024 and 2029.



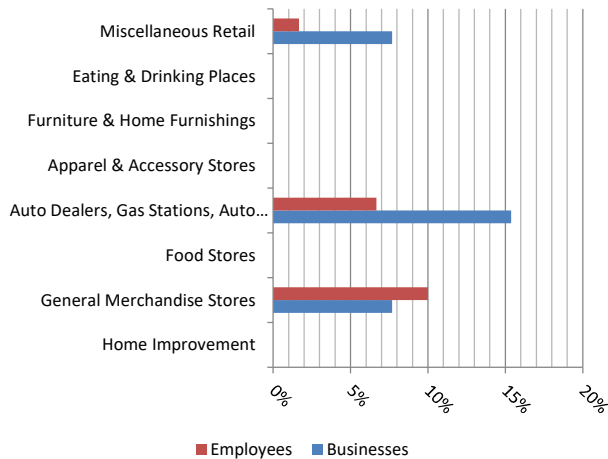


Business Summary by SIC Codes

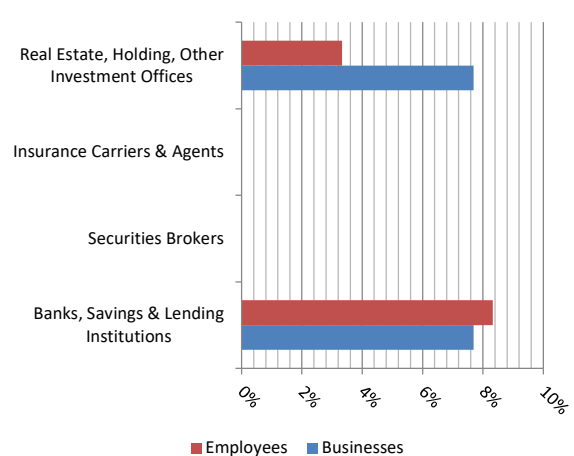
Bentonla, MS

Total Businesses	13			
Total Employees	60			
Total Residential Population	308			
Employee/Residential Pop Ratio (per 100 residents)	19			
SIC Codes	Businesses		Employees	
	Number	Percent	Number	Percent
Agriculture & Mining	0	0%	0	0%
Construction	1	8%	10	17%
Manufacturing	0	0%	0	0%
Transportation	1	8%	6	10%
Communication	0	0%	0	0%
Utility	0	0%	0	0%
Wholesale Trade	1	8%	4	7%
Retail Trade Summary	4	31%	11	18%
Home Improvement	0	0%	0	0%
General Merchandise Stores	1	8%	6	10%
Food Stores	0	0%	0	0%
Auto Dealers, Gas Stations, Auto Aftermarket	2	15%	4	7%
Apparel & Accessory Stores	0	0%	0	0%
Furniture & Home Furnishings	0	0%	0	0%
Eating & Drinking Places	0	0%	0	0%
Miscellaneous Retail	1	8%	1	2%
Finance, Insurance, Real Estate Summary	2	15%	7	12%
Banks, Savings & Lending Institutions	1	8%	5	8%
Securities Brokers	0	0%	0	0%
Insurance Carriers & Agents	0	0%	0	0%
Real Estate, Holding, Other Investment Offices	1	8%	2	3%
Services Summary	1	8%	4	7%
Hotels & Lodging	0	0%	0	0%
Automotive Services	0	0%	0	0%
Movies & Amusements	0	0%	0	0%
Health Services	0	0%	0	0%
Legal Services	0	0%	0	0%
Education Institutions & Libraries	0	0%	0	0%
Other Services	1	8%	4	7%
Government	2	15%	18	30%
Unclassified Establishments	1	8%	0	30%
Total	13	100.0%	60	100.0%

Retail Trade Summary



Finance, Insurance, Real Estate Summary



Services Summary

