

T. Larry Anderson Announces Retirement from CMPDD



After 48 years of service to the District, Larry Anderson has announced his retirement as Director of Human Services effective June 30, 2018. According to Mike Monk, CEO, "Larry has dedicated almost his entire professional career to CMPDD, which was founded only two (2) years prior to his start." To honor Larry's retirement, the District hosted a retirement reception at the Mississippi Sports Hall of Fame on June 28th, to allow family, co-workers, and others to show their appreciation. We wish Larry much happiness in his retirement and thank him for his hard work, loyalty, and leadership.



CMPDD Elects New Officers

At the June Meeting, the CMPDD Board of Directors elected Flora Mayor Les Childress to serve as President for a two (2) year term. Also elected were Raymond Mayor Isla Tullos as Vice President and Warren County Supervisor William Banks as Secretary-Treasurer. Former President Yazoo County Supervisor Cobie Collins now becomes Immediate Past President and continues to serve on both the Steering Committee and the Board of Directors.

On behalf of the Board, New President Les Childress thanked Mr. Collins for his dedication to the District. Mr. Collins thanked the Board for the opportunity and stated it was a pleasure and an honor to serve as the Board President.



Mayor Les Childress (President) presenting Supervisor Cobie Collins (Immediate Past President) with a plaque to thank him for his service as President.

Comment Period Begins for the Transportation Improvement Program (TIP) for Fiscal Years 2019 through 2022

One of the responsibilities of the Jackson Metropolitan Planning Organization (MPO) in carrying out the Federally-mandated transportation planning process is to prepare and maintain a Transportation Improvement Program (TIP) document. The TIP is a financially constrained four-year program for addressing short-term transportation priorities that are consistent with the Jackson Urbanized Area's Long-Range Transportation Plan. The TIP allocates the limited Federal transportation resources available among the various capital and operating needs of the area, based upon developed priorities. The TIP is required to be updated at least every four years, and MPO staff recently completed the development of the draft Jackson Urbanized Area's TIP for fiscal years 2019 - 2022. In accordance with the MPO's Public Participation Plan, the MPO will be conducting a series of public involvement activities to gather feedback regarding the draft 2019 - 2022 TIP document. Public involvement activities include:

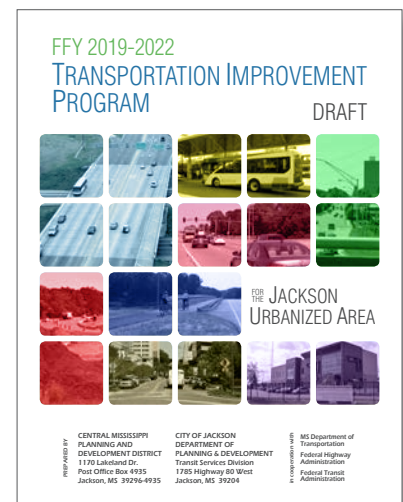
- A 45-day Public Comment Period which began June 15, 2018 and concludes July 31, 2018, at 5 p.m.
- A series of public meetings will be held. MPO staff will be present during the public meetings to discuss the draft TIP document and receive comments during each "come and go" style meeting. The public meetings will take place from 4:00 p.m. to 6:00 p.m. at the following locations:
 - Hinds County: Tuesday, July 24, 2018
CMPDD main office, 1170 Lakeland Drive, Jackson, MS
 - Madison County: Wednesday, July 25, 2018
Madison County Administrative Building, 125 W. North Street Canton, MS
 - Rankin County: Thursday, July 26, 2018
Rankin County Courthouse Annex, Board Room, 211 E. Government Street Brandon, MS
- Finally, a public meeting will be held in conjunction with a meeting of the Intermodal Technical Committee on Wednesday, August 1, 2018 at 11:00 a.m. at CMPDD's main office.

Prior to the public meetings, copies of the draft plan are available for review at CMPDD during normal business hours, or online any time at www.cmpdd.org/public-notice/. During the review period comments may be submitted using one of the methods listed below.

WAYS TO PROVIDE YOUR COMMENTS:

- Use the Transportation Comments link provided on CMPDD's website: www.cmpdd.org/public-notice/
- Email MPO Staff: mpo@cmpdd.org
- Mail written comments received by July 31, 2018 to Post Office Box 4935 Jackson, MS 39296-4935
- Deliver comments in person during the Intermodal Technical Committee meeting
- Complete a comment card provided at one of the public meetings or at CMPDD's office

MPO Committee members will review all comments received and consider approval of the proposed 2019 - 2022 TIP during its regularly scheduled August meeting. Transportation stakeholders and other interested individuals are encouraged to review the proposed document and to provide comments. For additional information please contact MPO staff at 601-981-1511 or by email at mpo@cmpdd.org.

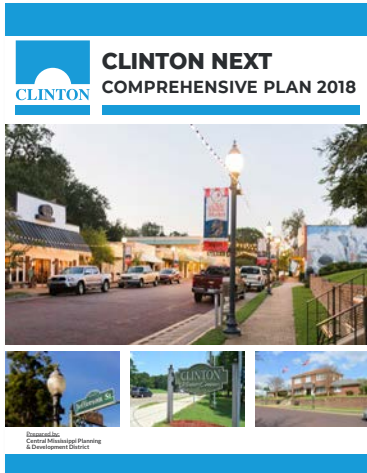


LUCA

In July of 2018 the District completed the Local Update of Census Addresses (LUCA) review for the town of Flora, MS. The District has been a Census partner for LUCA training and was well equipped to be the LUCA liaison for the town of Flora. CMPDD used the mapping software provided by Census to review and update the information. The purpose of LUCA is to validate, correct, and add any missing addresses for the town prior to the

2020 Census. When the Census is conducted the count will be as accurate as possible. Although participation is not required, many local governments all across the state of Mississippi have been responding to LUCA to ensure accurate information is collected for their area during the 2020 Census. If you would like to know more about LUCA please contact the District's Regional Data Analyst at jwadsworth@cmpdd.org.

Clinton Comprehensive Plan



The new Clinton Comprehensive Plan (Clinton Next) has been released for public review and comments. In an effort to make the Plan more accessible to the public, this Plan was developed in an electronic format called Story Map. This integrates an interactive GIS map viewer and can easily be viewed from the City's website. Throughout

the development of the Plan, feedback and input from citizens and other stakeholders was solicited and considered. Outreach tools included the use of online surveys, social media, and a town-hall style meeting. It is anticipated that the new Plan will be adopted following the final public hearing scheduled for mid-July.

City Clerks Meeting

CMPDD recently hosted a luncheon/meeting for the City Clerks in the Central Mississippi Planning and Development District. The Clerks shared best practices with each other and discussed issues that directly affect their jobs. We are very happy to facilitate meetings such as this because increased efficiency greatly benefits our participating governments and those they represent.

Hinds County Completes CDBG Courthouse Renovations

Hinds County recently completed Americans with Disabilities Act (ADA) renovations to the Courthouse in Raymond using Community Development Block Grant (CDBG) funds. With the assistance of a



2015 CDBG Public Facilities grant in the amount of \$227,688.00, the County was able to renovate portions of the Courthouse to address ADA accessibility issues. The Hinds County Courthouse in Raymond, MS was built in 1857 and is celebrated as one of the state's finest Greek Revival public buildings. The Courthouse has also been rated by National Archives of History as one of the ten most perfectly constructed buildings in the Greek Revival Style in the United States.

The Courthouse was in need of an update to bring the facility into compliance with the Americans with Disabilities Act of 1992. On the exterior of the Courthouse, improvements include ADA signage, additional handicap parking, reconstructed sidewalks and curbs, and new ramps and rails leading into the Courthouse. Improvements made to the interior of the Courthouse include, new signage to common areas, installation of an assistive listening system, and renovations to restrooms.

CMPDD assisted Hinds County with the submission of the CDBG application and also provided administrative services throughout the construction process. For additional information on the CDBG program, please contact Mitzi Stubbs or Jason Larry, 601-981-1511.

Town of Braxton Honors Mayor Mable Everett

The Town of Braxton honored Mayor Mable Everett with a park dedication and tea on May 16, 2018. Mayor Everett has served the town in one capacity or another since 1969.

The town held the ceremony at the Braxton Community Park's gazebo. Andy Gipson, the state's Commissioner of Agriculture and Commerce, paid tribute to Mayor Everett. Music and refreshments were provided.

After the speakers concluded, the Park's new sign was unveiled, which now reads: "Mayor Mable Everett Park." CMPDD congratulates Mayor Everett on her long service and this well-deserved honor.



Town of Terry Comprehensive Plan

CMPDD is in the process of updating the town's Comprehensive Plan. The demographic study has been completed, including population projections for the year 2040. The community facilities plan chapter is also in progress and will be finished within a month. It will document existing public facilities and evaluate the need for future public improvements.

In addition, District staff completed the existing land use survey. This survey was conducted by a CMPDD team physically riding each road and street in the Terry study area and recording the land uses on a computerized map. The map resulting from this survey will be used to produce the Plan's future land use map, which depicts the proposed makeup of land uses in Terry for the next 20 years.



The remaining task to be completed is a transportation plan element. This will examine the existing transportation and circulation network and project future needs for streets and other modes of transportation. The Transportation Plan will be coordinated with the future Land

Use Plan and the 2040 Metropolitan Transportation Plan. Any changes in the Land Use Plan will be followed by necessary changes in the Zoning Ordinance and Map.

New Forecasting Tools

In preparation for the next update to the Metropolitan Transportation Plan to the forecasted year of 2045, CMPDD has made several software upgrades to assist planners in projecting future transportation needs for the region. One of the fundamental tasks of developing the long-range Metropolitan Transportation Plan is to analyze data in order to visualize what the future will look like for the region.

In May, staff members participated in staff development training for CommunityViz software. CommunityViz is a GIS-based decision support software that helps users view, analyze, and understand land-use alternatives and the impacts of development. Sketch tools in the software let users "paint" land use types on a map and instantly see associated socioeconomic and environmental impacts. In addition, the Build-Out Wizard calculates the development capacity of available land based on defined parameters and allows users to visual see the allocation of future growth. It is anticipated, CMPDD will utilize CommunityViz planning tools to assist with the allocation or build-out of future population and employment growth estimates to the year 2045. The projected growth will then be used in the region's travel demand model to determine future needs for the region's transportation system.

CMPDD has also been in the process of obtaining a new pavement management system software, Deighton Total Infrastructure Management System (dTIMS), to replace the outdated Road Surface Management System (RSMS) currently in use. The dTIMS software aids in the decision making process when determining which functionally classified roadways in the Jackson Metropolitan Planning Area are in the greatest need of repair. Data collected by CMPDD staff is inputted into the dTIMS program and an analysis of that data provides a priority ranking for each roadway. This priority ranking is used by the Jackson Metropolitan Planning Organization (MPO) as one of several assessment criteria in evaluating project applications for Surface Transportation Block Grant (STBG) funding. In addition, dTIMS uses historical pavement management data to determine pavement deterioration trends and provides recommendations for mitigating those trends through the use of multiple roadway maintenance, rehabilitation, and reconstruction treatment options.



Central Mississippi Mayors Association

The Central Mississippi Mayors Association (CMMA) quarterly meeting was held in June, 2018 in Biloxi, MS while the Mayors were there attending the Mississippi Municipal League's Annual Conference.

The CMMA is made up of 34 cities, towns and villages in the Central Mississippi Planning and Development District (CMPDD) and the quarterly meetings are normally held at the CMPDD office. The purpose of these CMMA quarterly meetings is to discuss current issues facing the municipalities and exchange ideas of improving each individual area.

MAS/MML Summer Conferences

Staff members from CMPDD attended the summer conferences of the Mississippi Association of Supervisors (MAS) and the Mississippi Municipal League (MML), both of which were held in Biloxi. In addition to speaking with many of the District's local members, CMPDD staff assisted MML with their conference registration desk as well as the MAPDD exhibit booth. During the MML Conference, CMPDD GIS & IT Manager Jonathan Simon presented "How Can GIS Help Your Community" to conference attendees.

CMPDD Receives Approval for Delta Regional Authority (DRA) SEDAP Application

DRA is a federal-state partnership created by Congress, which serves a 252 county/parish area in an eight-state region. In Mississippi, 45 counties (including all seven CMPDD counties) are eligible for funding under DRA. The purpose of DRA is to remedy severe and chronic economic distress by stimulating economic development partnerships that will have a positive impact on the region's economy. This year approximately \$1,635,177 will be available for the State of Mississippi.

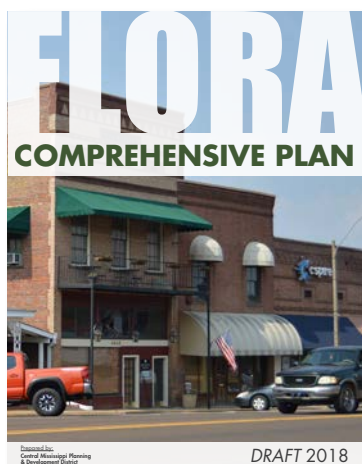
In Central Mississippi, the DRA State's Economic Development Assistance Program (SEDAP) is only open to public and non-profit entities in the DRA-designated counties. To find out if your project is located within the DRA designated area or for more information about DRA, please visit their website www.dra.gov.

Listed below is the application that was approved:

<u>Community Name</u>	<u>Project Description</u>	<u>DRA Funds</u>	<u>Matching Funds</u>
City of Vicksburg	Parking Area for public/private Innovation Center supporting workforce development, business entrepreneurship, higher education, State technology transfer and tourism for new job creation.	\$547,867.00	\$5,134,621.00

For additional information, please contact Mitzi Stubbs at 601-981-1511.

Town of Flora Unveils Comprehensive Plan and Zoning Ordinance Update



The Town of Flora's Comprehensive Plan, which was developed by CMPDD Planners, has been released for public input via the Town's website. The updated Plan is being released in Story Map, which is a web-based format that appears as a website with interactive graphics and maps. Web-based plans provide greater access to the document for current and prospective property owners and investors. The Plan update includes revisions to all four elements including the Goals and Objectives, Land Use Plan, Transportation Plan, and Community Facilities Plan. The

Comprehensive Plan update sets the foundation and vision for updates to the Town's Zoning Ordinance.

The Town's Zoning Ordinance, which was adopted in 2005 and amended in 2012, has been streamlined and simplified allowing it to become more user-friendly. The Ordinance also incorporates the community's vision for growth today and further encourages economic investments in the heart of Flora.

CMPDD's Medicaid Waiver Program Update

CMPDD's Elderly and Disabled (E&D) Home and Community Based Medicaid Waiver program provides Case Management (CM) and Home Delivered Meal (HDM) services to Medicaid eligible elderly and / or disabled recipients who desire to remain in their home setting. The Registered Nurse (RN) and Licensed Social Worker (LSW) team coordinates all approved

Waiver services and conducts monthly home visits to assure the services are meeting the clients' needs.

The Medicaid Waiver division employs 23 Full Case Management teams consisting of the RN and the LSW. Each team manages an average of 110 clients per caseload per month, coordinating Medicaid approved in-

home services, in efforts to prevent or delay nursing facility placement.

For more information on Elderly & Disabled Waiver CM services, please contact Teresa Shoto, RN, Case Management Director, at 601-855-5914 or tburrell@cmpdd.org.

CMPDD Submits Community Development Block Grant (CDBG) Public Facilities Applications For 2018

The CDBG Public Facility Program provides grant funds to local units of government for a variety of public improvement projects (e.g., water or sewer facilities, storm drainage, public buildings, street reconstruction, etc) that benefit low and moderate income families and areas. Special priority is given to water and sanitary sewer projects that eliminate existing health and safety hazards.

Over the past several months the District has been assisting local governments with the preparation of CDBG Public Facility Applications. The District submitted six (6) applications to the Mississippi Development Authority (MDA) for review. Listed below are the applications that were submitted:

<u>Community Name</u>	<u>Project Description</u>	<u>CDBG Funds</u>	<u>Matching Funds</u>
Town of Bentonina	Sewer System Improvements	\$450,000.00	\$72,102.00
Town of Braxton	Water System Improvements	\$450,000.00	\$350,000.00
Town of D'Lo	Sewer System Improvements	\$449,233.60	N/A
Village of Eden	Water Extensions and Imp.	\$380,859.00	N/A
Town of Mendenhall	Sewer System Improvements	\$449,965.00	N/A
Town of Wesson	Library ADA Improvements	\$314,489.00	N/A

Madison County Comprehensive Plan

The District is continuing its work to update the county's Comprehensive Plan. The existing land use survey has been completed. CMPDD recorded all land uses for every Madison county road and highway. An existing land use map is being developed from the survey map. The existing land use map will be used to develop a new future land use map, depicting how the land is anticipated to develop in the next 20 years.

In the meantime, District staff will update the county's demographic data and public facility information. This will involve inventorying all relevant demographic and public facilities data. This will be followed by the transportation and circulation chapter. Still to come is an online survey to gather



citizens' opinions.

The remaining tasks to be completed include the land use plan element, the transportation and major thoroughfares plan element, and a web-based plan via Story Map and enhancement of

web-based GIS mapping viewer. The final task will be to review the current Zoning Ordinance and make recommendations in light of the proposed Comprehensive Plan.

Hazard Mitigation Planning Update

Over the last few months, CMPDD has received Federal Emergency Management Agency (FEMA) approval Hazard Mitigation Plans for the Town of Terry and Mississippi Valley State University, which staffed developed. CMPDD is currently working with Mississippi State University on the development of their Hazard Mitigation Plan. *The Disaster Mitigation Act of 2000* requires local jurisdictions to maintain an approved Hazard Mitigation Plan in order to maintain grant eligibility for certain pre- and post-disaster grant programs available through the Mississippi Emergency Management Agency (MEMA) and the Federal Emergency Management Agency (FEMA). In addition, Plans are required to be reviewed and updated every five (5) years to account for any changes that might have occurred that could increase or decrease a communities risk to a particular hazard.



Predicting where the next disaster will occur, and how severe its impact will be on a community is difficult. Given the right conditions natural disasters, such as tornadoes and flash floods, can occur at anytime and anyplace. Their human and financial consequences can be significant. Mitigation planning is intended to assist communities in determining their risks to natural disasters and developing an action plan to address the known risks by lessening the impact of natural disasters when they do take place.

In the past few years, revised Mitigation Plans were developed and approved for Bentonina, Brandon, Byram, Clinton, Eden, Flora, Florence, Flowood, Georgetown, Hazlehurst, Jackson, Pearl, Richland, Ridgeland, Pelahatchie, Satartia, Terry, Vicksburg, Wesson, Yazoo City, Copiah County, Madison County, Rankin County, Warren County, and Yazoo County. CMPDD has also prepared a Mitigation Plan for Jackson State University and Mississippi Valley State University. For more information concerning the mitigation planning process underway or to find out how you can be involved in the process contact CMPDD Planning Staff, at 601-981-1511 or visit the District's mitigation website page <http://www.cmpdd.org/mitigation-planning/>.

Is Your Community Prepared?

CMPDD reminds you that your Hazard Mitigation Plan must be reviewed and updated every five (5) years to remain eligible for pre- and post-disaster grant programs; however, it is good practice to review your Plan every year. The next round of updates will begin in late 2019 and continue through 2022. CMPDD staff remains engaged with Mississippi Emergency Management Agency (MEMA) and will alert our members to grant and training opportunities, as well as changes in Hazard Mitigation requirements.

Caregiver Connection Family Caregiver Support Group

In April, the Central Mississippi Planning and Development District/Area Agency on Aging started their first Family Caregiver Support Group in partnership with the Mississippi Chapter of the Alzheimer's Association. The support group is designed to provide a welcoming non-judgmental atmosphere, for individuals who care for others to spend some time focusing on their own needs. The group also shares information on available services and support, as well as discussions on topics such as self-care and Medicare. The group meets once a month for one hour and is open to all care givers. Each meeting is informal and encourages open dialogue. To date, we have assisted seven (7) individuals through the caregiver support group in identifying various support services and/or releasing their fears and frustrations that relate to caring for

the needs of others. For more information, please contact Dr. Chelsea B. Crittle or Makleisha Logan-Hite at 601-981-1516.



New Workforce Services

As fiscal agent for the Southcentral MS Works Local Workforce Development Area, CMPDD is responsible for procuring entities to provide Workforce Innovation and Opportunity Act (WIOA) funded services and activities through the seventeen-county workforce area. CMPDD staff then work with those service providers to ensure that workforce employment and training activities are made available to job seekers and employers and to ensure that US Department of Labor performance requirements are met.

In accordance with the WIOA law, all WIOA funded services must be obtained through competitive procurement. CMPDD recently completed that procurement process and the area's Local Workforce Development Board and the Board of Commissioners have made some changes in service providers for the new WIOA Program Year which began on July 1.

Southcentral MS Works has been working closely with the community colleges in the workforce area to increase their involvement in the provision of employment and training activities in various ways. Hinds Community College and Copiah-Lincoln Community College both submitted proposals in response to the procurement process and were the successful proposers to serve as the One-Stop Operators of the Vicksburg and Natchez WIN Job Centers, respectively. Hinds CC was also the successful proposer to serve as the One-Stop Operator of the Sector Training Plus Comprehensive WIN Job Center that is being developed at the former Metrocenter Mall in Jackson. As One-Stop

Operator, the community colleges are responsible for the physical facility's operation as well as providing initial triage-type service to customers visiting the centers so that individuals' needs can readily be identified and they can quickly be referred to the appropriate staff person for assistance.

For the past WIOA Program Year, Hinds CC has served as the administrator of the Individual Training Account (ITA) program in the Jackson, Pearl, and Vicksburg WIN Job Centers. ITAs are scholarships awarded to eligible individuals to assist with the cost of tuition and other expenses of attending career tech type training at an approved training facility. For the new WIOA Program Year, Hinds CC will continue to administer the ITA program in those centers and they will also administer the workforce area's On-the-Job Training and Internship programs in the Jackson, Pearl and Vicksburg WIN Job Centers. On-the-Job Training provides assistance to employers who agree to hire and train eligible individuals and are reimbursed up to 50% of the wage paid to the trainee during the training period. The Internship program provides assistance to employers in the form of employment of eligible individuals at no cost to the employer for a period of time, after which, the goal is that the person will then be hired by the employer.

The workforce area's remaining WIN Job Centers located in Canton (Madison Co. Center), Brookhaven, McComb, Jackson, and Pearl will continue to be operated by the MS Department of Employment Security.

2018 MAPDD Conference

The Mississippi Association of Planning and Development Districts (MAPDD) held its annual conference in Biloxi, MS at the Beau Rivage Hotel April 24-27 and it was attended by over 600 individuals from across the state. Speakers included National Association of Development Organizations (NADO) Executive Director Joe McKinney, Mississippi Development Authority Executive Director Glenn McCullough, and Mississippi's Treasurer Lynn Fitch. Concurrent sessions were also offered during the conference with topics ranging from diversity in end of life care, new developments in digital mapping, and structuring successful economic development projects. Plans are already underway for next year's conference. Mark your calendars for April 23-26, 2019 at the Beau Rivage to participate in MAPDD's next conference.



CMDC BULLETIN

Ms. Wanda Cowart, President of the Central Mississippi Development Company, Inc. (CMDC), announced the approval of one (1) new loan.

This loan was for \$795,000 of a \$2,650,000 project under the United States Small Business Administration's 504 Loan Program. The proceeds of this loan will partially finance the purchase of an existing Shell branded convenience store in Brandon, Mississippi. This business will create three (3) new jobs in the private sector.

CMDC is a commercial lender certified by the U. S. Small Business Administration and works with local banks and other financial institutions in providing debt capital for small businesses. CMDC provides fixed rate low interest long term financing for small businesses and saves thousands of dollars in debt service on fixed assets. This type financing removes the problem of variable rate financing on long term assets. Many economic forecasters are certain that interest rates will rise. These predictable interest rate increases will not negatively impact the cash flow of those small businesses that have fixed rate low interest loans through the U. S. Small Business Administration's (SBA) 504 Loan Program. The most recent fixed interest rates under this loan program were:

SBA 504 Loan Program Interest Rates

<u>TERM (YEARS)</u>	<u>INTEREST RATE</u>
10 (April 2018)	5.29%
20 (June 2018)	5.32%



Also, CMDC serves as the Loan Review Board for the Central Mississippi Planning and Development District's (CMPDD's) Minority Business Enterprise Loan Program (MBELP). The MBELP receives its funding from the Mississippi Development Authority (MDA). The interest rate on loans made through this program to a minority owned business is currently 4.50% per annum. The term of a loan can be up to 15 years depending on the use of the loan proceeds (commercial buildings, equipment, inventory, working capital, etc.)

Ms. Cowart invites bankers, commercial loan officers, business owners, real estate developer, and general contractors, to contact Dwayne Perkins at 601-981-1625, or visit our website at www.cmpdd.org. See the tab labeled "Small Business Assistance."

City of Vicksburg Completes Community Block Grant (CDBG) Project

The City of Vicksburg has recently completed the rehabilitation and reconstruction of two wastewater clarifiers at the City's Treatment Plant. The City received a \$600,000 grant from the Mississippi Development Authority through the CDBG program to off-set the cost of the \$2 million project. The City contributed nearly \$1.9 million in matching funds. CMPDD provided grant application and administration services to the City.

In 2014, the City received notice from Mississippi Department of Environmental Quality that the equipment within the clarifiers at the City's only treatment plant appeared

to be worn and unable to perform at maximum levels. The Mississippi Department of Environmental Quality (MDEQ) stated concern of equipment failure, which would lead to major health and welfare concerns for residents and businesses in the City. Therefore, the City was notified that the swift rehabilitation and/or replacement of the equipment was necessary. During the rehabilitation project, one clarifier lifted from its foundation, which forced the City to reconstruct the structure, and delayed the project significantly. Although impacted by delays and unexpected costs, the City can now be confident

in its ability to protect the health and welfare of its citizens against raw sewage as a result of this project.

The CDBG Public Facility Program provides grant funds to local units of government for a variety of public improvement projects (e.g., water or sewer facilities, storm drainage, public buildings, street reconstruction, etc) that benefit low and moderate income families and areas. Special priority is given to water and sanitary sewer projects that eliminate existing health and safety hazards.

If the name and address of the recipient needs to be updated, please contact our office at 601-981-1511.

Help Me Grow Mississippi Pilot Project

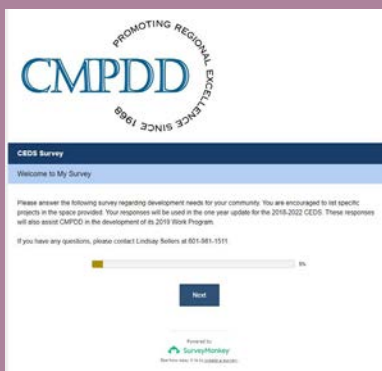
On July 1, 2018 the Jackson Mississippi Access to Care Center (JMACC) was selected by Mississippi Families for Kids and the Mississippi Department of Human Services Division of Aging & Adult Services as the pilot agency for the Help Me Grow Mississippi project. Funded in part by the W.K. Kellogg Foundation, Help Me Grow Mississippi is a system that connects at-risk children with needed services and support. The fundamental philosophy of this program is to build collaborations across various sectors, including child health care, early care, education, and family support. Families are linked with needed programs and services through physicians, community outreach, and information and referral centers. As the pilot agency, the Jackson Mississippi Access to Care Center will serve as the centralized telephone access point and will maintain a consolidated list of available statewide resources. JMACC Staff will assist with collecting quantifiable data that will be analyzed and used to develop a system which identifies the nature and volume of calls for the



target population. These efforts will all bridge gaps, identify barriers, and strengthen service and support. For more information, please contact Hattie Boone or Dr. Chelsea B. Crittle at 601-981-1516.

CEDS Survey

The District has sent a link out of its annual Comprehensive Economic Development Strategy (CEDS) survey to community leaders. We ask that if you receive a survey that you take time to complete and return it, as the responses will be compiled and used for the update of the 2018 – 2022 CEDS. Moreover, the responses will help guide CMPDD in the development of its 2019 Work Program. The CEDS Survey is available for virtual submission.
<https://www.surveymonkey.com/r/CEDS2018-2019>.



CMPDD BOARD OF DIRECTORS

Les Childress,
President

Isla Tullios,
Vice-President

William Banks,
Secretary-Treasurer

Cobie Collins,
Immediate Past President

Michael Monk,
Chief Executive Officer

Volume 33

Number 3