



Central Update

APRIL 2025

*A Quarterly Publication of
Central Mississippi Planning &
Development District*

Workforce Training That's Changing Lives

South Central MS Works and the Central Mississippi Planning and Development District (CMPDD) are proud to support the Relaunch. Reskill. Reconnect. initiative. This is a powerful workforce training program aimed at helping Mississippians gain valuable skills and re-enter the workforce with confidence.

One of the most exciting success stories so far is the launch of the Spring Heavy Civil Construction program at Holmes Community College Ridgeland Campus. This 8-week, hands-on training course is designed

to prepare participants for careers in the essential field of road and bridge building and infrastructure repair. This sector is vital to Mississippi's growth and economy.

Students in the program receive training in construction safety, equipment handling, blueprint reading, and other critical job skills, culminating in a graduation ceremony scheduled for April 25th. The goal is to provide participants with industry-recognized certifications and direct connections to job opportunities in the heavy civil construction field.

The program is powered by the Mississippi Reconnect grant and supported by a network of outstanding industry partners, including:

- Mississippi Department of Transportation (MDOT)
- Key Constructors, LLC
- APAC
- American Field Service Corporation
- J.C. Cheek
- Lehman-Roberts Co.
- ESI Supply
- Bracken Crane
- Puckett Rents
- Shackelford Companies LLC
- Build Mississippi
- Mendrop Engineering
- Mississippi Road Builders Association
- Mississippi Asphalt Association

These partners not only help shape the curriculum but also serve as potential employers, ensuring participants leave the program workforce ready.

"This program is a true example of what happens when workforce, education, and industry come together with a shared purpose," said Robin Parker, Workforce Director. "We're not just training people, we're helping them launch careers, support their families, and contribute to the future of Mississippi."

The Spring 2025 cohort includes a group of determined and motivated students, all recipients of the Mississippi Reconnect Grant, and all committed to building brighter futures through skilled trades.



The Spring cohort includes: (front row, left to right) Abdelaili Mokhless, Titus Beverly, Johnathan Hedgepeth, John McKenzie, instructor Cham Blain, (back row, left to right) Paris Sims, Antrell Burns, Brandon Parker, Jkeivyon Tucker, Joshua Haralson, Jaylon Horton, Kenneth Green, and Trevon Murriel.

Jackson MPO Adopts Updated Safety Targets

Federal guidelines require Metropolitan Planning Organizations (MPOs) State Departments of Transportation (DOTs) and transit service providers to develop and implement a performance-based transportation planning and programming approach that evaluates the effectiveness of transportation funding investments in maintaining and improving the operability of the overall transportation system. Performance based planning is a data-driven evaluation method used by transportation decision makers to determine the effectiveness of existing transportation investments and inform decisions on future investments in order to meet several federally required transportation performance targets set for multiple performance measure areas. The transportation performance measure areas that are required to be evaluated include: safety, pavement conditions, bridge conditions, travel time reliability, freight reliability, transit assets, and transit safety.

The safety performance measure is the only one that performance targets are required to be re-evaluated and updated annually per federal guidance. Under the safety performance area, MPOs and State DOTs are required to establish performance targets for five (5) safety performance measure areas based on a five-year rolling average of analyzed crash data. The five (5) safety performance measure areas targets are set for include: total fatalities, fatality rate, total serious injuries, serious injury rate, and total non-motorized fatalities and serious injuries. MPO's, per federal guidance, have the option to set their own safety performance targets or support targets set by their respective state DOT. On February 12th, 2025, the Jackson MPO voted to support the updated safety targets set by the Mississippi Department of Transportation (MDOT).

SAFETY TARGETS



2025 State of Mississippi Safety Targets

Measure	Target
Number of Fatalities	757
Rate of Fatalities per 100 million VMT	1.860
Number of Serious Injuries	3,217
Rate of Serious Injuries per 100 million VMT	7.920
Number of Non-Motorized Fatalities and Serious Injuries	271

State and MPO Safety Performance Trends

Fatalities	2019	2020	2021	2022	2023	5-yr Average
Mississippi	642	748	766	703	737	719.2
CMPDD MPO	73	104	77	80	82	83.2

Fatality Rate	2019	2020	2021	2022	2023	5-yr Average
Mississippi	1.560	1.890	1.880	1.760	1.808	1.780
CMPDD MPO	1.338	2.028	1.479	1.569	1.582	1.599

Serious Injuries	2019	2020	2021	2022	2023	5-yr Average
Mississippi	1,579	3,630	3,562	3,344	3,205	3,064
CMPDD MPO	307	659	696	631	652	589

Serious Injury Rate	2019	2020	2021	2022	2023	5-yr Average
Mississippi	3.840	9.180	8.630	8.370	7.863	7.577
CMPDD MPO	5.627	12.849	13.371	12.373	12.581	11.360

Non-Motorized Fatalities and Serious Injuries	2019	2020	2021	2022	2023	5-yr Average
Mississippi	187	325	287	325	285	281.8
CMPDD MPO	17	60	62	60	62	52.2

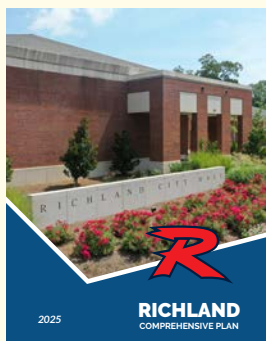
A **Measure** is a statement of what is being assessed, and a **Target** is a quantifiable level of performance or what you hope to achieve within an identified time period.



For more information about safety targets or the implementation of performance measures visit the MPO's website, www.cmpdd.org/performance/.

City of Richland Adopts New Comprehensive Plan in February 2025

In February 2025, the City of Richland adopted its updated Comprehensive Plan, a key document that will guide the city's growth, development, and land use decisions for the next several years. This new Plan replaces the 2018 version, reflecting the city's evolving needs, priorities, and community vision.



The Comprehensive Plan is a vital tool for local government officials, developers, and residents alike. It lays out the city's goals for future land use, zoning, infrastructure, and community services. With Richland experiencing continued growth, the updated Plan provides the necessary framework to support development while

preserving the community's character and quality of life.

One of the most significant updates in the new Comprehensive Plan is the revised Land Use Plan Map. This map plays a critical role in shaping zoning and development decisions, serving as a guide for where certain types of land uses, such as residential, commercial, and industrial areas, should be located. The updated map reflects both current needs and future projections, offering a balanced approach to managing the city's growth while considering factors like transportation, open space, and environmental impact.

For those interested in reviewing the full plan, the updated Comprehensive Plan and the Land Use Plan Map are available online. Residents and interested parties are encouraged to explore the document and stay informed on how these plans will influence future developments in the city.

CDBG Grant Updates

In the spring of 2025, four (4) municipalities and counties were awarded 2024 CDBG grants to assist with improving public infrastructure. Mississippi's CDBG Public Facilities Program provides municipalities and counties funding for public infrastructure needs. Eligible CDBG Public Facilities and Economic Development projects include improvements to water, wastewater and drainage systems, and streets.

- The Town of Georgetown was awarded \$599,992 for town-wide drainage improvements. This funding will stop recurring and severe flooding due to undersized culverts and sediment buildup.
- The City of Hazlehurst was awarded \$750,000 for sewer improvements. This funding will provide essential upgrades to two (2) aging wastewater treatment facilities: Bahala and Bayou Pierre Lagoons.
- The City of Brandon was awarded \$691,041 for sewer improvements to the Emerald Street community. This project will identify and restore existing sewer lines using trenchless technology methods such as cured-in-place-pipe (C.I.P.P.) lining and/or pipe bursting.
- The Town of Utica was awarded \$600,000 for critical improvements to the wastewater system. The project is replacing two (2) malfunctioning pumps at the primary pump station. This includes elevating manholes, upgrading covers, and implementing pipeline liners.

CMPDD staff continue to administer previously awarded projects with Warren County, Madison County, City of Byram, Town of Flora and the City of Raymond. CMPDD staff continues to work with municipalities on their new 2025 CDBG applications.

Hazard Mitigation Planning

The Disaster Mitigation Act of 2000 requires local jurisdictions to maintain an approved Hazard Mitigation Plan in order to maintain grant eligibility for certain pre- and post- disaster grant programs available through the Mississippi Emergency Management Agency (MEMA) and the Federal Emergency Management Agency (FEMA). Early spring severe thunderstorms have brought high winds, hail, frequent lightning, and tornadoes to Central Mississippi, which highlight the need for mitigation planning. All jurisdictions are reminded to review their adopted Hazard Mitigation Plans annually to ensure accuracy with current visions and needs and to account for any development or population changes that might have occurred that could increase or decrease a community's risk to a particular hazard.

Predicting where the next disaster will occur, and how severe its impact will be on a community is difficult. Given the right conditions, natural disasters, such as tornadoes and flash floods, can occur at anytime and anywhere. Their human and financial consequences can be significant. Mitigation Planning is intended to assist communities in determining their risks to natural disasters and developing an action plan to address the known risks by lessening the impact of natural disasters when they do take place. Currently, CMPDD Planners are assisting Mississippi Valley State University, Mississippi State University, and the University of Mississippi Medical Center with 5-year updates to their Hazard Mitigation Plans. CMPDD planners will be reaching out to governments that have a Hazard Mitigation Plan expiring soon and will remain available to assist local governments with their annual reviews.

City Clerks and Central MS Mayors Association

In March, both the City Clerks and the Central MS Mayors Association met at CMPDD. These groups meet quarterly to share best practices and discuss issues at the municipality level. The next City Clerk and CMMA meetings will be held during the summer. This spring, CMMA awarded two (2) scholarships to local students who will be continuing their education in the state of Mississippi. These students have achieved academic excellence and have shown deep commitment to serving their communities. This year's winners were Laken Curtis and Lanie Phillips, both of Brandon.



From left to right – Mayor Jake Windham of Pearl, Mayor Kenneth Broome of Utica, Mayor Clay Burns of Richland, Scholarship Recipient Laken Curtis, Mayor Todd Booth of Mendenhall, Mayor Michelle Douglas of Satartia, Mayor Russ Espiritu of Puckett, Scholarship Recipient Lanie Phillips, Mayor Chokwe Lumumba of Jackson, Mayor John Berry of D'Lo, Mayor Richard White of Byram, Mayor Michael Arinder of Braxton, Mayor Dale Berry of Magee, Mayor Butch Lee of Brandon.

District Staff Completes Safety Analysis Report



CMPDD staff recently completed development of the 2019-2023 Safety Analysis Report for the Jackson Metropolitan Planning Organization's (MPO's) planning area. Crash data analyzed by staff was obtained from the National Highway Traffic Safety Administration (NHTSA) and from data provided to the Mississippi Department of Transportation (MDOT) by the Mississippi Department of Public Safety (MDPS) covering a five-year planning period. The intent of the report is to provide a snapshot of the crash trends affecting users of the transportation system in the Jackson MPO's planning area. The report not only looks at crash

trends for the planning area but also includes a breakdown of the crash trends impacting each of the three counties included in the planning area.

Crash statistics contained in the report include total amount of crashes, total fatalities resulting from automobile crashes, total serious injuries resulting from a crash, total amount of non-motorized fatalities and serious injuries resulting from a crash, crash types, and crash time of day. The 2019-2023 Safety Analysis Report can be found on the CMPDD's website at www.cmpdd.org/safety-performance/.

DRA Program Updates and CMPDD Staff Attend DRA Training

DRA's investments help improve basic public infrastructure, transportation infrastructure, job training, workforce development and economic development planning to support further economic development in communities across Mississippi. CMPDD staff are currently working with local municipalities and organizations on their applications to be submitted for the 2025 grant cycle. DRA is now accepting applications for the following grant programs: States Economic Development Assistance Program (SEDAP), Critical Infrastructure Fund (CIF) and Strategic Planning. SEDAP awards are dedicated to improving public infrastructure in distressed and non-distressed communities with an emphasis on job creation. These projects can apply for a maximum of \$500,000. CIF provides public infrastructure assistance for distressed and non-distressed counties and municipalities in the DRA region. These projects can apply for a maximum \$2,000,000 grant amount. Strategic planning grants give public entities access to strategic planning funds to address long-standing issues and develop a roadmap for economic growth and opportunity. Applicants for this program have the autonomy to apply for a plan that fits the unique needs and challenges in their community. Eligible plans include, but are not limited to, economic development plans, utility rate studies, transportation plans, workforce development plans, and broadband deployment plans with a maximum grant award of \$150,000. CMPDD continues administering previously granted projects with the Town of Edwards, Town of Braxton, Mississippi Rural Water Association, Town of Georgetown, City of Raymond, and Magcor Industries. CMPDD is in the process of closing out projects for Piney Woods School and the Warren County Port Commission.

In February, CMPDD staff attended the DRA LDD Training in Memphis. During the training, DRA staff presented the latest updates to existing grant opportunities, new features of the online submission portal and best practices for application submittal. CMPDD was able to attend a post-training workshop that provided guidance for the best project-type avenues to effectively assist our region.

Planning Updates

Several communities across the region are making significant strides in updating their planning and zoning regulations to support future growth and development. Communities include the City of Crystal Springs, City of Madison, Simpson County, and Town of Benton.

DRA Distressed County Census Tract Analysis

In February 2025, CMPDD completed work for Delta Regional Authority (DRA) related to census tract analysis. This work was an extension of the county analysis that was completed in December of 2024. CMPDD provided information to DRA that identifies census tracts within non-distressed counties that could be distressed according to the indicators such as unemployment rate and per-capita income when compared to national averages. The information CMPDD produces gives DRA a way to evaluate geographies smaller than an entire county when there are pockets of distress within a non-distressed county.

CMPDD Awarded \$2.5M PROWD Grant to Support Reentry Workforce Development

CMPDD, serving as the administrative agent for South Central Mississippi Works (SCMW), has been awarded a \$2.5 million Pathway Home Reentry Workforce Development (PROWD) grant by the Mississippi Department of Employment Security (MDES). This funding will support innovative workforce reentry programs for incarcerated and justice-involved individuals within the SCMW 17-county service area.

The PROWD initiative is designed to help individuals transition from incarceration to employment by providing career coaching, skills training, job placement, and post-release support. The program will be implemented in phases, beginning with workforce readiness and credentialing services inside FCC Yazoo City,

followed by transitional support in Residential Reentry Centers, and continued case management once individuals return to their communities.

CMPDD will manage the grant in partnership with service providers and local employers, with a focus on aligning returning citizens with career pathways in high-demand industries.

“This grant gives us the opportunity to connect returning citizens with real opportunities for meaningful employment,” said Michael Curran, Senior Workforce Coordinator and PROWD Project Manager. “We’re building a reentry system that doesn’t just support second chances, it creates new beginnings.”

The PROWD program reflects SCMW’s commitment to removing



Partners for Reentry Opportunities
in Workforce Development

employment barriers, reducing recidivism, and strengthening the regional workforce.

For updates and information about future partnership opportunities, please contact Michael Curran at mcurran@cmpdd.org.

Pavement Management

The Pavement Management System is an inventory of the pavement conditions for the functionally classified, non-state maintained, principal arterial, minor arterial and collector roadways in the MPO Planning Area. Each year, on a three-year cyclical basis, CMPDD staff completes a reassessment of the roadway conditions for one (1) of the three (3) counties that makes up the MPO Planning Area which includes portions of Hinds, Madison, and Rankin Counties. For 2025, the CMPDD plans to assess pavements in Madison County.

In the past, data has been collected for the Pavement Management System by inventorying the roadways using windshield surveys. Windshield surveys are conducted by driving the entire length of a roadway and determining the level of deterioration that has occurred to the roadway’s surface.

Soon however, CMPDD will be partnering with the Mississippi Department of Transportation to conduct a pilot project to analyze pavements in MPO Planning Area. CMPDD will utilize MDOT’s automated pavement data collection vendor to collect and analyze pavement conditions on the network.

To conduct the pavement condition survey, a specially equipped van uses sensors and video to collect high-quality digital images of the pavement surface and measures the

number and extent of defects such as cracking and potholes. The van also records the extent of roughness and rutting along each road surface. This technology allows for a more objective evaluation of conditions and since the data is collected at speed, the survey process is safer than the traditional windshield survey method.

Once the data collection process is complete, the data is analyzed using CMPDD’s Deighton Total Infrastructure Management System (dTIMS) software program. Based on the input data dTIMS assigns a numeric value, or Pavement Condition Index (PCI) rating, to each road segment which indicates from highest to lowest which roadway segments in the JUA are in the poorest condition. The software also makes recommendations for roadway treatment based on the input data. These treatments can range from minor surface repairs to complete roadway reconstruction.

This information is used by local jurisdictions to assist them in making their pavement infrastructure investment decisions. This data is also used by CMPDD to evaluate resurfacing project applications when a Call for Projects is made that utilizes federal transportation dollars. If you have questions concerning the Pavement Management System, please contact Scott Burge at 601-321-2150.



CMPDD's Medicaid Waiver Program Update

The Elderly & Disabled Medicaid Waiver (E&D Waiver) is a statewide program designed to provide in-home assistance to qualified Medicaid beneficiaries. Beneficiaries must be 21 years of age or older. They must qualify by either SSI Medicaid or 300% of SSI Medicaid. They must require assistance with activities of daily living (ADLs) such as bathing, dressing, eating, ambulation and/or transferring; or instrumental activities of daily living (IADLs) such as laundry, light housekeeping, errands, and/or assistance on community outings. Registered Nurses (RN) and Licensed Social Workers (LSW) work together as a team to assess the referred client, submit for approval of services to the Division of Medicaid (DOM), then manage and coordinate the approved services for all clients.

If a beneficiary does not qualify for SSI Medicaid and is enrolled on any Waiver program, the monthly income limit for 2025 is \$2,901 (before deductions). The income limit is evaluated and adjusted accordingly each year.

On January 30-31, Case Managers participated in the two-day person-centered thinking training conducted by Courtney Williams, MSW, Program Director for the University of Southern Mississippi's Person-Centered Practices Institute. The training primarily focused on:

- Principles and skills to use to better support people that receive services and assistance.
- Recognizing and allowing things, actions, or people that are IMPORTANT TO and IMPORTANT FOR, and the balance between.
- Recognizing and avoiding "ableism" which is defined as beliefs, attitudes, actions, and situations that may de-value a person with a disability.
- Group activities that fostered ways to develop listening skills and use positive words while developing individualized plans of care.

March 2025 is National Social Workers Month! We appreciate the service and dedication of CMPDD's 20 amazing Social Workers!

CMPDD's Waiver and Workforce Investment divisions continue partnerships to employ Social Workers who have received their bachelor's degree in social work, and are seeking to work as a licensed social worker case manager. The salary-based 12-week program provides dedicated study time, information, preparation for taking the licensure exam, and supervised observation of case management home visits. Trainees also receive the traditional benefits of insurance coverage, leave time accrual, and other employee benefits. At the end of the 12-week training period, and passing the licensure exam, the trainee will automatically transition to a permanent LSW Case Manager position.

*Individuals who own an agency and are seeking to become a Medicaid Waiver service provider should contact the Division of Medicaid, Long-Term Care Bureau at 601-359-6141.

For more information on Elderly & Disabled Waiver services, please contact CMPDD's Mississippi Access to Care (MAC) Center at 1-844-822-4622. Or contact Teresa Burrell-Shoto, RN, Case Management Director at 601-855-5914 or tburrell@cmpdd.org.



Planners Collaborate with City of Brandon on Comprehensive Plan Update

The City of Brandon is moving forward with an update to its Comprehensive Plan, a vital document that will guide the city's growth and development over the coming years. In partnership with CMPDD, city planners have worked diligently to craft a plan that addresses the challenges and opportunities brought on by the City of Brandon's growth.



Over the past decade, Brandon has experienced growth and reinvestment across the city, leading to increased demand for infrastructure, transportation improvements, and new development opportunities. The updated Comprehensive Plan takes these factors into account, ensuring that future growth aligns with the city's long-term vision for sustainability, livability, and economic development.

The draft version of the updated Plan is now available for public review and comment on the City of Brandon's website. This marks an important step in the planning process, as the city continues to engage with residents, businesses, and other stakeholders to ensure the Plan

reflects the needs and desires of the community.

An online survey was conducted to gather input from a broader audience and two (2) public hearings have been held to provide an opportunity for residents to learn more about the Plan and share their feedback. A final public hearing is scheduled for April, where the community will have the chance to voice their opinions before the Plan is adopted.

One of the key areas addressed in the updated Plan is transportation. As Brandon continues to grow, improvements to the city's transportation network have become a top priority. The Plan emphasizes the need for better bicycle and pedestrian facilities, intersection improvements, and the construction of new roadways to accommodate the city's expanding population and increase mobility for residents.

In addition to transportation, the updated Comprehensive Plan also designates dedicated lands for residential and industrial development. These areas are strategically chosen to ensure that growth occurs in regions that are supported by adequate infrastructure, such as water, sewer, and roads. This careful planning will help create sustainable neighborhoods and business districts while minimizing potential strain on existing resources.

The anticipated adoption of the Comprehensive Plan is April 2025.

Mississippi Apprenticeship Accelerator: A New Opportunity for Employers to Build a Skilled Workforce

CMPDD is proud to partner with AccelerateMS, the Mississippi Apprenticeship Program (MAP) at the Mississippi Department of Employment Security to support the launch of the Mississippi Apprenticeship Accelerator (MAA), a bold new initiative designed to help businesses develop Registered Apprenticeship (RA) programs that meet their unique workforce needs.

Backed by a \$2 million investment, the MAA program will support the creation of RA programs across Mississippi, with a goal of placing approximately 600 new apprentices in high-demand, high-wage careers. These apprentices will receive a combination of paid, hands-on training and classroom instruction, ensuring they are equipped with the real-world skills employers need most.



The MAA program is open to businesses of all sizes, with a focus on Mississippi's priority sectors including:

- Advanced Manufacturing
- Construction
- Healthcare
- Information Technology

Whether companies are expanding, upskilling, or seeking to close talent gaps, Registered Apprenticeship is a proven model for building a pipeline of qualified workers.

Through this initiative, participating businesses will receive expert support from CMPDD and MAP to design, register, and implement their apprenticeship programs. Pre-apprenticeships are also encouraged, especially in partnership with local schools and community colleges, to create a steady stream of future talent.

If a company is interested in starting or expanding a Registered Apprenticeship program, please contact Jane Foreman at jforeman@cmpdd.org.

The Area Agency on Aging Celebrates National Nutrition Month

March was National Nutrition Month, and this year's theme was "Food Connects Us."

National Nutrition Month is an annual opportunity to focus on the significance of nutrition and health. It seeks to educate individuals about the importance of making informed food choices, developing healthy eating habits, and engaging in regular physical activity.

This year's theme, "Food Connects Us," celebrated the link between nutrition, health, and community, reinforcing how food and fellowship can bring people together.

During the month of March 2025, Aging staff delivered fresh fruits and vegetables to our recently opened Congregate meal sites (Nutrition sites) in Canton, Jackson, and Magee.

The seniors were excited to receive food options, empowering them to prepare and enjoy nutritious meals.

The Academy of Nutrition and Dietetics, stated "Food is more than just nutrition, it connects us". Making healthy food choices is essential to staying active and independent.

Food indeed plays a crucial role in our daily lives, by connecting us through shared meals and supporting our health. Balanced diet guidelines are essential for maintaining an active and independent lifestyle and preventing chronic diseases.

According to the Dietary Guidelines for Americans, 2020-2025, a balanced diet includes:

- Fruits and vegetables
- Whole grains
- Lean proteins
- Dairy or fortified soy alternatives
- Limited saturated fats, sodium, and added sugars.
- Healthy eating patterns can help prevent chronic diseases such as heart disease and Type 2 diabetes.

Special thanks to Bradford Farms for their partnership, ensuring our seniors receive healthy food options during National Nutrition Month. For more information on our Older Adults Nutrition Program, contact the Area Agency on Aging at 601-981-1516.



City of Magee Nutrition Site- Magee Mississippi



PUSH Ministries – Jackson, Mississippi

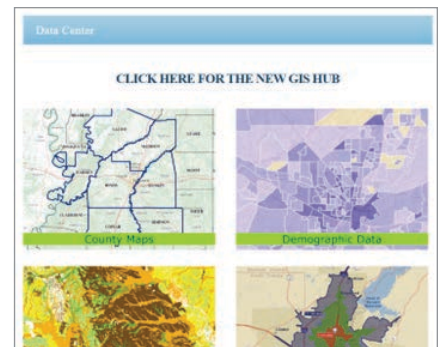


Johnnie's Place – Canton, Mississippi

CMPDD Data Resources

CMPDD would like to remind our local governments and residents that we make demographics profiles of counties and municipalities in our district available on our website. The information can be viewed online at www.cmpdd.org/data-center/ and can also be downloaded in PDF format and used as needed. The demographic

profiles show population, housing, and income snapshots of our counties, cities, and towns in the CMPDD district. All information is sourced from Census and ESRI and can be very helpful to local leaders and residents who are interested in demographics for their area. Please visit our website for more information.



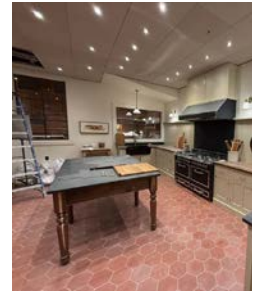
CMDC BULLETIN

Commissioner De'Keither Stamps, President of the Central Mississippi Development Company, Inc. (CMDC), is pleased to announce the continued construction of the Hobbs Automotive, Inc. and Cannery Row projects in Laurel, MS. Both projects utilized the SBA 504 loan program. The projects will create 45 new jobs in the private sector.

CMDC is a commercial lender certified by the U. S. Small Business Administration and works with local banks and other financial institutions in providing debt capital for small businesses. CMDC provides fixed rate low interest long term financing for small businesses and saves thousands of dollars in debt service on fixed assets. This type of financing removes the problem of variable rate financing on long-term assets. Many economic forecasters are certain that interest rates will rise. These predictable interest rate increases will not negatively impact the cash flow of those small businesses that have fixed rate low interest loans through the U. S. Small Business Administration's (SBA) 504 Loan Program. The most recent fixed interest rates under this loan program were:

SBA 504 Loan Program Interest Rates	
<u>TERM (YEARS)</u>	<u>INTEREST RATE</u>
10 (March 2025)	6.34%
20 (March 2025)	6.31%
25 (March 2025)	6.24%

Also, CMDC serves as the Loan Review Board for the Central Mississippi Planning and Development District's (CMPDD's) Minority Business Enterprise Loan Program (MBELP). MBELP receives its funding from the Mississippi



Cannery Row; Laurel, MS

Development Authority (MDA). The interest rate on loans made through this program to a minority owned business is currently 5.00% per annum. The term of a loan can be up to 15 years depending on the use of the loan proceeds (commercial buildings, equipment, inventory, working capital, etc.)

Commissioner De'Keither Stamps invites bankers, commercial loan officers, business owners, real estate developers, and general contractors to contact Dwayne Perkins at 601-981-1625, or visit our website at cmpdd.org. See the tab labeled "Small Business Loans."

MARK YOUR CALENDAR! PLANNING 101

*Join us for basic training related to
Comprehensive Plans and Zoning.*

Topics to be discussed:

- What are your duties related to planning
- What is a Comprehensive Plan & a Zoning Ordinance
- Common definitions and why are they important
- How to use these documents
- Legal and Ethical Scenarios

Where:

Central MS Planning and Development District Main Office
1020 Centre Pointe Blvd, Pearl, MS 39208

Who should attend:

- Planning/Zoning Commissioners
- Zoning Administrators and Staff
- Elected Officials

When:

Friday, October 10th, 2025
8:30-12:00

If the name and address of the recipient needs to be updated, please contact our office at 601-981-1511.

Mississippi Access to Care Center Expands Food Pantry and Community Outreach

The Mississippi Access to Care (MAC) Center continues to make a difference between Central and Southwest Mississippi by providing vital resources to individuals in need. With a fully staffed team dedicated to community service, the MAC Center is not only expanding its outreach but also encouraging residents to contribute to its growing food pantry.

The MAC Center food pantry has become an essential lifeline for many individuals and families facing food insecurity. Stocked with non-perishable goods, the pantry ensures that those in need have access to food. Community members are encouraged to support the initiative by making food or monetary donations, helping to sustain and grow this valuable program. Those who wish to contribute can drop off food

donations at the MAC Center located at 1170 Lakeland Drive, Jackson, MS 39216, during business hours, Monday through Friday from 8:00 AM-4:30 PM.

In addition to the food pantry, the MAC Center is actively engaging with the public at various events throughout Central and Southwest Mississippi. With a fully staffed team of seven Resource Specialists, the MAC Center can offer information, resources, and support to those seeking assistance with healthcare, disability services, and other essential needs.

For more information about the food pantry, donation opportunities, or upcoming community events, please contact the MAC Center at 1-844-822-4622.



CMPDD BOARD OF DIRECTORS

Sally Garland,
President

Les Childress,
Vice President

Dan Hart,
Secretary-Treasurer

William Banks,
Immediate Past President

Michael Monk,
Chief Executive Officer

Volume 40

Number 2