



MPO Public Engagement Evaluation Fiscal Year 2023

October 1, 2022 – September 30, 2023

Annually the Central MS Planning and Development District evaluates the Metropolitan Planning Organization's (MPO's) public engagement activities to determine if changes are needed to the MPO's public participation activities. Formerly called the Public Participation Plan (PPP) the PPP outlines a proactive public involvement process for the MPO's transportation planning initiatives. Public participation is not only an essential piece of guiding MPO decisions but is required to ensure the MPO meets federal guidelines. This evaluation provides an overview of the participation activities the MPO implemented over the past Fiscal Year (October 1, 2022 thru September 30, 2023).

YEAR AT A GLANCE



12 Committee Meetings



3 Stakeholder
Review Opportunities



2 Community Meetings



4 Newsletters
1 Annual Report
1 Mid Year Report

291 Meeting Attendees



45 Review Days



1 Community
Speaking Event



5 Social Media Post

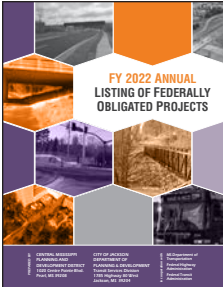


www.cmpdd.org
111,544 Page Views
38,581 Visitors



MPO Documents Published or Adopted

Each year the MPO produces a variety of plans, projects and studies. The resulting documents are made available to the public as reports and maps. Based on the type of document, feedback is solicited through a variety of formats including but not limited to community meetings, presentations to the MPO committees, mailouts, social media, or online engagement. Overall, there were 6 plans, reports, or studies produced in Fiscal Year 2023.



FY 2022 Obligated Projects Report

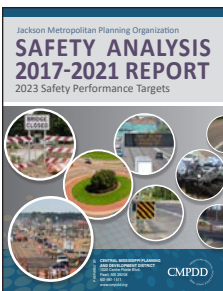
The annual listing of obligated transportation projects serves as a record for tracking projects receiving federal transportation funds.

Published December 2021

FY 2022 Annual Public Outreach Summary

Provides a synopsis of the MPO's outreach activities from October 1, 2021 thru September 30, 2022.

Published December 2022



2017-2021 Safety Analysis Report

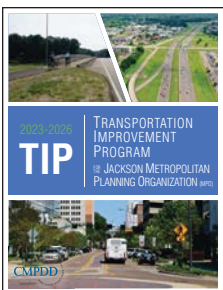
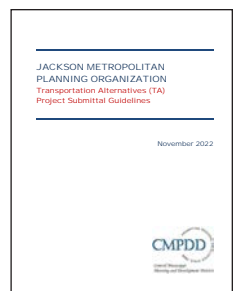
Produced annually as a way to track the progress being made to reduce crashes in the MPO planning area. The report primarily focuses on the number and types of crashes that have occurred and the resulting injuries or fatalities. The report also details the MPO's annual Safety Performance Targets.

Published June 2023

Transportation Alternatives Project Submittal Guideline

Provides information and reference material to assist local governments in completing applications for Transportation Alternatives grant funding through the MPO. The document outlines the parameters by which CMPDD personnel evaluate requests for funding during a call for projects.

Adopted November 2022



2023-2026 Transportation Improvement Program (TIP)

A short-term planning document providing an overview of how federal transportation dollars and local funds will be invested over a four-year period by federal, state, and local agencies

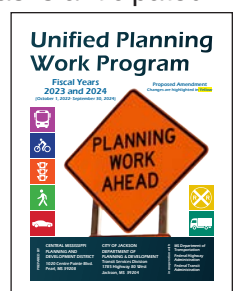
responsible for building, operating, and maintaining the multimodal regional transportation system. The 2023-2026 TIP was approved by the Federal Highway Administration in September 2022. Over Fiscal Year 2023, 11 amendments and 18 administrative modifications were made to the Transportation Improvement Program for 2023-2026.

Amended throughout 2023

2023-2024 Unified Planning Work Program

Describes all transportation planning activities to be performed by CMPDD and the designated public transit provider (JTRAN) during Fiscal Years 2023 and 2024. It includes a listing of major planning activities and tasks anticipated to be performed including details on who will complete the work, the schedule for completing the work, the resulting planning products, and a summary of the proposed funding sources.

Amended May 2023



Committee Meetings & Social Media

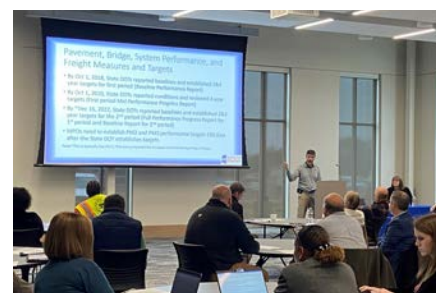


Central Mississippi Planning and Development District
May 11

CMPDD Announces Grant Funding for Six Metro-Area Transportation Alternative (TA) Projects

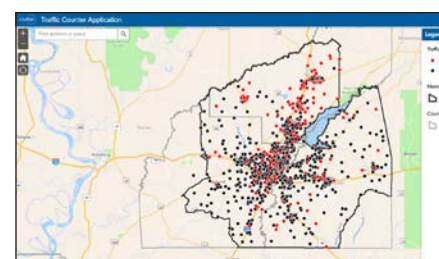
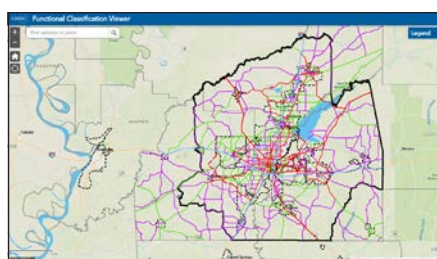
Transportation Alternatives (TA) funding awarded through the Metropolitan Planning Organization (MPO) is made available for projects which promote accessibility and mobility for non-drivers through the development of on- and off-road bicycle and pedestrian infrastructure. CMPDD is pleased to announce the MPO approved \$2.9 million in Transportation Alternative (TA) funding for six metro-...

Entity	Project	Federal TA Funding	Local Matching Funds
Brandon	Grants Ferry Pkwy. Multi-Use Path	\$1,144,563	\$798,188
Madison	Strawberry Patch Park Sidewalk	\$441,000	\$189,000
Pearl	Reverend Dr. Sidewalk	\$172,500	\$172,500
Pearl	Mary Ann Dr. Sidewalk	\$125,000	\$125,000
Pearl River Valley Water Supply District	Panem Landing Circle Multi-Use Path Extension	\$145,550	\$62,400
Ridgeland	Steed Rd. Connector Multi-Use Path	\$894,425	\$383,325



Interactive Maps

CMPDD continued to utilize interactive StoryMaps to help tell the story of different projects developed by the MPO during Fiscal Year 2023.



This document was prepared and published by the Jackson Metropolitan Planning Organization (MPO) and is prepared in cooperation with and financial assistance from the following public agencies: the Mississippi Department of Transportation (MDOT), the Federal Highway Administration (FHWA) and the Federal Transit Administration (FTA) under the Metropolitan Planning Program. The contents of this report do not necessarily reflect the official views or policy of the funding agencies. The Central Mississippi Planning and Development District (CMPDD) does not exclude, deny, or discriminate on the basis of race, color, national origin, ethnicity, immigration status, gender, sexual orientation, age, religion, creed, disability, or any other characteristic protected under applicable federal or state law in admission to, access to, or operation of its programs, services, or activities. CMPDD provides for equal employment opportunity to all its employees and applicants for employment. For all inquiries regarding the application of this accessibility statement and related policies please contact CMPDD's Human Resource Director: CMPDD 1020 Centre pointe Blvd. Pearl, MS 39208 (601)981-1511.