

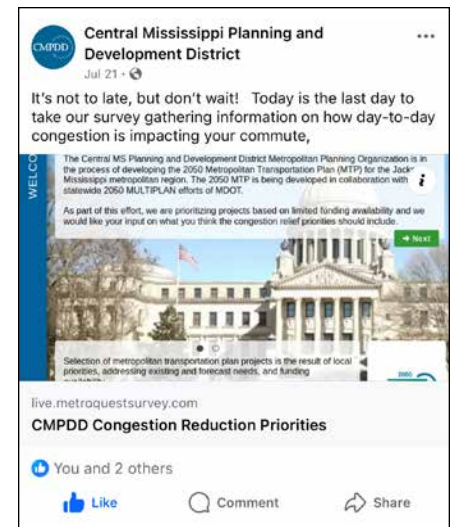


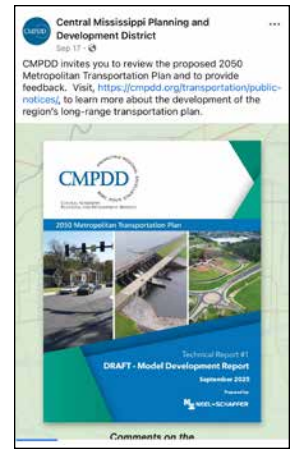
MPO Public Engagement Evaluation Fiscal Year 2025

October 1, 2024 – September 30, 2025

The Central Mississippi Planning and Development District (CMPDD) conducts a continuous, cooperative, and comprehensive transportation planning process and regularly seeks public input on its plans, projects, and work products. Each year, CMPDD evaluates the Metropolitan Planning Organization's (MPO's) public engagement activities to determine whether updates are needed to its public participation practices, which are guided by its Public Participation Plan. The Plan outlines the strategies and procedures the MPO uses to engage the public as well as other transportation stakeholders throughout the planning process. Public participation is both a key component in shaping MPO decisions and required to ensure compliance with federal guidelines.

This annual evaluation provides a summary of the MPO's public involvement activities conducted during the past fiscal year, covering the period from October 1, 2024, through September 30, 2025.





Funding Disclaimer

This document was prepared and published by the Central Mississippi Planning and Development District (CMPDD) Metropolitan Planning Organization (MPO) and is prepared in cooperation with and financial assistance from the following public agencies: the Mississippi Department of Transportation (MDOT), the Federal Highway Administration (FHWA) and the Federal Transit Administration (FTA) under the Metropolitan Planning Program. The contents of this report do not necessarily reflect the official views or policy of the funding agencies.

Accessibility Statement | Equal Employment Opportunity Employer

The Central Mississippi Planning and Development District (CMPDD) does not exclude, deny, or discriminate on the basis of race, color, national origin, ethnicity, immigration status, gender, sexual orientation, age, religion, creed, disability, or any other characteristic protected under applicable federal or state law in admission to, access to, or operation of its programs, services, or activities. CMPDD provides an equal employment opportunity to all its employees and applicants for employment. For all inquiries regarding the application of this accessibility statement and related policies please contact CMPDD's Human Resource Director: CMPDD 1020 Centre Pointe Blvd. Pearl, MS 39208. (601)981-1511.

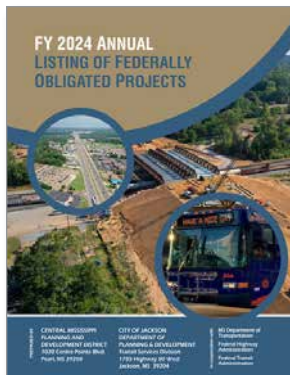
YEAR AT A GLANCE

During Fiscal Year 2025, CMPDD conducted extensive outreach activities to engage local residents in the region's transportation planning process. While much of the year's focus was on gathering input for the development of the 2050 Metropolitan Transportation Plan, a variety of tools and strategies were employed to provide both stakeholders and residents with meaningful opportunities to participate.



MPO Planning Documents

The MPO develops a range of plans, projects, and studies each year, with resulting documents provided to the public as reports and maps. Depending on the type of document, public input is gathered through various outreach methods, including community meetings, presentations to MPO committees, email blasts, social media, and online engagement. In Fiscal Year 2025, a total of 15 plans, reports, and studies were completed.

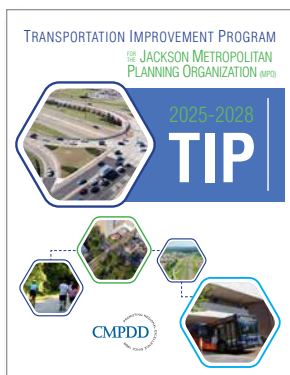


FY 2024 Obligated Projects Report

The annual listing of obligated transportation projects serves as a record for tracking projects receiving federal transportation funds.
Published December 2024

FY 2024 Annual Public Outreach Summary

Provides a synopsis of the MPO's outreach activities from October 1, 2023 through September 30, 2024.
Published December 2024



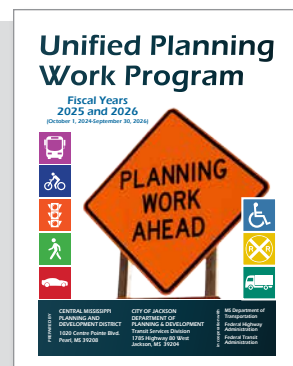
2025-2028 Transportation Improvement Program (TIP)

A short-term planning document providing an overview of how federal transportation dollars and local funds will be invested over a four-year period by federal, state, and local agencies responsible for building, operating, and maintaining the multimodal regional transportation system. Over Fiscal Year 2025, 7 amendments and 20 administrative modifications were made to the Transportation Improvement Program for Fiscal Years 2025-2028
Amended throughout Fiscal Year 2025

2025-2026 Unified Planning Work Program

Describes all transportation planning activities to be performed by CMPDD and the designated public transit provider, the City of Jackson-JTRAN, during Fiscal Years 2025 and 2026. It includes a listing of major planning activities and tasks anticipated to be performed including details on who will complete the work, the schedule for completing the work, the resulting planning products, and a summary of the proposed funding sources. FHWA approved two changes to the Unified Planning Work Program in Fiscal Year 2025 related to the scope of work to be performed by CMPDD.

Amended February 2025





2019 – 2023 Safety Analysis Report

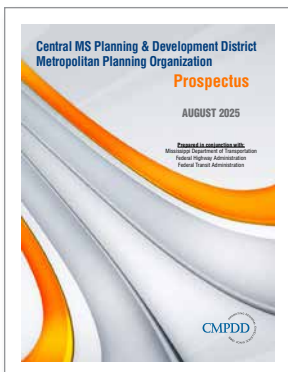
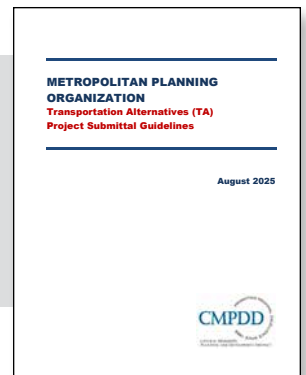
Produced annually as a way to track the progress being made to reduce crashes in the MPO planning area. The report primarily focuses on the number and types of crashes that have occurred and the resulting injuries or fatalities. The report also details the MPO's annual Safety Performance Targets.

Published February 2025

Transportation Alternatives Project Submittal Guideline

Provides information and reference material to assist local governments in completing applications for Transportation Alternatives Grant funding through the MPO. The document outlines the criteria CMPDD used to evaluate funding requests during a call for projects.

Amended August 2025



Prospectus

Bylaws document that outlines the MPO's organizational structure and responsibilities. The document also details the MPO's project management guidelines for projects awarded MPO grant funds.

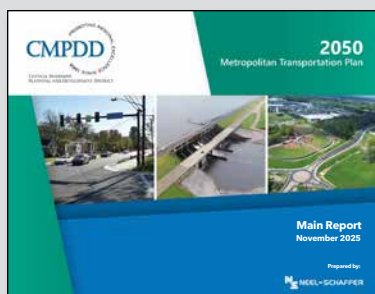
Amended August 2025

Proposed 2050 Metropolitan Transportation Plan

- Main Report
- Technical Report 1: Model Development
- Technical Report 2: State of Current Systems
- Technical Report 3: Transportation Performance Management
- Technical Report 4: Needs Assessment
- Technical Report 5: Plan Development
- Technical Report 6: Congestion Management Process
- Technical Report 7: Federal Compliance Checklist

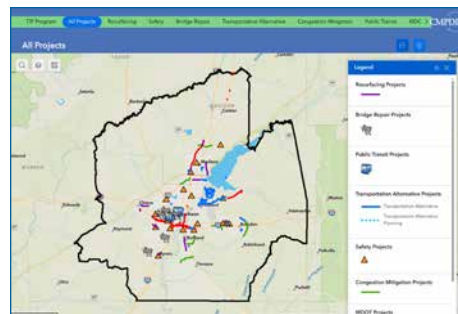
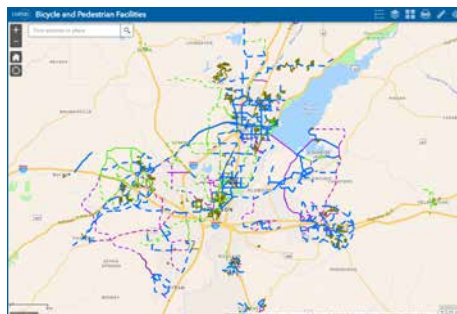
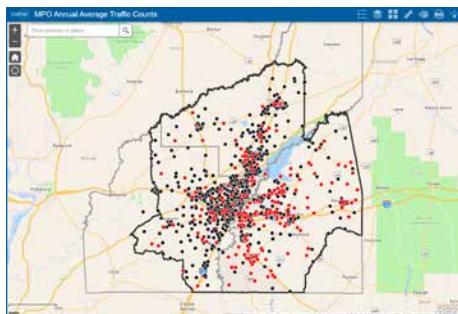
A long-range planning document that serves as a comprehensive blueprint for guiding transportation investments in the region over the next 25 years. The plan identifies transportation needs, policies, strategies, and projects designed to enhance mobility, safety, and overall quality of life for all residents.

Proposed Plan Released September 2025



Interactive Maps

CMPDD used interactive maps on its website to help illustrate the projects and programs developed by the MPO during Fiscal Year 2025. These resources are available at www.cmpdd.org.



Who Did We Reach Through Our Outreach Efforts

CMPDD collected demographic data through online surveys and during advertised in-person community meetings. More than 350 participants provided full or partial demographic information. Although participation is voluntary and not all participants supply every detail requested, the data still serves as a useful tool for developing a general understanding of who the MPO is reaching through its outreach efforts.

What is the Primary Method of Transportation of those the MPO Reached?

Private Automobile
97%



Shared Automobile
(Carpool) **0.9%**



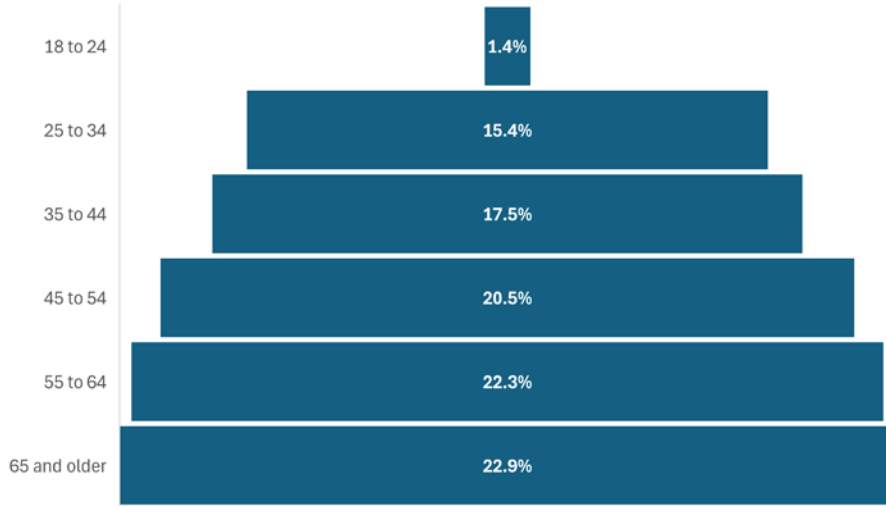
Public Transportation
0.9%



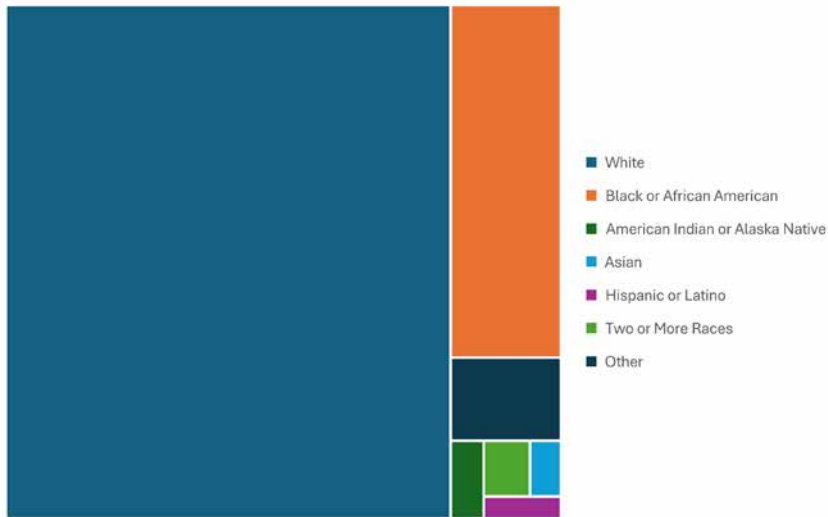
Bicycle
1.1%



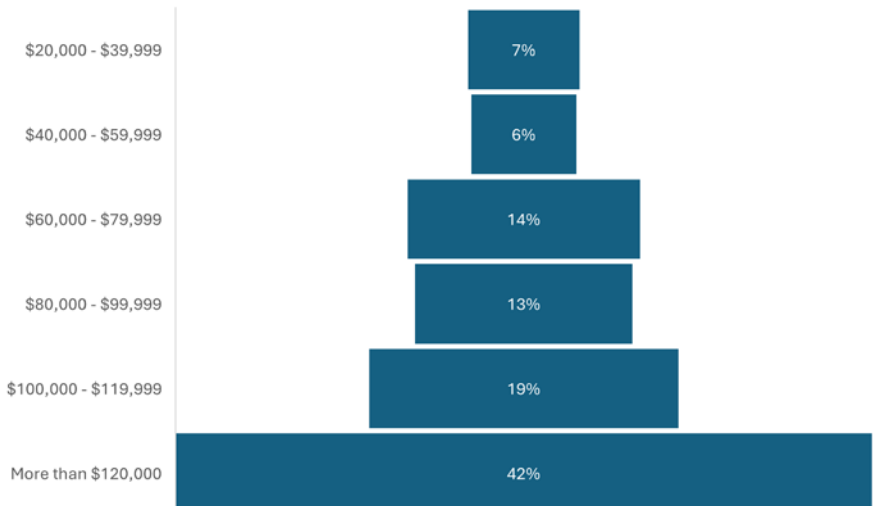
What is the Age Range of those the MPO Reached?



What is the Race/Ethnicity of those the MPO Reached?



What is the Annual Household Income of those the MPO Reached?





**Central Mississippi Planning
& Development District**

1020 Centre Pointe Boulevard
Pearl, MS 39208

Phone: 601-981-1511 Fax: 601-981-1515

www.cmpdd.org